



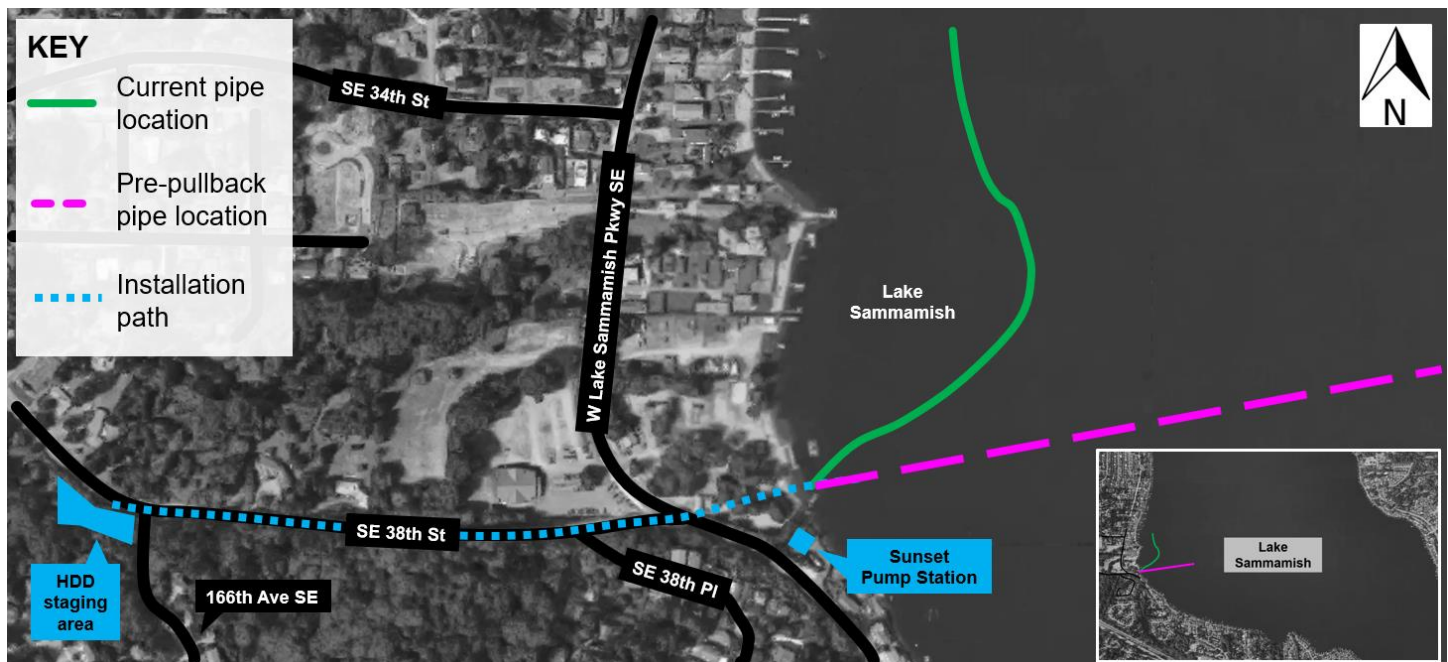
Sunset and Heathfield Pump Stations and Force Main Upgrade

Construction Update – Feb. 5, 2018

Heads up: 16-24 hours of upcoming nonstop work as crews pull pipe underground

As early as Tuesday, Feb. 6, crews will continue preparing for the final step in the Horizontal Directional Drilling (HDD) process, pipe pullback, by staging barges and additional boats on Lake Sammamish near the pipe. Pipe pullback is a process that installs the pipe by pulling it east to west through a pre-drilled underground pathway.

As early as the week of Feb. 12, crews plan to complete the pullback process. Two days prior to installation, crews will straighten the pipe, shown as a pink, dashed line in the map below. **As soon as a date is confirmed, we will follow up with an email and flier to near neighbors.** Continue reading for more details and other construction activities.



King County has worked to minimize pullback impacts by staging the pipe on Lake Sammamish and fusing all pieces together in advance. A few days before installation, crews will straighten out the pipe on the lake to prepare it for the pull.

Pullback must be done without stopping. **Crews will work round-the-clock for an estimated 16-24 hours**, including overnight hours. If unforeseen events require more than 24 hours of work, we will notify project neighbors via email.

What to expect **before** pullback:

- Weekday and weekend work at the HDD staging area and at Vasa Park/Sunset Pump Station through late February.
- Continued presence of drill rigs and other equipment near 164th Pl. S.E. and in Vasa Park
- The fused pipe to float on Lake Sammamish (for more information, see our [boater flier](#))

- Increased boat activity on Lake Sammamish as crews stage additional barges and boats on the lake as early as Feb. 6, and re-position the pipe on Lake Sammamish a few days before pullback (shown in pink, dashed line on map above)
- Truck traffic and traffic impacts on West Lake Sammamish Parkway Southeast and 164th Place Southeast during working hours
- Signs and flaggers to direct traffic around the work

What to expect **during** pullback:

- Additional equipment and crews near Vasa Park/Sunset Pump Station and the King County staging area on 164th Place Southeast
- Underwater anchors to remain in place through summer 2018, as removal during the summer will minimize impacts to salmon and other fish
- Increased noise and vibrations within approved limits as crews move materials in the staging areas
- Intermittent single-lane closures on Southeast 38th Street and West Lake Sammamish Parkway Southeast (near Vasa Park Resort and Sunset Pump Station) to unload equipment and materials
- A generator to run at the staging area on 164th Pl. S.E. to support dewatering. This removes underground water to allow for construction.
- Signs and flaggers to direct traffic around the work

After this nonstop pullback work, crews will continue to work on weekdays and weekends from 7 a.m. to 7 p.m. to grout and test the pipe. Crews will install the remaining sections of pipe through open cut and trenchless construction. We will continue to notify the community about future construction activities.

Other ongoing construction activities

Work hours: weekdays 7 a.m. to 7 p.m.

- **Sunset and Heathfield pump station work:** Crews continue electrical work at both the Sunset and Heathfield pump stations. Crews are also working to install ground support at the Sunset Pump Station.
- **Eastgate staging area:** Construction activities may include concrete pouring and curing at the Eastgate staging area (at the intersection of S.E. Eastgate Way and S.E. 37th St.). You can expect equipment, noise, and dust typical of a construction site while this work is completed.

The schedule and duration for construction is tentative and is subject to change as work progresses. We will continue to provide email notices with updates on timing of specific construction activities.

For more information

- Visit www.kingcounty.gov/sunsetheathfield
- Call the project hotline at **206-296-7800**
- Email De'Sean Quinn at desean.quinn@kingcounty.gov

**Alternative Formats Available
206-477-5371 TTY Relay: 711**