



King County

Department of Natural Resources and Parks
Wastewater Treatment Division

Sunset and Heathfield Pump Stations and Force Main Upgrade

Construction Update – Feb. 16, 2018

Pipe pullback scheduled to start as early as Wednesday, Feb. 21; 16-24 hours of nonstop weather-dependent work

As you have seen in previous emails, King County’s contractor has will soon begin the final step in the Horizontal Directional Drilling (HDD) process – pipe pullback, a process that installs the pipe by pulling it east to west through a pre-drilled underground pathway.

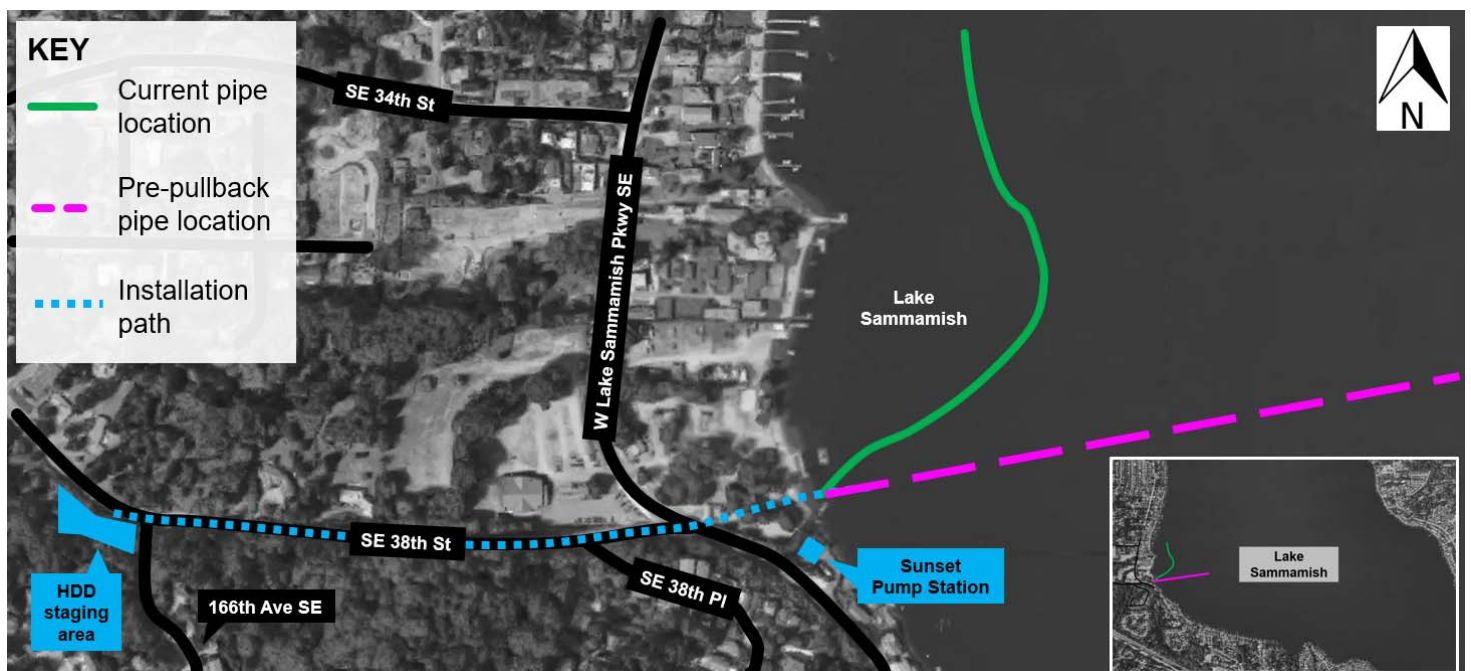
- Beginning as early as **this weekend**, crews will straighten out the pipe on the lake
- As early as **7 a.m. on Wednesday, Feb. 21**, crews plan to begin the pipe installation process

Crews must install the pipe without stopping and **will work round-the-clock for an estimated 16-24 hours, including overnight hours**. If unforeseen events require more than 24 hours of work, we will notify project neighbors via email.

The pullback schedule is weather-dependent and subject to change. We will send the most up-to-date information via email.

Please don’t hesitate to contact us during pullback.

- For urgent questions or concerns, call **206-296-7800**. Leave a message and you will receive a call back shortly.
- For general project questions, email De’Sean Quinn at desean.quinn@kingcounty.gov.



As a reminder, here's what to expect during pullback:

- Intermittent single-lane closures on Southeast 38th Street and West Lake Sammamish Parkway Southeast to unload equipment and materials. Signs and flaggers will direct traffic around the work.
- Additional equipment and crews near Vasa Park/Sunset Pump Station and the King County staging area on 164th Place Southeast
- Increased noise and vibrations within approved limits as crews work around-the-clock
- When it is dark, crews will use lights to ensure they can safely continue activities. As much as possible, crews will angle lights to minimize impact to neighbors.
- A generator to run at the staging area on 164th Pl. S.E. to support dewatering. This removes underground water to allow for construction.
- Underwater anchors to remain in place through summer 2018, as removal during the summer will minimize impacts to salmon and other fish

For more information about the HDD process, please visit the "Construction" section of the FAQs on [our website](#).

After this work is complete, crews will continue to work on weekdays and weekends from 7 a.m. to 7 p.m. to grout and test the pipe. Crews will then install the remaining sections of pipe through open cut and trenchless construction. We will continue to notify the community about future construction activities.

Other ongoing construction activities

Work hours: weekdays 7 a.m. to 7 p.m.

- **Sunset and Heathfield pump station work:** Crews continue to replace indoor pumps and will continue electrical work at both the Sunset and Heathfield pump stations. Crews are also working to install shoring at the Sunset Pump Station in preparation for connecting the new pipe.

The schedule and duration for construction is tentative and is subject to change as work progresses. We will continue to provide email notices with updates on timing of specific construction activities.

For more information

- Visit www.kingcounty.gov/sunsetheathfield
- Call the project hotline at **206-296-7800**
- Email De'Sean Quinn at desean.quinn@kingcounty.gov

**Alternative Formats Available
206-477-5371 TTY Relay: 711**