



King County

Department of Natural Resources and Parks
Wastewater Treatment Division

Sunset and Heathfield Pump Stations and Force Main Upgrade

Construction Update – Feb. 20, 2018

Pipe pullback rescheduled for as early as the week of Feb. 26; 16-24 hours of nonstop weather-dependent work

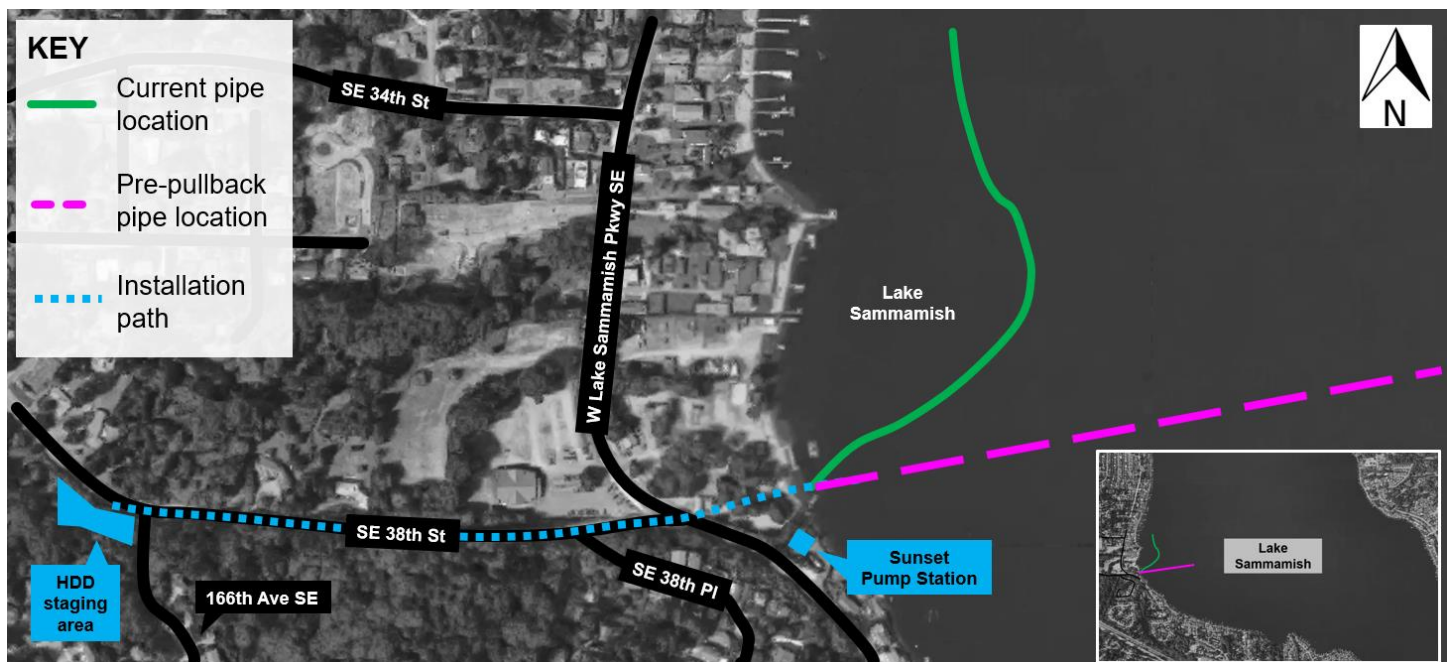
The schedule for pipe pullback has been postponed due to unexpected weather conditions. Crews now plan to straighten the pipe on Lake Sammamish and to begin the pipe installation process **as early as next week, the week of Feb. 26.**

The pullback schedule is weather-dependent and subject to change. We will continue to send the most up-to-date schedule information via email and will follow up as this work approaches.

As a reminder, crews must install the pipe without stopping and **will work round-the-clock for an estimated 16-24 hours, including overnight hours.** If unforeseen events require more than 24 hours of work, we will notify project neighbors via email.

Please don't hesitate to contact us:

- For urgent questions or concerns, call **206-296-7800**. Leave a message and you will receive a call back shortly.
- For general project questions, email De'Sean Quinn at **desean.quinn@kingcounty.gov**.



As a reminder, here's what to expect **during** pullback:

- Additional equipment and crews near Vasa Park/Sunset Pump Station and the King County staging area on 164th Place Southeast
- Increased noise and vibrations within approved limits as crews work around-the-clock
- When it is dark, crews will use lights to ensure they can safely continue activities. As much as possible, crews will angle lights to minimize impact to neighbors.
- Intermittent single-lane closures on Southeast 38th Street and West Lake Sammamish Parkway Southeast to unload equipment and materials. Signs and flaggers will direct traffic around the work.
- A generator to run at the staging area on 164th Pl. S.E. to support dewatering. This removes underground water to allow for construction.
- Underwater anchors to remain in place through summer 2018, as removal during the summer will minimize impacts to salmon and other fish

For more information about the HDD process, please visit the "Construction" section of the FAQs on [our website](#).

After this work is complete, crews will continue to work on weekdays and weekends from 7 a.m. to 7 p.m. to grout and test the pipe. Crews will then install the remaining sections of pipe through open cut and trenchless construction. We will continue to notify the community about future construction activities.

The schedule and duration for construction is tentative and is subject to change as work progresses. We will continue to provide email notices with updates on timing of specific construction activities.

For more information

- Visit www.kingcounty.gov/sunsetheathfield
- Call the project hotline at **206-296-7800**
- Email De'Sean Quinn at desean.quinn@kingcounty.gov

Alternative Formats Available
206-477-5371 TTY Relay: 711