

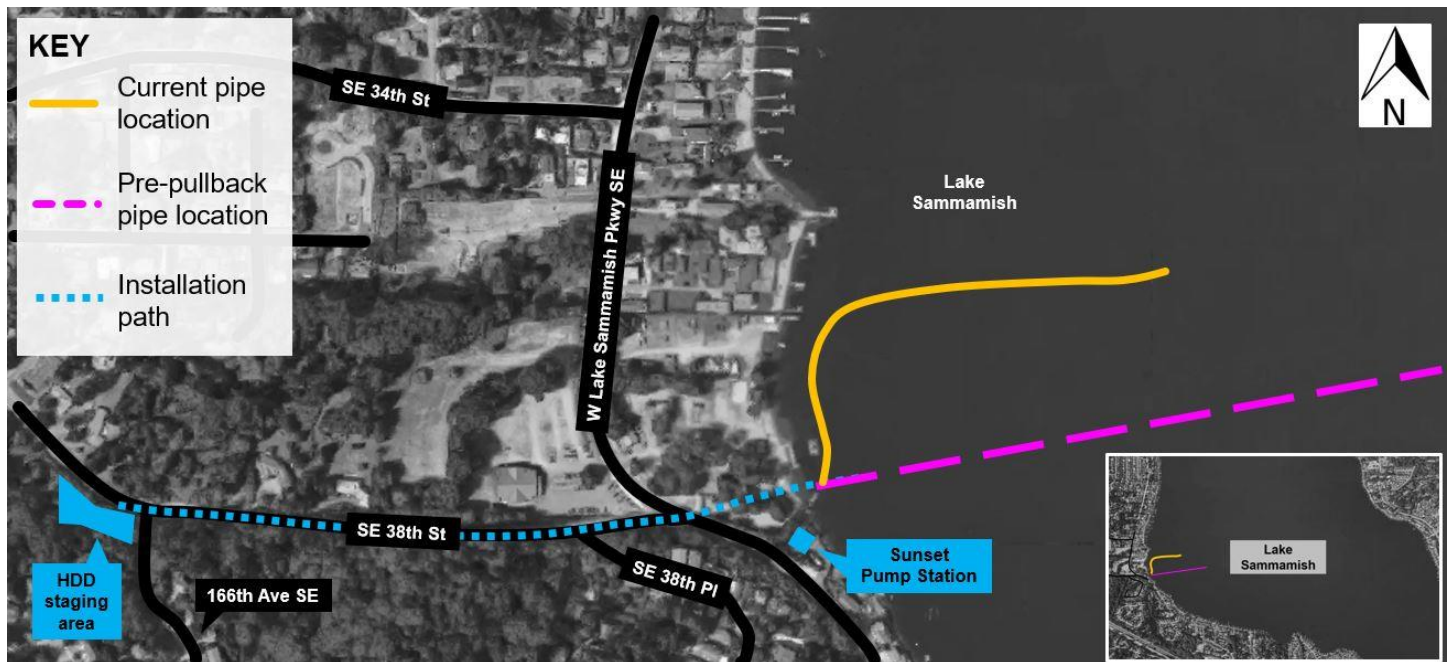


Sunset and Heathfield Pump Stations and Force Main Upgrade

Construction Update – March 14, 2018

Work underway to straighten floating pipe ahead of pullback. Pullback scheduled to begin on Friday, March 16

Crews began work on Monday to straighten the floating pipe on Lake Sammamish. The pipe needs to be straightened to line up with the installation path (see pink dotted line on map below) before the pullback can occur. During the pullback, the pipe will be pulled into place underground between Vasa Park and 164th Place S.E. Due to wind gusts during straightening activities earlier this week, the pipe has shifted in the water toward the shoreline near Vasa Park (yellow line on map below).



Current pipe position in Lake Sammamish.

The floating pipe is safely secured in its current position. Crews will continue to move the pipe when winds have lessened. The pullback is now scheduled for Friday, March 16, weather permitting. Once the pullback begins, work will occur round-the-clock for 16 - 24 hours.

We will send another update with any schedule changes.

Boaters are advised to avoid the water side area of Vasa Park and use extreme caution during all pipe straightening and pullback activities.

What to expect during pipe pullback:

- Nonstop work, day and night, for up to 24-hours to pull the pipe into place
- Intermittent single-lane closures on SE 38th Street and West Lake Sammamish Parkway S.E. to unload equipment and materials. Signs and flaggers will direct traffic around the work.
- Additional equipment and crews near Vasa Park/Sunset Pump Station and the King County staging area on 164th Place S.E.
- Increased noise and vibrations within approved limits as crews work around-the-clock
- When it is dark, crews will use lights to ensure they can safely continue activities. As much as possible, crews will angle lights away from neighbors.
- A generator to run at the staging area on 164th Place S.E. to support dewatering. This removes underground water to allow for construction.
- Underwater anchors will be detached from the pipe and remain in place on the lake bed through summer 2018

Upcoming construction activities

Crews will continue to work on weekdays and weekends from 7 a.m. to 7 p.m. to grout and test the pipe once underground installation is complete. Following this work, crews will connect the new pipe to the Sunset Pump Station using open cut construction near the Sunset Pump Station and the King County staging area on 164th Place S.E.

We will share more information with the community on timing and impacts of this work as it approaches.

Please don't hesitate to contact us:

- For urgent questions or concerns, call **206-296-7800**. Leave a message and you will receive a call back shortly.
- For general project questions, email De'Sean Quinn at desean.quinn@kingcounty.gov.
- For more information about the HDD process, please visit the "Construction" section of the FAQs on [our website](#).

UpdThe schedule and duration for construction is tentative and is subject to change as work progresses. We will continue to provide email notices with updates on timing of specific construction activities.

For more information

- Visit www.kingcounty.gov/sunsetheathfield
- Call the project hotline at **206-296-7800**
- Email De'Sean Quinn at desean.quinn@kingcounty.gov

Alternative Formats Available
206-477-5371 TTY Relay: 711