



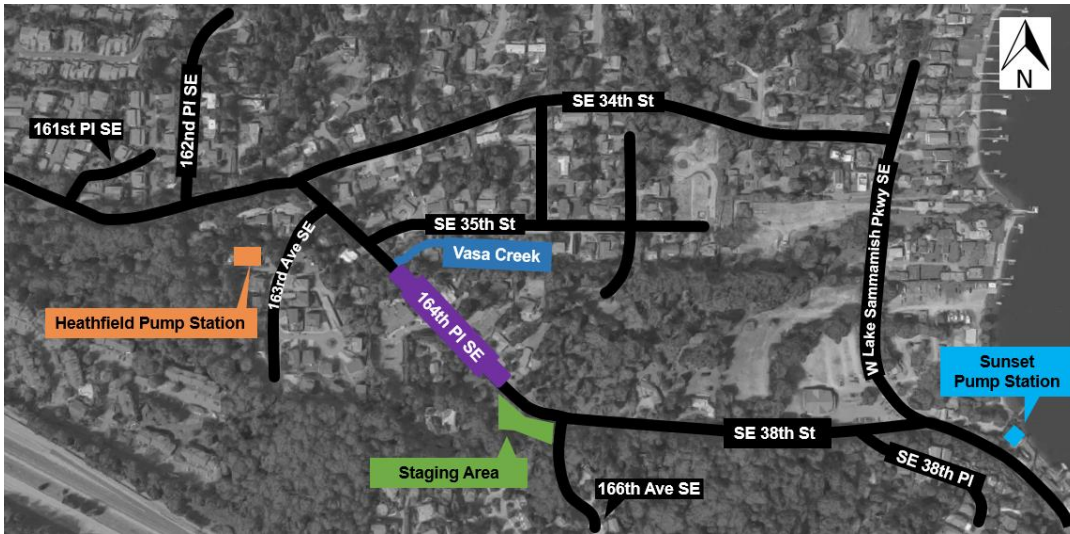
**King County**

Department of Natural Resources and Parks  
Wastewater Treatment Division

# Sunset and Heathfield Pump Stations and Force Main Upgrade

## Construction Update – April 16, 2018

***Crews prepare for open cut construction on 164th Place Southeast; expect lane closures and delays as early as April 23***



### Upcoming work: open cut pipe installation on 164th Place Southeast

**Work hours:** weekdays 7 a.m. to 7 p.m.; weekends 7 a.m. to 7 p.m., if necessary

This phase of open cut construction is expected to begin as early as the week of April 23 and continue for approximately three to four weeks. This work will require **single-lane closures in the work area on 164th Place Southeast during work hours. Crews will re-open lanes to traffic overnight.**

Please note that [future open cut and trenchless construction](#) will occur along 164th Place Southeast through the end of 2018. As future phases of work are scheduled, we will follow-up with additional information of what you can expect.

You can expect:

- Temporary driveway access restrictions. If your driveway is impacted, we will work with you prior to construction. You can also learn more in the box on the right.
- Traffic delays of up to 20 minutes during work hours. Flaggers will be present to direct traffic.
- Temporary roadway patches on top of the trench outside of work hours.
- Increased noise from concrete cutting, excavation and pipe installation
- Access maintained for services including emergency, waste pickup, school buses, and mail delivery

### **Driveway impacts**

Due to open cut construction, residents on 164th Place Southeast may experience temporary restrictions to driveway access during work hours. These restrictions will occur while crews install a pipe near your home or near your access point to 164th Place Southeast (likely between 2 – 4 days). **If you need to use your driveway when crews are working in front of your home, please let a crew member know. They will add a steel plate over the trench to provide access. Please know, it may take crews up to 15 minutes to plate over the trench.**

If you experience any difficulties, please call our project hotline **206-296-7800**, leave a message and a team member will return your call shortly.

## **Other Construction Activities**

### **Heathfield Pump Station**

**Work hours:** weekdays 7 a.m. to 7 p.m.

You can expect increased activity at the pump station during typical construction hours while crews continue electrical work.

### **King County staging area on 164th Place Southeast and Southeast 38th Street**

**Work hours:** weekdays and weekends 7 a.m. to 7 p.m.

Crews are wrapping up final testing and grouting of the pipe from the King County staging area. Crews will continue to use half of the staging area through fall 2019 for future construction activities. The other half will be cleaned up and will no longer be used starting in May 2018.

### **Sunset Pump Station**

**Work hours:** weekdays and weekends 7 a.m. to 7 p.m.

- Crews continue to grout and test the pipe pulled underneath Southeast 38th Street from Vasa Park to 164th Place Southeast.
- Last week, crews removed the existing pump station roof. A new green roof will be installed in its place. Green roofs improve stormwater management by reducing runoff, improve water quality and conserve energy, among many other benefits.
- You can expect increased activity at the pump station during typical construction hours while the crews continue upgrades to the pump station.

### **What to expect throughout construction:**

- Truck traffic and traffic impacts on West Lake Sammamish Parkway Southeast and 164th Place Southeast during working hours
- Intermittent single-lane closures on West Lake Sammamish Parkway Southeast near the Vasa Park Resort and the Sunset Pump Station for delivery of equipment
- Signs and flaggers to direct traffic around work or to detour routes
- Equipment, dust, vibration and increased noise during work hours

*The schedule and duration for construction is tentative and is subject to change as work progresses. We will continue to provide email notices with updates on timing of specific construction activities.*

#### **For more information**

- Visit [www.kingcounty.gov/sunsetheathfield](http://www.kingcounty.gov/sunsetheathfield)
- For more information about the project schedule, please visit the “Construction” section of the FAQs on our website
- Call the project hotline at **206-296-7800**
- Email De'Sean Quinn at [desean.quinn@kingcounty.gov](mailto:desean.quinn@kingcounty.gov)

**Alternative Formats Available  
206-477-5371 TTY Relay: 711**