

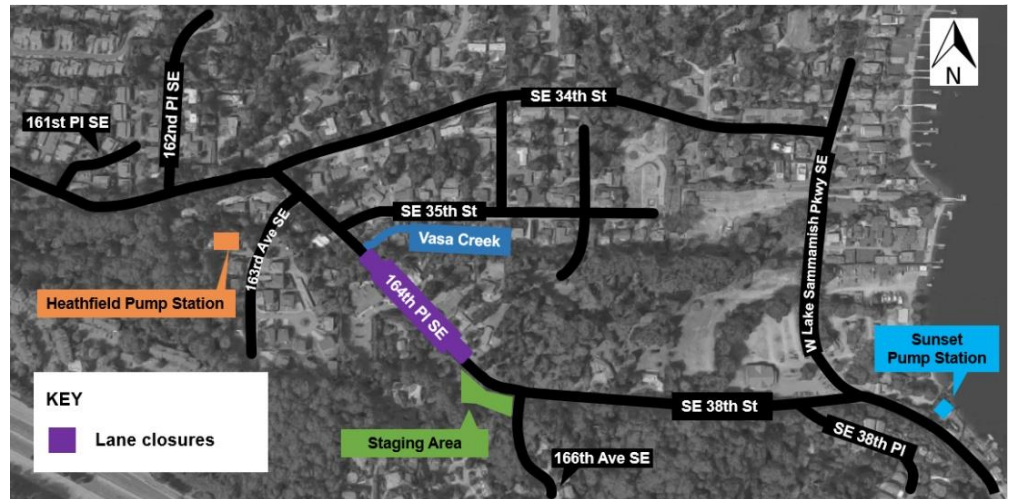


Sunset and Heathfield Pump Stations and Force Main Upgrade

Construction Update – April 27, 2018

Update: Open cut construction on 164th Place Southeast now scheduled for early to mid-May

Crews continue work at Vasa Park and the Sunset and Heathfield pump stations. Before starting open cut on 164th Place Southeast, crews will remove equipment used for completed horizontal directional drilling (HDD) at the project staging area near 164th Place Southeast and complete open cut pipe installation next to the Sunset Pump Station.



Upcoming work: open cut pipe installation on 164th Place Southeast

Open cut construction on 164th Place Southeast is now scheduled to begin in early to mid-May and continue for approximately three to four weeks. This work will require **single-lane closures on 164th Place Southeast during the day. Crews will re-open lanes to traffic overnight.**

Crews will need to complete [additional open cut and trenchless construction](#) along the western section of 164th Place Southeast in the future. As this additional work gets scheduled, we will provide additional information of what you can expect.

Driveway impacts on 164th Place Southeast

Due to open cut construction, residents on 164th Place Southeast may experience temporary restrictions to driveway access during work hours. These restrictions will occur while crews install a pipe near your home or near your access point to 164th Place Southeast (likely between 2 and 4 days). **If you need to use your driveway when crews are working in front of your home, please let a crew member know. They will add a steel plate over the trench to provide access. Please know, it may take crews up to 15 minutes to plate over the trench.**

If you experience any difficulties, please call our project hotline **206-296-7800**, leave a message and a team member will return your call shortly.

A reminder of what to expect during the open cut phase:

- **Work hours:** weekdays 7 a.m. to 7 p.m.; weekends 7 a.m. to 7 p.m., if necessary
- Temporary driveway access restrictions. If your driveway is impacted, we will work with you prior to construction. You can also learn more in the “driveway impacts” section above.
- Traffic delays of up to 20 minutes during work hours. Flaggers will be present to direct traffic
- Temporary roadway patches to cover the trench outside of work hours

- Increased noise from concrete cutting, excavation, and pipe installation
- Access maintained for services including emergency, waste pickup, school buses, and mail delivery

What to expect throughout construction:

- Truck traffic and traffic impacts on West Lake Sammamish Parkway Southeast and 164th Place Southeast during working hours
- Intermittent single-lane closures on West Lake Sammamish Parkway Southeast near the Vasa Park Resort and the Sunset Pump Station for delivery of equipment
- Signs and flaggers to direct traffic around work or to detour routes
- Equipment, dust, vibration, and increased noise during work hours

The schedule and duration for construction is tentative and is subject to change as work progresses. We will continue to provide email notices with updates on timing of specific construction activities.

For more information

- Visit www.kingcounty.gov/sunsetheathfield
- For more information about the project schedule, please visit the “Construction” section of the FAQs on our website
- Call the project hotline at **206-296-7800**
- Email De’Sean Quinn at desean.quinn@kingcounty.gov

**Alternative Formats Available
206-477-5371 TTY Relay: 711**