



**King County**

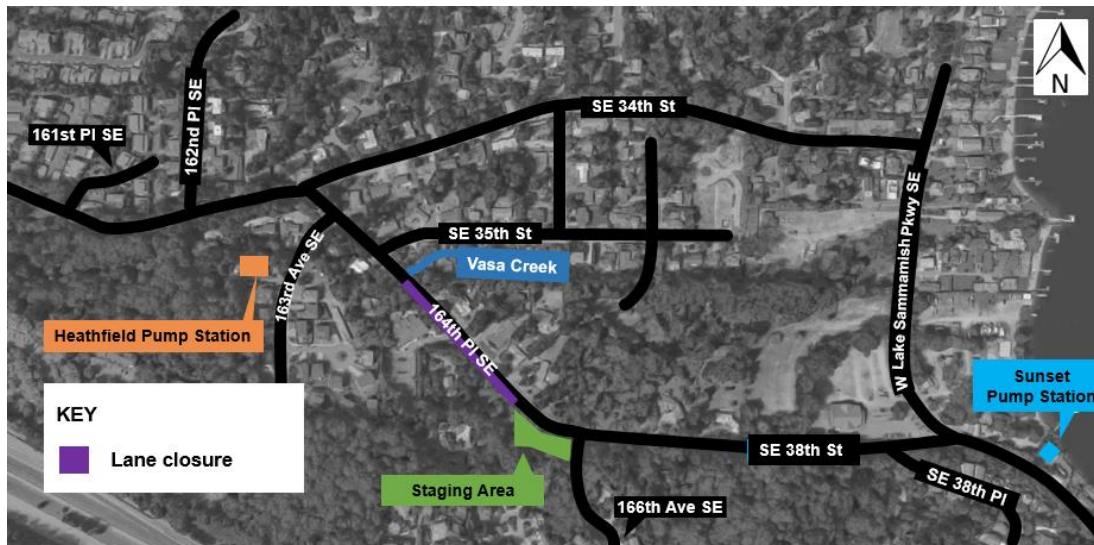
Department of Natural Resources and Parks  
Wastewater Treatment Division

# Sunset and Heathfield Pump Stations and Force Main Upgrade

## Construction Update – May 10, 2018

**Schedule update: Open cut construction on 164th Place Southeast scheduled to begin as early as Monday, May 14**

Crews recently completed a section of open cut pipe installation near the Sunset Pump Station and are beginning to install pipe via open cut construction at the King County Staging area today, Thursday, May 10. Open cut construction on 164th Place Southeast, between Vasa Creek and the King County staging area, is expected to begin as early as Monday, May 14 and last for approximately three to four weeks.



During this work, you can expect:

- **Work hours:** weekdays 7 a.m. to 7 p.m.; weekends 7 a.m. to 7 p.m., if necessary
- **Lane closures:** Single-lane closures on 164th Place Southeast during work hours beginning as early as Monday, May 14.
  - Flaggers will be present to direct traffic through the closure.
  - Drivers can expect traffic delays of up to 20 minutes during work hours.
  - Both lanes of traffic will be open outside of work hours.
- **Driveway impacts:** Select driveways will be temporarily blocked during this work beginning as early as Wednesday, May 16. King County is working directly with neighbors whose driveways will be impacted.
- **Temporary roadway patches:** Crews plan to place roadway patches to cover the trench and temporarily restore access to the road at the end of work hours each day
- **Increased noise:** Neighbors can expect noise from concrete cutting, excavation, vector trucks, pipe installation, and generators at the King County staging area that will continue powering dewatering equipment until excavation is complete
- **Access maintained for services:** Access will be maintained for emergency, waste pickup, school buses, and mail delivery

As a reminder, crews will need to complete [additional open cut and trenchless construction](#) along the western section of 164th Place Southeast in the future. As this additional work is scheduled, we will provide information of what you can expect.

## **Additional Construction Activities**

### ***Heathfield and Sunset Pump Stations***

Crews continue to make progress to upgrade both pump stations. Over the next few weeks, you can expect:

- **Work hours:** weekdays 7 a.m. to 7 p.m.
- Increased noise and activity at both stations. Generators are currently operating the temporary power for both stations and will be in use until electrical upgrades are complete.

### ***Vasa Park***

Crews completed restoration activities at Vasa Park this week.

### **What to expect throughout construction:**

- Truck traffic and traffic impacts on West Lake Sammamish Parkway Southeast and 164th Place Southeast during working hours
- Intermittent single-lane closures on West Lake Sammamish Parkway Southeast near the Vasa Park Resort and the Sunset Pump Station for delivery of equipment
- Signs and flaggers to direct traffic around work or to detour routes
- Equipment, dust, vibration, and increased noise during work hours

*The schedule and duration for construction is tentative and is subject to change as work progresses. We will continue to provide email notices with updates on timing of specific construction activities.*

#### **For more information**

- Visit [www.kingcounty.gov/sunsetheathfield](http://www.kingcounty.gov/sunsetheathfield)
- For more information about the project schedule, please visit the “Construction” section of the FAQs on our website
- Call the project hotline at **206-296-7800**
- Email De’Sean Quinn at [desean.quinn@kingcounty.gov](mailto:desean.quinn@kingcounty.gov)

**Alternative Formats Available  
206-477-5371 TTY Relay: 711**