



King County

Department of Natural Resources and Parks
Wastewater Treatment Division

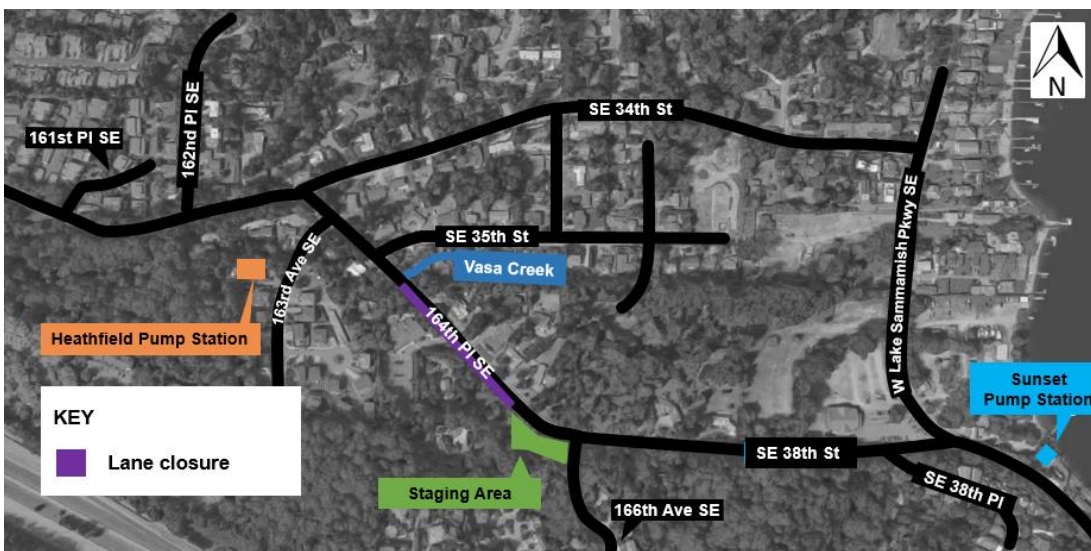
Sunset and Heathfield Pump Stations and Force Main Upgrade

Construction Update – May 18, 2018

Crews continue open cut construction on 164th Place Southeast; weekend work not expected for the next three to four weeks

Crews completed open cut installation at the King County Staging Area last week and began open cut construction along 164th as planned, on Wednesday, May 16. This work is currently expected to last for the next three weeks.

To ensure this work stays on schedule, crews plan to begin at 7 a.m. each weekday morning. You may see crews begin to gather onsite at 6:30 a.m., but they do not plan to begin using construction equipment until 7 a.m. **At this time, crews do not plan to work on Memorial Day or during the weekend for the next three to four weeks.**



A reminder of what to expect:

- **Work hours:** weekdays 6:30 a.m. to 7 p.m.
- **Lane closures:** Single-lane closures on 164th Place Southeast during work hours.
 - Flaggers will be present to direct traffic through the closure.
 - Drivers can expect traffic delays of up to 20 minutes during work hours.
 - Both lanes of traffic will be open outside of work hours.
- **Driveway impacts:** Select driveways will be temporarily blocked during open cut work. King County is working directly with neighbors whose driveways will be impacted.
- **Mailbox impacts:** Select mailboxes on 164th will need to be temporarily relocated to accommodate open cut construction. Crews may need to move mailboxes approximately 100 feet from their original location. Once work progresses past the mailboxes' initial position, crews will return them to their original location. The contractor has coordinated with mail delivery services and residents should not have issues receiving mail during periods of temporary mailbox relocation. King County is working directly with affected residents.

- **Temporary roadway patches:** Crews plan to place roadway patches to cover the trench and temporarily restore access to the road at the end of work hours each day
- **Increased noise:** Neighbors can expect noise from concrete cutting, excavation, vector trucks, pipe installation, and generators at the King County staging area that will continue powering dewatering equipment until excavation is complete
- **Access maintained for services:** Access will be maintained for emergency, waste pickup, school buses, and mail delivery

As a reminder, crews will need to complete [additional open cut and trenchless construction](#) along the western section of 164th Place Southeast in the future. As this work is scheduled, we will provide additional information of what you can expect.

Additional Construction Activities

Heathfield and Sunset Pump Stations

Crews continue to make progress to upgrade both pump stations. Over the next few weeks, you can expect:

- **Work hours:** weekdays 7 a.m. to 7 p.m.
- Increased noise and activity at both stations. Generators are currently operating the temporary power for both stations and will be in use until electrical upgrades are complete.

Vasa Park

Crews completed restoration activities at Vasa Park last week.

What to expect throughout construction:

- Truck traffic and traffic impacts on West Lake Sammamish Parkway Southeast and 164th Place Southeast during working hours
- Intermittent single-lane closures on West Lake Sammamish Parkway Southeast near the Vasa Park Resort and the Sunset Pump Station for delivery of equipment
- Signs and flaggers to direct traffic around work or to detour routes
- Equipment, dust, vibration, and increased noise during work hours

The schedule and duration for construction is tentative and is subject to change as work progresses. We will continue to provide email notices with updates on timing of specific construction activities.

For more information

- Visit www.kingcounty.gov/sunsetheathfield
- For more information about the project schedule, please visit the “Construction” section of the FAQs on our website
- Call the project hotline at **206-296-7800**
- Email De’Sean Quinn at desean.quinn@kingcounty.gov

**Alternative Formats Available
206-477-5371 TTY Relay: 711**