



# Sunset and Heathfield Pump Stations and Force Main Upgrade

June 18, 2018

## Construction Update: Southeast 35th Place weekend closure planned from June 22 – June 25

Crews are continuing to install pipe via jack-and-bore on 164th Place Southeast and via open cut on Southeast 35th Place. As part of the open cut installation, crews plan to **close Southeast 35th Place between Southeast Eastgate Way and 164th Place Southeast from 10 p.m. Friday, June 22 to 5 a.m. Monday, June 25.**

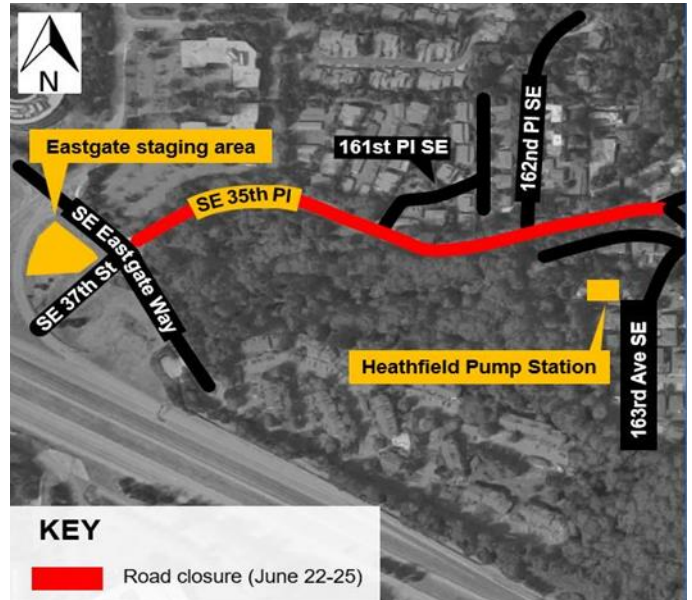
During the closure, you can expect:

- **Local access will be provided to residents:**
  - Residents living on 161st Place Southeast will be able to turn right onto Southeast 35th to access the detour route via Southeast Eastgate Way
  - Residents living on 162nd Place Southeast can turn left onto Southeast 35th to access the detour route via West Lake Sammamish Parkway
- **24/7 construction activities:** pipe will be installed in the center of the road via open cut
- Noise will be within limits allowed by City of Bellevue

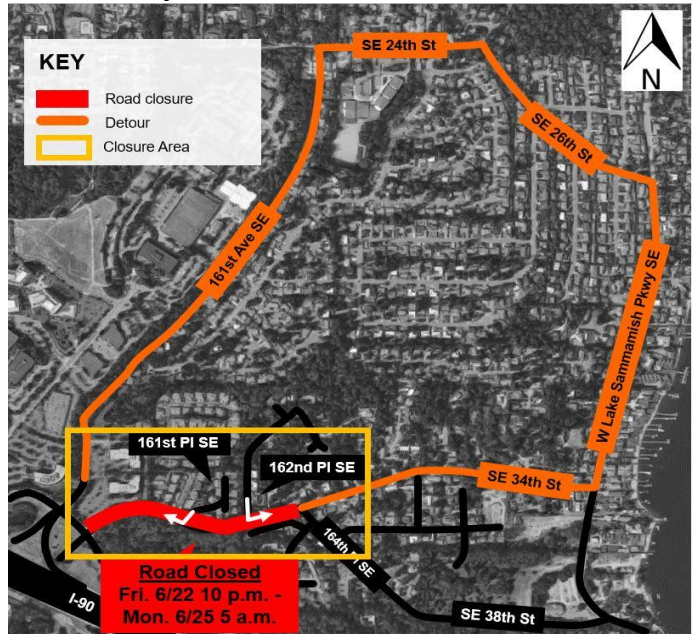
Prior to, and following, the weekend closure, you can expect:

- **Single-lane closures on Southeast 35th Place and 164th Place Southeast:**
  - Flaggers will be present to direct traffic through the closure
  - Drivers can expect traffic delays of up to 20 minutes during work hours
  - Both lanes of traffic will be open outside of work hours
- **Increased noise and vibrations:** Neighbors can expect noise and vibrations from excavation for pit creation, boring machines, vector trucks, pipe installation, and generators.

Closure Area Map



Detour Map



### For more information

- Visit [www.kingcounty.gov/sunsetheathfield](http://www.kingcounty.gov/sunsetheathfield)
- Call the project hotline at **206-296-7800**
- Email De'Sean Quinn at [desean.quinn@kingcounty.gov](mailto:desean.quinn@kingcounty.gov)

*The schedule and duration for construction is tentative and is subject to change as work progresses. We will continue to provide email notices with updates on timing of specific construction activities.*

**Alternative Formats Available**  
**206-477-5371 TTY Relay: 711**

- **Parking impacts:** Select street parking will be removed during this phase of work. Please adhere to the no parking signs posted by the contractor.
- **Mailbox impacts:** Crews may need to temporarily move mailboxes approximately 100 feet from their original location as they move through the corridor. The contractor will coordinate with mail delivery services and residents should not have issues receiving mail during periods of temporary mailbox relocation. King County will work directly with affected residents.
- **Access maintained for services:** Access will be maintained for emergency, waste pickup, and mail delivery

#### For more information

- Visit [www.kingcounty.gov/sunsetheathfield](http://www.kingcounty.gov/sunsetheathfield)
- Call the project hotline at **206-296-7800**
- Email De'Sean Quinn at [desean.quinn@kingcounty.gov](mailto:desean.quinn@kingcounty.gov)