



Sunset and Heathfield Pump Stations and Force Main Upgrade

June 20, 2018

Updated Closure Schedule: Southeast 35th Place weekend closure now planned to close from 6 p.m. June 22 – 6 a.m. June 25

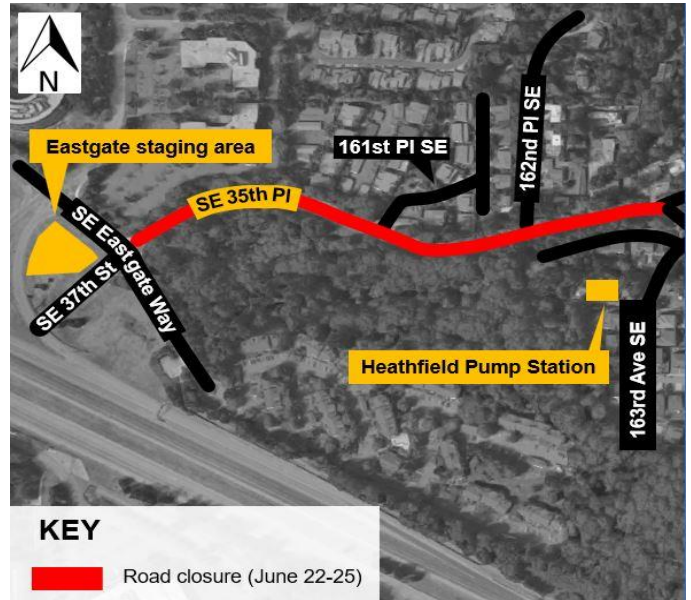
Crews have extended closure hours this weekend to continue with open cut pipe installation. **Southeast 35th Place will close between Southeast Eastgate Way and 164th Place Southeast from 6 p.m. Friday, June 22 to 6 a.m. Monday, June 25.**

As a reminder, you can expect the following during the closure:

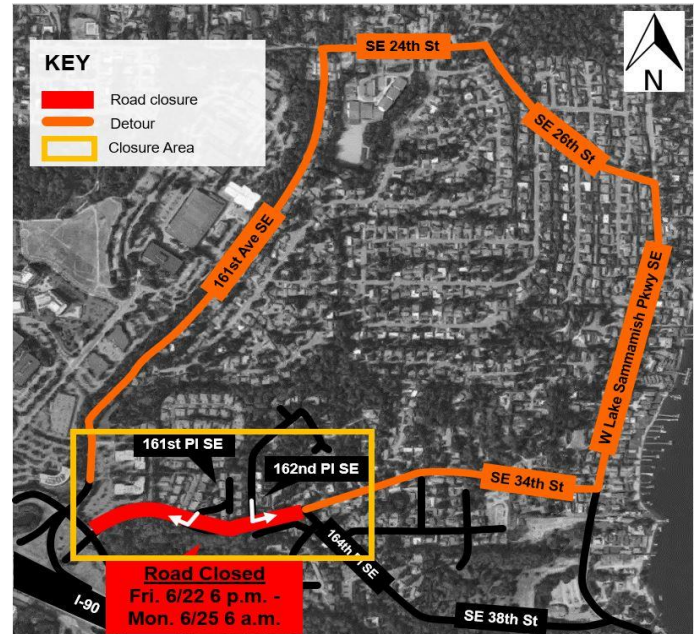
- **Local access will be provided to residents:**
 - Residents living on 161st Place Southeast will be able to turn right onto Southeast 35th Place to access the detour route via Southeast Eastgate Way
 - Residents living on 162nd Place Southeast can turn left onto Southeast 35th Place to access the detour route via West Lake Sammamish Parkway
- **24/7 construction activities:** pipe will be installed in the center of the road via open cut
- Noise will be within limits allowed by City of Bellevue

Please visit the project website (www.kingcounty.gov/sunsetheathfield) for more information about this closure.

Closure Area Map



Detour Map



For more information

- Visit www.kingcounty.gov/sunsetheathfield
- Call the project hotline at **206-296-7800**
- Email De'Sean Quinn at desean.quinn@kingcounty.gov

The schedule and duration for construction is tentative and is subject to change as work progresses. We will continue to provide email notices with updates on timing of specific construction activities.

Alternative Formats Available
206-477-5371 TTY Relay: 711