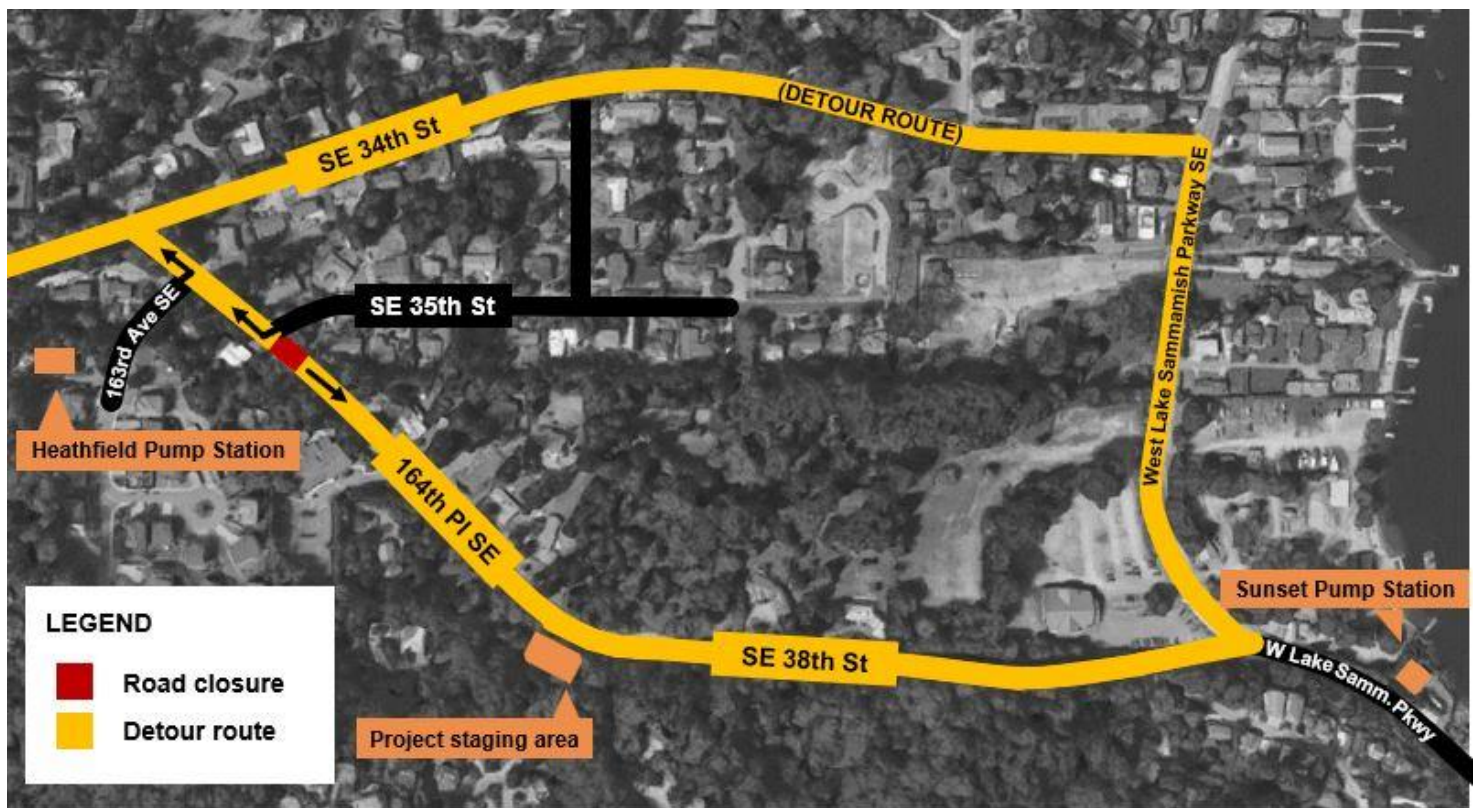




June 28, 2018

## Construction Update: *Upcoming long-term 164th Place Southeast road closure*

Crews continue to install new sewer pipe along 164th Place Southeast. The next phase of work on 164th Pl. S.E. requires crews to install pipe in a trench crossing the road. Because the trench will be too large to safely cover with steel plates, crews need to completely close a short section of 164th Pl. S.E., from Vasa Creek to the intersection with Southeast 35th Street (shown on the map below). This closure is **scheduled to begin on July 9 at 7 a.m.** and is expected to last 9 to 10 weeks.



### What you can expect:

- **164th Pl. S.E. full road closure** near S.E. 35th St. People driving will need use the posted detour route (see map).
- **Continued single-lane closures on Southeast 35th Place:**
  - Flaggers will be present to direct traffic through the closure
  - Drivers can expect traffic delays of up to 20 minutes during work hours
  - Both lanes of traffic will be open outside of work hours

### For more information

- Visit [www.kingcounty.gov/sunsetheathfield](http://www.kingcounty.gov/sunsetheathfield)
- Call the project hotline at **206-296-7800**
- Email De'Sean Quinn at [desean.quinn@kingcounty.gov](mailto:desean.quinn@kingcounty.gov)

*The schedule and duration for construction is tentative and is subject to change as work progresses. We will continue to provide email notices with updates on timing of specific construction activities.*

**Alternative Formats Available**  
206-477-5371 TTY Relay: 711

- **Temporary mailbox relocations along 164th Pl. S.E.:** Crews may need to temporarily move mailboxes approximately 100 feet from their original location as they complete work along 164th Pl. S.E. The contractor will coordinate with mail delivery services and residents should not have issues receiving mail during periods of temporary mailbox relocation. King County will work directly with affected residents.
- **Work hours:** weekdays 6:30 a.m. to 7 p.m. (equipment will not start until 7 a.m.)
- **Increased noise and vibrations:** Neighbors can expect noise and vibrations from excavation for pit creation, boring machines, vector trucks, pipe installation, and generators.
- **Parking impacts:** Select street parking will be removed during this phase of work. Please adhere to the no parking signs posted by the contractor.
- **Access maintained for services:** Access will be maintained for emergency services, waste pickup, and mail delivery

#### For more information

- Visit [www.kingcounty.gov/sunsetheathfield](http://www.kingcounty.gov/sunsetheathfield)
- Call the project hotline at **206-296-7800**
- Email De'Sean Quinn at [desean.quinn@kingcounty.gov](mailto:desean.quinn@kingcounty.gov)