



July 16, 2018

Construction Update: Southeast 35th Place weekend closure planned from July 20 – July 23

As part of the continued open cut installation on Southeast 35th Place, crews plan to **close Southeast 35th Place between Southeast Eastgate Way and 164th Place Southeast from 6 p.m. Friday, July 20 to 6 a.m. Monday, July 23.**

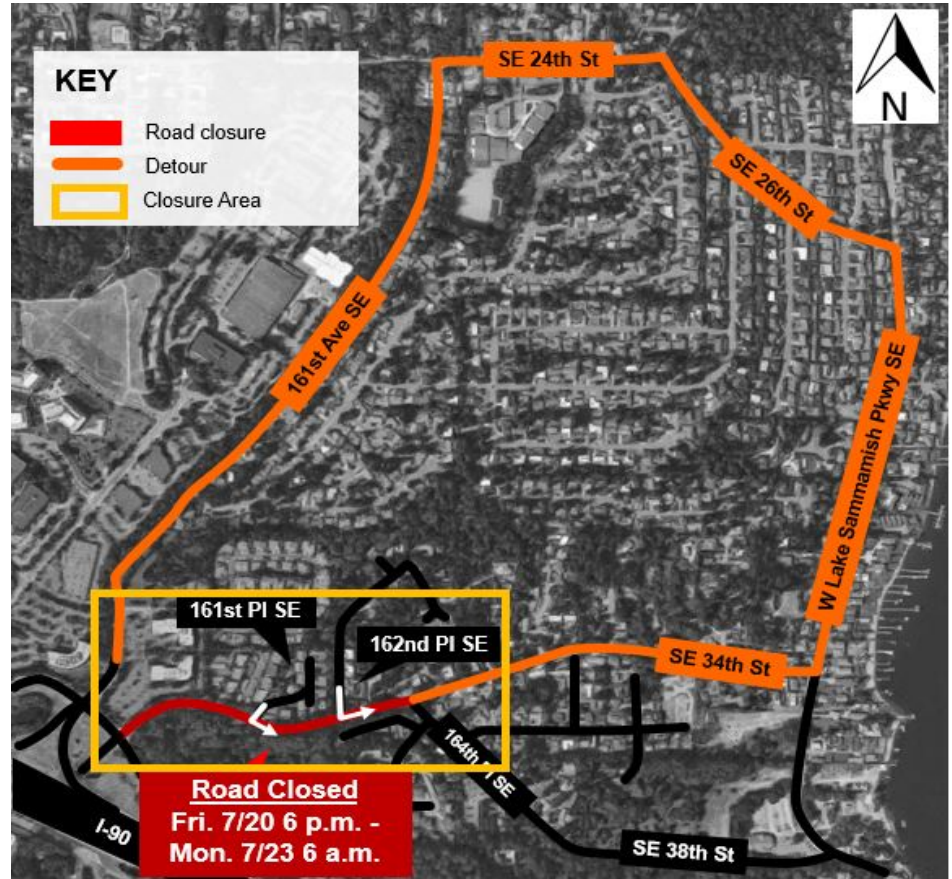
During the closure, you can expect:

- **Flaggers to provide local access to residents:**
 - Residents can turn left onto Southeast 35th to access the detour route via West Lake Sammamish Parkway
- **24/7 construction activities west of 161st Place Southeast:** The pipe will be installed in the center of the road via open cut
- Noise will be within limits allowed by City of Bellevue

Prior to, and following, the weekend closure, you can expect:

- **Single-lane closures on Southeast 35th Place:**
 - Flaggers will be present to direct traffic through the closure
 - Drivers can expect traffic delays of up to 20 minutes during work hours
 - Both lanes of traffic will be open outside of work hours
- **Increased noise and vibrations:** Neighbors can expect noise and vibrations from excavation for pit creation, boring machines, vector trucks, pipe installation, and generators.

Detour Map



Stay informed!

All future updates about this closure will be sent via email.

To receive the most up-to-date information, **please sign up for our email updates** at kingcounty.gov/sunsetheathfield.

If you have trouble signing up for email updates, please call us at 206-296-7800.

**Alternative Formats Available
206-477-5371 TTY Relay: 711**

- **Parking impacts:** Select street parking will be removed during this phase of work. Please adhere to the no parking signs posted by the contractor.
- **Mailbox impacts:** Crews may need to temporarily move mailboxes approximately 100 feet from their original location as they move through the corridor. The contractor will coordinate with mail delivery services and residents should not have issues receiving mail during periods of temporary mailbox relocation. King County will work directly with affected residents.
- **Access maintained for services:** Access will be maintained for emergency, waste pickup, and mail delivery

For more information

- Visit www.kingcounty.gov/sunsetheathfield
- Call the project hotline at **206-296-7800**
- Email Caryn Sengupta at caryn.sengupta@kingcounty.gov

The schedule and duration for construction is tentative and is subject to change as work progresses. We will continue to provide email notices with updates on timing of specific construction activities.

**Alternative Formats Available
206-477-5371 TTY Relay: 711**