



July 19, 2018

## Construction Update: Southeast 35th Place weekend closure postponed to 6 p.m. July 27 – 6 a.m. July 30

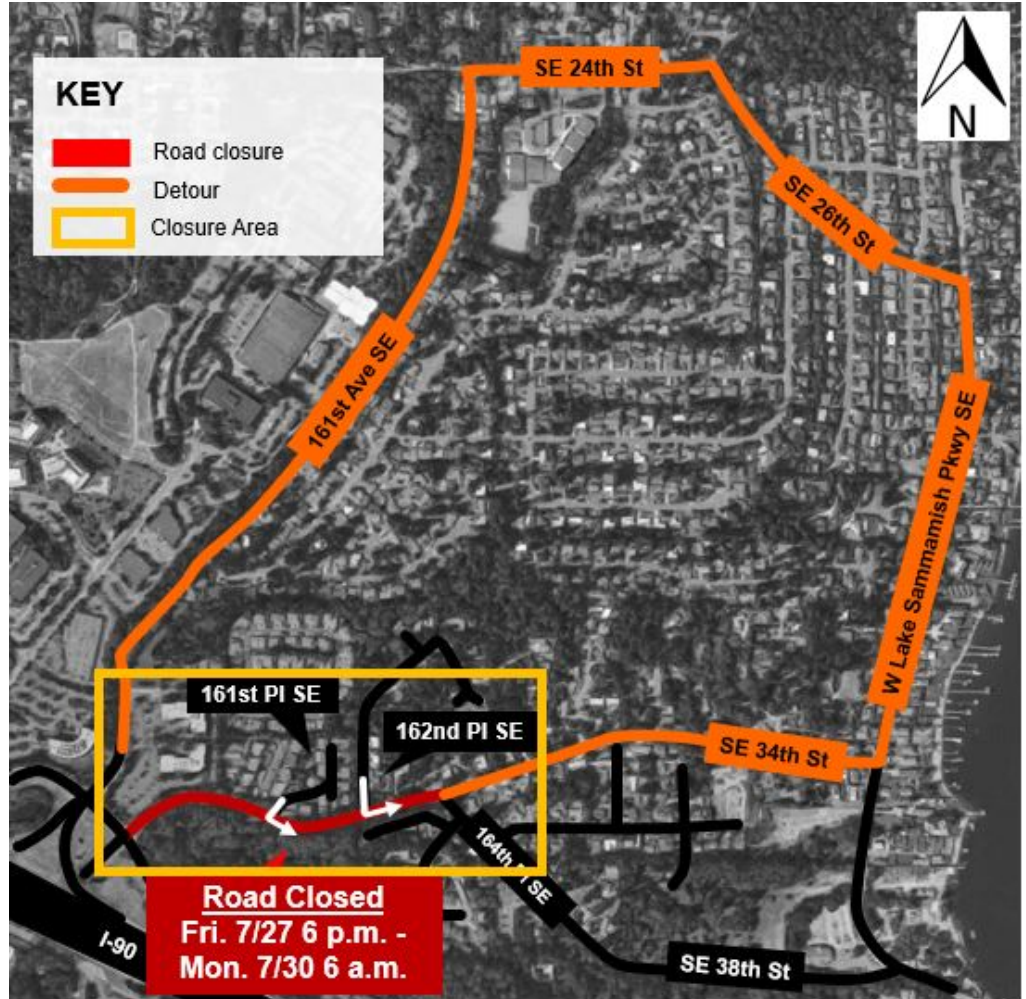
In our email updates, you often see the phrase “the schedule and duration for construction is tentative and subject to change.” We wanted to give you an update on one of those changes – crews have rescheduled this weekend’s **closure of Southeast 35th Place between Southeast Eastgate Way and 164th Place Southeast to 6 p.m. Friday, July 27 to 6 a.m. Monday, July 30.**

As a reminder, you can expect the following during the closure:

- **Flaggers will provide local access to residents:**
  - Residents can turn left onto Southeast 35th to access the detour route via West Lake Sammamish Parkway
- **Crews will work around-the-clock, west of 161st Place Southeast:** The pipe will be installed in the center of the road via open cut
- Noise will be within limits allowed by City of Bellevue

Prior to, and following, the weekend closure, you can expect:

- **Single-lane closures on Southeast 35th Place:**
  - Flaggers will be present to direct traffic through the closure
  - Drivers can expect traffic delays of up to 20 minutes during work hours
  - Both lanes of traffic will be open outside of work hours



**Alternative Formats Available**  
206-477-5371 TTY Relay: 711

- **Increased noise and vibrations:** Neighbors can expect noise and vibrations from excavation for pit creation, boring machines, vactor trucks, pipe installation, and generators.
- **Access maintained for services:** Access will be maintained for emergency, waste pickup, and mail delivery

#### For more information

- Visit [www.kingcounty.gov/sunsetheathfield](http://www.kingcounty.gov/sunsetheathfield)
- Call the project hotline at **206-296-7800**
- Email Caryn Sengupta at [caryn.sengupta@kingcounty.gov](mailto:caryn.sengupta@kingcounty.gov)

*The schedule and duration for construction is tentative and is subject to change as work progresses. We will continue to provide email notices with updates on timing of specific construction activities.*

**Alternative Formats Available**  
**206-477-5371 TTY Relay: 711**