



Nov. 8, 2018

## Construction Update: SE 35th PI weekend full closure planned from November 16 – 19 for road restoration

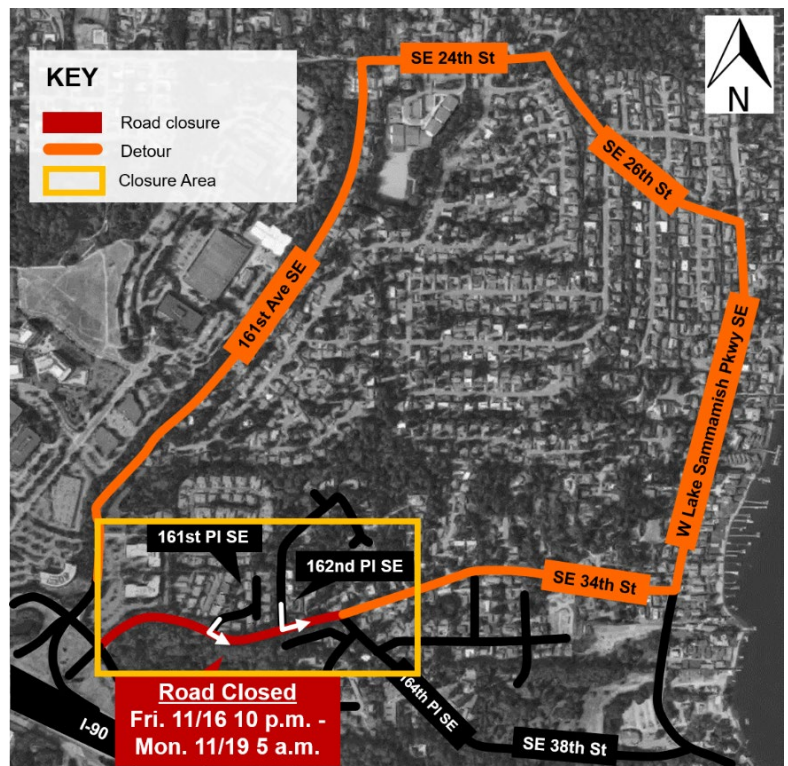
King County is working with the contractor to complete pipe installation and pump station upgrades as efficiently and safely as possible. We appreciate your patience as we complete this important work.

### Pavement restoration on SE 35th PI – full road closure:

Crews will be working to restore the pavement on SE 35th PI between SE Eastgate Way and 162nd PI SE.

#### Details:

- The work will close SE 35<sup>th</sup> PI between SE Eastgate Way and 162<sup>nd</sup> PI SE.
- Detour routes around the area will be the same as those during the full closure of SE 35<sup>th</sup> PI earlier this year
- Current schedule: from 10 p.m. Friday, November 16 to 5 a.m. Monday, November 19.
- This work could be delayed by rain. We will let you know by email if the schedule changes.



### During the full closure, you can expect:

- Local access for residents:
  - Residents living on 161st PI SE and 162nd PI SE can access their homes. Note: There may be **delays of up to 15 minutes**.
- Increased noise and vibrations.
- Crews working 24hrs around the clock.

**Alternative Formats Available**  
**206-477-5371 TTY Relay: 711**

## Ongoing construction activities:

- Crews will work on Monday, Nov. 12, Veteran's Day.
- Full closures on 164th PI SE: Two full 24-hour road closures near SE 35th St and 163rd Ave SE
- Intermittent single-lane closures on SE 35th PI, 163rd Ave SE, & W Lake Sammamish Pkwy SE

## What to expect during construction:

- Flaggers and signs detouring drivers in around work areas.
- Access to homes remain open.
- Increased noise and vibrations from construction activities.
- Select street parking may be removed during pipe installation - please look for the no parking signs.
- Emergency services, waste pickup, and mail delivery maintained.

## Project Area Map



### For more information

- Visit [www.kingcounty.gov/sunsetheathfield](http://www.kingcounty.gov/sunsetheathfield)
- Call the project hotline at **206-296-7800**
- Email Caryn Sengupta at [caryn.sengupta@kingcounty.gov](mailto:caryn.sengupta@kingcounty.gov)

*The schedule and duration for construction is tentative and is subject to change as work progresses. We will continue to provide email notices with updates on timing of specific construction activities.*