



King County

Department of Natural Resources and Parks
Wastewater Treatment Division

Sunset and Heathfield Pump Stations and Force Main Upgrade

March 14, 2019

Construction Update: Two upcoming road closures and shoring removal

SE 35th PI Full Closure – weekend work

Crews will close a segment of SE 35th PI near the intersection of 164th PI SE to install pipe using open cut. This work will begin as soon as **8 p.m. on Friday, March 22** and may continue until **5 a.m. on Monday, March 25**.

Crews expect to work around-the-clock to install pipe across the width of SE 35th PI as quickly as possible. This work is weather-dependent and timing is subject to change.

Closure and detour maps on back.

Eastgate off-ramp closure – overnight work

On Monday, March 25 through Thursday, March 28, crews plan to work overnight from 8 p.m. to 5 a.m. to install underground electric cables across SE Eastgate Way, near the 161st Ave SE off-ramp from I-90, to support the new pipe system.

Please note: *the off-ramp will be closed to traffic during overnight work and drivers should use the 150th Ave SE off-ramp for the duration of night-time work.*

Shoring removal and backfill

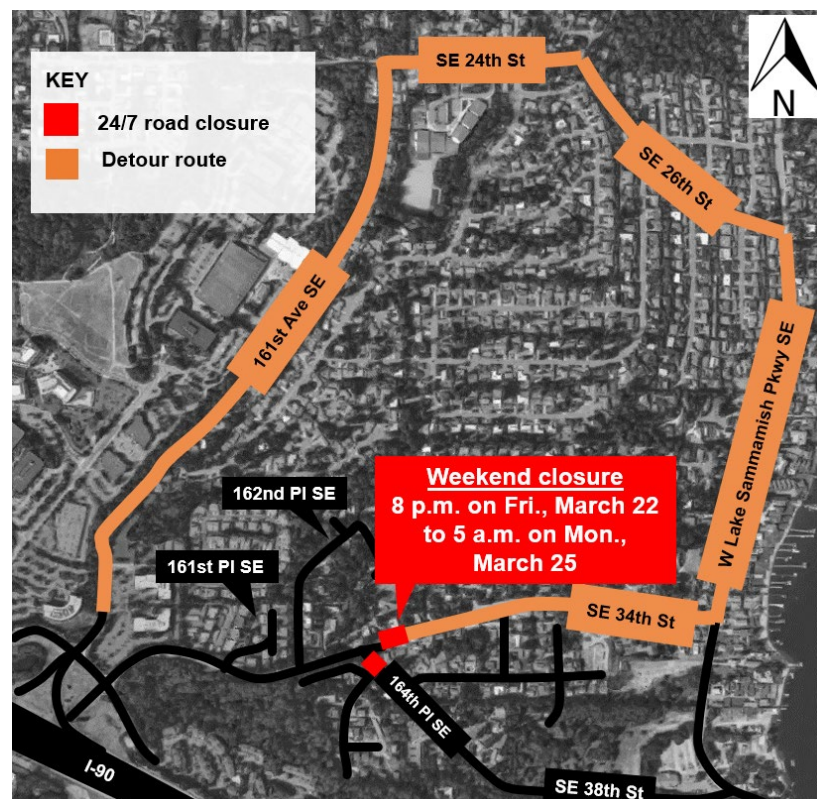
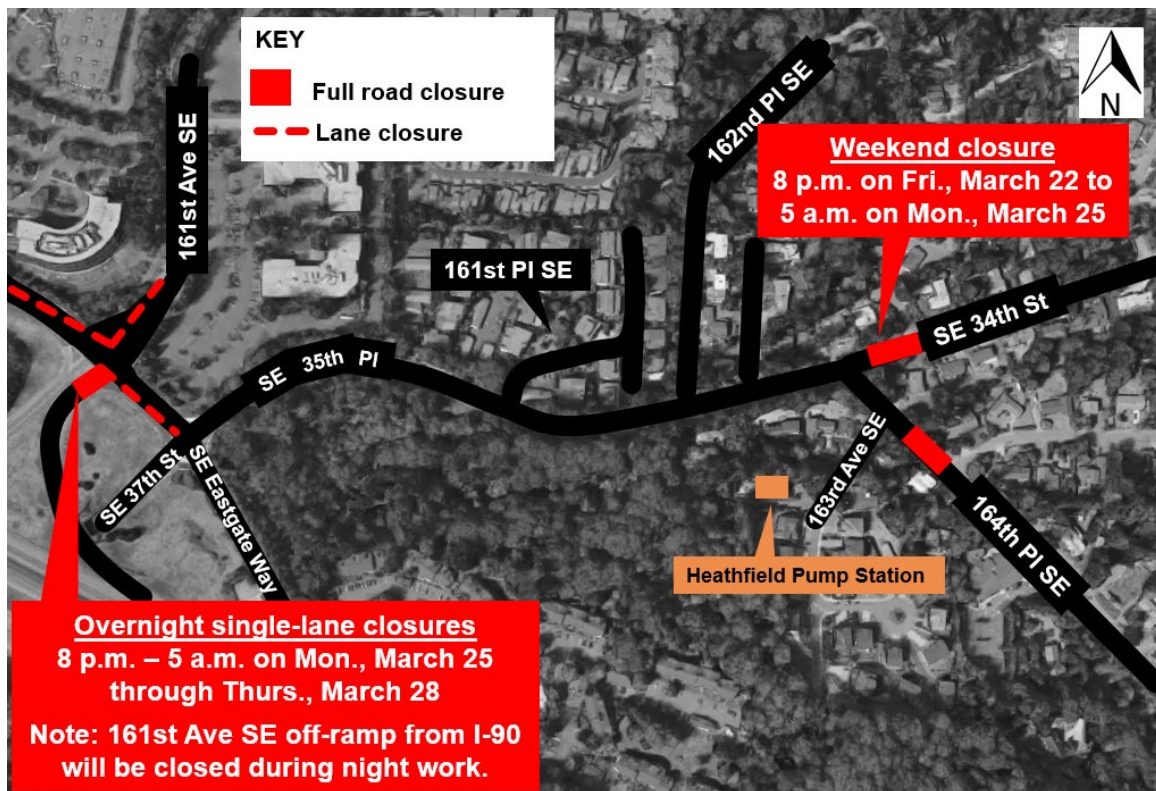
As crews connect the new pipe to the existing system, they will fill in the pits they have been using to install pipe on 164th PI SE and near the Heathfield Pump Station. Before filling in the pits, crews must remove the shoring, or support structures within the pits. This work involves increased noise and vibration and will continue for approximately two weeks.

Stay informed!

We will send out all future updates for this work by email, **please sign up for our email updates** at kingcounty.gov/sunsetheathfield.

If you have trouble signing up for email updates, please call 206-296-7800.

Closure and Detour Maps



What to expect:

- **Closure work hours:**
 - For SE 35th Pl: Around-the-clock, including overnight, between 8 p.m. on Friday, March 22 and 5 a.m. on Monday, March 22.
 - For Eastgate off-ramp and single lane closures: 8 p.m. to 5 a.m. Monday, March 25 through Thursday, March 28.
- **Increased noise and vibrations:** Neighbors can expect noise and vibrations from open cut pipe installation.
- **Lights on SE 35th Pl:** Lights will be used to illuminate the worksite overnight.
- **Flaggers and signage:** Crews will assist drivers in detouring around closures. Access to homes and driveways will be maintained and prioritized for the duration of closures.
- **Access maintained for services:** Access will be maintained for emergency services, waste pickup, and mail delivery.

Please reference the project map above and the [project website](#) for the most up-to-date information on ongoing closures in the project area.

For more information

- Visit www.kingcounty.gov/sunsetheathfield
- Call the project hotline at **206-296-7800**
- Email Caryn Sengupta at caryn.sengupta@kingcounty.gov

The schedule and duration for construction is tentative and is subject to change as work progresses. We will continue to provide email notices with updates on timing of specific construction activities.

Alternative Formats Available
206-477-5371 TTY Relay: 711