



King County

Department of Natural Resources and Parks
Wastewater Treatment Division

Sunset and Heathfield Pump Stations and Force Main Upgrade

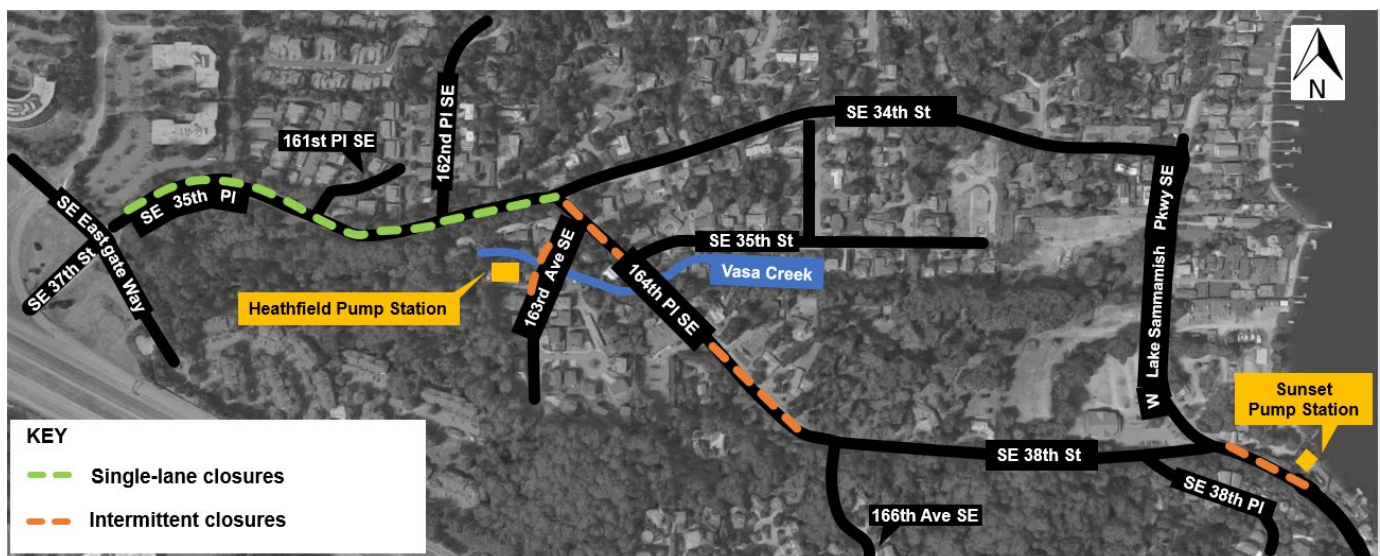
August 15, 2019

Construction Update: *Upcoming restoration work on SE 35th PI will require lane closures*

Grinding and paving is now complete on 164th PI SE. Beginning as early as Tuesday, August 20, the contractor will start work on SE 35th PI. They will begin by restoring curb ramps and replacing the gutters on the north side of the road.

This work will require single-lane closures on SE 35th PI starting as early as Tuesday, August 20 and continuing through Sunday, August 25.

Weather permitting, crews will pour the concrete for the curb ramps and install the gutters Saturday and Sunday.



What to expect during this restoration work on SE 35th PI:

- **Work hours:** 7 a.m. to 7 p.m.
- **Single-lane closure:** SE 35th PI between Tuesday, August 20 and Sunday, August 25 during work hours.

- **Flaggers to direct traffic through the work zone:** Flaggers will maintain access on SE 35th PI during single-lane closures but please expect delays as you pass through the work zone.
- **Access maintained for services:** Access will be maintained for emergency services, waste pickup, and mail delivery.
- **Increased noise and vibrations:** During construction hours you may experience increased noise and vibrations from the grinding and paving process including noise from paving rollers, grinding equipment and jackhammers.

For more information about ongoing road closures in the area, please visit the [project website](#).

For more information

- Visit www.kingcounty.gov/sunsetheathfield
- Call the project hotline at 206-296-7800
- Email Caryn Sengupta at caryn.sengupta@kingcounty.gov

The schedule and duration for construction is tentative and is subject to change as work progresses. We will continue to provide email notices with updates on timing of specific construction activities.

For more information

- Visit www.kingcounty.gov/sunsetheathfield
- Call the project hotline at **206-296-7800**
- Email Caryn Sengupta at caryn.sengupta@kingcounty.gov