

## Construction Update: Upcoming weekend road closures on SE 35th PI for sidewalk restoration and street paving

*Please note that all work described is weather dependent.*

King County's contractor is continuing [single-lane closures](#) on SE 35th PI through Thursday, August 29 to restore curbs and replace gutters. **To complete restoration of the sidewalk and to grind and pave the road, crews plan to fully close SE 35th PI over two weekends:**

### **September 6-9 – full closure for sidewalk restoration**

Crews plan to close SE 35th PI from 6 p.m. on Friday, September 6 through 5 a.m. on Monday, September 9 to restore the sidewalk.

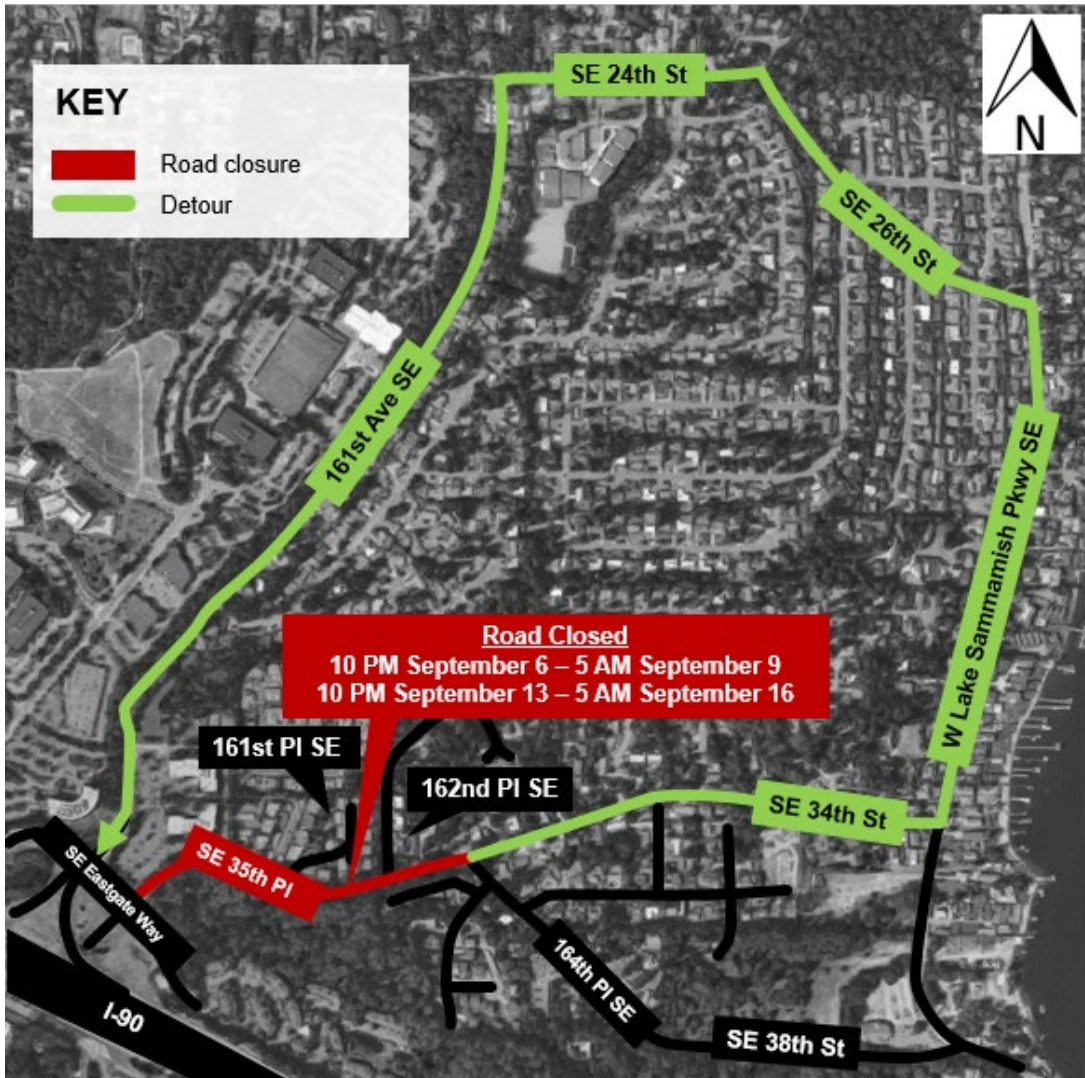
### **September 13-16 – full closure for road grinding and paving**

Crews plan to close SE 35th PI from 6 p.m. on Friday, September 13 through 5 a.m. on Monday, September 16 to grind and repave the street.

***Please note possible nighttime work:*** The contractor may grind the road during evening hours the weekend of September 13 - this work is not yet scheduled. We will provide updates through this email list and on our website as soon as we have more information from the contractor.

### **What to expect during this work on SE 35th PI:**

- **Closure area:** SE 35th PI between 164th PI SE and SE Eastgate Way (see map below).
- **Closure timing:** From 6 p.m. on Friday through 5 a.m. on Monday.
- **Work hours:** currently 7 a.m. to 7 p.m. – see note above about possible nighttime work.
- **Increased noise and vibrations:** You may experience increased noise and vibrations from the grinding and paving process, including noise from paving rollers, grinding equipment and jackhammers.
- **Rough pavement following grinding:** After grinding, there may be rough pavement and steel plates on the roadway until it is paved.
- **Detour for pedestrians and cyclists:**
  - **September 6-9 closure: Sidewalk repair:** Pedestrians and cyclists will detour through closed traffic lane.
  - **September 13-16 closure: Grinding and street repaving:** Pedestrians and cyclists can use the sidewalk to pass through the area.
- **Detour for vehicles:** See map below.
- **Local access for residents:** During the weekend closures, residents of 161st and 162nd PI SE. will be able to access their homes via SE 35th PI. Please follow the directions of the flaggers and see map for detours. Please plan for delays of up to 15 minutes for crews to move equipment to allow residents to move through work zone.
- **Access maintained for services:** Access will be maintained for emergency services, waste pickup, and mail delivery.



Thank you for your patience while the contractor completes this restoration work.

For more information about ongoing road closures in the area, please visit the [project website](#).

*The schedule and duration for construction is tentative and is subject to change as work progresses. We will continue to provide email notices with updates on timing of specific construction activities.*

**For more information:**

- Visit [www.kingcounty.gov/sunsetheathfield](http://www.kingcounty.gov/sunsetheathfield)
- Call the project hotline at 206-296-7800
- Email Caryn Sengupta at [caryn.sengupta@kingcounty.gov](mailto:caryn.sengupta@kingcounty.gov)