



King County

Department of Natural Resources and Parks
Wastewater Treatment Division

Sunset and Heathfield Pump Stations and Force Main Upgrade

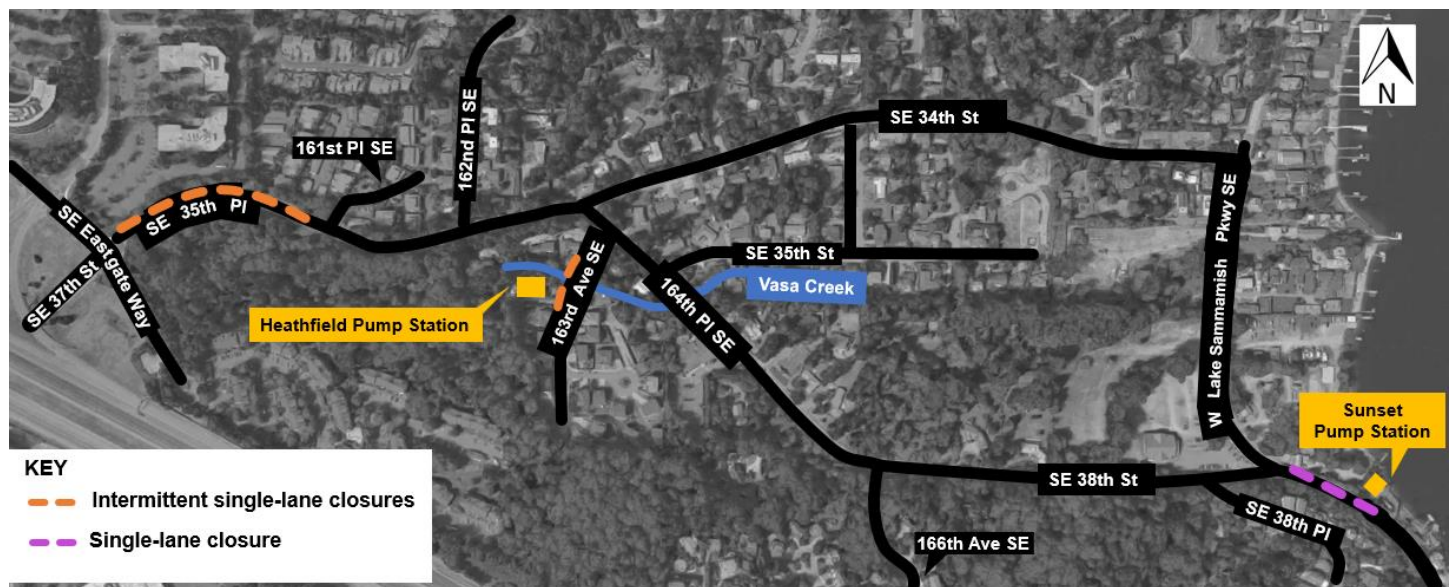
August 31, 2020

Construction Update: Single-lane closure scheduled for September 2 on West Lake Sammamish Pkwy

King County's contractor plans to close a single lane of W Lake Sammamish Pkwy on Wednesday, September 2 between 8 a.m. and 4 p.m to remove an old generator from the Sunset Pump Station.

King County's contractor also plans to continue intermittent single-lane closures for landscape restoration on SE 35th PI through mid-September. When restoration is complete on SE 35th PI, the contractor plans to begin landscape restoration and installation of the ornamental fence at the Sunset Pump Station.

Thank you for your patience while crews complete this restoration work.



For more information or questions:

- Visit www.kingcounty.gov/sunsetheathfield
- Call the project hotline at 206-296-7800
- Email Caryn Sengupta at caryn.sengupta@kingcounty.gov