



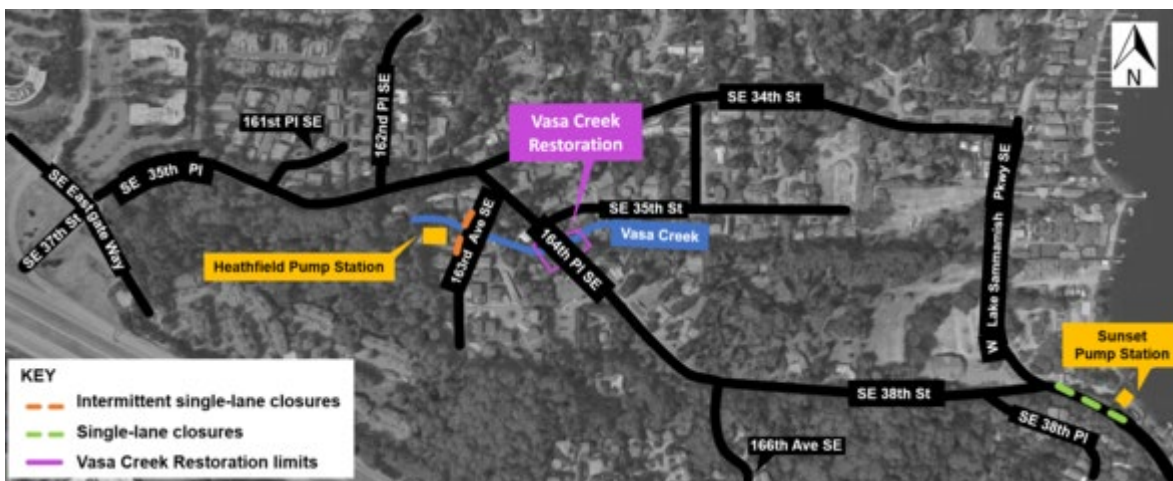
King County
Department of Natural Resources and Parks
Wastewater Treatment Division

Sunset and Heathfield Pump Stations and Force Main Upgrade

October 16, 2020 Construction Update: Restoration and pump station work continue

Overview of project activity

- The in-stream restoration on Vasa Creek near the bridge on 164th PI SE is complete. At the end of the month, EarthCorps will remove invasive vegetation and plant native vegetation nearby to keep water in the stream cool and provide animal habitat.
- King County's contractor plans to begin landscape restoration and installation of the ornamental fence at the Sunset Pump Station as early as Monday October 19.
- Crews anticipate a single-lane closure on W Lake Sammamish Pkwy for a day or two while they re-paint the lines and crosswalks. This work is weather dependent and may start as soon as October 23, 2020.
- Work inside the pump stations continues.



For more information:

- Visit www.kingcounty.gov/sunsetheathfield
- Call the project hotline at 206-296-7800
- Email Caryn Sengupta at caryn.sengupta@kingcounty.gov