



**King County**

Department of Natural Resources and Parks  
Wastewater Treatment Division

# Sunset and Heathfield Pump Stations and Force Main Upgrade

January 8, 2021

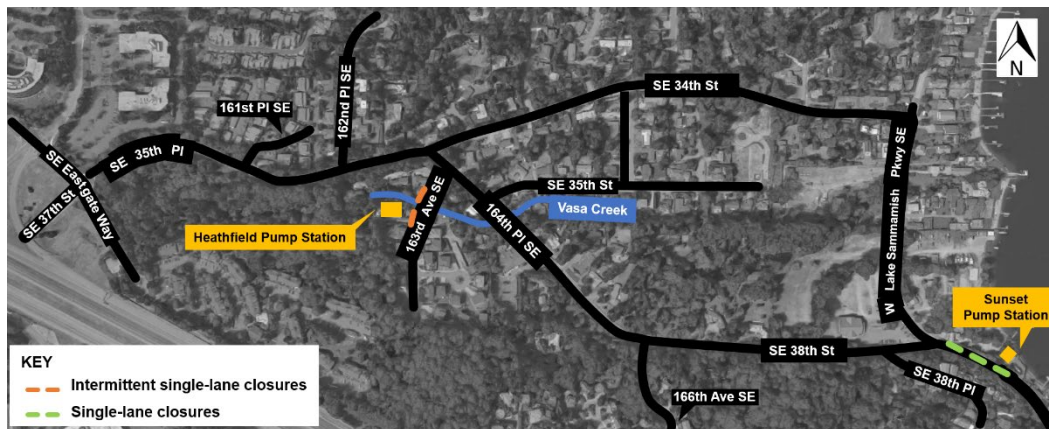
## Construction Update: Single-lane closure planned for January 12 & 19 on West Lake Sammamish Pkwy

King County's contractor continues to work inside both pump stations and outside on landscape restoration.

Crews plan to close a single lane of W Lake Sammamish Pkwy on Tuesday, January 12, and January 19 to install porous flexible pavement at the Sunset Pump Station. The porous flexible pavement will help manage stormwater runoff and protect both people and fish in Lake Sammamish.

This work is weather dependent. We'll post an update on the [project website](#) if the dates shift.

Thank you for your patience as work continues.



### For more information:

- Visit [www.kingcounty.gov/sunsetheathfield](http://www.kingcounty.gov/sunsetheathfield)
- Call the project hotline at 206-296-7800
- Email Caryn Sengupta at [caryn.sengupta@kingcounty.gov](mailto:caryn.sengupta@kingcounty.gov)