



**King County**

Department of Natural Resources and Parks  
Wastewater Treatment Division

# Sunset and Heathfield Pump Stations and Force Main Upgrade

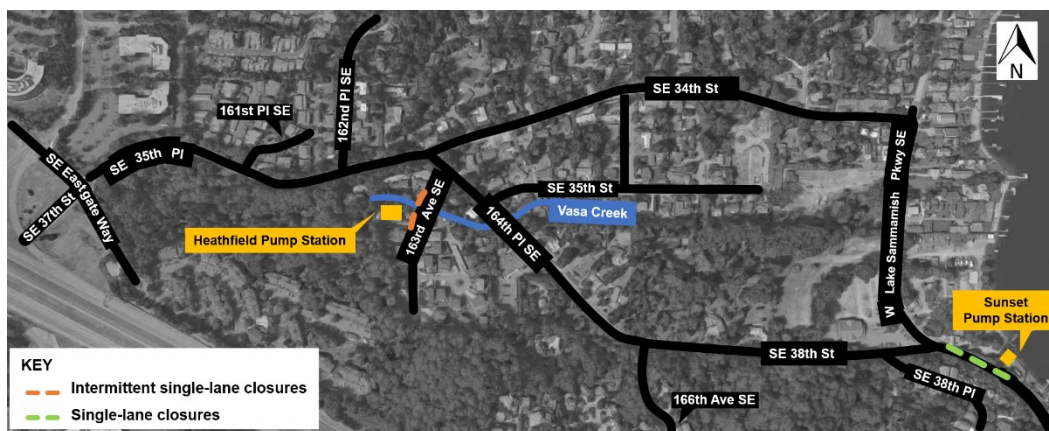
February 5, 2021

## Construction Update: Single-lane closure planned for February 9 on West Lake Sammamish Pkwy

King County's contractor continues to work inside both pump stations and outside on landscape restoration.

Crews plan to close a single lane of W Lake Sammamish Pkwy on Tuesday, February 9 to pave the driveway at the Sunset Pump Station. In advance of the paving, crews will be using saw cutters to demo the existing pavement. This work is weather dependent. We'll post an update on the [project website](#) if the dates shift.

Thank you for your patience as work continues.



### For more information:

- Visit [www.kingcounty.gov/sunsetheathfield](http://www.kingcounty.gov/sunsetheathfield)
- Call the project hotline at 206-296-7800
- Email Caryn Sengupta at [caryn.sengupta@kingcounty.gov](mailto:caryn.sengupta@kingcounty.gov)