



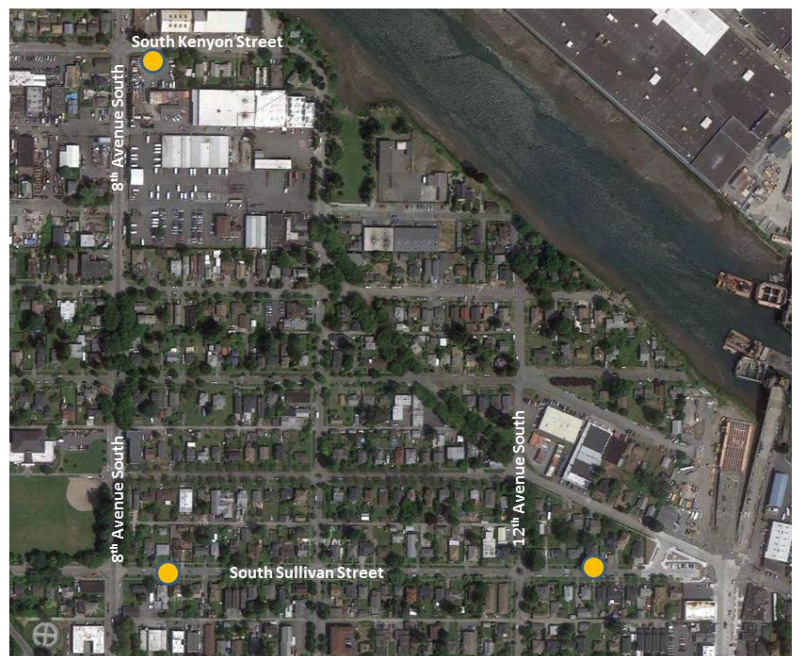
## Well installation in your neighborhood the week of November 11

King County crews will be working in your neighborhood the week of November 11, 2013. The crews will be installing groundwater monitoring wells to inform the design of future King County sewer projects in your area.

This work requires crews to use trucks and special machinery to drill holes between 20 and 40 feet deep and 6-12 inches in diameter.

### What you can expect

- Crew, trucks and drilling equipment in the street and public right-of-way between the curb and the sidewalk
- Increased noise on site
- Temporary parking restrictions near well locations
- Work hours will be weekdays from 7:00 a.m. – 5:00 p.m.
- Up to two days of work to install wells
- Work areas will be restored after wells are installed
- Three wells will be drilled in the neighborhood, see map at right
- Occasional equipment on site after wells are drilled to monitor and sample water levels



Los contratistas del condado de King estarán trabajando pronto en su área. Puede que usted note su labor y que esto afecte su rutina diaria. Si tiene alguna pregunta o inquietud, tenga a bien de contactarse con Kristine Cramer, en el número que aparece debajo. Se le puede proporcionar un intérprete sin cargo.

景郡承辦商將會很快在您的範圍內工作。您可能會注意到他們的工作，因為他們的工作會擾亂您的日常生活模式。若您有疑問或顧慮，請撥打以下電話號碼，聯絡 Kristine Cramer。我們會為您提供免費的傳譯服務。

Nhà thầu King County sẽ sớm làm việc trong khu vực của bạn. Bạn có thể thấy công việc này và nó có thể phá vỡ thói quen hàng ngày của bạn. Nếu bạn có câu hỏi hoặc quan tâm, xin vui lòng liên hệ với Kristine Cramer theo số dưới đây. Một thông dịch viên có thể được cung cấp cho bạn miễn phí.

For more information contact Kristine Cramer at: 206-477-5415 or via email: [Kristine.cramer@kingcounty.gov](mailto:Kristine.cramer@kingcounty.gov)

**ALTERNATIVE FORMATS AVAILABLE**  
206-477-5371 / 711 (TTY Relay)