

WEST DUWAMISH CSO CONTROL PROJECT



King County
Protecting Our Waters
Doing our part on rainy days

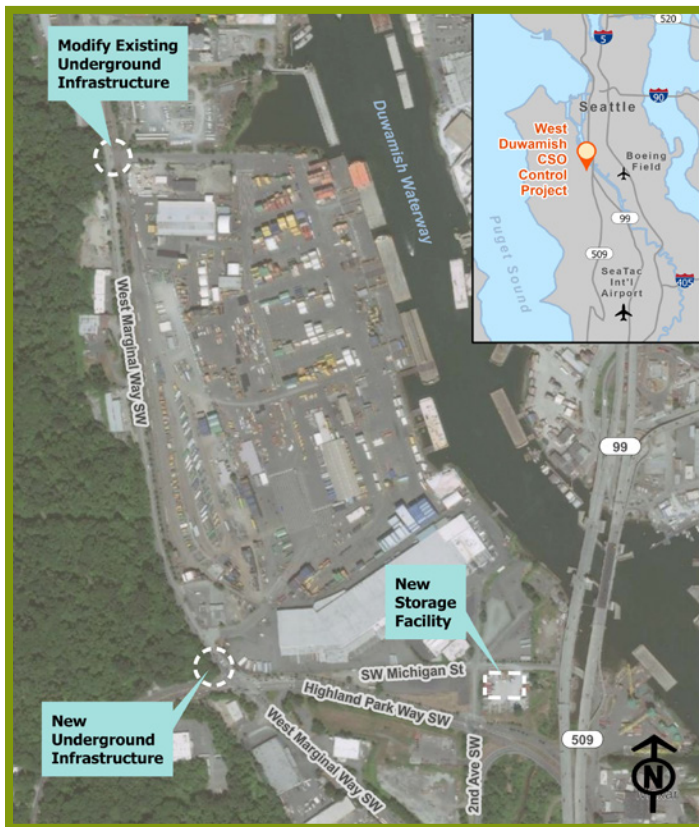
November 2021

King County is committed to a healthy Duwamish River

New storage tank near SR 509 will reduce sewage and stormwater spills into the Duwamish River during big storms

Like many cities around the country, older parts of King County’s sewer system use the same set of pipes to carry both sewage and stormwater. During storms, the pipes can fill with stormwater that runs off roofs, driveways, and

streets. When the system is overwhelmed, it is designed to overflow. These overflows are called Combined Sewer Overflows, or CSOs. To keep the sewer system working and to prevent sewer backups, the excess water and sewage is released into our local water bodies through CSOs.



Over the past several years, King County has been planning a project to reduce CSOs from the South Park and Highland Park drainage basins into the Duwamish River to no more than one overflow per year on average, which is a standard set by the Washington State Department of Ecology. This project includes a storage tank to hold stormwater and wastewater during large storms, and changes to existing infrastructure to divert water to the tank when needed.

The storage tank will be located near the SR 509 bridge. Building the tank at this location has several benefits:

- Construction will not impact residential areas of South Park or Highland Park.
- Most construction will take place off the road, so we can keep traffic moving.
- It has the lowest construction and operational costs of the options we studied, keeping rates lower for our ratepayers.

The project is in the design phase, and we expect to start construction in 2025.

Timeline

2013	2014	2015	2016	2017	2018	2019	2020	2021	2022	2023	2024	2025	2026	2027
			Planning			Design						Construction		

RainWise

What's next: Environmental review

In early 2022, King County will conduct an environmental review of the project under the State Environmental Policy Act (SEPA). The County will complete a SEPA environmental checklist that describes the project and identifies possible environmental impacts. Once complete, the Plan will be available for public review and comment

Our commitment to public health and the environment

From large-scale planning efforts like the Clean Water Plan to support for rain gardens and other green stormwater solutions on private property, King County is committed to protecting public health and the environment in the Duwamish River and surrounding communities.

Find out more about our commitment.

The **Georgetown Wet Weather Treatment Station** will treat up to 70 million gallons a day of combined rain and sewage that would otherwise have gone directly into the Duwamish River during big storms.



The **Clean Water Plan** effort is currently underway. With many water quality priorities, this new wastewater plan will guide King County's decisions about investments for decades to come.



RainWise helps private property owners install rain gardens and cisterns to manage the rain that falls on their roofs.



Green Stormwater Infrastructure (GSI) mini-grants provide money for homeowners who are not eligible for RainWise to install rain gardens, cisterns and other green solutions on their property.

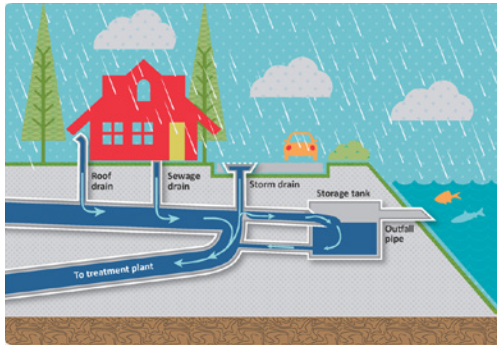


The **Lower Duwamish Waterway Superfund Cleanup** has been actively cleaning up waterway pollution for years, with much more work to come.



The West Duwamish CSO Control Facility will protect the investments being made to clean up the Duwamish River and improve conditions for nearby communities.

- The storage tank will reduce untreated sewage and stormwater that spills into the river during large storms.



- King County will build the tank near the Duwamish River Trail. There are opportunities to improve that area, and we will be asking for your thoughts as we move forward with the project's design.
- Our team will be looking for more community ideas to improve water quality and advance equity in the South Park and Highland Park neighborhoods.

What you can expect from us:



King County is committed to sharing project information, reducing project impacts where possible, and identifying opportunities to improve living conditions in riverside communities. We will work with you through:

- One-on-one and small group meetings
- Attendance at fairs and festivals
- Online and in-person community meetings
- Project newsletters and fliers
- Email and/or text updates
- Project website

Share your thoughts about the project:

Kristine Cramer, Kristine.cramer@kingcounty.gov or 206-477-5415

Sign up for email or text alerts and learn more about the project at the website:

kingcounty.gov/westduwamish-cso

West Duwamish CSO control project history



- This project was initially envisioned as a green stormwater infrastructure (GSI) project. GSI uses plants, trees, soils, and other natural methods to allow stormwater to slowly soak into the ground. Stormwater that soaks into the ground does not go into our pipes, reducing the chance of overflows during storms.
- Field investigations in 2015 and 2016 showed that GSI alone would not reduce overflows into the river enough to meet our CSO requirements. We needed a storage tank too.
- In addition to the amount of water we need to hold during big storms, our investigations highlighted the risks of adding more water below ground in the South Park neighborhood where flooding is an issue. As a result, King County decided to focus on a storage tank as the primary solution for the combined sewer overflows.
- The project has been quiet for several years as WTD worked on purchasing the property for the project. The negotiations are ongoing, but the project continues to move forward to meet legal obligations.
- Finally, a newly developed climate model showed the need to store more water during large storms. As a result we need a bigger tank. The project team is now considering how to use the property to meet that goal.



King County
Department of Natural Resources and Parks
Wastewater Treatment Division
201 S. Jackson St., KSC-NR-0505
Seattle, WA 98104-3855



PRSR STD
US POSTAGE
PAID
SEATTLE, WA
PERMIT NO. 836

King County is building a storage tank near South Park to protect the Duwamish River during large storms. Read inside about our commitment to water quality and your community.

El condado de King está construyendo un tanque de almacenamiento cerca de South Park para proteger al río Duwamish durante las grandes tormentas. Encuentre este comunicado en línea, en español. www.kingcounty.gov/westduwamish-cso

Quận King đang xây dựng một bể chứa gần South Park để bảo vệ Sông Duwamish trong những trận bão lớn. Xem bản tin này trực tuyến bằng Tiếng Việt. www.kingcounty.gov/westduwamish-cso

Si tiene alguna pregunta, comuníquese con Kristine Cramer al 206-477-5415. Le proporcionaremos un intérprete sin costo.

Nếu quý vị có thắc mắc, hãy gọi Kristine Cramer theo số 206-477-5415. Thông dịch viên sẽ được cung cấp miễn phí.

Alternative formats available
206-477-5371 or TTY relay: 711

Translation services available upon request



King County

Protecting Our Waters

Doing our part on rainy days