

WEST DUWAMISH WET WEATHER STORAGE FACILITY



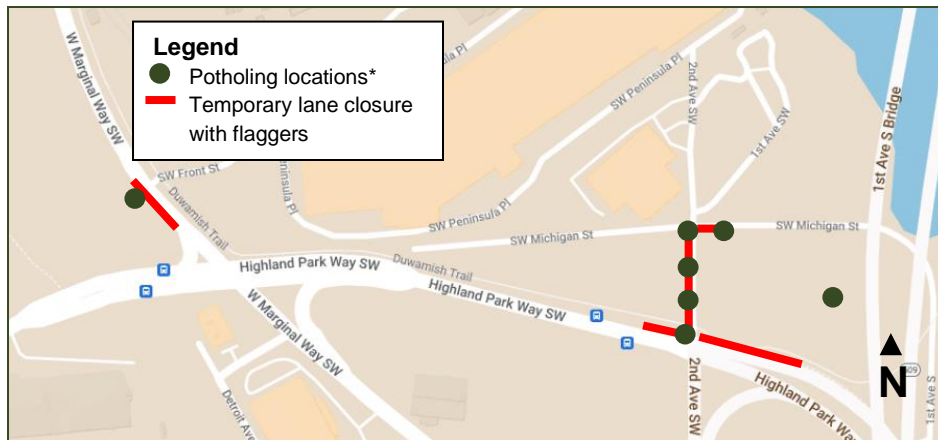
 **King County**
Protecting Our Waters
Doing our part on rainy days

May 2023

Potholing near 1st Ave S Bridge beginning May 25

King County Wastewater Treatment Division is building a wet weather storage facility near the intersection of SW Michigan Street and 2nd Ave SW to reduce combined sewer overflows into the Duwamish River. Starting as early as May 25, crews will spend up to four business days potholing, or digging small holes, to better understand the locations and condition of utility lines including sewer, power, water, telephone, and gas lines. This work will occur at the storage facility site and near the following locations:

- 2nd Ave SW between SW Michigan Street and Highland Park Way SW
- SW Michigan Street east of 2nd Ave SW
- Highland Parkway SW near the intersection with 2nd Ave SW
- W Marginal Way SW near the intersection with SW Front Street



**Each dot on the map represents up to four potholing locations*

What you can expect

- Work hours 8 a.m. to 4 p.m. on business days between May 25 and May 30. Potholing on Highland Park Way SW may require night work due to high traffic volumes in the area.
- Temporary lane closures with flaggers on site to assist vehicle and pedestrian movement. Lane closures will not be concurrent, and each will last up to three hours.
- One drill rig and up to four service vehicles on site.
- Noise and slight vibrations during work hours, including engine noise and periodic hammering.
- Occasional truck traffic accessing the site during work hours.

Please watch for equipment and signs in the area, travel slowly to stay safe and follow direction from flaggers.

Alternative formats available Call 206-477-5371 or TTY:711

Translation services available upon request | Servicios de traducción disponibles | Nêu yêu cầu dịch vụ thông dịch

About the project

Like many cities around the country, older parts of King County's sewer system use the same pipes to carry both sewage and stormwater to a treatment plant. During storms, the pipes can fill with stormwater that runs off roofs, driveways, and streets. When the system is overwhelmed, it is designed to overflow to rivers, lakes, and the Puget Sound. These events are called Combined Sewer Overflows, or CSOs. Even though CSOs help prevent backups into homes and businesses, they pose a risk to public health and the environment.

Over the past several years, King County has been planning to reduce CSOs from the South

Park drainage basin into the Duwamish River to no more than one overflow per year on average. To accomplish this, King County is designing a storage facility near the 1st Avenue bridge. The storage tank will hold stormwater and wastewater during large storms, which will reduce the risk of raw sewage from overflowing into the Duwamish River. After the storm, the water will flow to West Point Treatment Plant for cleaning.

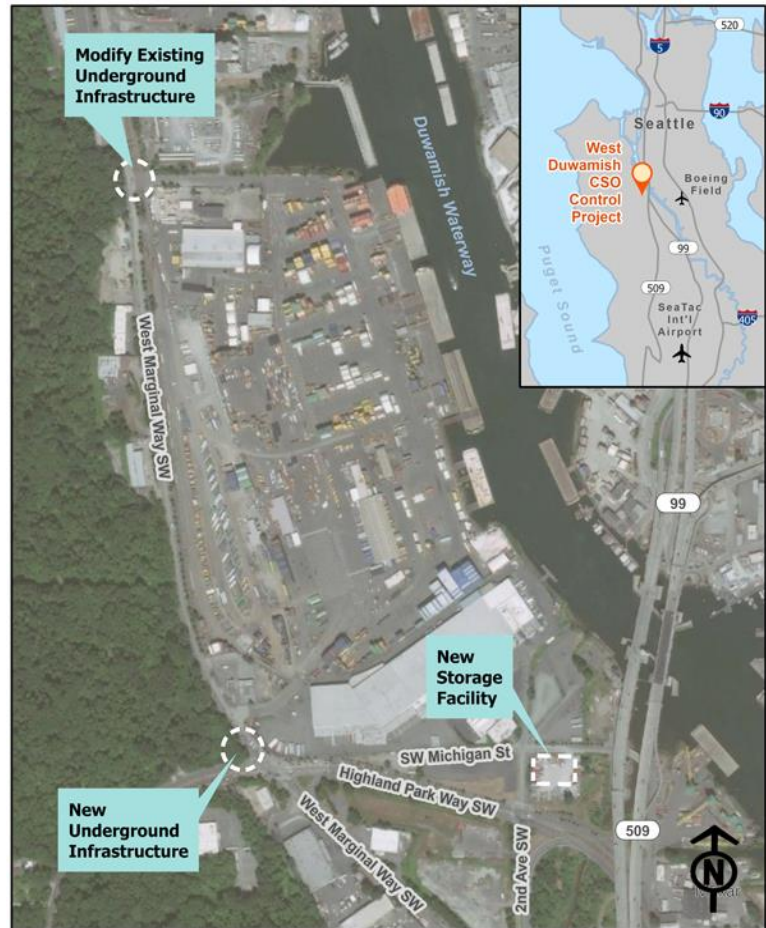
Timeline

The project is in the design phase, with construction estimated to begin in 2025. King County will provide opportunities for the public to provide input as design progresses.

For more information:

Contact Demmelash Adera at 206 263 2340 or email deadera@kingcounty.gov

Visit the project website at kingcounty.gov/westduwamish-cso



El condado de King está construyendo un tanque de almacenamiento cerca de South Park para proteger al río Duwamish durante las grandes tormentas. Para obtener más información, llame al 206-263-2340, deje un mensaje con su número de teléfono e indique su idioma. Se proporcionará un intérprete sin costo.