



**King County**

**Protecting Our Waters**

*Doing our part on rainy days*

## Informational Open House

# Mouth of Duwamish (MOD) CSO Control Program Consulting Opportunities

**July 20, 2022**

An aerial photograph of a waterfront city. In the foreground, a large marina is filled with numerous sailboats docked at piers. Behind the marina, a multi-lane highway bridge spans the water. The middle ground shows a mix of industrial and commercial buildings, including a large warehouse-like structure. In the background, a dense city skyline with various skyscrapers is visible across the water. A semi-transparent green rectangular box is overlaid on the image, containing the word 'WELCOME' in large, white, bold, sans-serif capital letters.

# WELCOME

Stan Hummel

WTD Capital Projects  
Managing Supervisor

# Agenda

- **Background**
- **Program Overview**
- **Procurement Requirements**
- **BDCC-Equity in Contracting**
- **Q&A**





## What is Mouth of Duwamish (MOD) CSO Control Program?

- Anticipated to be one of the largest CSO control projects in WTD's regional treatment and conveyance system
- Control Combined Sewage Overflows (CSO) from Chelan Ave., Hanford #2, Lander St., Kingdome, and King St. (CHLKK) Regulator Stations, which discharge into the West Waterway, East Waterway, and Elliott Bay



## Why is WTD doing this program?

- Control mandated by a 2013 consent decree negotiated with Ecology, EPA, and Department of Justice.
- The 2013 consent decree is a court ordered settlement to complete remaining projects in CSO control program and achieve the objective of each CSO to one event per year.
- In 2019, WTD began negotiations to modify the 2013 consent decree due to significant changed conditions. Negotiations anticipated to result in updates to schedule for completion of required projects.
- Program subject to finalization of consent decree and subject to Executive budget transmittal prior to Council budget appropriation.



## What problem are we trying to solve?

- Control CSOs from Chelan Ave., Hanford #2, Lander St., Kingdome, and King St. Regulator Stations (CHLKK)
- Consider incorporation of SPU CSO basins 99, 107, and 111 into the MOD CSO Control Program
- Reduce discharges from Hanford #2 and Lander St. Regulator Stations into the East Waterway Sediment Operable Unit (Harbor Island Superfund)
- Reduce discharge of untreated CSO and improve water quality in the Mouth of the Duwamish and Elliott Bay





## Annual CSO Volume/Frequency

Location	Average* Annual CSO Discharge Volume (MG/yr)	Average** Annual Events (count)
Chelan Ave.	20.8	5.3
Hanford #2	275.1	16.6
Lander St.	320.4	16.2
Kingdome	27.5	7.7
King St.	14.8	12.5
SPU 99	1.7	2.4
SPU 107	0.9	4.4
SPU 111	0.9	1.3

The five King County CSO outfalls (CHLKK) discharge approximately one half of the average annual CSO discharge volume across King County's entire combined sewer system (39 KC CSO outfalls).

\* Average CSO discharge volume (2008 – 2021)

\*\* 20-year average events (2001 – 2020)







## Potential Solutions for CSO Control

Possible alternatives to control five King County CSOs and additional City of Seattle CSOs in SODO, Harbor Island, Downtown and West Seattle include:

- wet weather treatment station
- storage tanks or tunnels
- separate sewer pipes
- or a combination.

Project needs to be right sized with what we know about climate change and other changes in our region.

*For reference:*

- [King County 2018 CSO Control Program Update](#)
- [King County 2012 Long-term CSO Control Plan Amendment](#)



## Advancing Equity

WTD is committed to increasing access to King County's Determinants of Equity through its capital projects.

The project will oversee and encourage full implementation of an Equity Plan developed and managed in partnership with community representatives.

*For reference:*

[King County Equity and Social Justice Strategic Plan 2016-2022](#)



# 14

### DETERMINANTS OF EQUITY

THE CONDITIONS KING COUNTY HAS IDENTIFIED THAT EACH OF US NEED TO THRIVE



ACCESS TO AFFORDABLE, HEALTHY, LOCAL FOOD



ECONOMIC DEVELOPMENT



ACCESS TO HEALTH AND HUMAN SERVICES



EQUITABLE LAW AND JUSTICE SYSTEM



ACCESS TO PARKS AND NATURAL RESOURCES



EQUITY IN COUNTY PRACTICES



ACCESS TO SAFE AND EFFICIENT TRANSPORTATION



FAMILY WAGE JOBS AND JOB TRAINING



AFFORDABLE, SAFE, QUALITY HOUSING



HEALTHY BUILT AND NATURAL ENVIRONMENTS



COMMUNITY AND PUBLIC SAFETY



QUALITY EDUCATION



EARLY CHILDHOOD DEVELOPMENT



STRONG, VIBRANT NEIGHBORHOODS



## Advancing Equity

This project will serve Black, Indigenous, and people of color (BIPOC). The facility will likely be located in a historically underserved community.

- **How will your team create meaningful work for BIPOC businesses and community members ?**
- **How will your team empower priority populations to evaluate and guide project equity advancement?**

*For reference:*

- [King County Equity and Social Justice Strategic Plan 2016-2022 Community Partnerships, Facility & System Improvement Goal Areas](#)





## Potential Program Scope\*

- Conduct Alternatives Analysis
- Develop Facility Plan
- Finalize Delivery Plan
- Program Scheduling and Estimating
- Community and Equity Plans
- Land Acquisition and ROW Acquisition
- Geotechnical
- Architecture/Landscape
- Environmental (SEPA) and Permitting
- Preliminary and Final Design
- State Project Review Committee Approval
- Alternative Delivery Packages

**\*Final SOW will be developed during future contract negotiations and will reflect selected consultant(s) knowledge and approach to program management, owner advisor services, facility engineering and other relevant aspects of the contract work.**



## Potential Contracts

Program Manager/Owners Advisor (PMOA)

Engineering/Environmental

CM Services

Progressive Design Build

GCCM

Audit Services

# Preliminary Delegation of Scope

PMOA CONTRACT	ENGINEERING/ENVIRONMENTAL CONTRACT(S)	WTD
<ul style="list-style-type: none"> <li>• Program Delivery Strategy</li> <li>• Program Equity Plan</li> <li>• Program Standards/ Best Practices</li> <li>• Schedule/ Estimating Support</li> <li>• Delivery Methodology Support</li> <li>• State Project Review Committee Approval</li> <li>• Support for Future Procurements</li> </ul>	<ul style="list-style-type: none"> <li>• Facility Plan Development</li> <li>• Engineering</li> <li>• Environmental/SEPA/Regulatory Coordination</li> <li>• Permitting Support</li> <li>• Alternatives Analysis</li> <li>• Delivery Packaging Support</li> <li>• Land Acquisition and ROW</li> <li>• Geotechnical</li> <li>• Architecture/Landscape Architecture</li> <li>• Community Outreach Support</li> </ul>	<ul style="list-style-type: none"> <li>• Program Sponsor</li> <li>• Direct Program/ Project Oversight</li> <li>• Coordination with External Stakeholders (SPU)</li> <li>• Governmental Relations</li> <li>• Leverage Internal Expertise (WTD Supporting Program/ Projects)</li> <li>• Procurement Support</li> <li>• Community Outreach</li> <li>• Hydraulic Modeling</li> </ul>

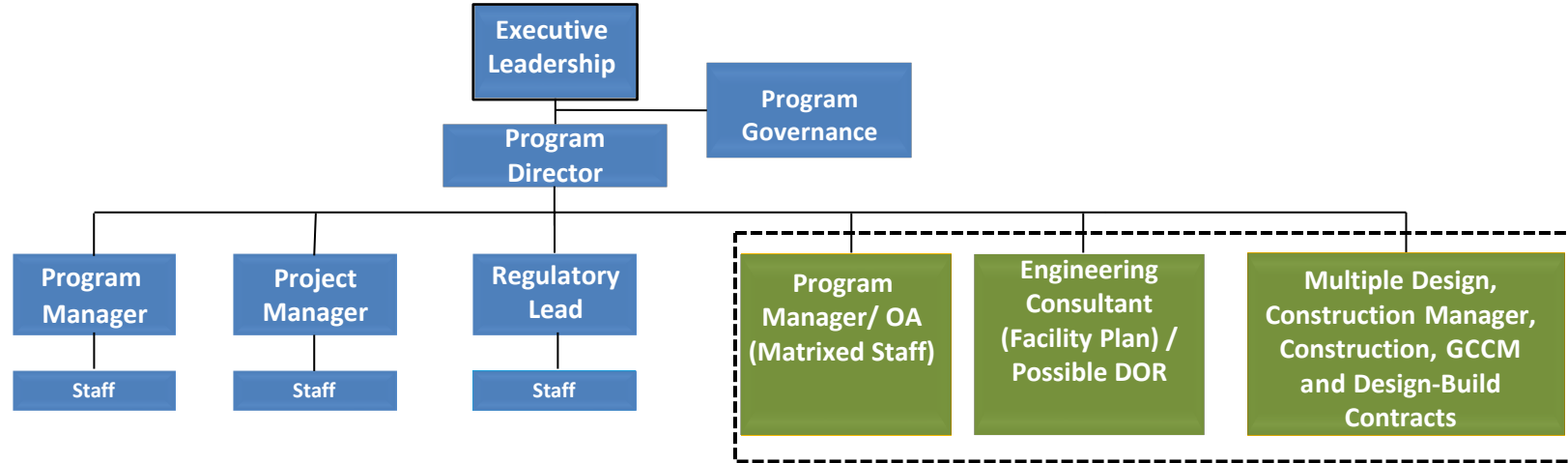




## Why Program Manager/Owners Advisor?

- WTD has historically utilized design-bid-build for its capital projects. WTD last completed alternative delivery in 2011- Brightwater Sitework & Liquids/Outfall (GCCM and DB).
- WTD Capital program projected to grow significantly with several large projects/programs planned over the next 6 years.
- Current design-bid-build delivery method relies heavily on internal staff resources.
- Industry is increasingly using collaborative delivery as preferred method for delivering large projects in public capital programs.

# Team Organization



## Program Level Support Services

Equity Planning	Public Outreach	Legal	Government Relations	Environmental	Regulatory
Permitting	Sighting/ Land Acquisition	Procurement	Geotech	Delivery Strategy	Collaborative Delivery Support
Budgeting	Cost Controls	Estimating	Scheduling	QA/QC	O&M Support
			Stakeholder Coordination		Executive Level Support



## RFP NO. 1: PMOA Services

- Overall Program Management
- Master Program Schedule Development
- Project Delivery Planning Including Assisting King County with Alternative Delivery Contracting
- Independent Cost Estimating; Program Cost Estimating
- Program Equity Planning
- Preparation of bridging documents for future Design-Build Contracts – PMOA excluded from competing for those contracts



## RFP No. 2: Engineering/Environmental Services

- Alternatives Analysis to Determine Best System Alternative
- Siting Evaluation including Land Acquisition
- Environmental Services (SEPA)/Regulatory/Permitting Support
- Geotechnical Services
- Architecture/Landscape
- Preliminary Design Development/Facility Plan Preparation
- Public Involvement/Community Outreach
- Scope includes potential amendment for final design services, contingent on selected delivery methodology. E/E excluded from competing for future progressive design-build work packages.



# Schedule

- Alternatives and siting analysis to determine best system alternative.
- Selected alternative to be documented in Facility Plan submittal to Ecology.
- To avoid delay, consultant procurement to begin before consent decree negotiations finalized.
- Program subject to Consent Decree negotiations and King County Council approval including budget appropriations.



# Project Schedule

	Mouth of Duwamish (MOD) CSO Control
Program Manager Owner Advisor Ad	Q4 2022
Engineering/Environmental Services	Q1 2023
Alternatives Analysis	2023/2024
Initial Design Development	2025
Future PDB or GCCM Procurements	2026





King County

Protecting Our Waters

*Doing our part on rainy days*

# PROCUREMENT

*Strategy and Requirements*



Trisha Roth

Procurement & Payables  
Contract Specialist III



King County

Protecting Our Waters

Doing our part on rainy days

# Register on E-Procurement Portal

King County

1 Company Details 2 Contacts 3 Addresses 4 Business Classifications 5 NAICS Codes 6 Rosters and Certifications 7 Review

Register Supplier: Company Details ⓘ

Please complete all required fields. Select "Next" or "Save for Later" after entering your contact information.

\* Supplier/Company Name  \* Tax Country

\* Tax Organization Type  Taxpayer ID

Supplier Type

Corporate Web Site

\* Required: attach a completed King County Substitute W-9. Find the link in the help bubble. None ⓘ

Additional Information

\* W-9 Attachment Date  UBI Number  WA State Contractor License

Your Contact Information

Enter the contact information for this registration. This contact will be assigned as the default Admin and Bidder for the Supplier.

\* First Name

\* Last Name

\* Email

\* Confirm Email

- All active solicitations will be conducted on the **E-Procurement portal**.
- [Register](#) your firm to gain access to the portal to participate in solicitations.
  - Only 1 company profile allowed; add multiple contacts.
  - **Opt-in to the Small Works & LPW Roster**
  - **Required:** Complete & upload the [W-9 Taxpayer Identification \(IRS W9\)](#) form.
  - [Select all NAICS Codes](#) that apply to your company to ensure you receive invitation to solicitations.
  - Complete all the required fields (\*) & train stops.



King County

Protecting Our Waters

Doing our part on rainy days

All communication must be through the Contract Specialist

# Solicitation Abstract

**King County**

Solicitation Abstracts

Welcome to King County E-Procurement Portal

This page displays solicitations for King County. Clicking on the "Details" of a solicitation below will display a summary of the solicitation.

Suppliers must register with King County as an **E-Procurement Supplier** to gain full access in the supplier portal to download attachments and submit a response to any solicitation. Information on registering with King County as an E-Procurement Supplier, as well as resources to assist with navigating the supplier portal, can be found by following the link below:

<https://kingcounty.gov/procurement/registration>

After registration, the link to the E-Procurement Sign-in page is below:

<https://kingcounty.gov/procurement/supplierportal>

Information such as a list of suppliers that have expressed interest in solicitations, suppliers that have attended pre-bid or pre-proposal meetings, or submittals received by King County on past procurements can be found on the Solicitation Resources Page:

<https://kingcounty.gov/depts/finance-business-operations/procurement/for-business/solicitation-resources.aspx>

Search:

View ▾

Solicitation	Title	Solicitation Type	Status	Posting Date	Open Date	Close Date	Details
KC000021.3	Engineering Services for Cedar Hills Regional Landfill Area 9	A&E Solicitation	Active	1/19/21 02:52:0...	12/18/20 01:26...	1/21/21 12:00:0...	
KC000073	RFP EcoConsumer Outreach and Waste Prevention Program	G&S Solicitation	Active	1/15/21 05:20:1...	1/15/21 05:20:1...	2/9/21 02:00:59...	

Abstract: G&S Solicitation KC000073

Title	RFP EcoConsumer Outreach and Waste Prevention Program	Open Date	1/15/21 05:20:11 PM
Solicitation Type	G&S Solicitation	Close Date	2/9/21 02:00:59 PM
Status	Active	Posting Date	1/16/21
Buyer	Michelle Poste		
Email	Michelle.Poste@kingcounty.gov		
Synopsis	To assist King County Solid Waste Division (SWD) in developing and operating its EcoConsumer Outreach and Waste Prevention Program (EcoConsumer)		

Additional Information

Pre-Bid/Proposal Conference Date	Bid Opening Location	N/A
Second Pre-Bid/Proposal Conference Date	Small Business Requirements Apply?	No
Pre-Bid/Proposal Location	No Pre-Proposal conference	
Last Date for Questions	2/2/21 05:00:00 PM	
Department		
Division		

- View **publicly advertised** solicitations on the [Solicitation Abstract](#) page and create a response by logging in through portal.
- High-level details on the solicitation provided:
  - Solicitation Number
  - Title
  - Type
  - Status
  - Posting, Open & Close Dates
  - Details



King County

Protecting Our Waters

*Doing our part on rainy days*

# BUSINESS DEVELOPMENT & CONTRACT COMPLIANCE

*Equity in Contracting*

Laura Preftes

BDCC  
Contract Specialist III



King County

Protecting Our Waters

Doing our part on rainy days

# Equity in Contracting

## ***EQUITY & SOCIAL JUSTICE (ESJ) GOALS***

*Goals for Certified Minority and Women's Business Enterprises*

*ESJ Innovation Plan with a focus on Outreach, Mentorship,  
Advancing ESJ and Community Partnerships*

*For more information visit [kingcounty.gov/bdccc](https://kingcounty.gov/bdccc)*





## Equity in Contracting – M/WBE Goals

- Goals for Certified Minority and Women's Business Enterprises (M/WBE)
- Proposers provide an approach to maximize M/WBE inclusion and participation
- Proposers provide an approach for distributing meaningful opportunities to M/WBE partners
- M/WBE firms must be certified by the State of Washington, Office of Minority and Women's Business Enterprises ([OMWBE](#))







King County

Protecting Our Waters

*Doing our part on rainy days*

## Equity in Contracting - Mentorship

Proposer's plan, approach, and specific actions to implement a mentor-protégé program for M/WBE firms to increase the participation, capacity, and or business acumen of these firms during implementation of the Scope of Work.

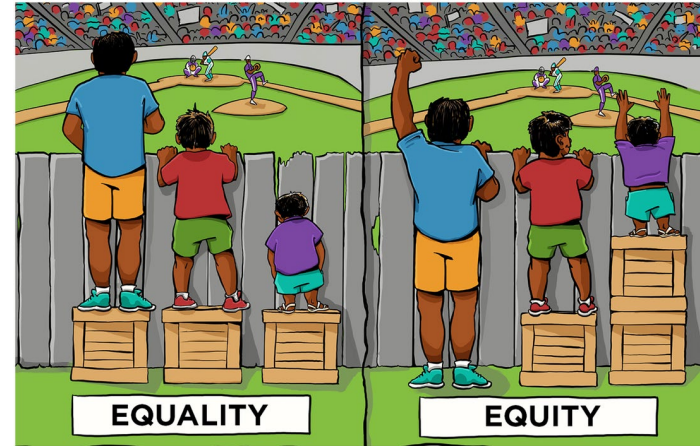




## Equity in Contracting – Advancing ESJ

Proposer's approach to advancing Equity and Social Justice. Example approaches include:

- Cultural competency training for project staff
- Obtaining input from culturally diverse populations
- Integrating the needs of historically disadvantaged and low-income populations
- Other initiatives to achieve outcomes applicable to the [County's ESJ Strategic Plan](#) goals



## Equity in Contracting – Community Partnerships

Proposer's integrated approach to promote equity. Example approaches may include:

- Identification of community partnerships to provide, distribute or communicate information in multiple languages
- Delivery of cultural competency training to staff using community partnerships to develop, deliver and facilitate the curriculum
- Notification of work opportunities to sub consultants and employees using community partnerships





King County

Protecting Our Waters

Doing our part on rainy days

# Equity in Contracting

## *Outreach Opportunities*

[2022 Regional Contracting Forum](#) – September 21, Muckleshoot Auburn Event Center

- [Registration](#) is open
- Sign up for 1:1s coming soon

MOD Prime/Sub Networking Event –  
Details to come





QUESTIONS?





King County

Protecting Our Waters

*Doing our part on rainy days*



## Contact Information

MOD CSO Control Program:

Stan Hummel, Stan.Hummel@kingcounty.gov

**Upcoming contractor opportunities with WTD**

Visit: [WTD Consultant and Contractor Forum](https://kingcounty.gov/depts/dnhr/wtd/capital-projects/consultant-contractor-forum.aspx)

(<https://kingcounty.gov/depts/dnhr/wtd/capital-projects/consultant-contractor-forum.aspx>)



# We want to hear from you!



King County

Protecting Our Waters

*Doing our part on rainy days*

Share with us:  
[Attendee Survey](#)



King County

Department of Natural Resources and Parks  
Wastewater Treatment Division

## WTD Informational Open House for MOD CSO Control Program

Thank you for attending King County's WTD Informational Open House! Please take a few minutes to tell us more about your firm and any feedback you would like to share with us.

1. Name

Enter your answer

2. Company



King County

Protecting Our Waters

*Doing our part on rainy days*



King County

Department of Natural Resources and Parks  
**Wastewater Treatment Division**

**Thank you!**