

HAZARDOUS WASTE DISPOSAL

Products that are hazardous should not go down your sink, toilet or in the trash can. A product is hazardous if the label says: **CAUTION-WARNING-DANGER-POISON**.

Avoid hazardous products. STOP—read the label!

HIGHEST HAZARD
DANGER, POISON —
Avoid these products

MODERATE HAZARD
CAUTION, WARNING

SAFEST
Does not have CAUTION,
WARNING, DANGER, POISON



Paints and solvents are some of the most hazardous substances in your home. Handle them with care and dispose of them properly. If put down the sewer, oil-based paints and solvents have harmful and flammable vapors that can be dangerous for the treatment system and staff.

For a list of safer products, check www.govlink.org/hazwaste/house/disposal.

Questions about products or disposal? Call 206-296-4692 or visit www.govlink.org/hazwaste/house for times and disposal locations in King County.

BRING HOUSEHOLD HAZARDOUS WASTE TO ANY OF THE FOLLOWING SITES FOR FREE DISPOSAL

King County Household Hazardous Waste Facilities

Bellevue-Factoria Drop-Off Service*

No appointment required.
13800 SE 32nd St., Bellevue
Open Tuesday thru Sunday, 9 a.m. to 5 p.m., except holidays

South Seattle*†

No appointment required.
8105 Fifth Ave. South
Open Thursday thru Saturday, 10 a.m. to 4 p.m., except holidays

North Seattle*†

Appointment required.
Open Sunday thru Tuesday, 10 a.m. to 4 p.m.
Call Households Hazards Line
206-296-4692 or 1-888-869-4233; 711 TTY

*Limit 10 fluorescent bulbs and container limit of five gallons with a maximum of 50 gallons total per customer per day.

†Limit 30 gallons of gasoline.

If you have a container that holds more than 5 gallons – call first for disposal permission.

Printed on recycled paper. Please recycle.
Produced by: King County Department of Natural Resources and Parks
File name: 0804CarnSewerManual.indd mdev

THE CANDY CANE-SHAPED AIR VENT IN YOUR YARD IS IMPORTANT!

The air vent, located above ground on your property, is necessary for the overall functioning of the vacuum sewer system. It must be in place, as designed, for your side sewer and the system to work properly.

The air vent has a curved top and is fitted with a screen to prevent rain water or small animals from entering the sewer system. Check your screen quarterly. The air vent protects your house plumbing by providing an adequate supply of air into your side sewer during the vacuum process. **DO NOT CUT, PLUG OR REMOVE IT!**

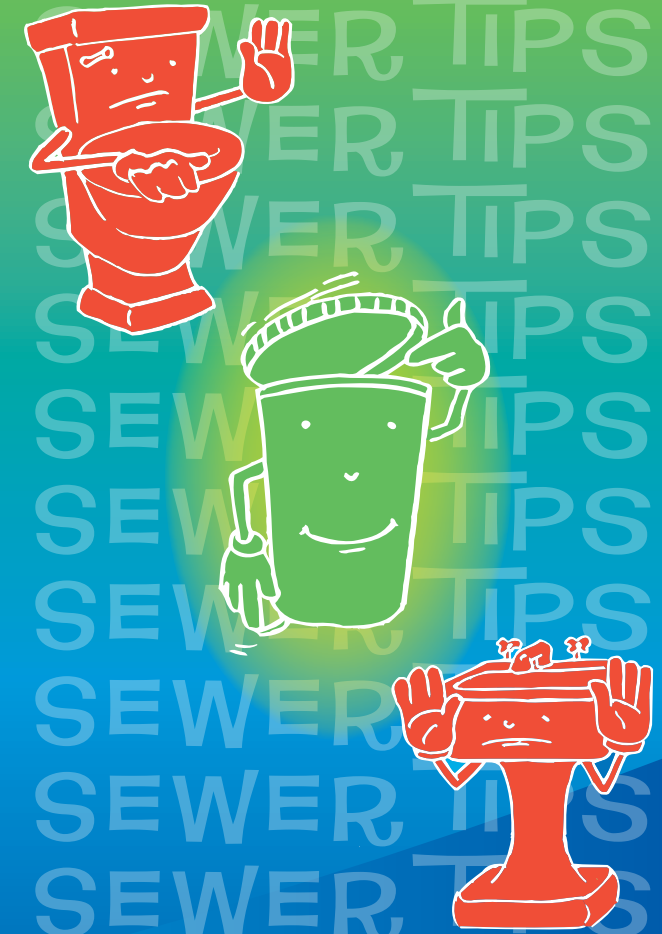
If your air vent is damaged in any way, please repair it in accordance with the City's technical specifications. Any damage that occurs to the City's sewer system as a result of the property owner's failure to properly maintain the side sewer or air vent will be the responsibility of the property owner.



Alternative Formats
206-296-8361 (voice) or 711 (TTY)

CARNATION SEWER SYSTEM OWNER'S MANUAL

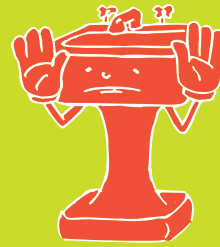
Please take the same care with your treatment system that you did with your septic system.



IN THE KITCHEN: Have a fat-free sewer

Grease will stick to household and sewer pipes. Over time, grease build-up can block pipes and cause sewage backups. Home garbage disposals don't keep grease out of the plumbing system, they only shred solid material into smaller pieces. Additives that claim to dissolve grease may pass it down the line and cause problems in other areas. Follow these steps to keep things moving along.

RECYCLE YOUR FOOD WASTE—DON'T PUT IT DOWN THE DRAIN



The average single-family household throws away about 45 pounds of food scraps and food-soiled paper every month that could be easily composted.



DO scrape grease and food scraps from cooking surfaces into a container and put in the trash or compost them.



DO compost food in your own back yard. <http://www.metrokc.gov/dnrp/swd/garbage-recycling/backyard-composting.asp>



DON'T put grease, fats or oil of any type down your drain or garbage disposal.



DO subscribe to food and yard waste collection from WasteManagement. Items such as vegetable and fruit, plate scrapings, egg shells, coffee grounds and tea bags, paper towels and napkins—even greasy pizza delivery boxes—can all be recycled in your yard waste cart. Check out <http://wmnorthwest.com/carnation/yardwaste.html> for more information.



DO put baskets/strainers in sink drains to catch food scraps and other solids—and then empty them in the trash for disposal.



DON'T put produce stickers down the drain. While small, they don't break down!

For more information about things you can do to protect your environment, call the City of Carnation at 425-333-4192, or King County at 206-296-8361.



Protecting water quality starts with each of us!

King County Wastewater

Treatment Division and the City of Carnation
Protecting public health and the environment

IN THE BATHROOM: your toilet is not a trash can

Flushing the wrong thing down the toilet damages your household plumbing, your environment and your sewer system. Flush only toilet paper. Use the trash can for everything else!



For more information visit: <http://dnr.metrokc.gov/wtd/carnation> or www.ci.carnation.wa.us

ALL THESE ITEMS BELONG IN THE TRASH CAN (AND ANYTHING OVER TWO INCHES IN DIAMETER)



Band-aids & bandage wrappers



Cleaning wipes



Tampons & applicators



Kitty litter



Dental floss & teeth whitening strips



Disposable diapers, nursing pads & baby wipes



Mini & maxi-pads



Cotton balls, swabs & pads



Expired & unused prescription or over-the-counter medications.



Condoms



Facial wipes



Hair

Check out the Medicine Take Back Program at www.product-stewardship.net/productsPharmaceuticalsMedicines.html.

Size matters!
Anything over two inches in diameter will clog the pipes.

