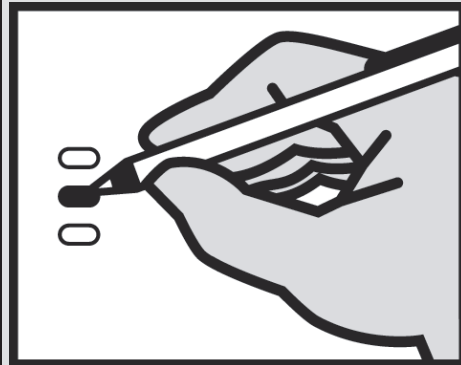


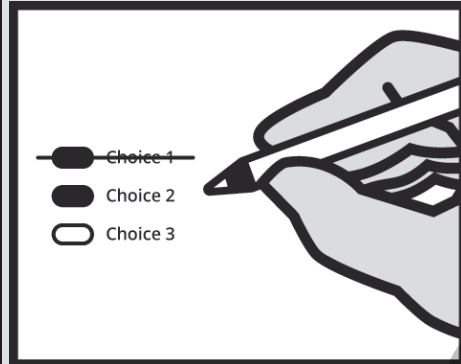
Instructions

How to vote



Completely fill in the oval next to your choice.

How to correct a mistake



To make a correction, draw a line through the entire choice.

You then have the option of making a different choice by completely filling in another oval.

School

**Seattle School District No. 1
 Proposition No. 1
 Replacement for Educational Programs and Operations Levy**

The Board of Directors of Seattle School District No. 1 passed Resolution No. 18/19-2 concerning this proposition to maintain current educational funding. To continue high quality programs that are not state funded, this authorizes the District to levy the following excess taxes replacing an expiring levy on all taxable property within the District:

Collection Years	Estimated Levy Rate/\$1,000 Assessed Value	Levy Amount
2020	\$1.05	\$271,300,000
2021	\$0.96	\$271,700,000
2022	\$0.87	\$272,000,000

as provided in the Resolution, subject to legal limits at time of levy. Should this proposition be approved?

- Yes
- No

**Seattle School District No. 1
 Proposition No. 2
 Capital Levy - \$1.4 Billion**

The Board of Directors of Seattle School District No. 1 requests approval of a capital levy as described in Resolution No. 2018/19-6. The proposition replaces an expiring capital levy and authorizes the levy of excess taxes to fund the Building Excellence Program V for earthquake, safety projects, construction, or renovation at 16 schools; projects for building systems and major maintenance at 72 schools; and technology and other projects throughout the District:

Collection Years	Estimated Levy Rate/\$1,000 Assessed Value	Levy Amount
2020	\$0.90	\$233,333,333
2021	\$0.82	\$233,333,333
2022	\$0.75	\$233,333,333
2023	\$0.68	\$233,333,333
2024	\$0.62	\$233,333,334
2025	\$0.56	\$233,333,334

Should this proposition be approved?

- Yes
- No