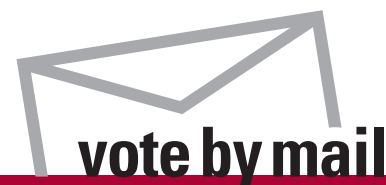


February 9, 2010 Special Election

King County

Official Local Voters' Pamphlet



Published by:



King County
Elections

For more information call 206-296-VOTE (8683) or visit www.kingcounty.gov/elections



King County

Department of Elections

Dear King County Voter:

It's election time again and even though there may be only a few issues to vote on in this election, each one is important. Make sure you read the directions and your ballot options top to bottom, front to back!

There have also been some changes made that may affect the way you return your ballot, beginning with this February special election. As many of you may be aware, King County had to make some hard choices to balance the 2010 operating budget. This included cuts to all departments in services that citizens want and depend on. Elections, like all other departments, was asked to identify services that could be reduced or eliminated without preventing our ability to successfully conduct elections.

As a cost savings measure, Elections has been asked to reduce the number of ballot drop boxes as well as the operational hours of accessible voting centers. We will continue to have two 24-hour ballot drop boxes available to voters who want to return their ballot without postage. (Locations and operating hours are listed on the next page of this pamphlet.)

Although there have been some cuts to services, we can all be proud of the strides made in our performance and the efficiencies achieved by becoming a vote-by-mail county. In last November's general election, there was not a single discrepancy in over 587,000 ballots counted. Conducting elections by mail has also substantially streamlined our election administration and, as a result, the need for so many temporary staff.

As we enter into a new decade, there will be many opportunities as voters for you to help shape it. Remember, every vote makes a difference. I encourage you to study the issues and cast your mail ballot by Tuesday, February 9.

Sincerely,

Sherril Huff
Director
King County Elections

Ballot drop boxes + accessible voting options

Attention: Elections has reduced the number of ballot drop boxes as well as the operational hours of accessible voting centers.

Ballot drop boxes

You can return your voted ballot at one of our drop box locations. Ballot drop boxes will be open on Friday, January 22 and **close at 8 p.m. on Election Day, February 9.**

King County Elections

9010 East Marginal Way S, Tukwila 98108

King County Administration Building

500 4th Ave, Seattle 98104

accessible voting centers

Voters with disabilities can cast a private and independent ballot at the following locations, dates and times.

King County Elections

9010 East Marginal Way S, Tukwila 98108

Weekdays, January 20 - February 8:

8:30 a.m. – 4:30 p.m.

Tuesday, February 9: 7 a.m. – 8 p.m.

Bellevue City Hall

450 110th Avenue NE, Bellevue, 98009

Seattle, Union Station

401 S Jackson St, Seattle, 98104

Monday, February 8: 10 a.m. – 5 p.m.

Tuesday, February 9: 7 a.m. – 8 p.m.

Voter information

Registering to vote is easy

If you meet the following qualifications you can register to vote online, by mail or in person

To register to vote you must be:

- a citizen of the United States;
- a legal resident of Washington State;
- at least 18 years old by election day.

King County votes by mail

If you do not receive your mail ballot or lose your ballot, please notify King County Elections.

Registration deadlines

While you may register to vote at any time, there are registration deadlines prior to each election. You must register by mail or online at least 29 days before an election. If you are a new voter in Washington State, you may register in person at the King County Elections office up to 8 days before an election.

Keep your voter registration current

You can use the online or mail-in voter registration form to let King County Elections know when you move or change your name. You must re-register or transfer your registration at least 29 days before the election to be eligible to vote in your new precinct.

For more information, King County Elections can be reached at the following:

Voter hotline: 206-296-VOTE (8683)
1-800-325-6165
TTY 206-296-0109

Online: www.kingcounty.gov/elections

E-mail: elections@kingcounty.gov

In-person: King County Elections
9010 East Marginal Way S
Tukwila, WA 98108

Mail: King County Elections
919 SW Grady Way
Renton, WA 98057

City of Renton Proposition No. 1

Should the City of Renton be annexed to and be a part of the King County Library District?

YES

NO

Statement in favor

RENTON PUBLIC LIBRARY – Served by KCLS

Vote YES on annexation to King County Library System (KCLS). Renton paid over \$285,000 for residents to use KCLS services in 2009, and this cost will continue to rise as Renton's population grows. Annexation to KCLS will eliminate these cross-use costs.

The Master Plan Study concluded that KCLS can provide library services 6-9% cheaper than a city-owned library. If Proposition 1 fails, library hours and staff will be cut effective March 1.

A "Yes" vote would mean KCLS will immediately upgrade services, technology and resources at the existing locations, including:

- Increased hours, including Sunday
- Additional computers and laptops
- DIRECT access to all of KCLS's materials and online resources
- Tutoring and SAT preparation
- Expanded mobile and outreach services

KCLS includes access to Seattle Public and other libraries.

The present library buildings will remain city property, the Renton community will keep its local library board, "Friends of the Library" and all existing Renton Library jobs will be retained.

Voting YES means Renton will join one of the most successful library systems in the nation. We will save money and get more library services. Vote YES!

Rebuttal of statement in opposition

KCLS is not a part of King County Government.

Vote Yes to avoid costly duplication of services. The city-owned library option in the Master Plan Study would cost \$0.48 per \$1000 vs. \$0.42 for KCLS.

Vote Yes to avoid layoffs and reduced hours at the Renton Libraries. KCLS will retain existing staff. Renton libraries operated by KCLS will retain materials desired by local residents.

KCLS works with local communities to provide modern library services.

Statement submitted by: Peter Hartley, David L. McCammon, and Patricia Johnson.

www.rentonforkclsnow.org

Explanatory statement

If approved by a simple majority of Renton voters, this measure would annex City of Renton residents to the King County Library System (KCLS) effective in January 2011. The City of Renton would no longer operate a library system. KCLS would provide library services to the residents of the City of Renton including increased branch hours, more public computers and different library programs. Renton would provide two replacement library facilities to be paid for at a future date by City of Renton funds. Annexation would mean that City of Renton residents would pay for library services through property taxes levied by KCLS rather than by the current system of a combination of City general fund money and a fee paid by the City to KCLS. KCLS is a separate local government, and not part of King County government, with the sole purpose of providing library services. KCLS is governed by a Board of Trustees appointed by the King County Council. The City of Renton will retain the authority to have its own library board, which will serve in an advisory capacity to the King County Library System.

Statement in opposition

A No vote means you keep access to both library systems and avoid the tax increase associated with a county take-over. King County Library System is a separate taxing district that will add \$0.42 per \$1000 of assessed value to your taxes. The KCLS board knows and admits that library service with KCLS would be more costly to Renton residents. Maintain your access to both library systems and control your taxes by voting No.

A No vote means maintaining local control of our libraries and keeping our materials and library staff in Renton. This means that books and materials will be on the shelf in Renton, not dispersed across the county. Library staff know their patrons and decisions are made by those concerned with Renton, not by bureaucrats managing 40+ sites throughout the county. Please vote No.

For over 100 years Renton Library has been independently serving Renton. Say no to handing over this community treasure. Renton's independent library system was built by generations of residents. Don't pay more to get less of what we already have: a great local library and access to the county-wide system. Let's continue to build our system for Renton. **Vote No on library annexation.**

Rebuttal of statement in favor

Under KCLS, city of Renton will save money, but the individual taxpayer will pay more.

- Without a levy lid lift, KCLS will face cutbacks.
- Under KCLS annexation, Renton Library will be moved and Renton residents will pay for replacement facilities.
- Renton staff and materials will be dispersed throughout the county.

Renton residents have access to KCLS and Seattle libraries. Don't pay additional taxes to lose your independent library. Vote No on library annexation.

Statement submitted by: Bruce Myka, Lynne Shioyama, and Virginia Decker

www.saverentonlibrary.org

King County Rural Library District

Proposition No. 1

The Board of Directors of the King County Rural Library District adopted Resolution No. 2009-11 concerning an increase in the District's regular property tax levy. In order to provide continued funding for the normal operation and maintenance of the King County library system, this proposition would authorize the District to restore regular property tax levy rate to \$0.50 per thousand dollars of assessed value for collection in 2011, and to increase the levy in each year thereafter as allowed by chapter 84.55 RCW. Should this proposition be approved?

YES

NO

Statement in favor

KCLS libraries are busier than ever, but I-747 revenue restrictions will force reductions in library hours, resources and services unless we restore full funding for 2011. One year of revenue restoration will help KCLS maintain quality service.

KCLS helps families raise strong readers

Early literacy programs help families teach babies language skills that last a lifetime.

KCLS helps students succeed

KCLS helps children love learning, and enables parents to guide children to their highest educational goals. KCLS is even more important as school libraries cut services.

KCLS helps job-seekers

In 2009, thousands of residents turned to KCLS for help finding job-related information, resume-writing resources, computer skills classes, small business support, and financial research.

Voting "no" will force cuts in library services

KCLS has maintained quality libraries within a severely reduced budget since 2001 despite a 43% growth in use. Failure to restore the full legal property tax level for 2011 will force reductions in materials, open hours, computers, and maintenance.

One year of restored funding will maintain quality service

Voting **'approved'** restores full library funding for one year. For a \$400,000 home, that's just \$32 more in 2011 for libraries--less than one hardcover book.

Vote **Yes** on Proposition 1!

Rebuttal of statement in opposition

Libraries offer more than entertainment.

More than 1.2 million residents use KCLS' 45 libraries, choosing from 4 million books.

Adults find job leads, resume help and business tools.

Preschoolers build lifelong learning skills.

Students in 18 school districts get homework help.

Seniors stay active and involved in learning.

About \$32 more for one year ensures books, computers and learning tools for all.

KCLS is a solid investment in our future.

Yes on Prop 1.

Statement submitted by: Dean Smith, Rachael Levine, Doris Townsend

Explanatory statement

King County Rural Library District (King County Library System or KCLS) receives 96% of its operating revenue from property taxes. Since 2001, State law has limited growth in property tax revenues to 1% annually without voter approval (a levy lid lift). In 2002, voters approved a one-year levy lid lift for KCLS to restore the full legally authorized rate limitation of 50 cents per \$1,000 of assessed valuation. This temporary restoration sustained operations as planned for eight years, during which library usage increased 43%. Proposition 1 would authorize KCLS to restore its property tax levy rate to 50 cents per \$1,000 of assessed valuation, for collection in 2011, and to use that levy amount as the basis for KCLS's property tax limitations in subsequent years.

Approval of this Proposition would enable KCLS to sustain library service at current levels at all 45 libraries, including programs, building maintenance, computers, new books and other materials. The restored revenue also would enable KCLS to maintain outreach services to elderly and homebound, low-income daycares and community centers.

Rejection of this Proposition would lead to 10-15% budget cuts across the organization beginning in 2011 in order to operate within current revenue restrictions, limiting funding for books, computers and building maintenance. Effects of these cuts may include increased wait times for popular book titles, reduced availability of computers and less frequent maintenance and upkeep of libraries. Library staff and hours of operation will be affected in future years without this short-term restoration of revenue.

Statement in opposition

Public libraries are important – together with education, police and other valuable services.

However, as public schools and government agencies reduce expenses during the worst recession since 1929, library management coldheartedly disregards thousands of unemployed, including families losing homes overburdened already by overassessed property taxes.

This should not surprise anyone.

The state Public Disclosure Commission's Compliance Director documented this same management's unlawful misuse of tax dollars for "communications [that] were not a fair and balanced presentation of the facts. The effort constituted a campaign promoting passage of Proposition 1, in violation of RCW 42.17.130" (www.pdc.wa.gov/archive/compliance/reports/pdf/2005/KingCoLibraryMemo.pdf).

Library Board members disciplined that Machiavellian lawbreaking by raising its CEO's salary to \$160,620.82.

Library officials also negligently refuse to address costly nonessentials.

Indeed, KCLS continues to buy advertising for its "entertainment" diversions, which multiply discipline problems, e.g., children left to play videogames, for hours, abandoned repeatedly at closing time (including by parents gambling at Emerald Downs according to Board discussion on December 15, 2009).

Taxpayers apparently cannot stop public libraries from becoming videogame arcades – disrupting research and reading – but we can decide that financing "entertainment" by raising property taxes on citizens being foreclosed out of their homes is **"An Indecent Proposal"** (KCLS Call Number VT-Fic-I).

Rebuttal of statement in favor

Government revenues are down – along with incomes of many taxpayers already generously supporting libraries with \$173.60 in annual taxes on "average" \$395,000 family homes – so library officials authorize \$1 million for this Special Election's costs to raise library taxes higher repeatedly.

Board Minutes document abuse of taxpayers from failures to save \$500,000 by simply waiting for this year's Primary **because** the CEO insists wastefully expensive Special Elections "turn out a lot of supportive voters" (8/25/2009).

Statement submitted by: Will Knedlik

TruthInTaxation@aol.com

Seattle School District No. 1

Proposition No. 1

Capital Levy

The Board of Directors of Seattle School District No. 1 passed Resolution No. 2009/10-4 concerning this proposition to fund the Buildings, Technology, and Academics III Program. This proposition authorizes the District to levy the following excess taxes, to replace the expiring Buildings, Technology, and Academics II levy, on all taxable property within the District, for construction and modernization of educational facilities throughout the District:

Collection Year	Approximate Levy Rate/\$1,000 Assessed Value	Levy Amount
2011	\$.35	\$45,000,000
2012	\$.33	\$45,000,000
2013	\$.32	\$45,000,000
2014	\$.30	\$45,000,000
2015	\$.29	\$45,000,000
2016	\$.27	\$45,000,000

Should this proposition be approved?

YES

NO

Statement in favor

Vote YES for Seattle Public Schools CAPITAL LEVY Proposition 1

Our students and schools need your help. Proposition 1 renews our commitment to safe and healthy schools by replacing a similar, expiring levy.

Safer Schools Prop 1 ensures children have safe, well-maintained learning environments. It funds critical health and safety improvements such as roofs, seismic improvements, fire suppression and electrical upgrades to make every Seattle school safer.

Better Learning The Capital Levy supports technology improvements to give students the learning tools they need to succeed. In addition, it upgrades worn-out playgrounds and athletic fields.

Greener Schools Prop 1 also funds new green technologies for energy efficiency and other sustainable ways of cutting waste and costs.

Skills Centers A successful YES vote on Prop 1 will open the door for millions of dollars in matching funds for job training and skills centers for students interested in vocational futures.

Proposition 1 is not a new tax. It continues our commitment to safe and healthy schools. **Please vote YES on Proposition 1.**

Rebuttal of statement in opposition

For safe, healthy schools Vote YES for Proposition 1

We AGREE, our students DO need well-maintained schools.

We SUPPORT the Capital Levy because of its prudent investments in our schools:

- * Roof, fire sprinkler and water system repairs
- * Heating, ventilation and electrical renovations
- * Earthquake safety, student health, playground and building repairs
- * Window, siding and green, energy-saving replacements
- * Reopening schools for increased student enrollment

For safe, healthy schools, please vote YES!

Statement submitted by: Phil Brockman, Ramona Hattendorf, Eric Liu
www.SchoolsFirstSeattle.org or (206) 224-3563

Explanatory statement

The Board of Directors of Seattle Public Schools approved Resolution 2009/10-4, requesting voter approval of a capital levy of \$270,000,000 for Buildings, Technology and Academics. The proposed levy will replace an expiring levy. Passage of Proposition No. 1 would allow the levy of property taxes over a six year period to pay for remodeling, construction, modernization and improvement of existing and new facilities, for technology improvements and for equipment and training to meet the current and future educational program needs of its students. Projects funded by this levy would include building reinvestments such as energy efficiency upgrades, green school initiatives, roof replacements, mechanical systems, life safety, improvements to drinking water quality, acquisition of technology and technical infrastructure, remodeling and modernization of science facilities and athletic fields. The total amounts to be collected for each year will be \$45,000,000 and estimated levy rates each year per \$1,000 of assessed value will be \$0.35 for 2011 collections, \$0.33 for 2012 collections, \$0.32 for 2013 collections, \$0.30 for 2014 collections, \$0.29 for 2015 collections and \$0.27 for 2016 collections.

Statement in opposition

Safe buildings are a fundamental need in education. Seattle Public Schools currently has a \$500M maintenance backlog.

- SPS spends less than they did in 1979 on basic maintenance but has more buildings. Simply put, you the taxpayer will pay MORE later because the district does not do enough basic maintenance *now*. This levy does NOT address the maintenance issue in any significant way. In fact, the first \$50M - *nearly 20% of the entire levy* - is to go to reopen 5 *closed* buildings.
- Almost half of the SPS buildings are over 50 years old and are not being properly maintained. There are new buildings that SPS spent over \$700M to build and yet it does not properly maintain that investment.
- **Seattle Times 12/7/1995** - "*He (Superintendent John Stanford) acknowledged, though, that if given a choice he would have kept the maintenance levy in the package and deferred the \$75 million technology plan.*" If Stanford was worried about maintenance in 1995, why aren't we in 2010?

Giving the district more money while they are not maintaining our buildings only enables bad practices. Demand accountability of our tax dollars and proper upkeep for our school buildings.

Rebuttal of statement in favor

- There is a \$500M maintenance backlog. This levy will barely make a dent.
- This levy has climbed from \$178M in 2004 to \$270M in 2010.
- This levy has only athletic fields in it, not new playgrounds.
- The district is NOT keeping our schools safe and healthy and they want taxpayers to pay more for repairs because the district didn't take care of them earlier.

Demand accountability – if not now, when?

Statement submitted by: Melissa Westbrook

Seattle School District No. 1 Proposition No. 2 Operations Levy

The Board of Directors of Seattle School District No. 1 passed Resolution No. 2009/10-3 concerning this proposition to maintain current educational program funding levels. This proposition authorizes the District to levy the following excess taxes, in place of an expiring levy, on all taxable property within the District, to support the District's educational programs and operations:

<u>Collection Year</u>	<u>Approximate Levy Rate/\$1,000 Assessed Value</u>	<u>Levy Amount</u>
2011	\$1.07	\$139,500,000
2012	\$1.06	\$145,100,000
2013	\$1.11	\$158,100,000

Should this proposition be approved?

YES

NO

Statement in favor

SUPPORT our KIDS and SCHOOLS!

Vote YES for Proposition 2, Seattle Schools Operating Levy

Now more than ever we need to renew the Operating Levy. Simply put, without your continued support it is unclear how we could sustain our schools.

The Seattle Public Schools Operating Levy:

- Funds teachers, books** and day-to-day operations for ALL public schools and EVERY school kid in Seattle.
- Keeps class sizes lower** by preventing teacher layoffs and paying for teachers, classroom aides and librarians in EVERY elementary, middle and high school.
- Provides 23 percent** of the Seattle Public Schools total basic education and operation budget.
- Ensures continuing support** (NOT a new tax) for EVERY school, student and family in EVERY part of Seattle.

I'm a Seattle school teacher. I know that without the Operating Levy we couldn't do our job, let alone keep our schools open for the students and families who need and depend on us.

That's why I'm asking you now for your vote. **Vote for our children and our future.**

PS - Please vote! And vote YES for Proposition 2.

Rebuttal of statement in opposition

Proposition 2, our Operations Levy, funds important education programs and services not funded by the State.

It funds **23% of the Seattle School District's annual operating budget**. Without this support, we will be unable to meet the educational needs of our children.

Neighborhood schools will be strengthened and schools reopened to accommodate new students.

Your YES vote will benefit **every** child, in **every** classroom, in **every** community in Seattle with smaller classes and better instruction.

Statement submitted by: Marianne Bratsanos, Ramona Hattendorf and Eric Liu www.SchoolsFirst Seattle.org or (206) 224-3563

Explanatory statement

The Board of Directors of Seattle Public Schools approved Resolution 2009/10-3, requesting voter approval of an operations levy. The proposed levy will replace an expiring levy. Passage of Proposition No. 2 would allow the levy of property taxes over a three year period to pay for educational programs and operations support costs of Seattle Public Schools as follows: \$139.5 million in property taxes within Seattle Public Schools District for collection in 2011, the levy of \$145.1 million in taxes for collection in 2012 and the levy of \$158.1 million in taxes for collection in 2013. If authorized by the voters and based on current assessed valuation information, estimated levy rates per \$1,000 of assessed value would be \$1.07 (2011 collection), \$1.06 (2012 collection) and \$1.11 (2013 collection).

Statement in opposition

Vote NO on segregation, vote NO on Proposition Two, the \$442.7 million Operations levy.

Citizens of a democracy on occasion have the firm but lucky opportunity and duty to refuse funding for especially harmful government actions. Threatening to segregate a full one-quarter of Seattle's public schools is a call to exercise this duty.

The District's recently-adopted attendance areas will take away school choice, split communities, and segregate schools. It is wrong to red-line families out of their schools. Send a message – Don't fund these plans: **Vote NO.**

According to the District's own data, the new student assignment plan will cause or aggravate racial imbalance at 23 schools, per Washington Administrative Code 392-342-025(3), including the proportion of White enrollment (up) at Ballard 72%; Bryant 78%; Hamilton 71%; Roosevelt 74%; West Woodland 83%; and (down) at Gatzert 8%; West Seattle Elementary 16%. [District "Data Book for Recommended Attendance Area Boundaries", November 4, 2009]

Botched school closures (some now hurriedly being reversed) destructively tore apart school communities. The District's plan to further reduce school choice threatens similar harm citywide.

The District is not making good educational choices with these funds.

Please vote NO.

Rebuttal of statement in favor

Mandatory assignment is replacing freedom-of-choice neighborhood schools.

We're voting NO to segregation of schools, NO to loss of school choice, and NO to misuse of funds. Please join us.

Joy Anderson, Charita Dumas, Shelley Williams (Cooper parents still fighting for our school). Elaine Schmidt, former Seattle Public School parent and PTSA officer. Robert Stephens, Jr., AAA Elders Council (Closing schools to build new schools? Superintendent's bonus? Now?).

Please vote NO.

Statement submitted by: Chris Jackins (206) 682-2450

Tukwila School District No. 406 Proposition No. 1 Capital Levy for Instructional Technology and School Improvements

The Board of Directors of Tukwila School District No. 406 adopted Resolution No. 773, concerning a proposition to finance instructional technology and school improvements. This proposition would authorize the District to acquire and install instructional technology equipment, infrastructure and systems to improve student learning; make health, safety and energy efficiency improvements to existing school facilities; and levy the following excess taxes, on all taxable property within the District:

<u>Collection Year</u>	<u>Approximate Levy Rate/\$1,000 Assessed Value</u>	<u>Amount</u>
2011	\$0.44	\$1,350,000
2012	\$0.42	\$1,350,000
2013	\$0.27	\$896,250
2014	\$0.26	\$896,250
2015	\$0.25	\$896,250
2016	\$0.24	\$896,250

all as provided in Resolution No. 773. Should this proposition be approved?

- YES
 NO

Statement in favor

Tukwila is the only school district in the Greater Seattle metropolitan area that does not fund technology through a voter-approved bond or levy. The state does not pay for technology, and other sources are not keeping up with district technology needs. Many students don't have a computer at home. An independent study found that the school district is in need of many improvements.

As a result, Tukwila students are at a disadvantage when they graduate and go on to further education or out to compete for jobs.

The technology levy on the Feb. 9 ballot will begin to close that gap.

Tech levy money will be used to put new computers and technology into the classrooms of all of the schools in the district, as well as make infrastructure improvements that will allow higher-speed access and wireless connections. A small amount will go toward necessary repairs to the school buildings to protect the investment voters have already made.

Vote YES on the Tukwila schools technology levy on the Feb. 9 ballot.

Honorary campaign committee: Jim Haggerton (chair), Zack Hudgins, Rhonda Berry, Peggy McCarthy, Mike West, Fowzi Mohamed, Joe Sabey, Louise H. Strander.

Endorsements: Tukwila City Council, SWKC Chamber of Commerce.

Statement submitted by: Ron Lamb, Colleen Richards and Kate Kruller

Explanatory statement

Passage of Proposition 1 would authorize the Tukwila School District to levy annually for six years excess property taxes to pay costs for instructional technology and school improvements. The taxes collected by this levy will be deposited in the District's Capital Projects Fund and used to pay costs to: acquire and install instructional technology infrastructure and equipment to improve student learning throughout existing school facilities; and carry out other capital projects.

The proposed six-year capital levy would authorize the collection of taxes to provide \$1,350,000 in 2011, \$1,350,000 in 2012, \$896,250 in 2013, \$896,250 in 2014, \$896,250 in 2015 and \$896,250 in 2016. The tax levy rate required to produce these levy amounts is estimated to be \$0.44 per \$1,000 of assessed value in 2011, \$0.42 per \$1,000 of assessed value in 2012, \$0.27 per \$1,000 of assessed value in 2013, \$0.26 per \$1,000 in 2014, \$0.25 per \$1,000 of assessed value in 2015, and \$0.24 per \$1,000 of assessed value in 2016. The tax rate of approximately \$0.44 per \$1,000 of assessed value projected for the first year of collection in 2011 would equate to \$130.95 per year (or \$10.91 per month) for a \$300,000 home. Rates will decline each year thereafter.

Exemptions from taxes may be available to homeowners who are 61 or older, or disabled, and who meet certain income requirements. For more information, call the King County Department of Assessments 206.296.3920.

Statement in opposition

No statement submitted.

Statements in favor of and in opposition to a ballot measure are submitted by committees appointed by the jurisdiction. No persons came forward to serve on the committee and to write a statement in opposition. If you would like to be involved with a committee in the future please contact the jurisdiction.

Reading your voters' pamphlet

Why are only some measures in the voters' pamphlet?

For a special election, jurisdictions are required to submit a resolution requesting that King County Elections publish a voters' pamphlet. Jurisdictions are not required to participate in the voters' pamphlet.

Why are there measures on my ballot that are not in my voters' pamphlet?

Your ballot is correct. The measures on your ballot are the measures for which you are eligible to vote and reflect the districts in which you reside. Not all jurisdictions chose to participate in the voters' pamphlet.

You can find all the measures for which you are eligible to vote by using the online voter guide at www.kingcounty.gov/elections.

Why are there measures in the voters' pamphlet that are not on my ballot?

Your ballot is correct. The measures on your ballot are the measures for which you are eligible to vote and reflect the districts in which you reside.

Voter pamphlets are distributed to households

within certain zip codes, other districts participating in the election may fall within the same zip code. For example, two school districts can share the same zip code but you only reside in one school district.

What is an explanatory statement?

An explanatory statement is prepared by each district's attorney stating the effect of the ballot measure if passed into law.

How are committees in favor of or in opposition to a measure formed?

Districts choosing to participate in a voters' pamphlet are responsible for appointing committee members who agree to write statements.

The statements are a way to persuade voters to vote for or against the measure.

King County Elections is not responsible for the content of the statements.

Your personal voter guide

The screenshot shows a web form titled "Your Voter Guide". At the top, it says "Find your registration status and view your sample ballot". Below this, there are two input fields for "First name" and "Last name". Underneath, there is a "Date of birth (MM/DD/YYYY)" field. At the bottom left is a "Submit" button, and at the bottom right is a link that says "Search by address".

www.kingcounty.gov/elections

- View your voter registration information.
- See which districts you are eligible to vote in for this election.
- Read the ballot measures you are eligible to vote on for this election.
- Read the explanatory statement and statements in favor of and in oppositions to a measure for those jurisdictions that chose to participate in the voters' pamphlet.
- Read the full text of a ballot measure resolution submitted by the jurisdiction.

King County votes by mail

All registered voters eligible for this special election will soon receive a ballot in the mail.

Follow these simple steps to vote by mail

1. Vote. Following the instructions on your ballot, make your selections using a blue or black pen.
2. Place your ballot in the security envelope and seal it to ensure your ballot remains secret.
3. Place the sealed security envelope into the mailing envelope. Read and sign the oath on the return envelope, then seal the envelope. Your signature is as important as your vote; make sure you take the time to sign the return envelope.
4. Return your voted ballot. All voted ballots must be received at a designated drop box by 8 p.m. on election night or be postmarked by the U.S. Postal Service on or before election day.

Tracking your ballot online

Voters who are eligible to vote in an election can now track their ballot at several points. Visit the ballot tracker link at www.kingcounty.gov/elections.

Track your ballot
packet



Mail ballot tracking

- Track point #1: Your ballot packet was assembled and delivered to the U.S.P.S. by Elections.
- Track point #2: King County received your returned ballot packet.
- Track point #3: Your signature was verified and you will be credited with voting.

Reading your ballot

Washington voters may have the opportunity to vote in three special elections this year, typically on levies or bond measures.

Even though there may be only a few issues to vote on in this election, each one is important.

Make sure you read the directions and your ballot options top to bottom, front to back.

For more information

For more information, King County Elections can be reached at the following:

Voter hotline: 206-296-VOTE (8683)
1-800-325-6165
TTY 206-296-0109

Online: www.kingcounty.gov/elections

E-mail: elections@kingcounty.gov

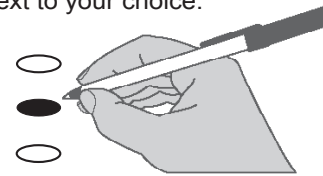
In-person: King County Elections
9010 East Marginal Way S
Tukwila, WA 98108

Mail: King County Elections
919 SW Grady Way
Renton, WA 98057

Instructions

Making selections

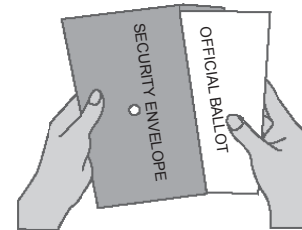
Use a dark pen to completely fill in the oval next to your choice.



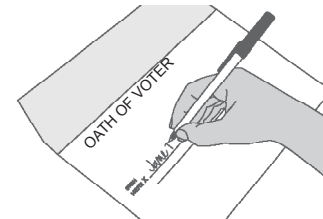
! Do not cut, tear or damage ballot.

Returning the ballot

Insert completed ballot into security envelope.



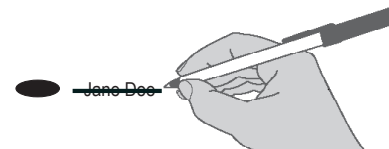
Insert security envelope containing completed ballot into return envelope. Sign the oath on the return envelope.



Optional

Making corrections

To make a correction, draw a line through the selection. You then have the option of making another choice.



NONPROFIT ORG.
U.S. POSTAGE
PAID
SEATTLE, WA
PERMIT NO. 1455

ECRWSS

Residential Customer

98138 98168 98178 98188

Edition 3

King County produces all election materials in both English and Chinese. If you, or someone you know, needs language assistance, call King County Elections and request a ballot and voting material in Chinese.

為符合聯邦法律，此資料有中文版本。