

# **RESTORATIVE JUSTICE**

**Marcus Stubblefield - Systems Integration  
Coordinator, King County Executive**

**Polly Davis – Assistant Program Manager,  
King County Office of Alternative Dispute  
Resolution**

# Why Transformative/Restorative Justice

- King County is moving ahead in using Restorative Justice principles and practices in various areas (schools, community and criminal justice) as a way for youth reflect on their behavior, build and mend relationships, and connect accountability to their actions.
- Restorative Mediation Pilot – King County Juvenile Court

# Opportunities

Restorative Transformative/Justice is being used:

- In school settings as peer mediation and circle procedures
- Within justice settings as Restorative Mediation and Circle processes
- In the employment and labor arena when people are reintegrated into the workforce after investigations
- Within the community as peace circles to discuss issues such as the Youth and Family Justice Center
- Reentry Circles

“True injustice is paying more than once for each mistake.”

Miguel Ruiz

(What is true justice?)

# The Philosophy of Transformative / Restorative Justice

Comes from indigenous cultures around the world.

Community is at the center – Communities define their own practices

An intentional way of talking, thinking, acting and reacting.

# Menu of some Restorative Processes

- Restorative Conference
- Circles (peacemaking, restorative, etc.)
- Family Group Conferencing/Family Group Decision Making
- Mediation
- Informal Restorative Practices



Peacemaking Circle  
(from Restorative Justice Oakland Youth)



The talking piece.  
(from Safe Space, Chicago)

Meaningful Objects (in center or as talking piece)





In Colorado Public Schools



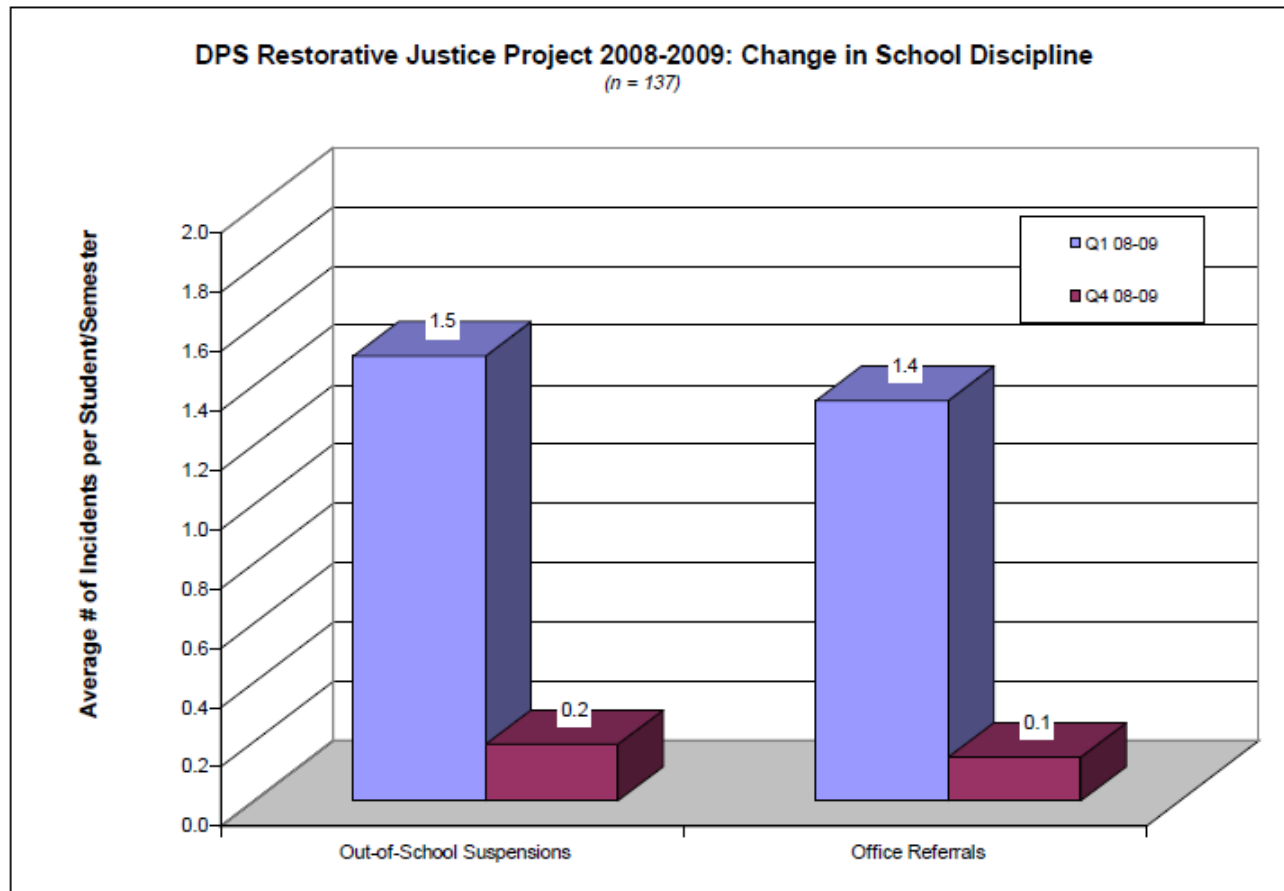
Circle Process San Quentin Prison



Insight Prison Project – San Quentin, CA

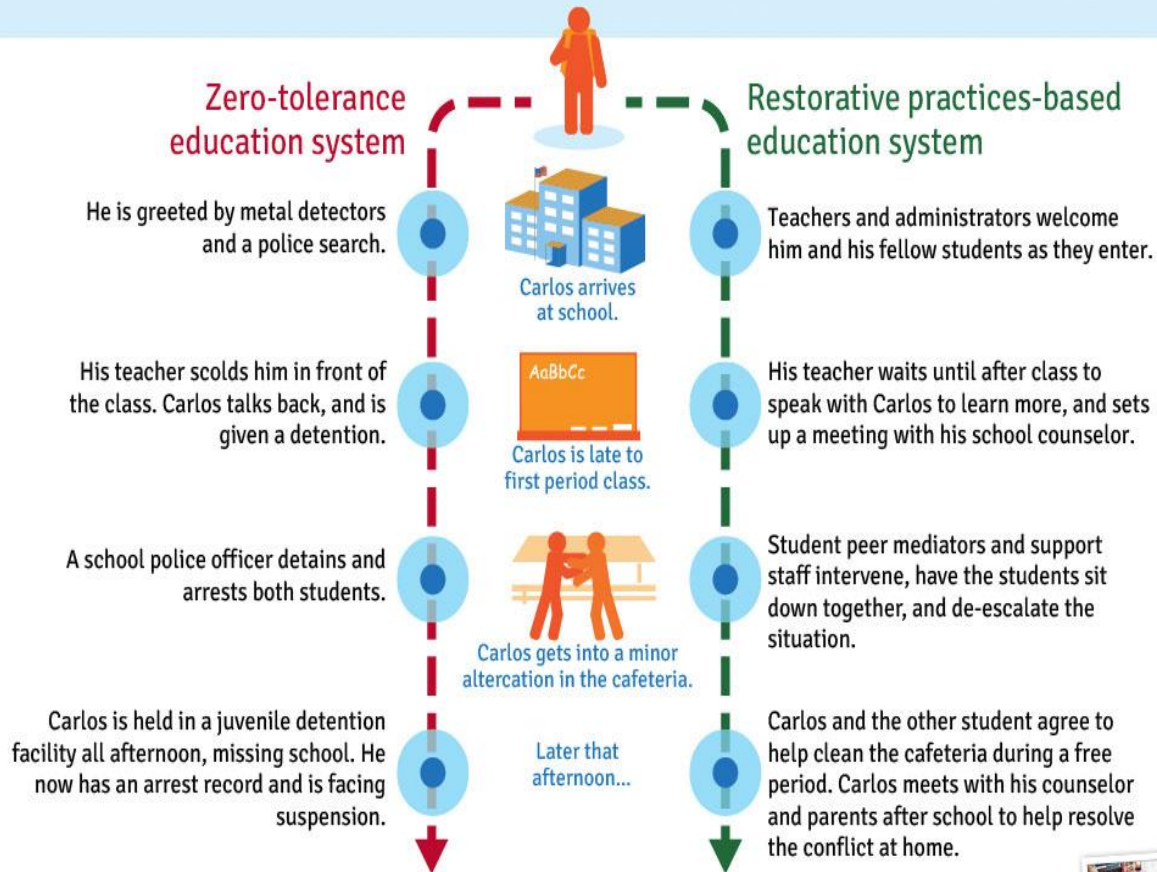
# Impact in Denver Public Schools, Colorado

Chart 5. DPS RJ Project: Improvements in School Behavior and Discipline 2008-2009



# A Tale of Two Schools

Carlos had a heated argument with his parents before leaving for school, so he's running late.  
Let's see the difference that restorative policies and practices can make.



Learn more about restorative practices:  
[www.otlcampaign.org/restorative-practices](http://www.otlcampaign.org/restorative-practices)



# Washington Appleseed Report

## SEATTLE SCHOOL DISTRICT HIGHLIGHTS FROM 2013-2013 PRELIMINARY DISCIPLINE DATA

### SCHOOL DISTRICT SNAPSHOT - DISCIPLINE BASICS

**4,339**  
DISCIPLINARY  
INCIDENTS\*

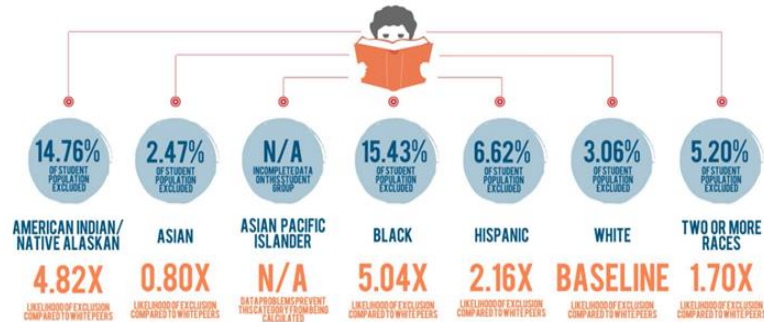
**2,976**  
INDIVIDUAL STUDENTS  
DISCIPLINED

**22,141**  
DAYS OF SCHOOL  
MISSED

**5.88%**  
PERCENT OF THE STUDENT  
BODY THAT EXPERIENCED AN  
EXCLUSION

**1.46**  
REPEAT EXCLUSION  
RATE†

### DISCIPLINE DEMOGRAPHICS



### STUDENTS WITH SPECIAL NEEDS



1. Disciplinary incidents are primarily comprised of short-term suspensions, long-term suspensions, and expulsions. However, this number also includes a small number of additional discipline types, such as Interim Alternative Education Setting and "Other".

2. This figure does not include days missed due to expulsions. Most school districts did not track this specific information for expulsions during the 2012-2013 school year.

3. Students who are suspended or expelled are likely to experience these exclusions more than once. The repeat exclusion rate represents the average number of times disciplined students experience exclusion and can be used to help assess effectiveness of discipline interventions in deterring student behavior.

ALL ANALYSIS COMPLETED BY WASHINGTON APPLESEED. FOR ADDITIONAL INFORMATION, VISIT [WWW.WAAPLESEED.ORG](http://WWW.WAAPLESEED.ORG) OR EMAIL [KATIE@WAAPLESEED.ORG](mailto:KATIE@WAAPLESEED.ORG).



# What Can We Do?

- Talk to our colleagues, internal and external partners about Transformative / Restorative Justice
- Research it through articles, books, videos on the web. [www.rjoyoakland.org](http://www.rjoyoakland.org) so that we can become trailblazers for it in our communities.
- Experiment with it amongst our circles of friends, in our organizations and institutions
- Resource Transformative / Restorative Justice Projects
- Contact School Principals and PTSAs and let them know that “Peacemaking Circles” and other forms of Restorative Justice can slow and stop the School-to-Prison pipeline and help students succeed.



restorative  
healing  
justice  
reconciliation  
relationships  
peace  
offenders  
redemption  
victims  
advocate  
retributive  
forgiveness  
support  
responsibility  
zehr  
closure  
communities  
proportion  
mediation  
reintegrate

# Role Play Scenario