



King County

Department of Transportation
Road Services Division

Transportation Needs Report 2016

Change Report

**Proposed Changes from the 2012 Transportation Needs
Report**

King County Comprehensive Plan, Public Review Draft
November 6, 2015

Chapter 1: Planning Context and Introduction

What Is the Transportation Needs Report and How Is It Used?

The Transportation Needs Report (TNR) is a long-term, comprehensive list of improvements to the roads, bridges and related infrastructure located in unincorporated King County. It includes consideration of significant projects in adjacent cities, counties, and on state highways as they relate to the overall functioning of the transportation system. The transportation needs outlined in the TNR include those that are currently known as well as those that are forecast, due to regionally-adopted targets for growth and development. For the most part, King County Road Services' engineers and transportation planning staff identify project needs based on infrastructure condition, technical assessments, and community input; others are developed based on traffic model data provided by the Puget Sound Regional Council.

The TNR is a functional plan of the *King County Comprehensive Plan*. Together with the King County Department of Transportation, Road Services Division (Roads) Six-Year Capital Improvement Program (CIP) and the biennial operating budget, it fulfills the requirement of growth management legislation (RCW 36.70A.070) as the transportation capital facilities plan element of the King County Comprehensive Plan.

How does this TNR comply with the law?

1. It is based on the land use element of the comprehensive plan.
2. The list of transportation needs and recommended improvements for capacity projects was developed using travel demand forecasts that are based on the regionally-adopted growth targets.
3. It includes a financial analysis that reflects the most recent land use changes, project amendments, costs, and financial revenue assumptions.
4. It documents intergovernmental coordination, with particular attention to potential impacts on adjacent jurisdictions.
5. It includes non-motorized needs (bicycle and pedestrian).

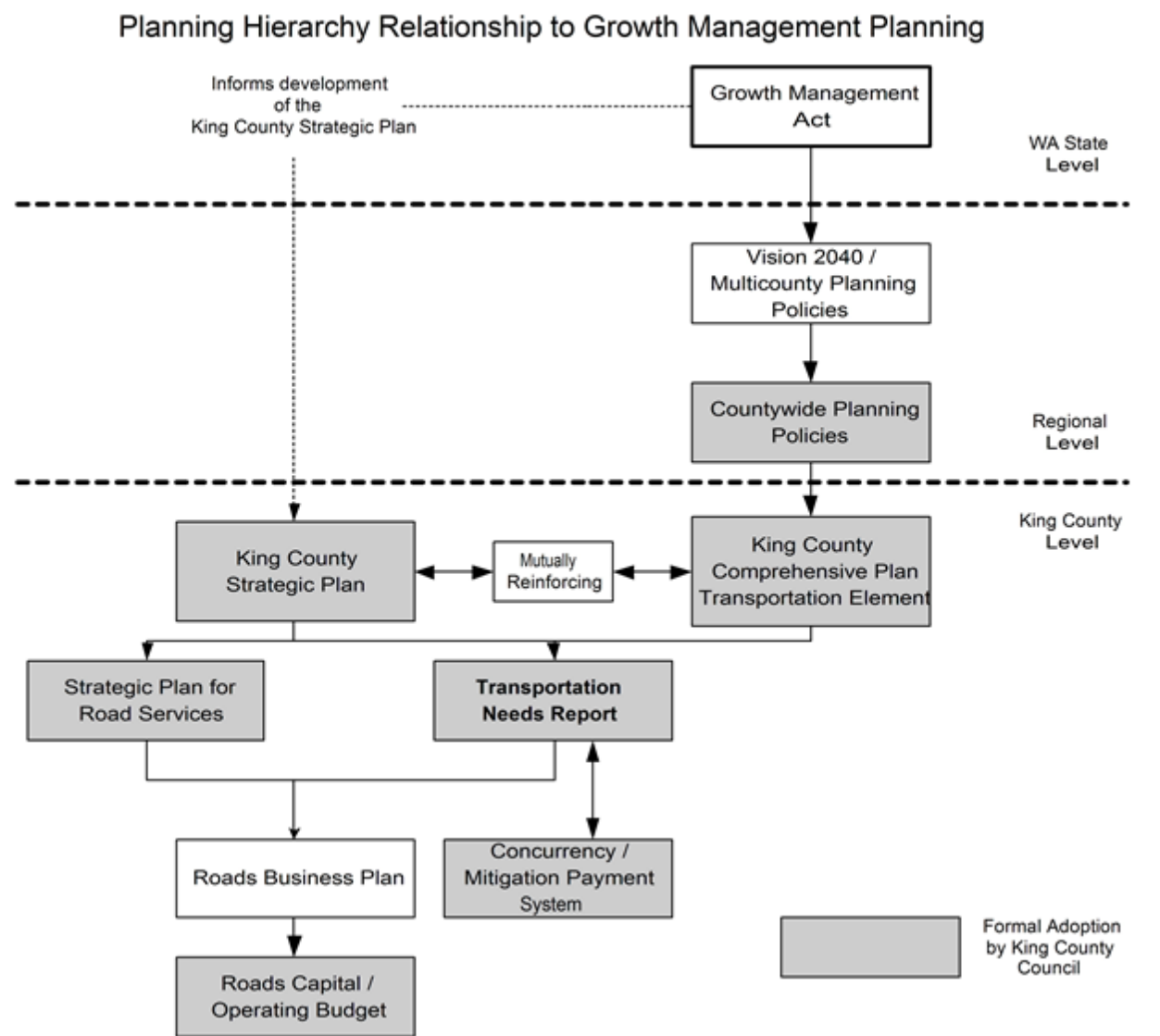
Relationship to King County Comprehensive Plan: A primary purpose of the TNR is to fulfill specific requirements of state growth management legislation for comprehensive planning. King County's TNR fulfills these requirements as outlined in state legislation (RCW 36.70A.070 (6)) are:

- Specific actions and requirements for bringing into compliance locally-owned transportation facilities or services that are below the Comprehensive Plan established level of service standard;

November 6, 2015

- Forecasts of traffic of at least ten years based on the adopted growth targets and land use plan to provide information on the location, timing, and capacity needs of future growth;
- Identification of state and local system needs to meet current and future demands;
- An analysis of funding capability to judge needs against probable funding resources;
- A multiyear financing plan based on the needs identified.

The schedule for updating the TNR corresponds to major updates of the *Comprehensive Plan*, which occurs every four years. If circumstances warrant, interim updates may be developed and transmitted with the annual comprehensive plan technical amendments.



November 6, 2015

Rural Regional Corridors

Rural Regional Corridors are recognized in the King County Comprehensive Plan as segments of certain arterials that pass through rural lands to primarily connect urban areas. This type of roadway plays a key regional mobility role in the county's transportation system. While additional capacity is generally prohibited by county policy on arterial roads in the rural area, a limited exception is made for Rural Regional Corridors. These corridors may receive capacity improvements if the increased capacity is designed to serve mobility and safety needs of the urban population while discouraging inappropriate development in the surrounding Rural Area or natural resource lands.

Rural Regional Corridors must be classified as Principal Arterials and carry high traffic volumes, defined as a minimum of 15,000 Average Daily Trips. They also have at least half of their PM Peak trips (the evening commute) traveling to cities or other counties. They connect one urban area to another, or to a highway of statewide significance that provides such connection, by traversing the rural area.

Based on the criteria in the Comprehensive Plan, the following King County unincorporated area roadways currently qualify as Rural Regional Corridors:

	Woodinville Duvall Road	Novelty Hill Road	Issaquah Hobart Road	Avondale Road
Limits	Woodinville city limits to Duvall city limits	Redmond city limits to W. Snoq. Valley Road	Issaquah city limits to SR-18	NE 116 th to Woodinville-Duvall Road
Functional Class	Principal Arterial	Principal Arterial	Principal Arterial	Principal Arterial
Average Daily Trips (ADT)	20,000	20,0000	18,000	16,000

Transportation Planning and Funding:

The TNR evaluates the difference between identified transportation needs and future revenues for King County. This analysis augments recent work undertaken by Roads to assess the County's ability to maintain the condition of its roadway assets given declining revenues. Projections illustrate that Roads' revenues will not keep pace with maintenance and preservation needs for King County's system given declining federal gas tax revenues and insufficient local property tax and other state revenues.

Most of the federal funding for transportation to the region is allocated via the Puget Sound Regional Council (PSRC) which is the Municipal Planning Organization for King, Snohomish, Pierce and Kitsap Counties. PSRC developed grant criteria focuses on capacity and mobility projects primarily in identified urban centers. Upon completion of the few remaining annexations of urban areas into cities, King County Road's service area will be the rural area. Given the significant decline in revenues, the division is focused on core life safety, regulatory compliance and the maintenance and preservation of existing infrastructure which leaves no funding to add capacity to King County's unincorporated road system. Over the past two funding cycles, King County Roads has been unsuccessful in receiving funding for rural projects in countywide competitions. Rural projects do not compete well against urban projects located

November 6, 2015

in and around PSRC-identified centers. The majority of federal funding allocated to the region is allocated to urban projects that serve centers, fulfilling Growth Management Act goals. The PSRC does allocate funds exclusive to the rural area for rural roadway projects, but the amount is a little over \$3 million every two years. By comparison, the total amount of federal funds awarded to all of the jurisdictions in King County amounts to between \$50-55 million, every two years. Given these criteria and funding limitations, the county expects revenue from federal grant funds will continue to decline.

Historically, 50+ miles were overlaid annually to preserve roads near the lowest lifecycle cost. Based on current funding levels, after the 2015-2016 biennium, overlay funding will need to be funded primarily by grant funds. In the past two grant cycles (2013 and 2016), King County received funding to overlay eight miles of road in unincorporated King County.

The 16 billion, 2015 state transportation package included close to \$1M per year for unincorporated King County roads. Additional funds allocated to the State Transportation Improvement Board (TIB) and the County Road Administration Board (CRAB) for transportation projects are not projected to generate additional revenues due to the allocation methods and grant criteria that govern awards by these agencies. CRAB funding for counties is constrained by Washington Administrative Code that limits allocations based on lane miles as opposed to use.

Based on revenue projections, King County Roads does not have the funds to address the majority of the projects contained in the TNR. When capital funds are available, they will be directed to safety, regulatory and preservation projects consistent with Roads Strategic Plan and Line of Business Plan.

Coordination: The TNR helps to coordinate transportation improvements connecting King County with other jurisdictions including the Washington State Department of Transportation (WSDOT), adjacent cities, and counties. The Puget Sound Regional Council model incorporates the location and type of capacity projects anticipated by other agencies. The model helps King County understand how the overall transportation system will function in the future, indicating where unincorporated capacity improvements may be needed. By clearly showing the scope, location and cost of unincorporated road system projects, the TNR provides other jurisdictions with information to use in appropriately coordinating connecting systems.

Annexations: Cities considering annexing portions of unincorporated King County can refer to the TNR for identified road improvements that their city may need to address in the future.

Development Review: The TNR serves as a source of information in the review of proposed land developments and in determining appropriate mitigation measures required as a condition of new development approval. The County's Mitigation Payment System (MPS) uses the TNR to

November 6, 2015

help identify growth-related projects for the impact fee system, however given the lack of funding for capacity improvements; the MPS system is undergoing a major overhaul.

Road Vacation: Property owners can petition King County to have portions of the County's unused road rights-of-way sold to them if the property is not needed for current or future transportation purposes. The TNR is used to identify future projects on the road system and is one tool in the road vacation process.

How is the TNR put together?

The development of the TNR is part of a comprehensive planning process guided by state growth management legislation. This process links the guidance of the King County comprehensive plan and the *Strategic Plan for Road Services* with the development of the TNR, the Roads Six-Year CIP, and the Roads biennial budget.

Roads' Strategic Plan focuses on the critical funding problem coupled with a backlog of road system maintenance and preservation needs. While the Road Services Division recognizes that it may not be able to fully accomplish all of the goals and strategies suggested in the strategic plan, the plan prioritizes work that meets the most critical needs within available funding and resources. It places high priority on immediate operational safety, regulatory compliance (clean water activities), and the maintenance and preservation of infrastructure. The goals identified in the strategic plan are as follows (in order of priority):

The Strategic Plan for Road Services articulates the division's mission and vision. It focused direction for an approximately ten year time frame by aligning employees, services, and programs with the overarching goals of King County. The plan informs decisions by the King County Executive and Metropolitan King County Council on matters of policy, operations, and budget. SPRS provides a framework to manage the division's programs and services.

Priority	Description
1	Prevent and respond to immediate operational life safety and property damage hazards.
2	Meet regulatory requirements and standards in cooperation with regulatory agencies.
3	Maintain and preserve the existing roadway facilities network.
4	Enhance mobility (movement of people and goods) by facilitating more efficient use of the existing road system.
5	Address roadway capacity when necessary to support adopted growth targets.

Roadway Prioritization:

A key component identified in the strategic plan was the establishment of a service strategy. The plan creates a triaged approach toward maintaining and preserving infrastructure. According to the plan, the most-used arterials would receive the highest level of maintenance and preservation, storm response and snow and ice removal, while the lowest-priority roads could receive less service. Core Safety and regulatory compliance are the county's highest priorities and are accomplished regardless of the priority tier of the roadway.

The tiers are types of roads defined using objective criteria.. Roads are categorized according to volume of use by motorists, safety requirements, detour length, and whether the road is considered sole-access, a lifeline route or important for buses. More information on the road tier system can be found by visiting:

<http://www.kingcounty.gov/transportation/kcdot/Roads/NewServiceLevels.aspx>

The tier information establishes the criticality of the road to the operation of the network. Particularly given limited resources, the strategic plan directs that the most critical roads are prioritized for funding and inclusion in Roads' Capital Improvement Program.

Road Services Service Levels for Unincorporated Roads

Tier 1

Heavily traveled; connect large communities, major services, and critical infrastructure.

- Will receive the highest level of storm, maintenance/preservation response, including the first roads to receive snow removal.
- Users should expect good road and bridge condition and well-maintained drainage.

Tier 2

Highly used local roads; serve local communities and large residential areas.

- Users can expect a lower level of maintenance/preservation, storm and snow response. Generally preservation efforts will be more reactive, prioritized based on level of risk and availability of funding

Tier 3

Highly used local roads that serve local communities and large residential areas.

- Will receive little to no storm and snow response, especially during significant storms. Maintenance and preservation are provided to slow deterioration.
- Users should expect to see wear-and-tear to roadways, possible load limits, lower posted speed limits, and long-term partial closures.

Tier 4

Local residential dead-end roads with no other outlet.

- Will receive virtually no storm and snow response. Maintenance is limited to activities that preserve access.
- Users should expect to see a number of one-lane roads depending on the level of deterioration and availability of funding.

Tier 5 –

Local residential roads that have alternative routes available for travel in case of road closures.

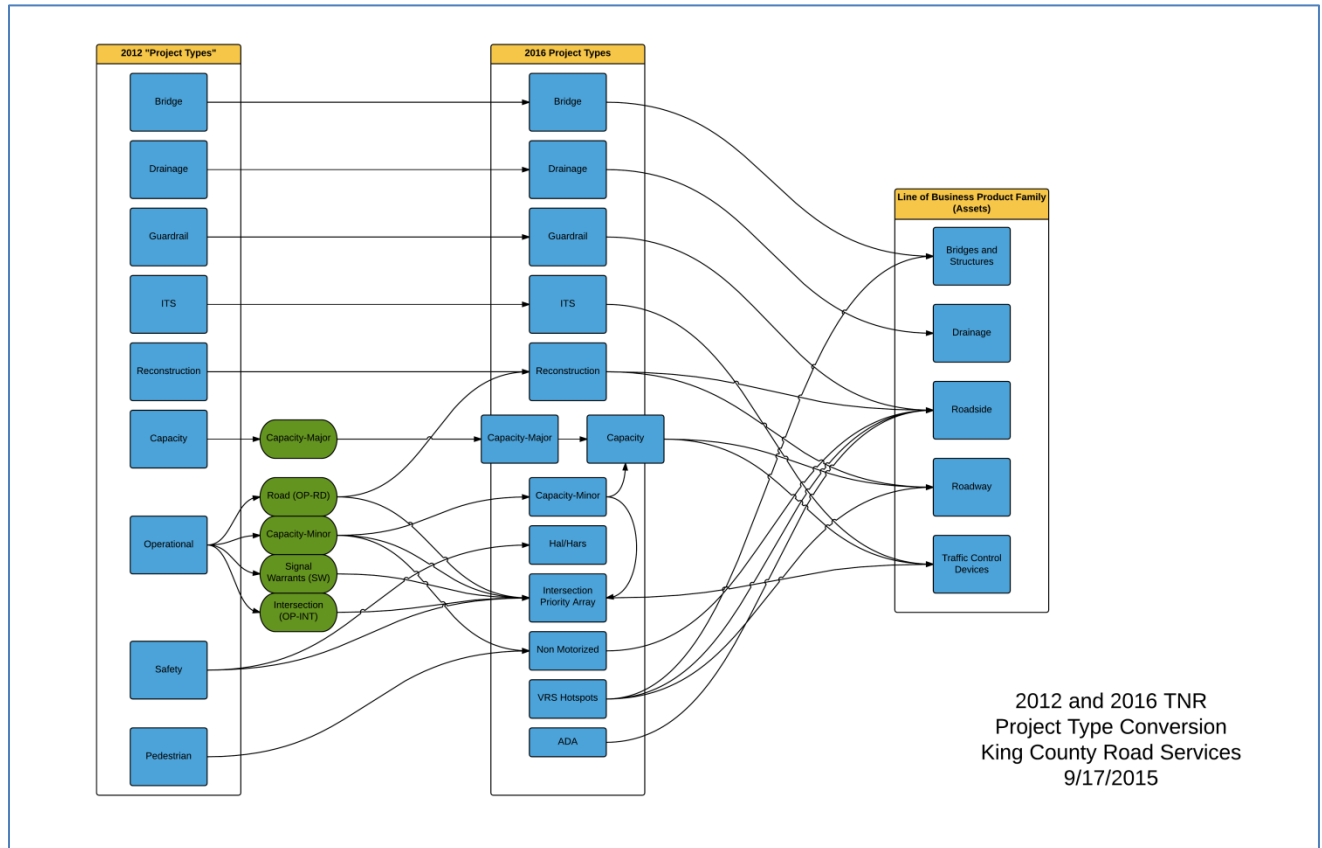
- Will receive virtually no storm and snow response. Maintenance is limited and based on factors such as life safety and risk, resulting in a growing number of deteriorating roads.
- Users can expect to see some closures, longer detours and difficulty accessing property.

November 6, 2015

How Has the 2016 Transportation Needs Report Changed?

Organizing assets by Road Services Line of Business Plan product families:

Previous versions of the TNR organized projects into a series of project types. This version aligns the projects into the five product families identified by the Road Services Division 2015-2016 Line of Business Plan: Roadway, Roadside, Bridges and Structures, Traffic Control Devices and Drainage. This graphic illustrates the migration of projects from previous project types to the Business Plan product families into which the projects in this TNR have been organized.



Including maintenance – programmatic/operating expenditures:

Road Services has developed various programs to respond to the emergent and routine needs of its assets. Descriptions of these programmatic maintenance and operations activities have been added to this version of the TNR to illustrate work being done by the agency, outside of capital projects that is funded by the operating budget.

Safety Projects:

Road Services analyzes accident data to determine the location of high accident locations. Once locations have been identified, projects are then designed to remedy any safety problems where possible. In 2015, a High Accident Location and Road Segment Analysis was done that identified locations with high accident rates (number of accidents/average daily traffic). Accident rate is being considered in identifying the location of safety projects eligible for federal funding, but proposal projects

November 6, 2015

to address the safety problems will not be completed until spring 2016. The priority process for safety projects is discussed further in Chapter Two of this document.

Capital Project Completions:

Capital projects completed since the adoption of the 2012 Transportation Needs Report were deleted from the needs list.

Annexations:

Cities continue to annex portions of unincorporated King County. When annexed areas include TNR project locations, the TNR project is either removed from the Transportation Needs Report or the project is shortened to only include that portion in unincorporated areas

Street Lighting:

In 2014, King County conducted a study on all street lighting owned and operated by King County Roads in unincorporated King County, called the LED Street Light Replacement Study. As engineers conducted the study they documented locations in the County Road System with turn lanes that do not comply with Section 5.05 (Street Illumination) of the King County Road Standards. Projects were added to the TNR to address these turn lane needs.

Signal Warrant Priority Array:

The latest analysis of intersections was completed in April, 2015. Intersections with at least one traffic warrant for a signal were added to the TNR. Locations which previously met, but no longer meet the Manual on Uniform Traffic Control Devices (MUTCD) warrants for signals were deleted. In particular, locations that no longer met the four MUTCD volume warrants were removed. When the highest priority locations receive funding, they will be evaluated to consider a solution that may result in either the installation of traffic signals or the construction of roundabouts.

Non-motorized Projects:

For this TNR update, non-motorized projects were re-evaluated based on the Comprehensive Plan policy guidance and assessment of current conditions. Road Services staff reviewed each project and considered factors including potential non-motorized travel destinations, traffic volumes and speeds, existing shoulder widths, and proximity of a school or other community gathering place. Road staff also researched resident requests for sidewalk locations and, where appropriate, included those projects in this edition of the TNR. In response to Council direction for the creation of a Sub Area Plan, the Skyway/West Hill community produced a list of eight non-motorized capital projects that meet county criteria and have therefore been included in this TNR.

Drainage Projects:

Drainage projects have been divided into three primary categories: 1) Large-scale preservation projects (previously included in the TNR); 2) Small-scale routine maintenance; and, 3) Small-scale drainage preservation projects. Two of the three categories of projects have been added to the 2016 TNR. Routine drainage maintenance needs are captured by description in Chapter Two.

November 6, 2015

Roads has embarked on an asset management program identified in the strategic plan that seeks “to make the most cost-effective operating and capital investments—from maintenance through preservation and replacement—at whatever funding level is available.” Drainage needs are identified in conjunction with other roadway assets. The first step in developing an inventory of drainage needs is to assess the condition of the infrastructure. In 2015, a pilot project was launched to develop a methodology for screening and scoring the condition of the pipes, vaults and ditches that make up part of the drainage infrastructure in the right-of-way. As a result, additional drainage needs will be identified for future editions of the TNR.

King County Road Services: Transportation Needs Report 2016 Project List - Change Report
Public Review Draft, November 6th, 2016

Project Number	Project Location	Project Scope	Product Family	Category	Est. Cost	New Project?
Map Area: Carnation (14)						
Corridor: NE Ames Lake Rd						
OP-RD-4	NE Ames Lake Rd: From Union Hill Rd to State Route 202	Realign and widen lanes	Traffic control devices	Intersection priority array	\$ 9,470,000	
Corridor: NE Tolt Hill Rd						
OP-RD-37	NE Tolt Hill Rd: From Tolt Hill Bridge to 500 feet west of State Route 203	Reconstruct roadway	Roadway	Reconstruction	\$ 1,690,000	
RC-32	Tolt Hill Rd from Tolt Hill Bridge to State Route 203	Armor shoulders to reduce road washouts during floods	Roadside	VRS hotspot	\$ 130,000	
Corridor: West Snoqualmie Valley Rd NE						
RC-15-1	West Snoqualmie Valley Rd NE: From NE 80th St to Ames Lake Carnation Rd NE	Reconstruct roadway	Roadway	Reconstruction	\$ 9,560,000	
Corridor: Misc.						
BR-2133A	Sikes Lake Trestle: 284th Ave NE at Sikes Lake, about 0.5 mile east of State Route 202	Replace bridge	Bridges and structures	Bridge	\$ 9,540,000	
BR-228F	312 Ave SE Bridge: West Snoqualmie River Rd at a drainage ditch, about 0.2 mile north of SE 24th St	Replace bridge	Bridges and structures	Bridge	\$ 1,294,000	
BR-257Z	Horseshoe Lake Creek Bridge: 310th Ave NE at Horseshoe Lake Creek, about 0.2 mile north of NE Carnation Farm Rd	Replace bridge	Bridges and structures	Bridge	\$ 2,180,000	
BR-916A	West Snoqualmie River Road Bridge: West Snoqualmie River Road over a slough to the Snoqualmie River, about 0.8 mile south of NE Tolt Rd	Replace bridge	Bridges and structures	Bridge	\$ 1,570,000	
DR-4	NE 106th St & 314th Ave NE	Replace failing culvert	Drainage	Drainage	\$ 530,000	
GR-115	East Ames Lake Dr NE: From W Ames Lake Dr NE to W Ames Lake Dr NE	Construct guardrail	Roadside	Guardrail	\$ 20,000	
GR-15-10	NE Tolt River Rd: From Carnation City Limits to NE 80th St	Construct guardrail	Roadside	Guardrail	\$ 200,000	YES
GR-15-18	SE 24th St / Lake Langlois Rd: From State Route 203 to end of road	Construct guardrail	Roadside	Guardrail	\$ 40,000	YES
GR-15-30	310th Ave NE/NE 60th St: From NE Carnation Farm Rd to State Route 203	Construct guardrail	Roadside	Guardrail	\$ 70,000	YES
GR-15-37	NE 100th St: From W Snoqualmie Valley Rd to 284th Ave NE	Construct guardrail	Roadside	Guardrail	\$ 570,000	YES
GR-80	West Snoqualmie River Rd SE: From SE 24th St to Tolt Hill Rd	Construct guardrail	Roadside	Guardrail	\$ 100,000	
ITS-25	W Snoqualmie River Rd SE: From SE 24th St to Tolt Hill Rd and State Route 203	Install cameras, vehicle detection, and pavement condition sensors (focus- inform public of pavement conditions)	Traffic control devices	ITS	\$ 490,000	
RC-18	West Snoqualmie River Rd NE: From NE Tolt Hill Rd to SE 24th St	Armor shoulders to reduce road washouts during floods	Roadside	VRS hotspot	\$ 370,000	
RC-34	284th Ave NE: From NE 100 St to NE Carnation Farm Rd	Armor shoulders to reduce road washouts during floods	Roadside	VRS hotspot	\$ 200,000	
RC-36	NE 80th St: From West Snoqualmie Valley Rd to Ames Lake-Carnation Rd	Armor shoulders to reduce road washouts during floods	Roadside	VRS hotspot	\$ 1,490,000	
RC-38	NE 100 St: From West Snoqualmie Valley Rd to 284 Ave NE	Armor shoulders to reduce road washouts during floods	Roadside	VRS hotspot	\$ 670,000	

King County Road Services: Transportation Needs Report 2016 Project List - Change Report
Public Review Draft, November 6th, 2016

Project Number	Project Location	Project Scope	Product Family	Category	Est. Cost	New Project?
Map Area: Covington/Black Diamond (10)						
Corridor: 148th Ave SE						
BR-3108	Soos Creek Bridge: 148th Ave SE at Soos Creek, about 0.2 mile north of SE 240th	Replace bridge	Bridges and structures	Bridge	\$ 2,440,000	
SW-20	148th Ave SE & SE 224th St	Construct roundabout and modify approach grades	Traffic control devices	Intersection priority array	\$ 2,670,000	
Corridor: Kent Black Diamond Rd SE						
BR-3086OX	Berrydale OX Bridge: Kent Black Diamond Rd SE over the railroad, at SE 291st St	Replace bridge	Bridges and structures	Bridge	\$ 10,000,000	
DR-15-17	Kent Black Diamond Rd SE & SE 292nd St at Jenkins Creek	Replace undersized culvert	Drainage	Drainage	\$ 1,100,000	
Corridor: SE 216th St						
OP-INT-95	SE 216th Way & Dorre Don Way	Construct turn lanes	Traffic control devices	Intersection priority array	\$ 360,000	
Corridor: SE 216th Way						
RC-129	SE 216th Way: From State Route 169 to 244th Ave SE	Reconstruct roadway 1.13 miles	Roadway	Reconstruction	\$ 2,190,000	
Corridor: SE 240th St						
DR-10	SE 240th St and 172nd Ave SE at Little Soos Creek	Replace undersized culvert with a bridge structure	Drainage	Drainage	\$ 1,630,000	
NM-4041	SE 240th St: From 156th Ave SE to 172nd Ave SE	Widen walkway	Roadside	Non motorized	\$ 30,000	
NM-5068	SE 240th St: From 138th Ave SE to 148th Ave SE	Provide nonmotorized facility	Roadside	Non motorized	\$ 690,000	
NM-5069	SE 240th St: From 164th Ave SE to 180th Ave SE	Provide nonmotorized facility	Roadside	Non motorized	\$ 690,000	
Corridor: SE Auburn Black Diamond Rd						
RC-139	SE Auburn Black Diamond Rd: From SE Lake Holm Rd to 148th Ave SE	Reconstruct roadway 2.18 miles	Roadway	Reconstruction	\$ 4,680,000	
Corridor: SE Covington-Sawyer Rd						
OP-RD-41	SE Covington-Sawyer Rd: From Thomas Rd to 216th Ave SE	Realign roadway	Traffic control devices	Intersection priority array	\$ 9,470,000	
RC-6	SE Covington-Sawyer Rd: From Covington C/L to 216th Ave SE	Road rehabilitation (pavement treatment)	Roadway	Reconstruction	\$ 1,660,000	
Corridor: SE Petrovitsky Rd						
IPA-26	SE Petrovitsky Rd & Sweeney Rd SE	Construct traffic signal with turn lanes	Traffic control devices	Intersection priority array	\$ 850,000	YES
SW-13	SE Petrovitsky Rd & Sweeney Rd SE	Construct roundabout or north and east turn lanes	Traffic control devices	Intersection priority array	\$ 1,600,000	

King County Road Services: Transportation Needs Report 2016 Project List - Change Report
Public Review Draft, November 6th, 2016

Project Number	Project Location	Project Scope	Product Family	Category	Est. Cost	New Project?
Corridor: Misc.						
BR-3097	Dorre Don Way Bridge: Upper Dorre Don Way SE at a drainage ditch, north of SE 231st St	Replace bridge	Bridges and structures	Bridge	\$ 1,294,000	
BR-3109	Soos Creek Bridge: SE 224th St at Soos Creek, about 0.3 mile east of 132nd Ave SE	Replace bridge	Bridges and structures	Bridge	\$ 1,990,000	
BR-3109A	Soos Creek Bridge: SE 216th St at Big Soos Creek, about 0.3 mile east of 132nd Ave SE	Replace bridge	Bridges and structures	Bridge	\$ 2,360,000	
DR-9	164th Ave SE & SE 225th St	Replace failing culvert	Drainage	Drainage	\$ 1,050,000	
GR-15-38	184th Ave SE/Peter Grubb Rd: From SE Lake Youngs Rd to SE 224th St	Construct guardrail	Roadside	Guardrail	\$ 80,000	YES
GR-88	156th Ave SE: From SE 240th St to SE 251st St/Covington City Limits	Construct guardrail	Roadside	Guardrail	\$ 220,000	
IPA-33	164th Pl SE & SE Covington Sawyer Rd	Construct turn lane & traffic signal	Traffic control devices	Intersection priority array	\$ 1,640,000	YES
SW-56	164th Ave SE & SE 240th St	Construct roundabout	Traffic control devices	Intersection priority array	\$ 1,390,000	
NM-0202	195th Ave SE: From Lake Morton Dr SE to SE 320th St	Construct asphalt shoulder (west side)	Roadside	Non motorized	\$ 90,000	
NM-4033	164th Ave SE: From SE 224th St to SE 240th St	Widen pathway and improve lighting	Roadside	Non motorized	\$ 100,000	
NM-5034	168th Ave SE: From Kent-Black Diamond Rd to Auburn-Black Diamond Rd	Provide nonmotorized facility	Roadside	Non motorized	\$ 830,000	
NM-5050	195th Ave SE: From SE 320th St & East Lake Morton Dr SE	Provide nonmotorized facility	Roadside	Non motorized	\$ 1,150,000	
NM-9980	168th Way SE & Covington Creek	Widen bridge and construct sidewalk (east side)	Roadside	Non motorized	\$ 60,000	

King County Road Services: Transportation Needs Report 2016 Project List - Change Report
Public Review Draft, November 6th, 2016

Project Number	Project Location	Project Scope	Product Family	Category	Est. Cost	New Project?
Map Area: Cumberland (18)						
Corridor: SE 400th Way						
NM-5010	SE 400th Way: From SE 400th St to SE 392nd St	Reconstruct roadway 2.18 miles	Roadway	Reconstruction	\$ 1,910,000	
Corridor: SE Green River Headworks Rd						
OP-INT-72	Stampede Pass Rail & Greenriver Headworks Rd	Reconstruct intersection with signal improvements	Traffic control devices	Intersection priority array	\$ 90,000	
Corridor: Veazie-Cumberland Rd SE						
DR-15-11	284th Ave SE/Veazie Cumberland Rd & North Fork Newaukum Creek	Replace failing culvert	Drainage	Drainage	\$ 780,000	YES
NM-5007	Veazie-Cumberland Rd SE, From SE 386th St to SE 416th St	Provide nonmotorized facility	Roadside	Non motorized	\$ 1,410,000	
Corridor: Misc.						
BR-3035A	Coal Creek Bridge: SE Lake Walker Rd at Coal Creek, about 1.5 mile southeast of Veazie-Cumberland Rd SE	Replace bridge	Bridges and structures	Bridge	\$ 3,210,000	
GR-15-32	292nd Ave SE/SE 416th St: From SE 392nd St to 284th Ave SE	Construct guardrail	Roadside	Guardrail	\$ 570,000	YES
GR-15-33	278th Way SE: From SE 392nd St to SE 416th St	Construct guardrail	Roadside	Guardrail	\$ 300,000	YES

King County Road Services: Transportation Needs Report 2016 Project List - Change Report
Public Review Draft, November 6th, 2016

Project Number	Project Location	Project Scope	Product Family	Category	Est. Cost	New Project?
Map Area: Duvall (13)						
Corridor: Kelly Rd NE						
BR-5007	Kelly Road Bridge: Kelly Rd NE at a drainage ditch, west of Stossel Creek Way	Replace bridge	Bridges and structures	Bridge	\$ 1,294,000	
Corridor: Misc.						
BR-5032	Stossel Creek Bridge: Stossel Creek Rd NE at Stossel Creek, about 6.2 miles northeast of Kelly Rd NE	Replace bridge	Bridges and structures	Bridge	\$ 2,540,000	
BR-5034A	Lake Joy Bridge: NE Lake Joy Dr & 346th Pl NE	Replace bridge	Bridges and structures	Bridge	\$ 1,980,000	
DR-15-12	NE Lake Joy Rd & Cherry Creek	Replace undersized culvert	Drainage	Drainage	\$ 1,600,000	YES
DR-5	NE 195th St & 324th Ave NE	Replace failing culvert	Drainage	Drainage	\$ 530,000	
GR-15-23	NE Lake Joy Rd: From Kelly Rd NE to W Lake Joy Dr NE	Construct guardrail	Roadside	Guardrail	\$ 40,000	YES
GR-15-24	NE Mountain View Rd: From NE Cherry Valley Rd to End of Road	Construct guardrail	Roadside	Guardrail	\$ 40,000	YES
GR-94	NE 124th St: From State Route 203 to end of road	Construct guardrail	Roadside	Guardrail	\$ 10,000	

King County Road Services: Transportation Needs Report 2016 Project List - Change Report
Public Review Draft, November 6th, 2016

Project Number	Project Location	Project Scope	Product Family	Category	Est. Cost	New Project?
Map Area: East Enumclaw (19)						
Corridor: Misc.						
BR-3049	284th Ave SE Bridge: 284th Ave SE at Boise Creek, about 0.5 mile south of SE 456th St	Replace bridge	Bridges and structures	Bridge	\$ 1,545,600	
BR-3051	Boise Creek Bridge: 276th Ave SE at Boise Creek, south of SE 456th St	Replace bridge	Bridges and structures	Bridge	\$ 1,294,000	
BR-3052	Boise Creek Bridge: 268th Ave SE at Boise Creek crossing, south of Warner Ave	Replace bridge	Bridges and structures	Bridge	\$ 1,294,000	
DR-3	SE 440th St at the 27000 block	Replace failing culvert	Drainage	Drainage	\$ 530,000	
GR-103	SE 432nd St: From Enumclaw C/L to 284th Ave SE	Construct guardrail	Roadside	Guardrail	\$ 340,000	
GR-15-15	286th Ave SE/288th Ave SE: From SE 464th St to SE 480th St	Construct guardrail	Roadside	Guardrail	\$ 130,000	YES
GR-86	284th Ave SE: From Mud Mountain Rd to State Route 410	Construct guardrail	Roadside	Guardrail	\$ 480,000	
NM-5008	SE 432nd St: From 284th Ave SE to 268th AVE SE	Provide nonmotorized facility	Roadside	Non motorized	\$ 920,000	

King County Road Services: Transportation Needs Report 2016 Project List - Change Report
Public Review Draft, November 6th, 2016

Project Number	Project Location	Project Scope	Product Family	Category	Est. Cost	New Project?
Map Area: East Federal Way (5)						
Corridor: 28th Ave S						
NM-4066	28th Ave S: From S 349 St to S 360th St	Construct walkway	Roadside	Non motorized	\$ 310,000	
Corridor: 51st Ave S						
SW-21	51st Ave S & S 316th St	Construct roundabout or south and west left-turn lanes	Traffic control devices	Intersection priority array	\$ 1,600,000	
Corridor: Military Rd S						
IPA-25	Military Rd S & S 360th St	Construct roundabout or signalized intersection with turn lanes	Traffic control devices	Intersection priority array	\$ 1,600,000	YES
NM-5014	Peasley Canyon Way S to State Route 161	Provide nonmotorized facility	Roadside	Non motorized	\$ 9,170,000	
Corridor: Peasley Canyon Rd S						
ITS-8	S Peasley Canyon Rd: From Military Rd S to West Valley Hwy	Upgrade signal equipment and coordinate signal timing	Traffic control devices	ITS	\$ 2,440,000	
Corridor: Peasley Canyon Way						
RC-42	Peasley Canyon Way S: From S Peasley Canyon Rd to Military Rd S	Construct retaining wall to prevent slides	Bridges and structures	VRS hotspot	\$ 630,000	
Corridor: S 277th St						
HARS-15-5	55th Ave S & S 277th St	Illumination, radar speed signs	Traffic Control Devices	Hal Hars	\$ 1,370,000	YES
Corridor: S 321st St						
OP-INT-100	S 321st St & S Peasley Canyon Rd	Reconstruct 321st Street approach and expand turn lanes	Traffic control devices	Intersection priority array	\$ 2,140,000	
SW-73	46th Pl S & S 321st St	Construct roundabout or signalized intersection with turn lanes	Traffic control devices	Intersection priority array	\$ 2,350,000	
Corridor: S 360th St						
OP-RD-48	S 360th St: From State Route 161 to 28th Ave S	Construct a two-way left turn lane	Traffic control devices	Intersection priority array	\$ 4,510,000	
Corridor: Misc.						
NM-4067	32nd Ave S: From S 360th St to S 368th St	Construct walkway	Roadside	Non motorized	\$ 310,000	

King County Road Services: Transportation Needs Report 2016 Project List - Change Report
Public Review Draft, November 6th, 2016

Project Number	Project Location	Project Scope	Product Family	Category	Est. Cost	New Project?
Map Area: East North Bend (22)						
Corridor: Misc.						
GR-15-3	437th Ave SE: From Cedar Falls Way SE to SE 150th St	Construct guardrail	Roadside	Guardrail	\$ 20,000	YES
GR-78	SE Middle Fork Rd: From North Bend city limits to 496th Ave SE	Construct guardrail	Roadside	Guardrail	\$ 10,000	
OP-RD-39	SE Mount Si Rd: From 452 AVE SE to 800' E	Realign roadway	Traffic control devices	Intersection priority array	\$ 480,000	
OP-RD-54	SE Middle Fork Rd: From 496th Ave SE to 476th Ave SE	Reconstruct roadway	Roadway	Reconstruction	\$ 4,510,000	

King County Road Services: Transportation Needs Report 2016 Project List - Change Report
Public Review Draft, November 6th, 2016

Project Number	Project Location	Project Scope	Product Family	Category	Est. Cost	New Project?
Map Area: East Renton/Lake Youngs (9)						
Corridor: 196th Ave SE						
RC-50	196th Ave SE: From SE 161st St to SE 170th St	Construct a retaining wall to prevent slides	Bridges and structures	VRS hotspot	\$ 1,060,000	
Corridor: Cedar Grove Rd SE						
BR-83D	Issaquah Creek Bridge: Cedar Grove Rd SE at Issaquah Creek, about 0.5 mile north of SE 156th.	Replace bridge	Bridges and structures	Bridge	\$ 3,020,000	
Corridor: Issaquah Hobart Rd SE						
BR-1384A	Fifteen Mile Creek Bridge: Issaquah Hobart Rd SE at Fifteenmile Creek, south of SE May Valley Rd	Replace bridge	Bridges and structures	Bridge	\$ 8,170,000	
CP-15-2	Issaquah Hobart Rd SE: From Issaquah city limits to Cedar Grove Rd SE	Construct congestion relief measures	Roadway	Capacity	\$ 29,440,000	YES
OP-INT-124	Issaquah-Hobart Rd SE & SE May Valley Rd	Construct roundabout	Traffic control devices	Intersection priority array	\$ 2,560,000	
ITS-15	Issaquah Hobart Rd SE: From Cedar Grove Rd SE to Highway 18	Install cameras, variable message signs, weather station, data stations, vehicle detection, and optic communications	Traffic control devices	ITS	\$ 810,000	
RC-118	Issaquah Hobart Rd SE: From S Issaquah city limits to SE May Valley Rd	Reconstruct roadway 1.86 miles	Roadway	Reconstruction	\$ 1,000,000	
RC-119	Issaquah Hobart Rd SE: From SE May Valley Rd to Cedar Grove Rd SE	Reconstruct roadway 0.98 mile	Roadway	Reconstruction	\$ 2,650,000	
RC-120	Issaquah Hobart Rd SE: From SE 156th St to Cedar Grove Rd SE	Reconstruct roadway 1.2 miles	Roadway	Reconstruction	\$ 2,280,000	
RC-121	Issaquah Hobart Rd SE: From SE 156th St to Highway 18	Reconstruct roadway 2.27miles	Roadway	Reconstruction	\$ 3,940,000	
Corridor: Preston Fall City Rd SE						
BR-186J	Fire Station Bridge: Preston-Fall City Rd over pedestrian trail, east of Upper Preston Rd SE	Replace bridge	Bridges and structures	Bridge	\$ 1,294,000	
Corridor: SE 128th St						
GR-15-5	SE 128th St: From Renton city limits (158th Ave SE) to 175th Ave SE	Construct guardrail	Roadside	Guardrail	\$ 50,000	YES
OP-RD-21	SE 128th St: From Patriot Way SE to 168th Ave SE	Improve sight distance and construct turn lanes	Traffic control devices	Intersection priority array	\$ 1,410,000	
Corridor: SE 128th W						
ITS-28	SE 128th St: From 148th Ave SE to SE May Valley Road	Install cameras, vehicle detection, and fiber optic; and upgrade, interconnect, and synchronize signals	Traffic control devices	ITS	\$ 5,010,000	
Corridor: 140th Ave SE						
ITS-23	140th Ave SE: From SE 192 St to City of Kent	Install cameras, vehicle detection, and fiber optic communications infrastructure; and upgrade, interconnect and synchronize signals	Traffic control devices	ITS	\$ 3,913,000	

King County Road Services: Transportation Needs Report 2016 Project List - Change Report
Public Review Draft, November 6th, 2016

Project Number	Project Location	Project Scope	Product Family	Category	Est. Cost	New Project?
Corridor: SE 142nd PI						
OP-RD-25	154 PL SE / SE 142 PL: From SE Jones Rd to 156th Ave SE	Construct congestion relief measures	Roadway	Capacity	\$ 5,230,000	
ITS-19	154th PI SE/SE 142nd PI: From State Route 169 to 156th Ave SE	Install cameras, pavement condition sensors, and speed warning system	Traffic control devices	ITS	\$ 230,000	
Corridor: SE 204th Way						
BR-3109B	Lake Youngs Way Bridge: SE Lake Youngs Way at Big Soos Creek, about 0.3 mile northeast of SE 208th St	Replace bridge	Bridges and structures	Bridge	\$ 1,980,000	
SW-81	SE 140th Ave SE & SE 200th St	Construct left-turn lanes	Traffic control devices	Intersection priority array	\$ 1,600,000	
Corridor: SE May Valley Rd						
BR-493C	Fifteen Mile Creek Bridge: SE May Valley Rd at Fifteenmile Creek, west of Issaquah Hobart Rd SE	Replace bridge	Bridges and structures	Bridge	\$ 4,140,000	
OP-RD-22	SE May Valley Rd: From SE 128 Way to Issaquah Hobart Rd SE	Widen travel lanes	Traffic control devices	Intersection priority array	\$ 8,840,000	
ITS-29	SE May Valley Rd: From State Route 900 to Issaquah Hobart Rd SE	Install cameras, vehicle detection, and road weather information system sensors	Traffic control devices	ITS	\$ 330,000	
OP-RD-26	SE May Valley RD: From State Route 900 to SE 128 WY	Improve sight distance	Traffic control devices	Intersection priority array	\$ 7,400,000	
Corridor: SE Petrovitsky Rd						
CP-15	140th Ave SE & SE Petrovitsky Rd	Construct congestion relief measures	Roadway	Capacity	\$ 16,520,000	
CP-15-4	SE Petrovitsky Rd: From 151st Ave SE to SE 184th St	Construct congestion relief measures	Roadway	Capacity	\$ 10,230,000	YES
IPA-1	SE Petrovitsky Rd: From 140th Ave SE to 143rd Ave SE	Install street lighting for existing turn lanes and tapers	Traffic control devices	Intersection priority array	\$ 410,000	YES
OP-INT-106	SE Petrovitsky Rd & SE 192nd St	Construct southeast bound left turn lane	Traffic control devices	Intersection priority array	\$ 840,000	
ITS-24	SE Petrovitsky Rd: From 151st Ave SE to Highway 18	Install cameras, vehicle detection, weather station, and fiber optic communications	Traffic control devices	ITS	\$ 9,650,000	
RC-3	SE Petrovitsky Rd: From 134th Ave SE to 140th Ave SE	Road reconstruction	Roadway	Reconstruction	\$ 3,500,000	

King County Road Services: Transportation Needs Report 2016 Project List - Change Report
Public Review Draft, November 6th, 2016

Project Number	Project Location	Project Scope	Product Family	Category	Est. Cost	New Project?
Corridor: Misc.						
BR-1741A	Issaquah Creek Bridge: 252nd Ave SE at Issaquah Creek, west of Issaquah Hobart Rd SE	Replace bridge	Bridges and structures	Bridge	\$ 7,980,000	
BR-3099	Maxwell Road Bridge: Maxwell Rd SE at Gem Creek, east of State Route 169	Replace bridge	Bridges and structures	Bridge	\$ 1,294,000	
BR-3110	Soos Creek Bridge: SE 208th St at Soos Creek, east of 136th Ave SE	Replace bridge	Bridges and structures	Bridge	\$ 1,682,450	
BR-3202	Maxwell Road Bridge: 225th Ave SE/Maxwell Rd SE cattle crossing, south of 220th Ave SE at private road	Replace bridge	Bridges and structures	Bridge	\$ 1,460,000	
BR-593C	May Creek Bridge: 164th Ave SE at May Creek, about 0.5 mile north of State Route 900	Replace bridge	Bridges and structures	Bridge	\$ 1,294,000	
BR-83B	Issaquah Creek Bridge: SE 156th St at Issaquah Creek, east of Cedar Grove Rd SE	Replace bridge	Bridges and structures	Bridge	\$ 2,240,000	
DR-15-3	229th Dr SE & SE 139th Ct	Construct scour mitigation measures	Drainage	Drainage	\$ 240,000	YES
GR-15-14	SE 208th St: From 244th Ave SE to 276th Ave SE	Construct guardrail	Roadside	Guardrail	\$ 270,000	YES
GR-15-19	236th Ave SE, From SE 196th St to SE Norvydan Rd	Construct guardrail	Roadside	Guardrail	\$ 120,000	YES
GR-15-35	SE 156th St: From SE Cedar Grove Rd to Issaquah Hobart Rd SE	Construct guardrail	Roadside	Guardrail	\$ 360,000	YES
GR-15-36	SE Mirrormont Dr: From Issaquah Hobart Rd SE to Tiger Mountain Rd SE	Replace jersey barrier with guardrail	Roadside	Guardrail	\$ 50,000	YES
GR-15-8	SE 127th St: From SE May Valley Rd to 206th Pl SE	Construct guardrail	Roadside	Guardrail	\$ 140,000	YES
OP-RD-24	SE May Valley Rd: From Renton city limits (148th Ave SE) to State Route 900	Widen travel lanes	Traffic control devices	Intersection priority array	\$ 18,890,000	
ITS-34	164th Ave SE: From SE 128th St to SE May Valley Rd	Install cameras, vehicle detection, and fiber optic communications infrastructure	Traffic control devices	ITS	\$ 1,740,000	
NM-5038	SE 208th St: From 148th Ave SE to 132nd Ave SE	Provide nonmotorized facility	Roadside	Non motorized	\$ 340,000	

King County Road Services: Transportation Needs Report 2016 Project List - Change Report
Public Review Draft, November 6th, 2016

Project Number	Project Location	Project Scope	Product Family	Category	Est. Cost	New Project?
Map Area: Kent/Des Moines (4)						
Corridor: Military Rd S						
CP-5	Military Rd S: From S 272nd St to S 304th St	Construct congestion relief measures	Roadway	Capacity	\$ 6,680,000	
Corridor: S 272nd St						
OP-INT-120	40th Ave S & S 272nd St	Add turn lanes on 272nd and rebuild the traffic signal	Traffic control devices	Intersection priority array	\$ 2,670,000	
BR-3126	S 277th St at Mullen Slough, west of State Route 167	Replace bridge	Bridges and structures	Bridge	\$ 2,460,000	
CP-15-6	S 277th St & 55th Ave S/S Star Lake Rd	Construct congestion relief measures	Traffic control devices	Capacity	\$ 3,650,000	YES
DR-2	S 277th St & 55th Ave S	Construct drainage improvement to reduce property flooding	Drainage	Drainage	\$ 530,000	
Corridor: S 288th St						
IPA-3	S 288th St: From Federal Way city limits (I-5) to Auburn city limits (51st Ave S)	Restripe road from 4 to 3 lanes and modify the signal	Traffic control devices	Intersection priority array	\$ 950,000	YES
Corridor: West Valley Hwy N						
DR-15-10	West Valley Hwy N: 1300 Feet south of S 277th St	Replace failing culvert	Drainage	Drainage	\$ 660,000	YES
Corridor: Misc.						
DR-15-9	Green River Rd S & 94th Pl S	Replace failing culvert	Drainage	Drainage	\$ 1,170,000	YES
GR-15-29	S 282nd St: From 46th Ave SE to 48th Ave SE	Construct guardrail	Roadside	Guardrail	\$ 70,000	YES
GR-15-39	94th Pl S: From Kent city limits to Green River Rd	Construct guardrail	Roadside	Guardrail	\$ 330,000	YES
NM-4042	38th Ave S: From S 304th St to S 308th St	Pave shoulders (east side)	Roadside	Non motorized	\$ 110,000	
NM-5015	Green River Rd: From S 259th St to S 277th St (Kent city limits)	Provide nonmotorized facility	Roadside	Non motorized	\$ 10,060,000	
NM-9970	34th Ave S: From S 288th St to S 298th St	Construct sidewalk (west side)	Roadside	Non motorized	\$ 580,000	
NM-9971	36th Pl S/ S 294 St/ 45 Pl S: From S 298th St to S 288th St	Construct sidewalk (west side)	Roadside	Non motorized	\$ 880,000	
RC-24	S 304th St: From 32nd Ave S to 37th Ave S	Armor shoulders to reduce road washouts during floods	Roadside	VRS hotspot	\$ 230,000	

King County Road Services: Transportation Needs Report 2016 Project List - Change Report
Public Review Draft, November 6th, 2016

Project Number	Project Location	Project Scope	Product Family	Category	Est. Cost	New Project?
Map Area: Mount Si (21)						
Corridor: Misc.						
122N	Tate Creek Bridge: SE 73rd St at Tate Creek, west of 440th Ave SE	Replace bridge	Bridges and structures	Bridge	\$ 5,970,000	
RC-8	N Fork Rd SE: From 428th Ave SE to Lake Hancock Rd	Road reconstruction (including drainage infrastructure)	Roadway	Reconstruction	\$ 180,000	

King County Road Services: Transportation Needs Report 2016 Project List - Change Report
Public Review Draft, November 6th, 2016

Project Number	Project Location	Project Scope	Product Family	Category	Est. Cost	New Project?
Map Area: Newcastle/Issaquah (8)						
Corridor: Issaquah Hobart Rd SE						
HARS-15-13	Issaquah Hobart Rd SE & SE 113th St	Add twin left turn lanes	Traffic control devices	Hal Hars	\$ 740,000	YES
Corridor: Misc.						
GR-15-34	169th Ave SE/SE Licorice Way: From SE 112th St to end of road	Construct guardrail	Roadside	Guardrail	\$ 50,000	YES

King County Road Services: Transportation Needs Report 2016 Project List - Change Report
Public Review Draft, November 6th, 2016

Project Number	Project Location	Project Scope	Product Family	Category	Est. Cost	New Project?
Map Area: North Enumclaw (11)						
Corridor: 244th Ave SE						
NM-5012	244th Ave SE: From State Route 164 to SE 400 St	Provide nonmotorized facility	Roadside	Non motorized	\$ 10,080,000	
Corridor: Kent Black Diamond Rd SE						
ITS-27	SE Auburn Black Diamond Rd: From Kent Black Diamond Rd SE to SE Lake Holm Rd	Install vehicle detection/flasher system and slide detection system	Traffic control devices	ITS	\$ 170,000	
Corridor: SE Auburn Black Diamond Rd						
DR-15-16	SE Auburn Black Diamond Rd at Krisp Creek	Replace undersized culvert	Drainage	Drainage	\$ 1,070,000	
BR-3082	192nd Ave SE at Covington Creek, about 0.3 mile north of SE Lake Holm Rd	Replace bridge	Bridges and structures	Bridge	\$ 1,804,810	
BR-3084	SE Auburn Black Diamond Rd at Covington Creek, west of Thomas Rd SE	Replace bridge	Bridges and structures	Bridge	\$ 1,927,170	
IPA-12	SE Auburn Black Diamond Rd & 190th Ave SE	Realign intersection	Traffic control devices	Intersection priority array	\$ 770,000	YES
RC-138	SE Auburn Black Diamond Rd: From SE Green Valley Rd to SE Lake Holm Dr	Reconstruct roadway 0.23 miles	Roadway	Reconstruction	\$ 350,000	
Corridor: SE Lake Holm Rd						
OP-RD-44	SE Lake Holm Rd: From East Lake Holm Dr SE to 170th Pl SE	Construct congestion relief measures	Roadway	Capacity	\$ 1,000,000	
RC-140	SE Lake Holm Rd: From SE Auburn Black Diamond Rd to 147th Ave SE	Reconstruct roadway 1.64 miles	Roadway	Reconstruction	\$ 2,440,000	
Corridor: Misc.						
BR-3015	Patton Bridge: SE Green Valley Rd at Green River, about 1.5 miles southeast of Highway 18	Replace bridge	Bridges and structures	Bridge	\$ 24,920,000	
BR-3020	Green Valley Rd Bridge: SE Green Valley Rd, about 5.5 miles east of Highway 18	Replace bridge	Bridges and structures	Bridge	\$ 2,800,000	
BR-3022	Green Valley Rd Bridge: SE Green Valley Rd, about 6.7 miles east of Highway 18	Replace bridge	Bridges and structures	Bridge	\$ 2,800,000	
BR-3030	SE 380th Street Bridge: SE 380th St & SE 383rd Way, about 1 mile west of State Route 169	Replace bridge	Bridges and structures	Bridge	\$ 1,980,000	
BR-3056A	SE 408th Street Bridge: SE 408 St, about 0.2 miles east of State Route 164	Replace bridge	Bridges and structures	Bridge	\$ 1,570,000	
GR-15-28	SE 384th St/SE 383rd St/SE 380th St: From 244th Ave SE to State Route 169	Construct guardrail	Roadside	Guardrail	\$ 50,000	YES
GR-92	228th Ave SE: From SE 400th St to SE 452ND St	Construct guardrail	Roadside	Guardrail	\$ 630,000	
OP-INT-97	Thomas Rd SE & Kent Black Diamond Rd SE	Realign intersection	Traffic control devices	Intersection priority array	\$ 860,000	
RC-137	SE Auburn Black Diamond Rd: From Highway 18 to SE Green Valley Rd	Reconstruct roadway 0.18 miles	Roadway	Reconstruction	\$ 320,000	
RC-142	SE Green Valley Rd: From 243rd Ave SE to State Route 169	Reconstruct roadway 1.3 miles	Roadway	Reconstruction	\$ 2,140,000	

King County Road Services: Transportation Needs Report 2016 Project List - Change Report
Public Review Draft, November 6th, 2016

Project Number	Project Location	Project Scope	Product Family	Category	Est. Cost	New Project?
Map Area: North Fork Snoqualmie (20)						
Corridor: Misc.						
BR-364A	Deep Creek Bridge: North Fork Rd SE, about 13.7 miles north of North Bend	Replace bridge	Bridges and structures	Bridge	\$ 3,560,000	
RC-19	North Fork Rd SE & N Fork Snoqualmie River	Construct retaining wall to prevent slides	Bridges and structures	VRS hotspot	\$ 100,000	

King County Road Services: Transportation Needs Report 2016 Project List - Change Report
Public Review Draft, November 6th, 2016

Project Number	Project Location	Project Scope	Product Family	Category	Est. Cost	New Project?
Map Area: North Vashon (1)						
Corridor: SW Cemetery Rd						
NM-4079	SW Cemetery Rd: From Beall Rd SW to access road #9303	Improve pathway on south side	Roadside	Non motorized	\$ 86,000	
Corridor: SW Cove Rd						
RC-58	Crescent Dr SW: From West Side Highway to SW Cove Road	Reconstruct roadway	Roadway	VRS hotspot	\$ 660,000	
Corridor: Vashon Hwy SW						
SW-96	Vashon Highway SW & SW Cemetery Rd	Construct roundabout	Traffic control devices	Intersection priority array	\$ 1,390,000	
Corridor: Westside Hwy SW						
RC-56	Westside Highway SW: From Crescent Dr SW to Crescent Dr SW	Reconstruct roadway	Roadway	VRS hotspot	\$ 520,000	
Corridor: Misc.						
DR-8	SW 171st St & 93rd Ave SW (Gorsuch Creek)	Replace failing culvert	Drainage	Drainage	\$ 910,000	
NM-0106	SW Bank Rd: From 97 Pl SW to Beall Rd SW	Construct asphalt shoulder (south side)	Roadside	Non motorized	\$ 670,000	
NM-0203	Vashon Hwy SW: From SW 177th St to 98th Pl SW	Construct sidewalk (east and south sides)	Roadside	Non motorized	\$ 90,000	
NM-15-9	SE Cemetery Rd: From 107th Ave SW to SW 184th St	Construct asphalt pathway	Roadside	Non motorized	\$ 810,000	
NM-5054	SW Bank Rd: From 107th Ave SW to Vashon Hwy SW	Provide nonmotorized facility	Roadside	Non motorized	\$ 690,000	

King County Road Services: Transportation Needs Report 2016 Project List - Change Report
Public Review Draft, November 6th, 2016

Project Number	Project Location	Project Scope	Product Family	Category	Est. Cost	New Project?
Map Area: Ravensdale (17)						
Corridor: 276th Ave SE						
RC-127	276th Ave SE: From SE 216th St to SE Summit Landsburg Rd	Reconstruct roadway 2.59 miles	Roadway	Reconstruction	\$ 4,970,000	
Corridor: Landsburg Rd SE						
RC-128	Landsburg Rd SE: From SE Summit Landsburg Rd to SE Kent Kangley Rd	Reconstruct roadway 1.27 miles	Roadway	Reconstruction	\$ 2,170,000	
Corridor: Retreat Kanaskat Rd						
OP-INT-92	Kent-Kangley Rd & Retreat-Kanaskat Rd	Realign Intersection and install turn lanes	Traffic control devices	Intersection priority array	\$ 1,280,000	
RC-136	SE Retreat Kanaskat Rd: From SE Kent Kangley Rd to Cumberland Kanasket Rd	Reconstruct roadway 3.04 miles	Roadway	Reconstruction	\$ 4,780,000	
Corridor: SE 216th St						
NM-5049	SE 216th St: From SE 276th Ave SE to 276th Ave SE	Provide nonmotorized facility	Roadside	Non motorized	\$ 1,240,000	
RC-130	SE 216th St: From 244th Ave SE to 276th Ave SE	Reconstruct roadway 2.0 miles	Roadway	Reconstruction	\$ 3,000,000	
Corridor: SE Kent-Kangley Rd						
IPA-22	SE Kent Kangley & Landsburg Rd SE	Construct roundabout or traffic signalization with turn lanes	Traffic control devices	Intersection priority array	\$ 850,000	YES
RC-132	SE Kent-Kangley Rd: From Kent C/L to Landsburg Rd SE	Reconstruct roadway 1.14 miles	Roadway	Reconstruction	\$ 2,640,000	
RC-133	SE Kent Kangley Rd: From Landsburg Rd SE to Retreat Kanaskat Rd	Reconstruct roadway 1.18 miles	Roadway	Reconstruction	\$ 2,660,000	
Corridor: SE Ravensdale Way						
NM-5051	Black Diamond-Ravensdale Rd SE: From State Route 169 to 276th Ave SE	Provide nonmotorized facility	Roadside	Non motorized	\$ 2,480,000	
RC-135	SE Ravensdale Way: From SE Kent Kangley Rd to 268th Ave SE	Reconstruct roadway 0.6 miles	Roadway	Reconstruction	\$ 900,000	
Corridor: Misc.						
GR-11	SE 309th St: From Cumberland-Kanasket Rd SE to SE 310th St	Construct guardrail	Roadside	Guardrail	\$ 130,000	
GR-15-25	SE 224th St: From 244th Ave SE to 276th Ave S	Construct guardrail	Roadside	Guardrail	\$ 30,000	YES
GR-95	SE Courtney Rd: From Kanasket-Kangley Rd to end of route	Construct guardrail	Roadside	Guardrail	\$ 10,000	
RC-15-3	SE Summit Landsburg Rd: From City of Kent city limits (244th Ave SE) to Landsburg Rd SE	Reconstruct Roadway	Roadway	Reconstruction	\$ 3,700,000	

King County Road Services: Transportation Needs Report 2016 Project List - Change Report
Public Review Draft, November 6th, 2016

Project Number	Project Location	Project Scope	Product Family	Category	Est. Cost	New Project?
Map Area: Redmond/Sammamish (7)						
Corridor: 208th Ave NE						
OP-INT-113	208th Ave NE & NE Union Hill Rd	Construct southbound right turn lane	Traffic control devices	Intersection priority array	\$ -	
Corridor: 238th Ave						
SW-51	238th Ave NE & NE 63rd PL	Construct roundabout	Traffic control devices	Intersection priority array	\$ 1,390,000	
Corridor: NE Union Hill Rd						
OP-RD-5	NE Union Hill Rd: From 208th Ave NE to 238th Ave NE	Construct congestion relief measures	Roadside	Capacity	\$ 6,710,000	
CP-15-1	NE Union Hill Rd: From 196th Ave NE to 208th Ave NE	Construct congestion relief measures	Roadway	Capacity	\$ 11,230,000	YES
DR-15-2	NE Union Hill Rd & 225th Ave NE	Replace failing culvert	Drainage	Drainage	\$ 1,430,000	YES
ITS-11	NE Union Hill Rd: From 238th Ave NE to NE Ames Lake Rd	Install cameras, speed warning system, vehicle detection, and fiber optic communications	Traffic control devices	ITS	\$ 190,000	
ITS-20	NE Union Hill Rd: From 196th Ave NE to 238rd Ave NE	Install cameras, speed warning system, vehicle detection, and fiber optic communications	Traffic control devices	ITS	\$ 3,840,000	
RC-44	NE Union Hill Rd: From 196th Ave NE to 206th PI NE	Construct retaining wall to stabilize slope	Bridges and structures	VRS hotspot	\$ 180,000	
RC-51	NE Union Hill Rd: From 229th Ave NE to 238th Ave NE	Construct retaining wall to stabilize slope	Bridges and structures	VRS hotspot	\$ 2,420,000	
Corridor: West Snoqualmie Valley Rd NE						
RC-39	West Snoqualmie Valley Rd NE: From NE 124th St to Ames Lake-Carnation Rd	Construct retaining wall to prevent slides	Bridges and structures	VRS hotspot	\$ 3,700,000	
Corridor: Misc.						
BR-578A	Evans Creek Bridge: 196th Ave NE & State Route 202 at Evans Creek	Replace bridge	Bridges and structures	Bridge	\$ 1,570,000	
DR-7	NE 40th St & 26th Ave NE (Dry Creek)	Replace failing culvert	Drainage	Drainage	\$ 530,000	
GR-15-27	NE 50th St: From 197th Ave NE to Sahallee Way NE	Construct guardrail	Roadside	Guardrail	\$ 420,000	YES
RC-116	NE Union Hill Rd: From 238th Ave NE to 258th Ave NE	Reconstruct roadway 1.5 miles	Roadway	Reconstruction	\$ 1,990,000	
RC-35	NE 50th St: From 214 Ave NE to State Route 202	Armor shoulders to reduce road washouts during floods	Roadside	VRS hotspot	\$ 80,000	

King County Road Services: Transportation Needs Report 2016 Project List - Change Report
Public Review Draft, November 6th, 2016

Project Number	Project Location	Project Scope	Product Family	Category	Est. Cost	New Project?
Map Area: Skykomish (23)						
Corridor: Misc.						
BR-509A	Baring Bridge: NE Index Creek Rd over the South Fork Skykomish River, west of Highway 2	Replace bridge	Bridges and structures	Bridge	\$ 17,040,000	
GR-15-12	NE Old Cascade Hwy: From State Route 2 to Skykomish City Limits	Construct guardrail	Roadside	Guardrail	\$ 400,000	YES
RC-55	NE Money Creek Rd & Money Creek	Construct retaining wall to prevent slides	Bridges and structures	VRS hotspot	\$ 790,000	
RC-57	NE Old Cascade Highway at Miller River	Permanent road end closure improvements	Roadway	Reconstruction	\$ 4,917,000	

King County Road Services: Transportation Needs Report 2016 Project List - Change Report
Public Review Draft, November 6th, 2016

Project Number	Project Location	Project Scope	Product Family	Category	Est. Cost	New Project?
Map Area: Snoqualmie (15)						
Corridor: Preston Fall City Rd SE						
DR-15-14	Preston Fall City Rd SE & SE 47th St	Replace undersized and failing culvert	Drainage	Drainage	\$ 800,000	
ITS-14	Preston Fall City Rd SE: From I-90 to State Route 202	Install cameras, vehicle detection, weather station, slide detection, flood detection, ice detection, and fiber optic	Traffic control devices	ITS	\$ 6,320,000	
OP-INT-88	Preston Fall City Rd SE & SE 43rd St	Realign intersection	Traffic control devices	Intersection priority array	\$ 740,000	
RC-15-4	Preston Fall City Road: From the 7600 block to 7800 block	Reconstruct roadway	Roadway	Reconstruction	\$ 3,060,000	
Corridor: SE High Point Way						
IPA-27	SE 82nd St/SE High Point Way & SE 82nd St	Construct a roundabout	Traffic control devices	Intersection priority array	\$ 3,470,000	YES
Corridor: Misc.						
BR-1086B	Coal Creek Bridge: 378th Ave SE at Coal Creek	Replace bridge	Bridges and structures	Bridge	\$ 1,460,000	
BR-249B	C.W. Neal Road Bridge: Neal Rd SE, about 1.5 mile south of State Route 203	Replace bridge	Bridges and structures	Bridge	\$ 1,460,000	
BR-249C	C.W. Neal Road Bridge: Neal Rd SE, about 0.3 mile south of State Route 203	Replace bridge	Bridges and structures	Bridge	\$ 1,570,000	
BR-61B	Fish Hatcher Bridge: SE Fish Hatchery Rd, about 0.8 mile southwest of State Route 202	Replace bridge	Bridges and structures	Bridge	\$ 1,570,000	
99L	Kimball Creek Bridge: SE 76th St at Kimball Creek, 0.5 mile west of State Route 202	Replace bridge	Bridges and structures	Bridge	\$ 2,920,000	
DR-15-15	SE 55th St & W Lake Alice Rd SE	Replace culvert	Drainage	Drainage	\$ 1,600,000	
GR-121	Upper Preston Rd SE: From 312th Ave SE to under I-90 Overpass	Construct guardrail	Roadside	Guardrail	\$ 20,000	
GR-15-11	SE 48th St: From 317th Pl SE to 328th Ave SE	Construct guardrail	Roadside	Guardrail	\$ 110,000	YES
GR-15-20	356th Dr SE/364th Way SE: From State Route 203 to end of road	Construct guardrail	Roadside	Guardrail	\$ 100,000	YES
GR-28	SE David Powell Rd: From Preston-Fall City Rd SE to end of route	Construct guardrail	Roadside	Guardrail	\$ 210,000	
GR-98	Fish Hatchery Rd/372nd Ave SE: From State Route 202 to State Route 202	Construct guardrail	Roadside	Guardrail	\$ 30,000	
RC-7	Neal Rd SE: From State Route 203 to State Route 202	Reconstruct road at re-occurring sinkhole	Roadway	Reconstruction	\$ 440,000	
RC-15-5	Upper Preston Rd: From SE 97th St to SE 97th St	Stabilize downhill side and improve drainage	Roadside	VRS hotspot	\$ 2,540,000	
RC-17	SE 24th St: From 309th Ave SE to W Snoqualmie River Rd	Armor shoulders to reduce road washouts during floods	Roadside	VRS hotspot	\$ 370,000	
RC-40	Neal Rd SE: From State Route 203 to State Route 203	Armor shoulders to reduce road washouts during floods	Roadside	VRS hotspot	\$ 1,260,000	

King County Road Services: Transportation Needs Report 2016 Project List - Change Report
Public Review Draft, November 6th, 2016

Project Number	Project Location	Project Scope	Product Family	Category	Est. Cost	New Project?
Map Area: South Enumclaw (12)						
Corridor: 244th Ave SE						
BR-3068	Newaukum Creek Bridge: 244th Ave SE at Newaukum Creek, 0.2 mile north of SE 436th St	Replace bridge	Bridges and structures	Bridge	\$ 2,420,000	
Corridor: Misc.						
BR-3055A	Boise X Connection Bridge: SE Mud Mountain Dam Rd a Boise Creek, south east of State Route 410	Replace bridge	Bridges and structures	Bridge	\$ 2,010,000	
BR-3060	208th Ave SE Bridge: 208th Ave SE & SE 448th St	Replace bridge	Bridges and structures	Bridge	\$ 1,294,000	
GR-104	196th Ave SE: From SE 400th St to SE 456th St	Construct guardrail	Roadside	Guardrail	\$ 20,000	
GR-15-31	SE 424th St: From 196th Ave SE to State Route 169	Construct guardrail	Roadside	Guardrail	\$ 270,000	YES
GR-96	SE 456th Way: From 196th Ave SE to 228th Ave SE	Construct guardrail	Roadside	Guardrail	\$ 410,000	

King County Road Services: Transportation Needs Report 2016 Project List - Change Report
Public Review Draft, November 6th, 2016

Project Number	Project Location	Project Scope	Product Family	Category	Est. Cost	New Project?
Map Area: South Vashon (2)						
Corridor: Dockton Rd SW						
GR-15-40	Dockton Rd SW: From SW Ellisport Rd to SW 222nd St	Construct guardrail along seawall	Roadside	Guardrail	\$ 30,000	YES
RC-10	Dockton Rd SW: From SW Ellisport Road to Portage Way SW	Replace failing seawall	Bridges and structures	VRS hotspot	\$ 35,780,000	
Corridor: SW Quartermaster Dr						
GR-15-42	SW Quartermaster Dr: From Monument Rd SW to Dockton Rd SW	Construct guardrail along seawall	Roadside	Guardrail	\$ 280,000	YES
Corridor: Vashon Hwy SW						
GR-15-41	Vashon Hwy SW Seawall: From SW 240th St to 115th Ave SW	Construct guardrail along seawall	Roadside	Guardrail	\$ 410,000	YES
NM-9975	SW Tahlequah Rd near Tahlequah Ferry Dock	Construct asphalt shoulder (south side)	Roadside	Non motorized	\$ 210,000	
RC-15	Vashon Hwy SW: From 115th Ave SW to SW 240th Pl	Replace seawall	Roadway	VRS hotspot	\$ 17,850,000	
Corridor: Misc.						
DR-15-13	Chautauqua Beach Rd SW & Ellisport Creek	Replace undersized and failing culvert	Drainage	Drainage	\$ 1,070,000	
RC-54	Govenors Lane: From 99th Ave SW to 96th Ave SW	Replace failing seawall	Bridges and structures	VRS hotspot	\$ 3,180,000	
RC-59	Kingsbury Beach Rd: From SW 234th St to 80th Ave SW	Roadway reconstruction	Roadway	VRS hotspot	\$ 660,000	

King County Road Services: Transportation Needs Report 2016 Project List - Change Report
Public Review Draft, November 6th, 2016

Project Number	Project Location	Project Scope	Product Family	Category	Est. Cost	New Project?
Map Area: Tiger Mountain/Hobart (16)						
Corridor: 276th Ave SE						
DR-15-18	276th Ave SE at Carey Creek	Replace failing and undersized culvert	Drainage	Drainage	\$ 3,650,000	
RC-125	276th Ave SE: From Highway 18 to SE 200th St	Reconstruct roadway 1.18 miles	Roadway	Reconstruction	\$ 1,540,000	
RC-126	276th Ave SE: From SE 200th St to SE 216th St	Reconstruct roadway 1.0 miles	Roadway	Reconstruction	\$ 1,760,000	
Corridor: Misc.						
BR-909B	Clough Creek Bridge: 415th Way SE & SE 141st St	Replace bridge	Bridges and structures	Bridge	\$ 1,570,000	
GR-15-16	SE 131st St: From 409th Ave SE to 415th Way SE	Construct guardrail	Roadside	Guardrail	\$ 80,000	YES
GR-57	SE 208th St: From 276th Ave SE to End of Route	Construct guardrail	Roadside	Guardrail	\$ 440,000	
BR-1239A	Upper Preston Bridge: Upper Preston Rd SE at Echo Lake Creek, north of SE 110th St	Replace bridge	Bridges and structures	Bridge	\$ 4,030,000	

King County Road Services: Transportation Needs Report 2016 Project List - Change Report
Public Review Draft, November 6th, 2016

Project Number	Project Location	Project Scope	Product Family	Category	Est. Cost	New Project?
Map Area: White Center/Skyway (3)						
Corridor: 68th Ave S						
RC-41	68th Ave S: From Martin Luther King Way to Renton City Limits	Construct retaining walls for slope stabilization	Bridges and structures	VRS hotspot	\$ 2,500,000	
Corridor: Myers Way S						
ITS-26	1st Ave S: From SW 100th St to SW 112th St	Install cameras, vehicle detection, transit signal priority, fiber optic communications and upgrade, interconnect and synchronize signals	Traffic control devices	ITS	\$ 1,090,000	
Corridor: Rainier Ave S						
ITS-33	Rainier Ave S: From Seattle C/L to Renton C/L	Install cameras, vehicle detection, transit signal priority, fiber optic communications and upgrade, interconnect and synchronize signals	Traffic control devices	ITS	\$ 2,610,000	
Corridor: Renton Ave S						
ITS-12	Renton Ave S: From S 112th St to S 130th St	Install cameras, vehicle detection, transit signal priority, fiber optic communications and upgrade, interconnect and synchronize signals	Traffic control devices	ITS	\$ 5,450,000	
IPA-35	Renton Ave S: From 74th to 75th Ave S	Construct sidewalk along south side	Roadside	Non motorized	\$ 960,000	YES
IPA-36	Renton Ave S: From 74th to 75th Ave S	Construct sidewalk along south side	Roadside	Non motorized	\$ 960,000	YES
Corridor: S 132nd St						
NM-15-2	S 132nd St: From S Langston Rd to S 133rd St	Construct sidewalk	Roadside	Non motorized	\$ -	YES
GR-15-6	S 132nd St: From State Route 900 to S Langston Rd	Construct guardrail	Roadside	Guardrail	\$ 290,000	YES
NM-15-4	S 133rd St: From State Route 900 to S 132nd St	Complete sidewalk segments	Roadside	Non motorized	\$ -	YES
Corridor: SW 112th St						
NM-4077	SW 112th St: From 16th Ave SW to 10th Ave SW	Improve walkway	Roadside	Non motorized	\$ 240,000	

King County Road Services: Transportation Needs Report 2016 Project List - Change Report
Public Review Draft, November 6th, 2016

Project Number	Project Location	Project Scope	Product Family	Category	Est. Cost	New Project?
Corridor: Misc.						
OP-RD-12	8th Ave S: From S Seattle CL to Glendale Wy S/S 112th	Construct congestion relief measures	Roadway	Capacity	\$ 3,620,000	
OP-RD-14	6th Ave S: From Myers Way S to 5th Ave S	Construct congestion relief measures	Roadway	Capacity	\$ 2,650,000	
DR-15-4	S 96th St: From 4th Ave S to 10th Ave S	Construct drainage improvements (slip line)	Drainage	Drainage	\$ 1,360,000	YES
DR-15-5	S 96th St: From 4th Ave S to 10th Ave S	Construct drainage improvements (slip line)	Drainage	Drainage	\$ 1,810,000	YES
DR-15-6	S 96th St: From 4th Ave S to 10th Ave S	Construct drainage improvements (slip line)	Drainage	Drainage	\$ 2,770,000	YES
DR-6	60th Ave S/S Langston Rd: From S 129th St to S 124th St	Replace undersized culvert	Drainage	Drainage	\$ 530,000	
GR-15-2	S 123rd St: From S 124th St to S 125th St	Construct guardrail	Roadside	Guardrail	\$ 120,000	YES
GR-15-7	21st Ave SW: From SW 100th St to SW 106th St	Construct guardrail	Roadside	Guardrail	\$ 190,000	YES
GR-15-9	W Marginal Pl S: From Tukwila City Limits to 14th Ave S	Construct guardrail	Roadside	Guardrail	\$ 70,000	
IPA-37	S 114th St: From 74th to 80th Ave S	Construct sidewalk	Roadside	Non motorized	\$ 1,280,000	YES
IPA-38	S 114th St, From 74th to 80th Ave S	Construct sidewalk along south side	Roadside	Non motorized	\$ 530,000	YES
NM-0004	76th Ave S: From S 115th St to S 116th St	Construct asphalt walkway	Roadside	Non motorized	\$ 80,000	
NM-0302	1st Ave SW: From SW 108th St to SW 112th St	Construct sidewalk (west side)	Roadside	Non motorized	\$ 90,000	
NM-15-1	S Langston Rd: From 64th Ave S to Beacon Ave S	Construct sidewalk	Roadside	Non motorized	\$ -	YES
NM-15-3	S 120th St: From Beacon Ave S to 68th Ave S	Construct sidewalk	Roadside	Non motorized	\$ -	YES
NM-15-5	84th Ave S: From Rainier Ave S to S 124th St	Construct sidewalk	Roadside	Non motorized	\$ -	YES
NM-15-6	S 120th Pl: From 68th Ave S to Skyway Park	Construct sidewalk	Roadside	Non motorized	\$ -	YES
NM-15-7	S 123rd St: From S 125th St to S 124th St	Construct sidewalk	Roadside	Non motorized	\$ -	YES
NM-15-8	81st Pl S/S 124th St: From SE side of middle school to 84th Ave S	Construct sidewalk	Roadside	Non motorized	\$ -	YES
NM-15-10	14th Ave SW: From SW 110th St to SW 114th St	Improve east sidewalk	Roadside	Non motorized	\$ 40,000	
NM-4012	80th Ave S: From S 114th St to S 118th St	Widen shoulder (west side)	Roadside	Non motorized	\$ 40,000	
NM-5017	SW 102nd St: From 11th AVE SW to 17th AVE SW	Provide nonmotorized facility	Roadside	Non motorized	\$ 160,000	
NM-5018	SW 104th St: From 15th Ave SW to 17th Ave SW	Provide nonmotorized facility	Roadside	Non motorized	\$ 70,000	
NM-5020	8th Ave SW: From SW 108th St to SW 100th St	Provide non-motorized facility	Roadside	Non motorized	\$ -	YES
NM-5021	76th Ave S: From S 124th St to S 128th St	Provide nonmotorized facility	Roadside	Non motorized	\$ 120,000	
NM-9920	28th Ave SW: From SW Roxbury St to SW 102nd St	Construct asphalt shoulder (east side)	Roadside	Non motorized	\$ 200,000	
NM-9922	SW 112th St: From 16th Ave SW to 26th Ave SW	Construct asphalt shoulder (south side)	Roadside	Non motorized	\$ 530,000	
NM-9930	SW 112th St: From 1st Ave S to 4th Ave SW	Construct sidewalk (north side)	Roadside	Non motorized	\$ 150,000	
NM-9936	75th Ave S / S 122nd St: From Renton Ave S to 80th Ave S	Construct sidewalk (south side)	Roadside	Non motorized	\$ 380,000	
NM-9937	S 120th St: From 76th Ave S to 80th Ave S	Construct sidewalk (south side)	Roadside	Non motorized	\$ 230,000	
NM-9938	78th Ave S: From S 120th St to S 124th St	Construct sidewalk (east side)	Roadside	Non motorized	\$ 230,000	
NM-9939	76th Ave S: From S 120th St to S 124th St	Construct sidewalk (east side)	Roadside	Non motorized	\$ 240,000	
OP-INT-79	87th Ave S: From Stevens Ave NW/Taylor Pl NW to S 123rd Pl	Realign intersection	Traffic control devices	Intersection priority array	\$ 800,000	

King County Road Services: Transportation Needs Report 2016 Project List - Change Report
Public Review Draft, November 6th, 2016

Project Number	Project Location	Project Scope	Product Family	Category	Est. Cost	New Project?
Map Area: Woodinville (6)						
Corridor: 204th Ave NE						
GR-15-1	204th Ave NE: From NE Woodinville Duvall Rd to Snohomish County Line	Construct guardrail	Roadside	Guardrail	\$ 20,000	YES
NM-5001	Paradise Lake RD NE: From NE Woodinville Duvall Rd to Snohomish County Line	Provide nonmotorized facility	Roadside	Non motorized	\$ 660,000	
Corridor: Avondale Rd NE						
CP-15-5	Avondale Rd NE: From NE 133rd St to Woodinville Duvall Rd	Construct congestion relief measures	Roadway	Capacity	\$ 22,160,000	YES
OP-INT-99	Avondale Road NE & NE 165th St	Construct north and south left turn lanes and replace traffic signal	Traffic control devices	Intersection priority array	\$ 2,350,000	
RC-151	Avondale Rd NE: From NE 134th St to NE Woodinville Duvall Road	Reconstruct roadway	Roadway	Reconstruction	\$ 4,730,000	
Corridor: NE 124th St						
IPA-23	162nd Pl NE & NE 124th St	Install left-turn lanes on NE 124th St and traffic signal	Traffic control devices	Intersection priority array	\$ 2,250,000	YES
Corridor: NE 128th St						
ITS-16	NE 124th St: From State Route 202 to Avondale Road NE	Install cameras, vehicle detection, fiber optic communications, flood detection, and weather station	Traffic control devices	ITS	\$ 3,120,000	
Corridor: NE 132nd St						
BR-240A	Cottage Lake Creek Bridge: Bear Creek Rd/NE 132nd St at Cottage Lake Creek, east of Avondale Rd NE	Replace bridge	Bridges and structures	Bridge	\$ 1,890,000	
OP-RD-52	NE 128th St/Avondale Rd NE/NE 132nd St: From 181st Ave NE to NE 133rd St	Construct congestion relief measures	Traffic control devices	Capacity	\$ 35,120,000	
Corridor: NE 133rd St						
BR-333A	Bear Creek Bridge: NE 133rd St at Bear Creek, east of Bear Creek Rd NE	Replace bridge	Bridges and structures	Bridge	\$ 2,180,000	
Corridor: NE Novelty Hill Rd						
CP-15-8	NE Novelty Hill Rd: From NE 115th St to W Snoqualmie Valley Rd	Construct congestion relief measures	Roadway	Capacity	\$ 81,200,000	YES
ITS-35	NE Novelty Hill Rd: From 208th Ave NE to West Snoqualmie Valley Road	Upgrade, interconnect and synchronize signals	Traffic control devices	ITS	\$ 480,000	
CP-8	Novelty Hill Rd: From 197th Pl NE to 234th Pl NE	Construct congestion relief measures	Traffic control devices	Capacity	\$ 38,090,000	

King County Road Services: Transportation Needs Report 2016 Project List - Change Report
Public Review Draft, November 6th, 2016

Project Number	Project Location	Project Scope	Product Family	Category	Est. Cost	New Project?
Corridor: NE Woodinville Duvall Rd						
BR-1136B	Woodinville-Duvall Road Bridge: NE Woodinville Duvall RD 0.3 mile west of State Route 203	Replace bridge	Bridges and structures	Bridge	\$ 54,000,000	
BR-1136C	Woodinville-Duvall Road Bridge: NE Woodinville Duvall Rd 0.6 mile west of State Route 203	Replace bridge	Bridges and structures	Bridge	\$ 6,890,000	
BR-1136D	Woodinville-Duvall Road Bridge: NE Woodinville Duvall Rd 0.8 mile west of State Route 203	Replace bridge	Bridges and structures	Bridge	\$ 5,830,000	
BR-1136E	Woodinville-Duvall Road Bridge: NE Woodinville Duvall Rd 0.9 mile west of State Route 203	Replace bridge	Bridges and structures	Bridge	\$ 4,770,000	
CP-12	Woodinville-Duvall Rd & 171st-Avondale Rd	Construct congestion relief measures	Roadway	Capacity	\$ 11,270,000	
CP-15-7	NE Woodinville Duvall Rd & 194th Ave NE	Construct congestion relief measures	Roadway	Capacity	\$ 1,940,000	YES
CP-16	Woodinville-Duvall Rd & Avondale Rd NE	Construct congestion relief measures	Roadway	Capacity	\$ 8,750,000	
IPA-40	Woodinville-Duvall Rd & W. Snoqualmie Valley Rd	Intersection and drainage improvements	Traffic control devices	Intersection priority array	\$ 3,052,000	
ITS-13	NE Woodinville Duvall Rd, From 212th Ave NE to State Route 203	Install cameras, data stations, weather sensors, and dynamic message signs	Traffic control devices	ITS	\$ 3,735,000	
ITS-36	NE Woodinville-Duvall Rd: From 168th Ave NE to City of west of Duvall city limits	Install cameras, vehicle detection, fiber optic communications, dynamic message signs, and upgrade, interconnect and synchronize signals	Traffic control devices	ITS	\$ 3,840,000	
NM-5002	NE Woodinville-Duvall Rd: From Avondale Rd to State Route 203	Provide nonmotorized facility	Roadside	Non motorized	\$ 17,030,000	
RC-43	NE Woodinville Duvall Rd: From Old Woodinville-Duvall Rd to W Snoqualmie Valley Rd	Construct retaining wall to stabilize slope	Bridges and structures	VRS hotspot	\$ 550,000	

King County Road Services: Transportation Needs Report 2016 Project List - Change Report
Public Review Draft, November 6th, 2016

Project Number	Project Location	Project Scope	Product Family	Category	Est. Cost	New Project?
Corridor: West Snoqualmie Valley Rd NE						
CP-15-3	W Snoqualmie Valley Rd: From NE 124th St to NE Novelty Hill Rd	Construct congestion relief measures	Roadway	Capacity	\$ 6,780,000	YES
OP-INT-122	NE 124th St & West Snoqualmie Valley Rd NE	Construct north and south turn pockets and replace the signal	Traffic control devices	Intersection priority array	\$ 2,440,000	
ITS-18	W Snoqualmie Valley Rd NE: From NE Woodinville Duvall Road to Ames Lake Rd NE	Install vehicle detection, flood detection, cameras, and weather sensors (focus flood warning)	Traffic control devices	ITS	\$ 700,000	
RC-113	West Snoqualmie Valley Rd NE: From NE 124th St and NE Novelty Hill Rd	Reconstruct roadway 0.28 mile	Roadway	Reconstruction	\$ 440,000	
RC-150	West Snoqualmie Valley Rd NE: From Snohomish County Line to Woodinville-Duvall Rd	Construct retaining wall to prevent slides	Bridges and structures	VRS hotspot	\$ 3,450,000	
Corridor: Misc.						
BR-480A	Bear Creek Bridge: NE 116th St at Bear Creek, east of Avondale Rd NE.	Replace bridge	Bridges and structures	Bridge	\$ 1,570,000	
BR-5011	Walter Shults Bridge: NE 106th St at Lower Bear Creek , east of Avondale Rd NE	Replace bridge	Bridges and structures	Bridge	\$ 1,720,000	
DR-15-1	185th Ave NE, north of NE 179th St	Elevate roadway 1.5' and replace culvert	Drainage	Drainage	\$ 430,000	YES
DR-15-7	NE 124th St and 162nd Pl NE	Replace failing culvert	Drainage	Drainage	\$ 470,000	YES
DR-15-8	NE 124th St: From 570 Ft W of 164th Ave NE	Replace failing culvert	Drainage	Drainage	\$ 610,000	YES
GR-15-13	140th Pl NE and NE 172nd St	Construct guardrail	Roadside	Guardrail	\$ 170,000	YES
GR-15-17	Mink Rd NE: From Bear Creek Rd NE to NE Woodinville Duvall Rd	Construct guardrail	Roadside	Guardrail	\$ 50,000	YES
GR-15-21	NE Redmond Rd: From NE Novelty Hill Rd and NE 116th St	Construct guardrail	Roadside	Guardrail	\$ 330,000	YES
GR-15-22	222nd Way NE: From NE Woodinville Duvall Rd and NE 194th St	Construct guardrail	Roadside	Guardrail	\$ 30,000	YES
GR-15-26	232nd Ave NE: From NE 133rd St to Old Woodinville Duvall Rd	Construct guardrail	Roadside	Guardrail	\$ 40,000	YES
GR-15-4	236th Ave NE: From NE Woodinville Duvall Rd to NE 184th St	Construct guardrail	Roadside	Guardrail	\$ 50,000	YES
OP-INT-81	155th Ave NE & NE 146th Pl	Reconstruct intersection to improve sight distance	Traffic control devices	Intersection priority array	\$ 860,000	
NM-5026	172nd Ave NE: From NE 116th St to NE 138th St	Construct neighborhood pathway	Roadside	Non motorized	\$ 480,000	
NM-5027	171st/174th Ave NE: From Woodinville Duvall to NE 172nd Pl	Provide nonmotorized facility	Roadside	Non motorized	\$ 550,000	
OP-RD-18	NE 175 / NE 172 Pl: From 155th Pl NE to DU Rocher RD (174 NE)	Reconstruct roadway	Roadway	Reconstruction	\$ 2,960,000	
OP-RD-45	232nd Ave NE: From NE 142 St to Old Woodinville-Duvall Rd	Reconstruct roadway	Roadway	Reconstruction	\$ 4,250,000	
OP-RD-7	NE 165th St: From 179th Pl NE to 183rd Pl NE	Reconstruct roadway	Roadway	Reconstruction	\$ 6,050,000	
OP-RD-9	NE Old Woodinville-Duvall Rd: From Woodinville-Duvall Rd to Woodinville-Duvall Rd	Reconstruct roadway	Roadway	Reconstruction	\$ 5,190,000	
RC-48	NE 146th Pl: From state route 202 to 155th Ave NE	Construct retaining wall to stabilize slope	Bridges and structures	VRS hotspot	\$ 130,000	

King County Road Services: Projects Removed from 2012 Transportation Needs Report
Public Review Draft, November 6, 2015

Number	Location	Scope/Comments	Asset Type	Remove Note
100413	Avondale Road ITS Phase 2 From NE 132nd St to Woodinville-Duvall Road	Provide Intelligent Transportation System improvements	ITS	Completed
100415	Woodinville-Duvall Rd ITS, Phase I & II From 168th Ave NE to City of Duvall	Provide Intelligent Transportation System improvements	ITS	In construction
100992	Novelty Hill Rd From Redmond C/L to 244 Ave NE	Novelty Hill Road to 196th Avenue NE to NE Union Hill Road	Capacity	Completed
200106	Lake Alice Road at 339 Ave SE	Drainage improvement	Drainage	In construction
200108	Patterson Creek Bridge #180L On SE 28 St Crossing Patterson Creek	Bridge replacement	Bridge	Completed
200211	SE Newport Way at 16630	Culvert replacement	Drainage	Annexed/Incorporated
200308	May Creek Bridge #5005	Bridge replacement	Bridge	Completed
200313	SE Middle Fork Snoq River Rd at HSE 49040	Drainage improvement	Drainage	Completed
200413	Newport Way From 150 Ave SE to 152 Ave SE	Construct 1,000 linear feet of sidewalk	Pedestrian	Annexed/Incorporated
200511	SE Middle Fork Snoqualmie River Road From east of couplet to the campground	Reconstruct roadway	Reconstruction	In construction
200612	Issaquah-Hobart Rd SE from SE 111 St to SE 113 St	Add a two-way left turn lane and rumble strips.	Safety	Completed
200712	Miller River Bridge replacement	Bridge replacement	Bridge	Project replaced with alternate projects after road washout
200209	Preston Fall City / High Pt Way & SE 82nd St	Intersection improvements	Operational	Replaced in 2016 with roundabout (IPA-27)
300114	Renton Ave S From 68 Ave S to 74 Ave S	Add a sidewalk along the south side of the roadway	Pedestrian	In construction
300197	South Park Bridge #3179 RTID & 14th/16th Ave S.	Bridge replacement	Bridge	Completed
300214	78th Ave S From S 126 St To Renton Ave S	Add sidewalk to west side of roadway	Operational	Sidewalks present on east side of street
300215	Roxbury Street From 28 Ave SW to 30 Ave SW	Add sidewalk to south side of road	Pedestrian	In construction
300308	Peasley Canyon Rd S & Peasley Canyon Way S	Installed roundabout	Operational	Completed
300408	Military Rd & S 342nd St	Turn lane construction	Operational	Completed
300710	17th Ave SW From SW 100th St to SW 104th St	Sidewalk construction	Pedestrian	Completed
300810	Alvord T Bridge #3130	Bridge closure	Bridge	Completed
400210	Newaukum Creek Bridge #3040A	Bridge replacement	Bridge	Completed
400212	Kent-Kangley Rd, west of #26428	Drainage improvement	Drainage	Completed
400610	Fifteen Mile Creek Bridge #1384B	Bridge replacement	Bridge	Completed
400613	181 Ave SE & SE Covington Sawyer Rd	Add eastbound left turn lane at 181st Ave SE, improve sight distance widen shoulders	Safety	Completed
400713	SE Covington Sawyer Rd from 179 Pl SE to 181 Ave SE	Add eastbound left turn lane at 181st Ave SE, improve sight distance widen shoulders	Safety	Completed
3P-0012	S 360th St From Enchanted Pkwy S to 21 Pl S	Construct AC shoulder (North Side)	Pedestrian	Present facilities adequate for setting
3P-0115	204th Ave SE / SE 159th St From SE 156 St to 205 Ave SE	Construct AC shoulder (North Side)	Pedestrian	Present facilities adequate for setting
3P-9963	SE 218th Pl From 132 Ave SE To Soos Creek Elem	Construct AC shoulder (North Side)	Pedestrian	Present facilities adequate for setting
3P-9973	Covington-Sawyer Rd From 164 Pl SE to 180 Ave SE	Construct AC shoulder (South Side)	Pedestrian	Present facilities adequate for setting
BR-3056A	SE 408th St Bridge #3056A On SE 408th St Crossing drainage ditch	Construct short-span bridge	Bridge	Completed
BR-359C	Lake Dorothy Overflow Bridge #359C SE Lake Dorothy Rd Crossing Overflow	Construct short-span bridge	Bridge	Completed
BR-5009B	Snoqualmie Valley Rd Bridge #5009B	Construct short-span bridge. Included in W Snoqualmie Valley Rd Reconstruction Project.	Bridge	Under construction
BR-952A	Evans Creek Bridge #952A On NE Union Hill Rd Crossing Evans Creek	Replace bridge	Bridge	Completed
BR-999X	Cascade Scenic Highway Bridge #999X On Cascade Scenic Highway Crossing Miller River Slough	Construct short-span bridge	Bridge	Included as part of alternate projects being identified after Old Cascade Highway washout

King County Road Services: Projects Removed from 2012 Transportation Needs Report
Public Review Draft, November 6, 2015

Number	Location	Scope/Comments	Asset Type	Remove Note
CP-1	S 312th St Study From 28th Ave S to 51st Ave S (Federal Way Lead)	The City of Federal Way's Center Access Project has been closed, but the city still retains this road construction project in its plans.	Capacity	Not identified as a need after reassessment
CP-11	Juanita-Woodinville Way NE From 112th Ave NE to NE 145th St	Widen the existing road from NE 145th St to 112th Ave NE. Provide curb, gutter, and sidewalk, street lighting, and a traffic signal at NE 145th St.	Operational	Annexed/Incorporated
CP-13	Avondale Road NE Ph II From NE 155th St to NE 168th St	Widen roadway to 3 lanes including 2 eight foot shoulders and a walkway.	Operational	Combined into CP-15-5 Avondale Rd NE; NE 133 to W Duvall Rd. in 2016 TNR
CP-17	Issaquah-Fall City Rd Ph III	Widen roadway to 5 lanes with curb, gutter and sidewalks	Capacity	Annexed/Incorporated
CP-2	S 32nd Ave S Study From S 312th St to Military Road (Federal Way Lead)	The City of Federal Way's Center Access Project has been closed, but the city still retains this road construction project in its plans.	Capacity	Not identified as a need after reassessment
GR-106	SW 156th St From 91st Ave SW To Vashon Highway SW	Construct guardrail	Guardrail	Completed
GR-113	SE Lake Walker Rd From 316 Ave SE to W Lake Walker Dr SE	Construct guardrail	Guardrail	Completed
GR-120	S 128 St From 64 Ave S to 76 Ave S	Construct guardrail	Guardrail	Completed
GR-54	Lake Francis Rd From Cedar Grove Rd To SE 192nd St	Construct guardrail	Guardrail	Completed
GR-63	Cumberland-Kanaskat Rd From Retreat-Kanaskat Rd To SE 352nd St	Construct guardrail	Guardrail	Completed
GR-65	Cove Road From Westside Highway SW To Vashon Highway SW	Construct guardrail	Guardrail	Completed
GR-66	308th Ave SE From SE 87th Pl To SE 64th St	Construct guardrail	Guardrail	Completed
GR-67	Reinig Rd From Mill Pond Rd To 428th Ave SE	Construct guardrail	Guardrail	Completed
GR-69	Wax Orchard Rd SW From SW 220th St To Vashon Highway SW	Construct guardrail	Guardrail	Completed
GR-70	Beall Rd SW From SW Cemetery Rd To SW Bank Rd	Construct guardrail	Guardrail	Completed
GR-71	28th Ave S From S 348th St To SR 161	Construct guardrail	Guardrail	Completed
GR-73	Westside Highway SW From SW 144th St To SW 196th St	Construct guardrail	Guardrail	Completed
GR-75	Mt Si Rd From North Bend city limits To End of route	Construct guardrail	Guardrail	Completed
GR-76	Westside Highway SW From SW 220th St To SW 196th St	Construct guardrail	Guardrail	Completed
GR-79	Cemetery Rd From Westside Highway SW To Vashon Highway SW	Construct guardrail	Guardrail	Completed
GR-82	384th Ave SE From SE 92ND St To North Bend Way	Construct guardrail	Guardrail	Completed
GR-83	Point Robinson Rd From Dockton Rd SW To End of route	Construct guardrail	Guardrail	Completed
GR-84	SE 384th St From 160th Pl SE To 212th Ave SE	Construct guardrail	Guardrail	Completed
GR-93	SE 200th St From 276th Ave SE To 244th Ave SE	Construct guardrail	Guardrail	Completed
GR-97	91st Ave SW From SW 156th St To Gorsuch Rd	Construct guardrail	Guardrail	Completed
HAL-14	140th Ave SE & SE Petrovitsky Rd	Widen all legs of intersection	Safety	Reassigned as a maintenance activity
HAL-2	Military Rd S & S 320th St	East bound, right turn lane (developer project). Advance east bound signal head by county	Safety	Completed
HAL-22	34 Ave S & S. 288 St	Intersection operational improvement	Safety	No longer meets signal warrants
HAL-26	Avondale Road NE & Woodinville-Duvall Rd	Widen the intersection for additional turn lanes, signal improvements, illumination, curb, gutter, sidewalks	Safety	ITS completed, monitoring for re-assessment in 2016
HAL-3	Peasley Canyon Rd & S 321st St	West bound right turn lane. West bound advanced signal head.	Safety	Completed

King County Road Services: Projects Removed from 2012 Transportation Needs Report
Public Review Draft, November 6, 2015

Number	Location	Scope/Comments	Asset Type	Remove Note
HAL-32	Issaquah Fall City Rd & Klahanie Dr SE	Convert signal to protected only east bound left turn phasing. Dual left turn lane or extending existing left turn lane.	Safety	Annexed/Incorporated
HAL-35	194th Ave NE & Woodinville-Duvall Rd	East bound left turn lane.	Safety	Not identified in 2013 analysis as a need
HAL-38	Avondale Road NE & NE 165th St	Add north and southbound left turn lanes	Safety	Addressed via completion of Avondale ITS Phase II
HAL-43	164th Ave SE & SE 128th St	Convert SE 128th Street to 3-lane section from Renton centerline (158th Ave SE) to 158th Ave SE	Safety	Completed
HAL-59	SE 176th St & SE Petrovitsky Rd	Eastbound dual lefts and phasing	Safety	Not identified in 2013 analysis as a need
HAL-61	160th Ave SE & SE 128th St	Convert SE 128th Street to 3-lane section from Renton centerline (158th Ave SE) to 158th Ave SE	Safety	Completed
HAL-72	Kent Kangley Rd & Landsburg Rd SE	Intersection operational improvement	Safety	Not identified in 2013 analysis as a need
HAL-75	Kent-Kangley & Retreat-Kanaskat Rd	Realine eastbound and northbound approaches, roundabout	Safety	Not identified in 2013 analysis as a need
HAL-77	Trilogy Pkwy & NE Novelty Hill Rd	Construct roundabout	Safety	ITS improvements were made; monitoring for improvements
HAL-78	Avondale Rd & NE 128th Way	Design ultimate improvement	Safety	ITS improvements were made; monitoring for improvements
HAL-81	196th Ave SE & SE Petrovitsky Rd	Construct roundabout	Safety	Not identified in 2013 analysis as a need
HAL-83	212th Ave SE & SE 400 St	Construct roundabout	Safety	Not identified in 2013 analysis as a need
HAL-85	175 Ave SE & SE 128 St	Convert SE 128th Street to a three-lane section.	Safety	Not identified in 2013 analysis as a need
HAL-86	Novelty Hill Rd & 208 Ave NE	Safety improvement incorporated into Novelty Hill Phase II	Safety	ITS improvements were made; monitoring for improvements
HAL-87	208th Ave NE & Union Hill Rd	Construct roundabout	Safety	Not identified in 2013 analysis as a need
HAL-90	Lake Kathleen Rd SE & SE 128th St	Convert SE 128th Street to a three-lane section.	Safety	Not identified in 2013 analysis as a need
HAL-91	Novelty Hill Rd & 206th Ave NE	Safety improvement incorporated into Novelty Hill Phase II	Safety	Included in Novelty Hill Road Phase II project
HAL-92	Military Rd S & S 352 St	Add northbound and southbound left turn lanes	Safety	Not identified in 2013 analysis as a need
HARS-12	Novelty Hill Rd from 206 Ave NE to 208 Ave NE	Construct Novelty Hill Road Phase II	Safety	Included in Novelty Hill Road Phase II capacity project in 2016 TNR
ITS-30	Lake Holm Rd ITS From 148th Ave SE to Auburn Black Diamond Rd.	Provide Intelligent Transportation System improvements - could include a speed warning system	ITS	Completed
ITS-31	Issaquah-Fall City Rd ITS From Issaquah City Limits to SR-202	Provide Intelligent Transportation System improvements	ITS	Annexed/Incorporated
NM-0107	178th Ave NE From NE 131 St to NE 136 St	Construct sidewalk (West Side)	Pedestrian	Present facilities adequate for setting
NM-0109	154th Ave SE From SE 39 St to SE 42 St	Construct sidewalk (West Side)	Pedestrian	Annexed/Incorporated
NM-0110	1st Ave S From S 102 St to S 108 St	Construct shoulder (West Side)	Pedestrian	Present facilities adequate for setting
NM-0111	NE 145th St From 160 Pl NE to 168 Ave NE	Construct shoulder (North Side)	Pedestrian	Present facilities adequate for setting
NM-4009	Newport Way From 13800 block(Bell. C/L) to 153 Ave SE	Improve pathway -- North Side and South Side	Pedestrian	Annexed/Incorporated
NM-4010	Newport Way From 152 Ave SE to 161 Ave SE	Improve pathway (South Side)	Pedestrian	Annexed/Incorporated
NM-4036	SE 224th St From 172 Ave SE to 180 Ave SE	Widen walkway	Pedestrian	Present facilities adequate for setting
NM-4054	Covington-Sawyer Rd From 188 Ave SE to 192 Pl SE	Construct walkway (North Side)	Pedestrian	Present facilities adequate for setting
NM-4065	276th Ave SE From SE 231 St to 300' north	Construct pathway (West Side)	Pedestrian	Present facilities adequate for setting
NM-4071	22nd Place S From Des Moines Mem. Dr. S to Burien City Limits	Improve walkway	Pedestrian	Present facilities adequate for setting
NM-4079	Cemetery Rd From Beall Rd SW to # 9303	Improve pathway (South Side)	Pedestrian	Combined with #300413
NM-4080	Vashon Island Hwy From #20120 to Metro bus stop	Construct separated pathway (East Side)	Pedestrian	METRO Transit project need
NM-5003	Ames Lake-Carnation Rd From Union Hill Rd To NE 80 St	Provide nonmotorized facility	Pedestrian	Present facilities adequate for setting

King County Road Services: Projects Removed from 2012 Transportation Needs Report
Public Review Draft, November 6, 2015

Number	Location	Scope/Comments	Asset Type	Remove Note
NM-5004	Union Hill Rd From 238 Ave NE To Ames Lake-Carnation Rd	Provide nonmotorized facility	Pedestrian	Present facilities adequate for setting
NM-5009	212th Ave SE From SE 384 St To SE 358 St	Provide nonmotorized facility	Pedestrian	Present facilities adequate for setting
NM-5011	Enumclaw-Franklin Rd From Franklin-Cumberland To SR-169	Provide nonmotorized facility	Pedestrian	Present facilities adequate for setting
NM-5013	284th Ave SE From SE 416 St To SR-410	Provide nonmotorized facility	Pedestrian	Present facilities adequate for setting
NM-5016	SW 104th St From 17 Ave SW To 28 Ave SW	Provide nonmotorized facility	Pedestrian	Present facilities adequate for setting
NM-5019	15th Ave SW - east side From SW 106 St To SW 107 St	Provide nonmotorized facility	Pedestrian	Present facilities adequate for setting
NM-5024	112 Pl NE From Bothell south city limits to 112 Lane NE	Provide nonmotorized facility	Pedestrian	Annexed/Incorporated
NM-5028	176th Ave NE From Woodinville-Duvall Rd To NE 195 St	Construct neighborhood pathway	Pedestrian	Present facilities adequate for setting
NM-5029	168th Ave NE From NE 143 Pl To NE 140 St	Construct neighborhood pathway	Pedestrian	Present facilities adequate for setting
NM-5030	Allen Rd (148 SE) North Side From 146 Ave SE To SE 36 St	Provide nonmotorized facility	Pedestrian	Annexed/Incorporated
NM-5032	SE 240th St From 196 Ave SE To SR-18	Provide nonmotorized facility	Pedestrian	Present facilities adequate for setting
NM-5033	SE 224th St From 132 Ave SE To 148 Ave SE	Provide nonmotorized facility	Pedestrian	Present facilities adequate for setting
NM-5035	Kent-Black Diamond Rd From SR-18 To SE Lake Holm Rd	Provide nonmotorized facility	Pedestrian	Present facilities adequate for setting
NM-5036	SE 296th / 148 Ave SE From SR-18 To S.I.R.	Provide nonmotorized facility	Pedestrian	Present facilities adequate for setting
NM-5039	196th Ave SE From SE 240 St To SE 232 St	Provide nonmotorized facility	Pedestrian	Present facilities adequate for setting
NM-5041	Mill Pond Rd From SR-202 To Reinig Rd	Provide nonmotorized facility	Pedestrian	Annexed/Incorporated
NM-5042	Carnation Farm Rd From NE 80 St To SR-203	Provide nonmotorized facility	Pedestrian	Present facilities adequate for setting
NM-5045	Kelly Rd From Cherry Valley Rd To Big Rock Rd	Provide nonmotorized facility	Pedestrian	Present facilities adequate for setting
NM-5047	244th Ave SE From SR-18 To SE 196 St	Provide nonmotorized facility	Pedestrian	Present facilities adequate for setting
NM-5052	Retreat-Kanasket Rd From Kent-Kangley Rd To Kanasket-Kangley Rd	Provide nonmotorized facility	Pedestrian	Present facilities adequate for setting
NM-5053	SW 240th St / Bay View Dr From Vashon Hwy SW To Burton Acres Park Entrance	Provide nonmotorized facility	Pedestrian	Present facilities adequate for setting
NM-5060	Preston-Fall City Rd From Regional Trail Crossing to SR-202	Provide nonmotorized facility	Pedestrian	Present facilities adequate for setting
NM-5061	Preston-Fall City Rd From Regional Trail Crossing To I-90	Provide nonmotorized facility	Pedestrian	Duplicative project
NM-5062	West Snoqualmie Valley Rd From Woodinville-Duvall Rd To Novelty Hill Rd	Provide nonmotorized facility	Pedestrian	Present facilities adequate for setting
NM-5063	West Snoqualmie Valley Rd From Novelty Hill Rd To Carnation Rd	Provide nonmotorized facility	Pedestrian	Present facilities adequate for setting
NM-5064	Mt Si Rd From North Bend city limits To Mt. Si Trail	Provide nonmotorized facility	Pedestrian	Present facilities adequate for setting
NM-5065	Mt Si Rd From Mt. Si Trail To NW Corner of Section 8	Provide nonmotorized facility	Pedestrian	Present facilities adequate for setting
NM-5066	Bear Creek Rd From Avondale Rd To Mink Rd	Provide nonmotorized facility	Pedestrian	Present facilities adequate for setting
NM-5067	Bear Creek Rd From Mink Rd To NE 133 St	Provide nonmotorized facility	Pedestrian	Present facilities adequate for setting
NM-5070	Peter Grubb Rd / SE 232 St From SE 224 St To 196 Ave SE	Provide nonmotorized facility	Pedestrian	Present facilities adequate for setting
NM-5071	SE 232 St From 196 Ave SE St To SR-18	Provide nonmotorized facility	Pedestrian	Present facilities adequate for setting
NM-9901	88th Ave NE From NE 198 St To NE 205 St	Construct shoulder (East Side)	Pedestrian	Annexed/Incorporated
NM-9903	152nd Pl NE / 158 Ave NE From NE 160 St To NE 165 St	Construct gravel shoulder (West Side)	Pedestrian	Present facilities adequate for setting
NM-9904	148th Ave NE From NE 154 St To NE 167 St	Construct gravel shoulder (East Side)	Pedestrian	Present facilities adequate for setting
NM-9913	168th Ave NE From NE 143 St To NE 145 St	Construct shoulder (West Side)	Pedestrian	Present facilities adequate for setting
NM-9915	Big Rock Rd From Batten Rd NE to 296 Ave NE	Construct shoulder (North Side)	Pedestrian	Present facilities adequate for setting
NM-9916	322nd Ave NE From NE Big Rock Rd to NE 130 St	Construct gravel shoulder (West Side)	Pedestrian	Present facilities adequate for setting
NM-9917	NE 50th St From 192 Pl NE to Sahalee Way NE	Construct shoulder (South Side)	Pedestrian	Present facilities adequate for setting
NM-9918	Allen Rd From 13800 block (city limit) to 146 Ave SE	Construct sidewalk (North Side)	Pedestrian	Annexed/Incorporated
NM-9928	11th Ave SW From SW 102 St to SW 106 St	Construct shoulder (East Side)	Pedestrian	Present facilities adequate for setting
NM-9941	308th Ave SE From SE 64 St to SE 87 Pl	Construct gravel shoulder (East Side)	Pedestrian	Present facilities adequate for setting
NM-9942	428th Ave SE From SE Reinig Rd to SE 108 St	Construct shoulder (West Side)	Pedestrian	Present facilities adequate for setting

King County Road Services: Projects Removed from 2012 Transportation Needs Report
Public Review Draft, November 6, 2015

Number	Location	Scope/Comments	Asset Type	Remove Note
NM-9945	69th Ave S / S 125 St From S 128 St to 70 Pl S	Construct sidewalk (South Side)	Pedestrian	Present facilities adequate for setting
NM-9958	SE 149th St / 442 Ave SE From 437 Pl SE to 443 Ave SE	Construct shoulder (North Side)	Pedestrian	Present facilities adequate for setting
NM-9959	107th Ave SW From SW 228 St to SW 232 St	Construct shoulder (West Side)	Pedestrian	Present facilities adequate for setting
NM-9965	SE 183rd St From 142 Ave SE to 147 Ave SE	Construct sidewalk (South Side)	Pedestrian	Present facilities adequate for setting
NM-9966	Lake Youngs Pipeline Pathway From vicinity of 155 Pl SE	Construct walkway	Pedestrian	King County Parks Project, in City of Seattle
NM-9967	SE 216th Way From SR-169 to Dorre Don Way SE	Construct sidewalk (East Side)	Pedestrian	Present facilities adequate for setting
NM-9968	Cedar Falls Rd SE From near Rattlesnake Lake	Construct shoulder (West Side)	Pedestrian	Present facilities adequate for setting
NM-9974	Covington-Sawyer Rd From east of 181 Ave SE	Construct shoulder (North Side)	Pedestrian	Present facilities adequate for setting
NM-9976	38th Ave S From S 344 St to Fishing Access Rd	Construct shoulder (West Side)	Pedestrian	Present facilities adequate for setting
NM-9983	200th Ave SE From SE 400 St to 0.17 miles north	Construct gravel shoulder (West Side)	Pedestrian	Present facilities adequate for setting
NM-9984	Mink Rd From Bear Creek Rd To Woodinville-Duvall Rd	Pave shoulders	Pedestrian	Present facilities adequate for setting
NM-9985	High Point Regional Trail from Trail intersection w/High Point Way (W) to 300 Ave SE (E)	Trail construction on road shoulder	Pedestrian	Completed
OP-INT-102	148th Ave SE & SE 308th St	Improve sight distance	Operational	Reassigned as a maintenance activity
OP-INT-105	Military Rd S & S 374 St	Provide two way left turn lane	Operational	No longer meets signal warrants
OP-INT-116	Military Rd & S 320th St	Add eastbound right turn lane.	Operational	Completed
OP-INT-119	168th Ave SE & SE 128th St	Add turn lanes on SE 128th St	Operational	Completed
OP-INT-121	Kent-Kangley Rd & Landsburg Rd	Traffic Signal or roundabout	Safety	Included in IPA-22 in 2016 TNR SE Kent Kangley Rd & Landsburg Rd SE
OP-INT-123	Issaquah-Hobart Rd & Cedar Grove Rd	Study	Operational	Studies funded by operational, not capital funding
OP-INT-125	238th Ave NE & Union Hill Rd	Intersection operational improvement	Operational	No longer meets signal warrants
OP-INT-71	Bear Creek Rd & Mink Rd	Improve sight distance--realign intersection	Operational	Reassigned as a maintenance activity
OP-INT-74	218th Ave SE & Green Valley Rd	Reconstruct intersection	Operational	No longer meets signal warrants
OP-INT-76	Renton Ave S & 76 Ave S	Turn channels - north & south legs	Operational	No longer meets signal warrants
OP-INT-78	16th Ave SW & SW 106 St	Provide left turn lane--pedestrian crossing signals	Operational	Reassigned as a maintenance activity
OP-INT-84	Newport Way & 164 Ave SE	Traffic signal--turn channels, all legs	Operational	Annexed/Incorporated
OP-INT-85	Petrovitsky Rd SE & SE 184 St Crossing	Pedestrian crossing signals	Operational	Completed
OP-INT-90	196th Ave SE & SE 192 St	Reconstruct intersection, improve sight distance, turn channels	Operational	Reassigned as a maintenance activity
OP-INT-91	Stampede Pass Rail & Hudson Rd RR Crossing	Reconstruct intersection, traffic signal	Operational	Not identified as a need after reassessment
OP-INT-93	Kanaskat-Kangley Rd & Cumberland-Kanaskat Rd	Realign intersection	Operational	Reassigned as a maintenance activity
OP-INT-98	SE 235th Pl & 244 Ave SE	Improve sight distance	Operational	No longer meets signal warrants
OP-RD-11	Issaquah-Fall City Rd/Duthie Hill Rd From Klahanie Blvd To 272 Pl SE	Provide left turn lane	Operational	Annexed/Incorporated
OP-RD-2	Roxbury St From 4th Ave SW to 30th Ave SW	Widen from 4 to 5 lanes; improve sight distance	Operational	Not identified as a need after reassessment
OP-RD-20	Newport Way From 138 Ave SE To Eastgate Park Entrance	Provide left turn lane	Operational	Annexed/Incorporated
OP-RD-27	164th Ave SE From SE 240 St To SE 248 St	Pave shoulders	Operational	Reassigned as a maintenance activity
OP-RD-3	Military Rd S From S 340 St to S 342 St	Provide two way left turn lane at S 342 St	Operational	Completed
OP-RD-38	436 Ave SE/Cedar Falls Rd From I-90 To Wilderness Rim	Realign roadway	Operational	Not identified as a need after reassessment
OP-RD-40	NE 80th St From West Snoqualmie Valley Rd To Ames Lake Rd	Reconstruct roadway	Operational	Completed
OP-RD-46	Stossell Creek Way From Swan Mill Road to the Snohomish County Line	Environmental improvements to road to improve habitat and reduce maintenance costs	Operational	Not identified as a need after reassessment
OP-RD-50	1st Ave S. & Seattle C/L to Burien C/L	Provide curb, gutter, sidewalk, drainage and landscaping	Pedestrian	Present facilities adequate for setting
OP-RD-53	Issaquah-Hobart Rd From Issaquah City Limits to May Valley Rd	Study	Operational	Studies funded by operational, not capital funding

King County Road Services: Projects Removed from 2012 Transportation Needs Report
Public Review Draft, November 6, 2015

Number	Location	Scope/Comments	Asset Type	Remove Note
OP-RD-8	Avondale Road Phase III From NE 133rd St To NE 155th St	Widen to three lanes, construct bridge	Operational	Combined with Avondale Rd NE; NE 133 to W Duvall Rd
RC-15	Vashon Highway Seawall From 115th Ave SW To SW 240th Pl	Perform feasibility studies, preliminary engineering, environmental documents, design	Reconstruction	Completed
RC-16	Reinig Rd From Mill Pond Rd To 396th Dr SE	Armor shoulders	Reconstruction	Annexed/Incorporated
RC-27	Quartermaster Drive Seawall From 1/4 mi. east of Monument Rd SW To Dockton Rd SW	Replace seawall	Reconstruction	Completed
RC-37	Mill Pond Rd From SE Stearns Rd to SE Reinig Rd	Armor shoulders	Reconstruction	Annexed/Incorporated
RC-49	58th Place S./56th Place S. From West Valley Rd to West Valley Rd	Major roadwork needed, possible re-alignment	Reconstruction	Permanent road closure
RC-53	Mud Mountain Rd at 29000 block	High wall needed	Reconstruction	Permanent road closure
SW-10	Novelty Hill Road & Redmond Road	Intersection operational improvement	Operational	Reassigned as a maintenance activity
SW-11	188 Ave SE & Covington-Sawyer Road	Intersection operational improvement	Operational	Reassigned as a maintenance activity
SW-17	148th Ave SE & SE 208th St	Intersection operational improvement	Operational	Reassigned as a maintenance activity
SW-18	Petrovitsky & 162nd Pl SE	Intersection operational improvement	Operational	Reassigned as a maintenance activity
SW-2	Vashon Highway & SW Bank Rd	Intersection operational improvement	Operational	Reassigned as a maintenance activity
SW-27	Auburn-Black Diamond & Green Valley Rd	Intersection operational improvement	Operational	No longer meets signal warrants
SW-53	48th Ave S & S 288th St	Intersection operational improvement	Operational	Reassigned as a maintenance activity
SW-55	Rainier Ave S & Lakeridge Dr S	Intersection operational improvement	Operational	No longer meets signal warrants
SW-57	Military Rd & S 360th St	Intersection operational improvement	Operational	Included in 2016 TNR as IPA-25
SW-58	164th Pl SE & SE Covington-Sawyer Rd	Intersection operational improvement	Operational	Included in 2016 TNR as IPA-33
SW-61	28th Ave SE & S 360th St	Intersection operational improvement	Operational	No longer meets signal warrants
SW-91	140 Ave SE & SE 184 St (Carriage Crest Elementary School)	Install traffic signal	Operational	School District need, above KC Road Standard
SW-94	43 Pl S & S 288 St (T J High School)	Intersection operational improvement	Operational	School District need, above KC Road Standard

Arterial Functional Classification

Change locations

King County Comprehensive Plan

Public Review Draft

November, 2015

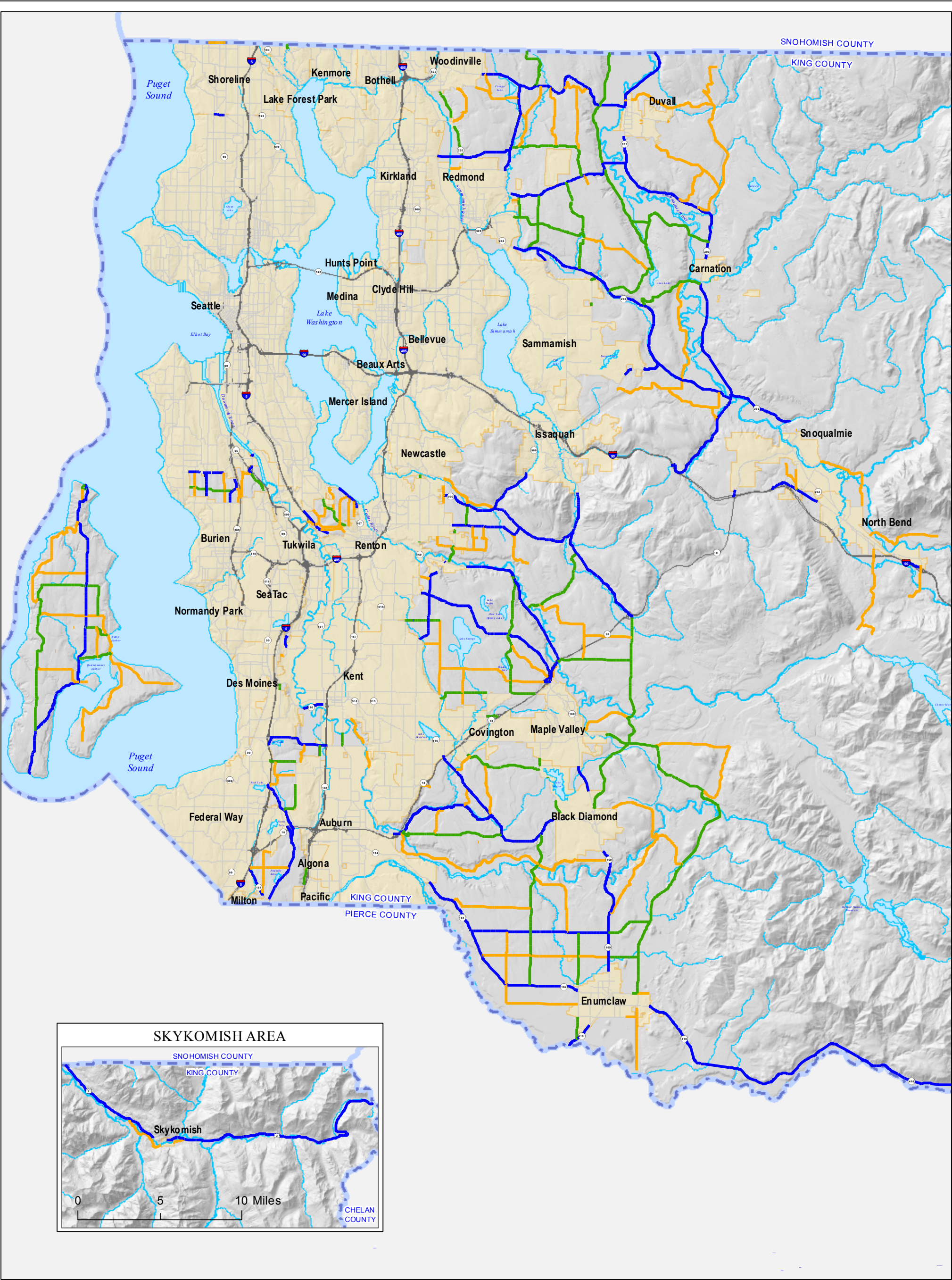
King County Road Services Division

Arterial Functional Classification Change Locations

Public Review Draft

November, 2015

1. Deleted due to City of Sammamish annexation (Klahanie):
 - a. SE Klahanie Boulevard (Issaquah-Pine Lake Road to Issaquah-Fall City Road)
 - b. Issaquah-Fall City Road (Issaquah C/L to SE 32nd St)
 - c. 256th Ave. SE (SE Klahanie Blvd to SE 32nd St)
2. Deleted due to City of Bothell annexation:
 - a. SR-522 (approx. 84th Ave NE to 91st Ave NE)
 - b. Juanita-Woodinville Way (NE 145th St to I-405)
 - c. NE 160th St (I-405 to 124th Ave NE)
 - d. 124th Ave NE (approx. NE 164th St to NE 166th St)
 - e. Juanita-Woodinville Way (approx. NE 160th St to NE 163rd St)
 - f. 112th Ave NE (Juanita-Woodinville Way to approx. NE 162nd St)
 - g. 112th Ave NE (approx. NE 162nd St to NE 170th St)
 - h. 130th PI NE (approx. 133rd Ave NE to NE 200th PI)
3. Deleted due to City of Auburn annexation:
 - a. S. 277th St (approx. 83rd Ave S to approx. G St NE)
4. Deleted due to City of Bellevue annexation:
 - a. 150th /148th Ave SE (I-90 to approx. Highland Dr.)
 - b. SE Newport Way (Somerset Blvd to approx. SE 43rd St)
 - c. 164th Ave SE (SE Newport Way to SE 46th St)
 - d. SE Allen Road (SE Newport Way to SE 38th St)
5. Deleted due to City of Renton annexation:
 - a. SE 164th St (128th Ave SE to approx. 132nd PL SE)
 - b. SR-169 (149th Ave SE to Renton C/L)
6. Deleted due to City of Seattle annexation:
 - a. Airport Way S (approx. S 95th PI to approx. S 90th PI)
7. Technical correction:
 - a. SE Green River Road (approx. SE 281 St to SE 292nd St) – Collector arterial
8. Classification changes:
 - a. 204th Ave NE/Paradise Lake Rd (NE Woodinville-Duvall Road to County line) – Change from Collector to Minor Arterial
 - b. 424th Ave SE (North Bend City limits, south to SE 140th St, 432nd Ave SE, to SE North Bend Road) – Change from Collector Arterial to neighborhood collector(local).

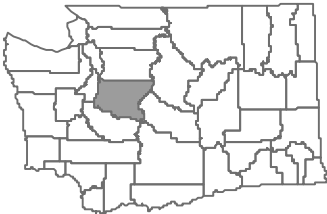


2016 King County Arterial Functional Classification



Unincorporated King County Roads

- Principal
- Minor
- Collector



The information included on this map has been compiled by King County staff from a variety of sources and is subject to change without notice. King County makes no representations or warranties, express or implied, as to accuracy, completeness, timeliness, or rights to the use of such information. This document is not intended for use as a survey product. King County shall not be liable for any general, special, indirect, incidental, or consequential damages including, but not limited to, lost revenues or lost profits resulting from the use or misuse of the information contained on this map. Any sale of this map or information on this map is prohibited except by written permission of King County.