

Shorelines of the State

King County, Washington

Current King County Shoreline Jurisdiction

- Open Water
- 200 ft Jurisdiction

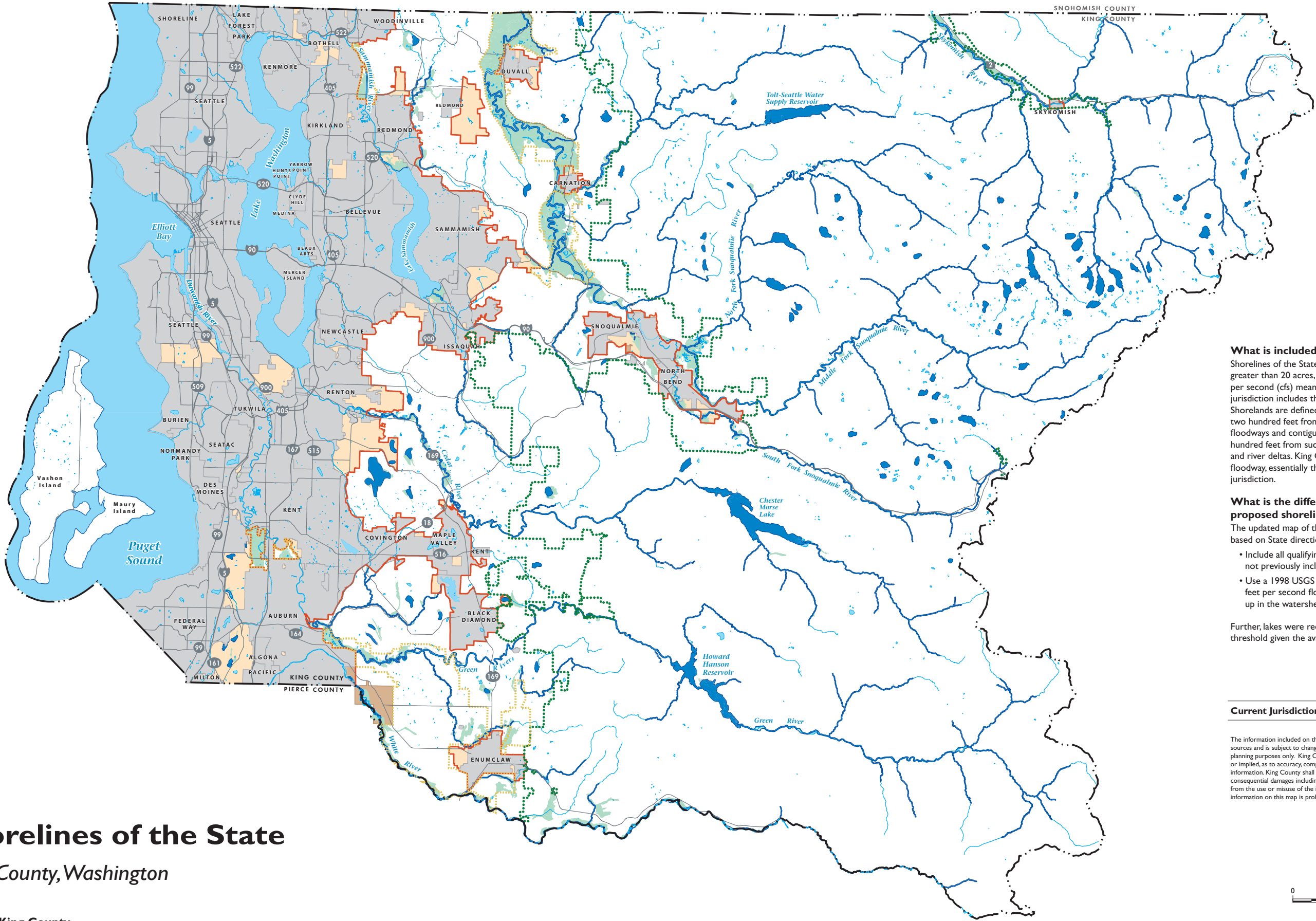
- Incorporated Areas
- Potential Annexation Areas
- Associated Floodplains and Wetlands

- Tribal Lands in Unincorporated King County
- Other Water Bodies

- Urban Growth Boundary
- King County Boundary
- Other Major Streams

- Agricultural Production District Boundary
- Forest Production District

Produced by: GIS, Visual Communications & Web Unit (KCIT-DNRP)
File Name: 1301_3022L_SMPjurisMAPai LPRE



What is included in the shoreline jurisdiction?
Shorelines of the State include all marine shorelines, lakes greater than 20 acres, and rivers and streams with 20 cubic feet per second (cfs) mean annual flow or greater. The shoreline jurisdiction includes these water bodies and shorelands. Shorelands are defined as those areas extending landward for two hundred feet from the ordinary high water mark, floodways and contiguous floodplain areas landward two hundred feet from such floodways, and all associated wetlands and river deltas. King County currently includes the zero-rise floodway, essentially the 100-year floodplain, in its shoreline jurisdiction.

- What is the difference between current and proposed shoreline jurisdiction?**
The updated map of the shoreline jurisdiction was developed based on State direction to:
- Include all qualifying shorelines on federal lands (these were not previously included)
 - Use a 1998 USGS study to identify the location of 20 cubic feet per second flow points on streams (these are higher up in the watershed than most current points)

Further, lakes were reevaluated in relation to the 20-acre threshold given the availability of new data about lake size.

	M I L E S		
	Lake	River/ Stream	Marine
Current Jurisdiction	230	1,696	51

The information included on this map has been compiled by staff from a variety of sources and is subject to change without notice. This map has been developed for planning purposes only. King County makes no representations or warranties, express or implied, as to accuracy, completeness, timeliness, or rights to the use of such information. King County shall not be liable for any general, special, indirect, incidental, or consequential damages including, but not limited to, lost revenues or lost profits resulting from the use or misuse of the information contained on this map. Any sale of this map or information on this map is prohibited except by written permission of King County.

