

2020 STI Surveillance Data and COVID-19

STI case numbers in 2020 may be affected by the COVID-19 pandemic. The first stay at home orders for King County were issued near the end of quarter 1 and any observed decreases in STIs maybe be from changes in STI screening and/or changes in sexual behavior during the pandemic.

STI Case Counts

	2021		2022	
	2021Q2	YTD	2022Q2	YTD
Gonorrhea (GC)*	917	1913	1056	2194
GC: MSM	406	800	531	1159
Urethral GC	110	208	124	275
Rectal GC	197	420	260	570
Pharyngeal GC	199	372	317	664
GC: Women^	249	528	240	471
GC: MSW^	72	172	21	127
GC: Transgender‡	28	49	40	68
Chlamydia (CT)*	1842	3881	1712	3631
CT: Men	856	1763	865	1773
CT: Women	978	2093	838	1838
CT: Transgender‡	6	14	7	16
Total Syphilis (all stages)*	305	615	414	816
Primary and secondary	142	268	182	329
Early latent	94	191	103	241
Late + unk duration	69	155	126	240
Early syphilis: MSM	151	290	159	323
Early syphilis: Women	26	58	38	86
Early syphilis: MSW	21	34	36	65
Early syphilis: Transgender‡	3	5	11	16
Congenital syphilis	0	1	3	6

*Column may not equal total due to missing gender or sexual preference data.
^ Genital tract infection
‡ Transgender identity relies on reporting from medical providers and Partner Services Interviews. Data presented here are a potential undercount.

	2021		2022	
	2021Q1	YTD	2022Q1	YTD
Total†	46	46	49	49
MSM	30	30	30	30
Women	6	6	11	11
MSW	2	2	3	3
Transgender‡	3	3	1	1

* Data shown for prior quarter due to reporting delay.
† Column may not equal total due to missing sexual preference data.
‡ Transgender identity relies on review of information documented in medical records and obtained through Partner Services Interviews. Data presented here are a potential undercount.

Trends in STI Morbidity

Figure 2: Quarterly King County STI morbidity among MSM**

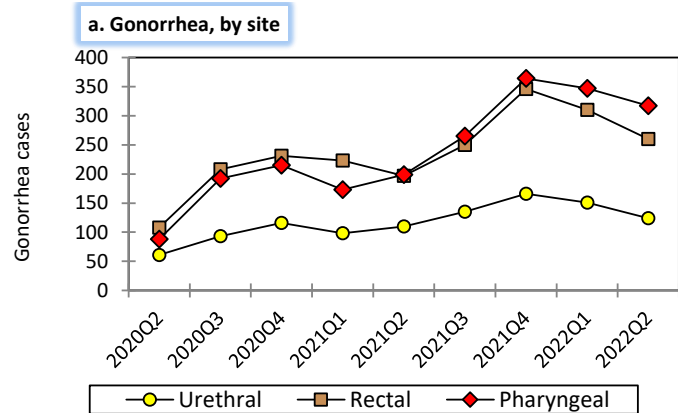
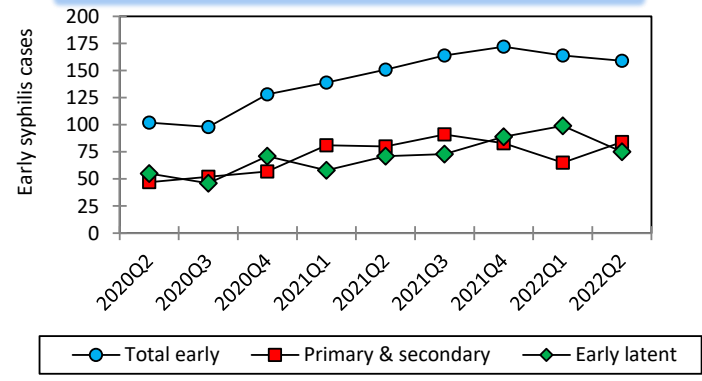
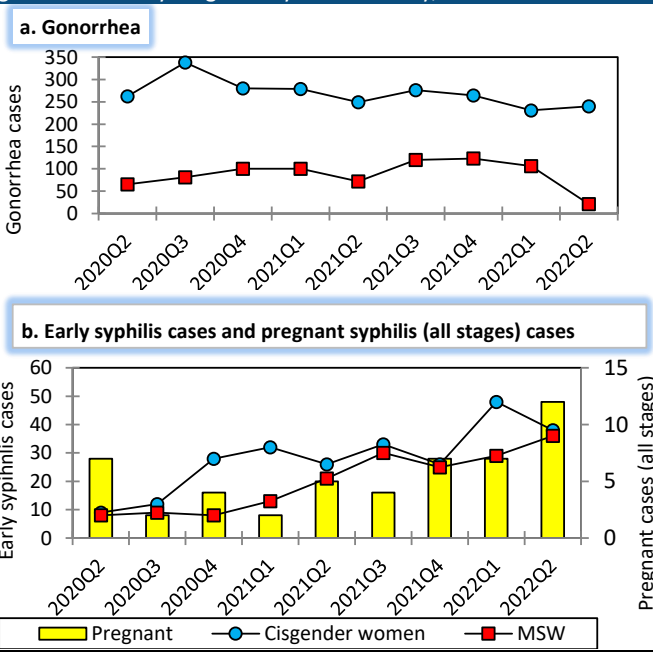
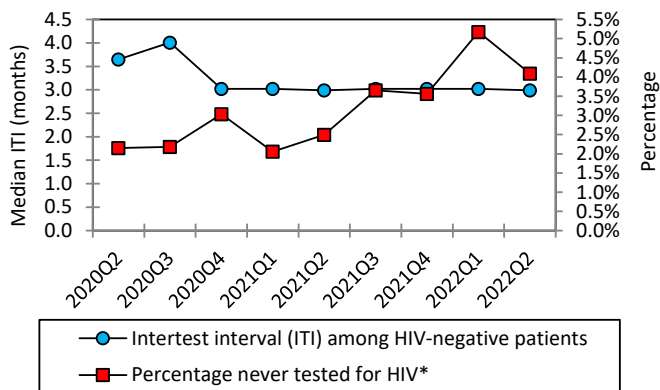


Figure 1: Quarterly King County STI morbidity, women and MSW**



**Footnote: Chlamydia case data on gender of sex partners and anatomic site of infection are incomplete for these time periods. For this reason chlamydia cases are not shown by population.

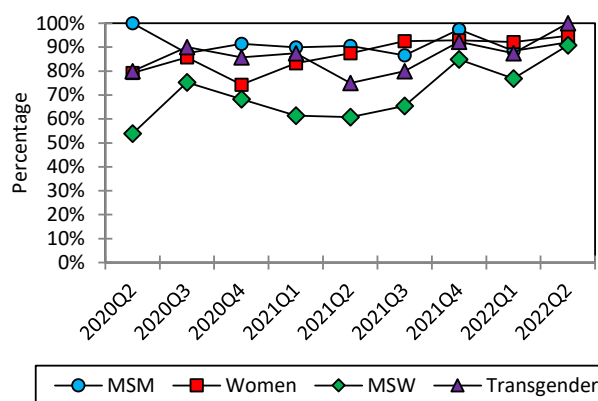
Figure 3: HIV testing among PHSKC Sexual Health Clinic patients, MSM (note different scales)



* Denominator includes patients who reported never testing or negative/unknown results

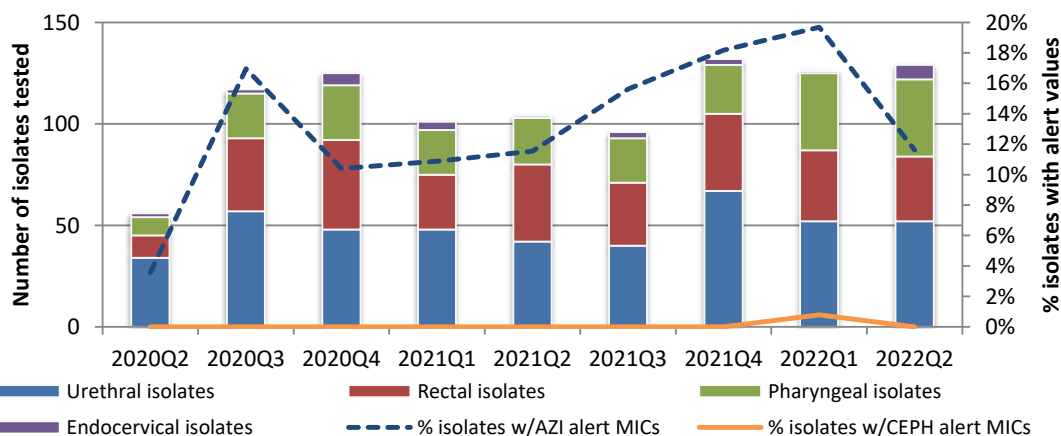
HIV testing should be performed annually on low-risk MSM and quarterly on high-risk MSM^a.

Figure 4: Percentage of King County residents with a bacterial STI tested for HIV (excludes HIV+ residents)



Anyone diagnosed with a bacterial STI should be tested for HIV.

Figure 5: Percentage of SURRG^b isolates with alert values for cephalosporins (CEPH) or azithromycin (AZI) (note scales)



Alert value = Minimum Inhibitory Concentration (MIC, lowest antibiotic concentration needed to halt bacterial growth) is higher than preset thresholds^c. Alert value MICs represent decreased susceptibility to an antibiotic but may not represent resistance.

Footnotes and Abbreviations:

MSM = cisgender men who have sex with men
 MSW = cisgender men who have sex with women
^aHigh-risk = MSM with any one of the following in the prior year: diagnosis of a bacterial STI, methamphetamine or popper use, ≥10 sex partners (anal or oral), or unprotected anal sex with a partner of unknown or discordant HIV status
 Low-risk = sexually active MSM who do not meet high-risk criteria
^bSURRG = Strengthening the U.S. Response to Resistant Gonorrhea Surveillance, supported by the Centers for Disease Control and Prevention
^cAlert values:
 Ceftriaxone MIC ≥ 0.125 µg/ml Cefixime MIC ≥ 0.25 µg/ml
 Azithromycin MIC ≥ 2.0 µg/ml

Table 3: SURRG isolates with alert values for cephalosporins (ceph) or azithromycin (azi)

	2022Q2		YTD	
Unique cases tested*	111		224	
MSM	82		172	
MSW	20		39	
Cisgender Women	6		10	
Transgender	3		3	
Alert cases and % of cases with alert MICs	Azi N (%)	Ceph N (%)	Azi N (%)	Ceph N (%)
Unique alert cases*	12 (11)	1 (1)	33 (15)	1 (0)
MSM	11 (13)	1 (1)	30 (17)	1 (1)
MSW	0 (0)	0 (0)	2 (5)	0 (0)
Cisgender Women	1 (17)	0 (0)	1 (10)	0 (0)
Transgender	0 (0)	0 (0)	0 (0)	0 (0)

* Column may not equal total due to missing sexual preference data