

North Highline Land Use Subarea Plan

Survey Images

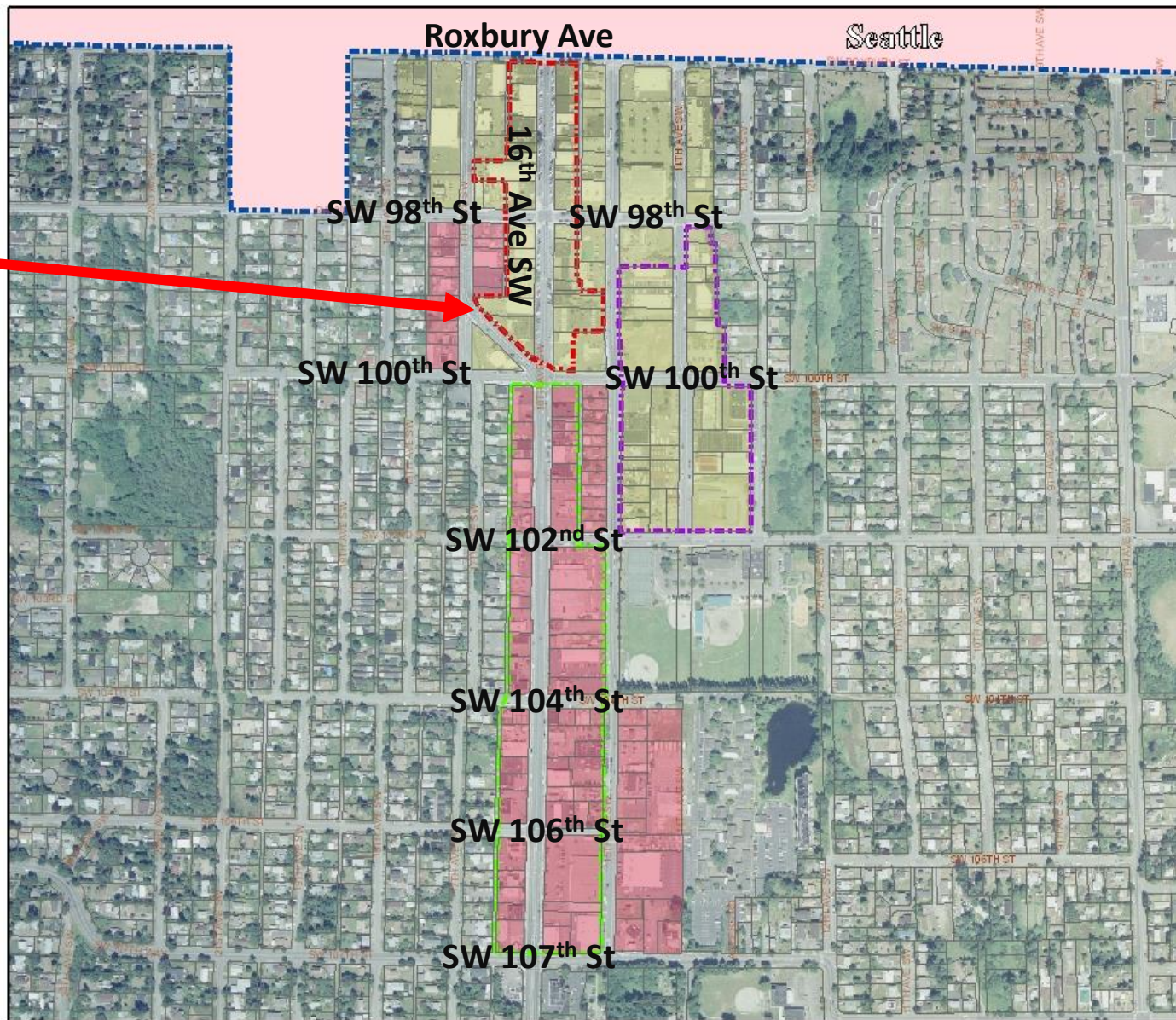
December 2019



King County

Local Services

16th Ave SW
Pedestrian
Core Area

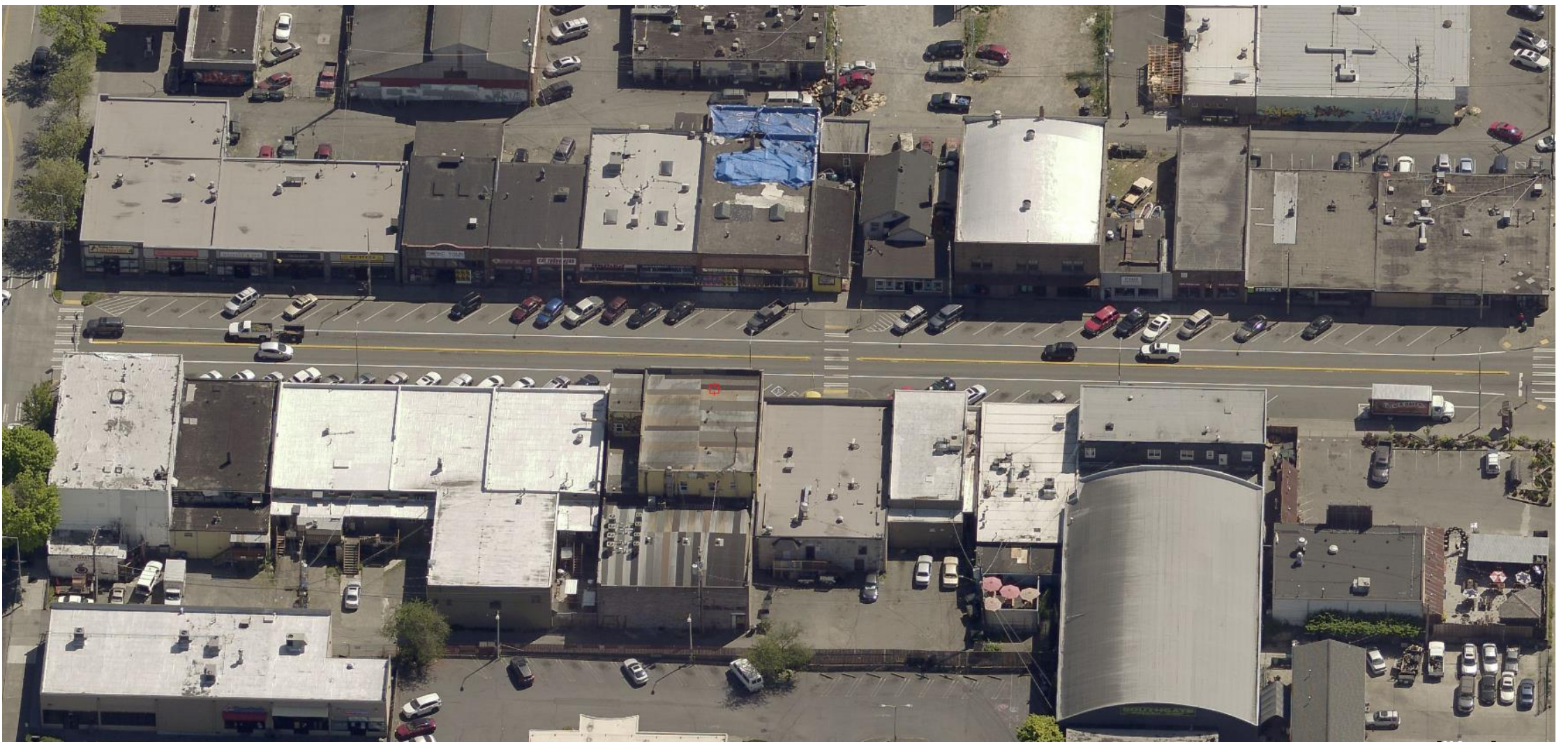


White Center Downtown Core



White Center Downtown Core (16th Avenue SW)

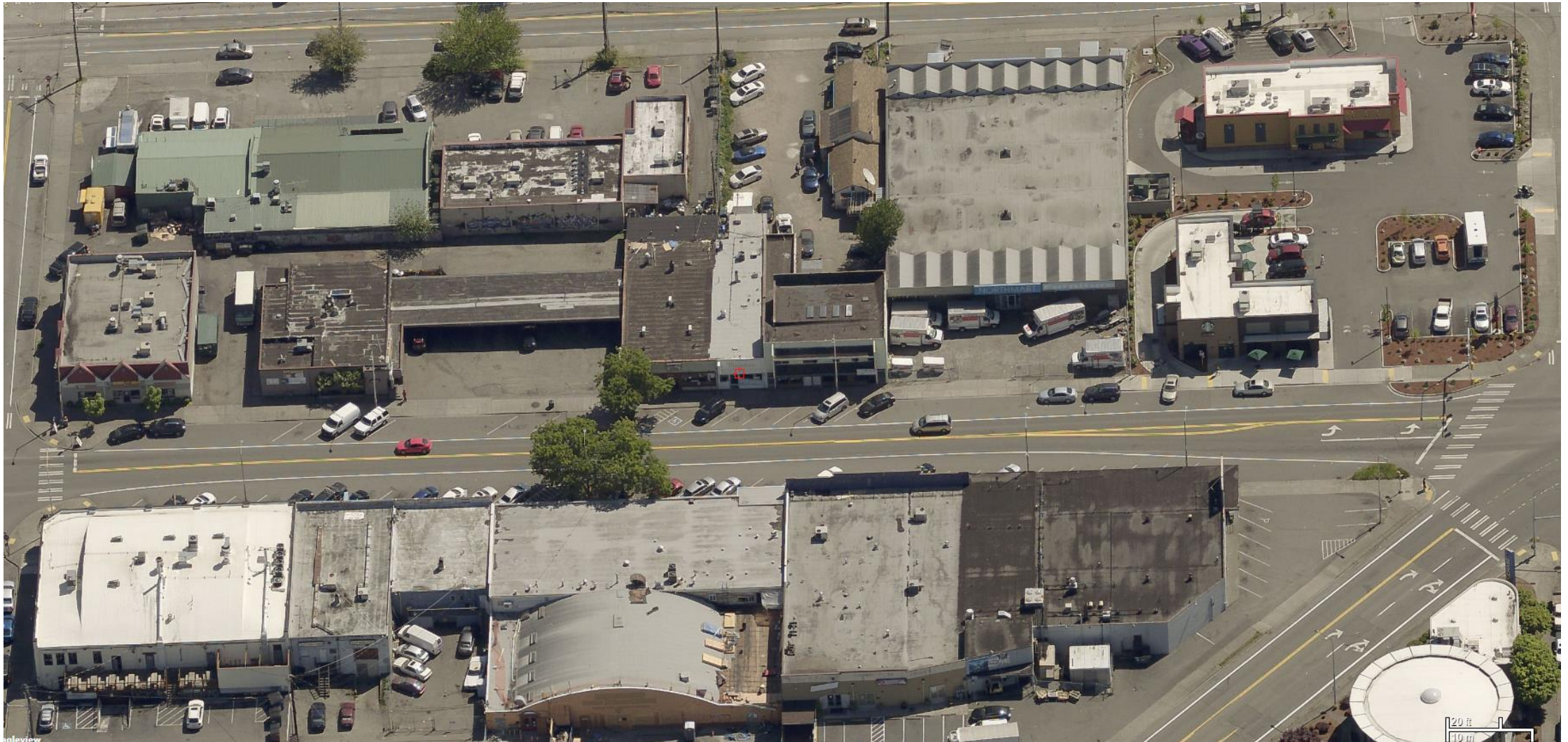




White Center Downtown Core

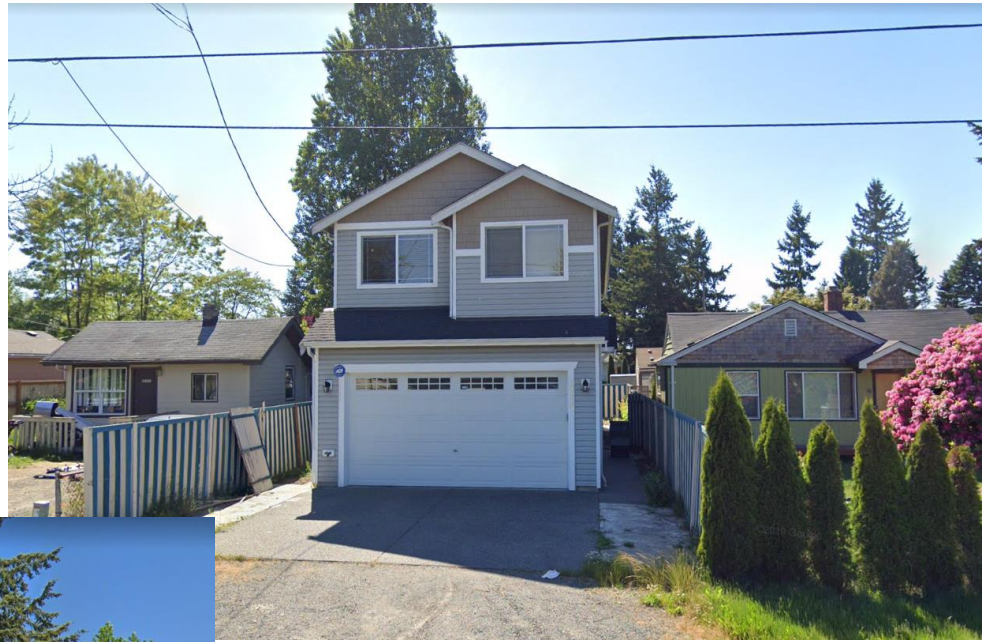
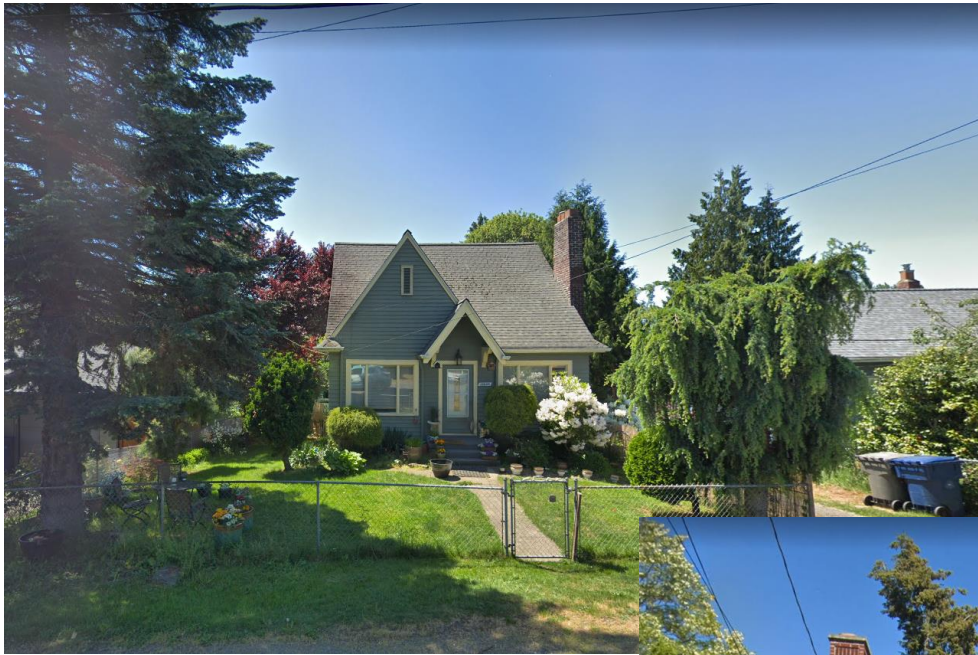
(16th Avenue SW between SW Roxbury Street and SW 98th Street)





White Center Downtown Core
(16th Ave SW between SW 98th and SW 100th)





Single-Family Houses in White Center





Duplexes in Burien and White Center





Other Examples of Duplexes





Triplexes and Small Townhouse Development





1-story Pedestrian-Oriented Development

Storefront is at the sidewalk / Parking is on the street or in the back / Welcoming to pedestrians





1-story Development – Not Pedestrian-Oriented

Parking in front; car-oriented / Front door away from the street / Not as easy for walking





Pedestrian-Oriented 2-3 story Mixed-Use Development

Commercial space on the ground floor / Apartments on the top floors

