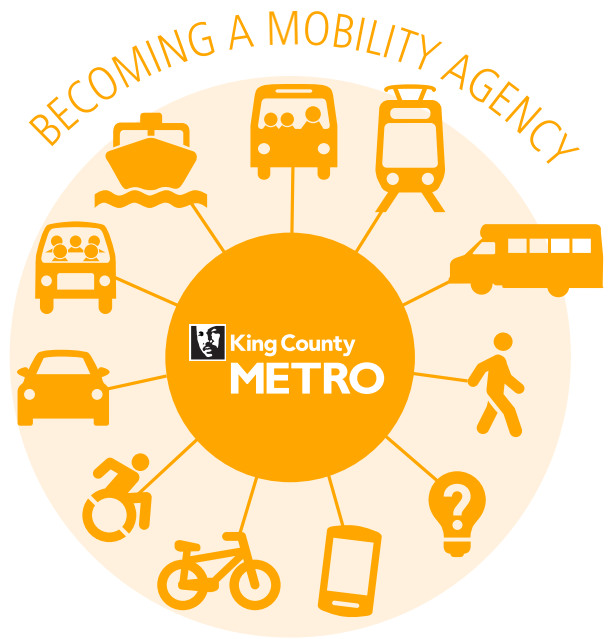


King County Metro's Mobility Framework

Metro sees mobility as a basic human right that allows communities and individuals to access the opportunities needed to thrive. We know disparities by race and place still exist in King County. We also know climate change threatens our economy, environment, health, and safety. As a public agency, it is Metro's duty to assure our mobility services support livable communities, a thriving economy, and a sustainable environment. Safety and responsible financial stewardship remain core priorities for our agency.

We are developing a mobility framework to inform how Metro allocates transit service, invests resources and updates its existing policies in the future. At the same time, we are developing a plan to fund and implement METRO CONNECTS, Metro's long-range vision for 70% more service by 2040, in a way that advances equity and addresses climate change.

The mobility framework will include guiding principles, recommendations, a summary of best practices from around the country, and demographic and travel trends in King County including emerging technologies, transit accessibility, land use and zoning patterns, and workforce trends.



What do we mean by equity?

We define equity as a system of fairness, providing full and equal access to opportunities, power and resources. King County is leading with racial justice because historical and racial inequities continue to affect all of us, and our region's ability to thrive.

What do we mean by sustainability?

Climate change threatens the health and safety of people, the economy and environment. Transportation emissions are 36% of regional greenhouse gas emissions. The mobility framework will help guide Metro's emissions reduction goals to do our part in creating a sustainable environment.

How are we creating the mobility framework?

Metro is working with an Equity Cabinet to develop the framework. Cabinet members represent communities including, but not limited to, low-income populations, communities of color, immigrants and refugees, limited English-speaking populations, and people with disabilities. We're also engaging our partners, stakeholders, elected officials, transit riders and employees throughout the process.

Now–Fall 2019
Engagement process

October 31, 2019
Mobility framework completed

2020
Metro will propose updates to its existing policies and develop a budget for the 2021–2022 biennium to carry out the principles and recommendations in the mobility framework.

Outcomes

The mobility framework will help us determine how to update Metro's existing adopted policies, including:

- **The Strategic Plan for Public Transportation**, which includes our goals and objectives, as well as the measures we use to hold ourselves accountable for the quality of our services
- **Metro's Service Guidelines**, which includes the criteria that guide how transit service is allocated around the region
- **METRO CONNECTS**, which articulates our long-range plan to meet the growing region's needs
- **King County's Strategic Climate Action Plan**, which calls for a significant decrease in greenhouse gas emissions from transportation
- **King County's Comprehensive Plan**, which guides land use patterns in unincorporated King County