

WHY **METRO** MATTERS

TRANSIT IS GOOD FOR OUR ECONOMY, OUR ENVIRONMENT, AND OUR PEOPLE.

TRANSIT MOVES PEOPLE BETTER.

In cities everywhere, transit is the most effective way to move the most people. One full Metro bus carries the same number of people as 60+ cars.

1 FULL BUS

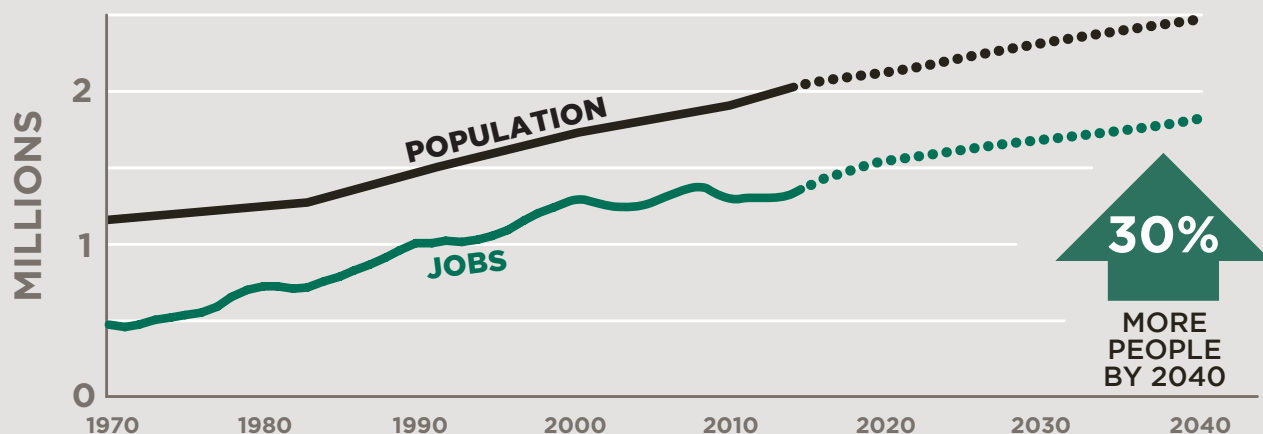


60+ PEOPLE DRIVING ALONE



EVEN MORE PEOPLE ARE COMING TO KING COUNTY.

Our beautiful county is home to 2 million people and 1.3 million jobs, and is one of the fastest growing counties in the U.S.



OPTIONS TO GET MORE PEOPLE, MORE PLACES, MORE OFTEN.

Metro is part of a healthy transportation system that frees us to go where we need to and do things we enjoy.

I RIDE THE BUS

downtown for a cheaper and stress-free daily commute.



I RIDE WITH OTHERS

so I don't have to buy another car.



I BIKE to work to build exercise into my day.

85% of Metro riders own a car and choose to ride the bus.

EVEN THOUGH I OWN A CAR...



I TAKE LIGHT RAIL

to the stadium so I don't have to fight game day traffic.



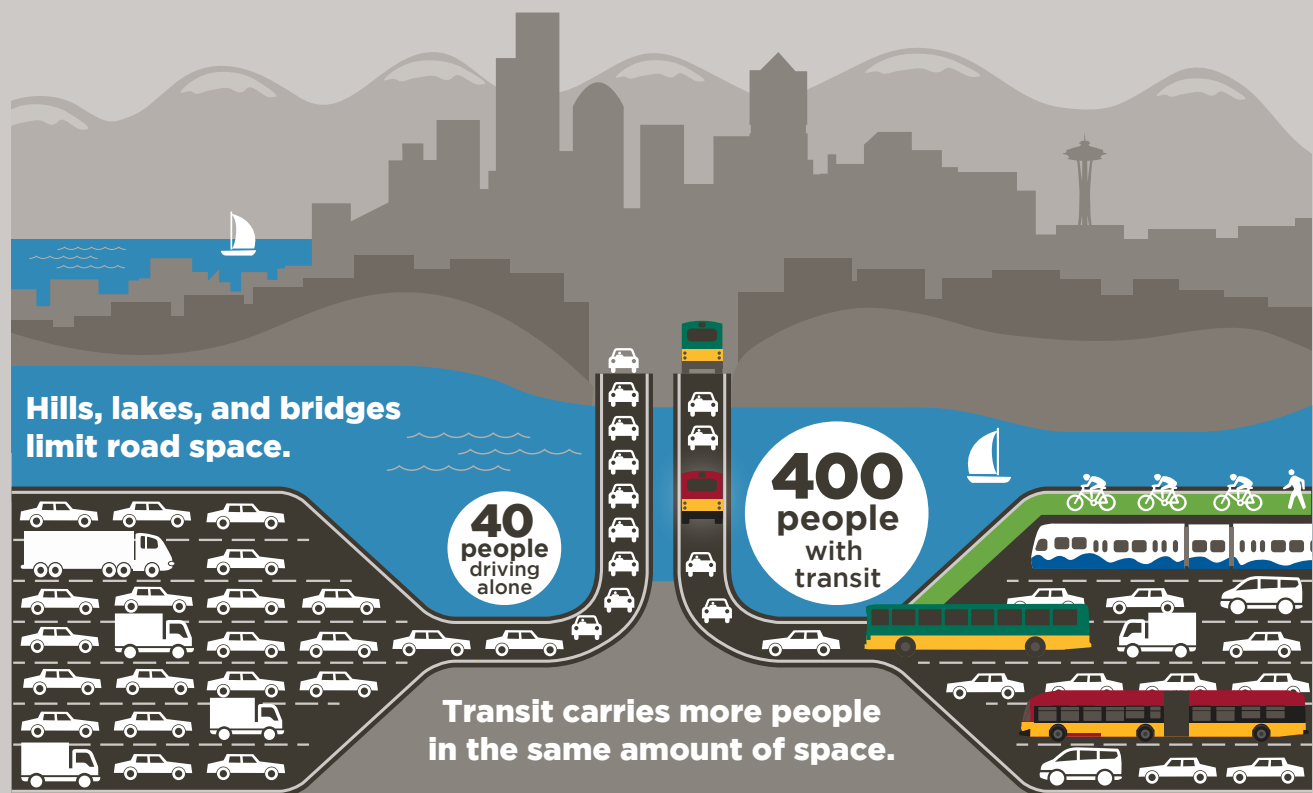
I DRIVE MY CAR

to the store when I'll have a lot to carry.



CHOOSING METRO MAXIMIZES THE ROADS WE HAVE.

Transit takes 190,000 cars off the road each weekday, reducing congestion and saving everyone time—whether or not you ride the bus.

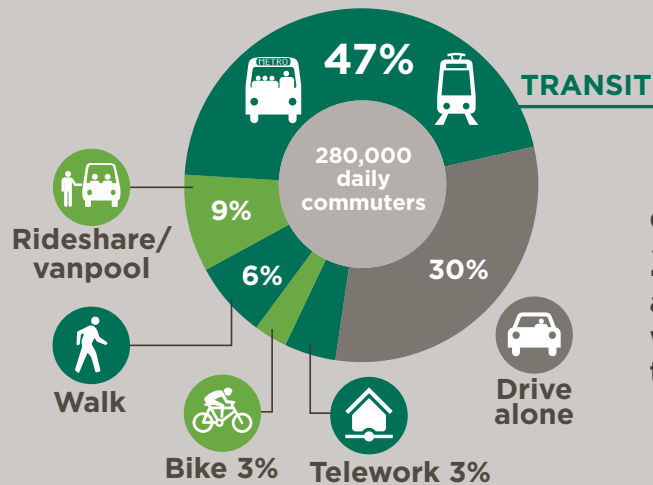


METRO IS AN IMPORTANT CHOICE FOR MANY PEOPLE.



METRO CONNECTS PEOPLE TO JOBS

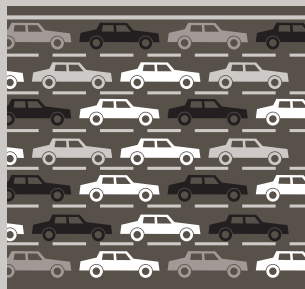
King County is Washington state's economic hub, and Metro provides reliable daily transportation to job centers across the region.



70%
downtown Seattle's
228,000 workers
are choosing better
ways to commute
than driving alone.

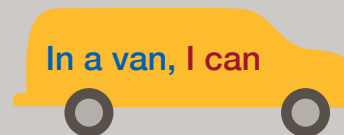
FASTER COMMUTES

During peak commute hours, Metro
frees up the equivalent of...



MORE THAN JUST BUSES

Metro operates the nation's largest
public vanpool program.



7,500 people use
Metro vanpool
each weekday.



More than **1,700** local companies contract with Metro for employee bus passes.

METRO PROTECTS THE ENVIRONMENT

Operating the nation's second largest fleet of zero-emission electric buses uses less energy, reduces pollution, and makes for healthier communities.

Transit takes **190,000** cars off the road each weekday, which keeps our air cleaner.



70 MILLION
GALLONS OF
GASOLINE
SAVED



ENOUGH TO POWER THE DRIVING HABITS
OF EVERY HOUSEHOLD IN BELLEVUE
AND KENT FOR A YEAR.

1.4 BILLION

FEWER VEHICLE MILES
LOGGED ON LOCAL ROADS

EQUAL TO:



600,000

FEWER METRIC TONS OF CO₂
RELEASED INTO THE AIR

EQUAL TO:

15 A row of 15 green tree icons.

MILLION TREES

PLANTED & GROWN FOR 10 YEARS

BY THE NUMBERS: **METRO'S** ENVIRONMENTAL BENEFITS (NET ANNUAL)

METRO PROVIDES TRANSIT FOR ALL OF US



All kinds of people use transit. For many of us, it's our only option because of age, income, or ability.



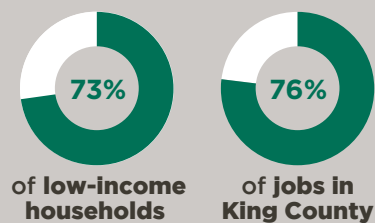
Because it's the right thing to do, Metro connects us to the most important places in our lives—jobs, school, health care, family, and friends.

METRO'S ACCESSIBILITY

Metro offers a reduced fare to provide more people and communities with transportation choices.



What's within 1/4 mile of a bus stop?



of low-income households

of jobs in King County

Local colleges where a total of

150,000+
students attend



Access and community transportation



Metro serves people who are ADA paratransit eligible.

Using transit saves you money.



UP TO **\$1,000/mo**