







Adopted Night Owl Bus Network Revisions

Night Owl Network*

-  Last Trip departs between 1:00AM and 1:30AM
-  Last Trip departs between 3:00AM and 3:30AM
-  Route 124 Night Owl Airport Extension
-  Routes with service All-Night
-  Routes with added Night Owl trips
-  Routes 82, 83, 84 pathways no longer served between 2:15AM and 4:30AM



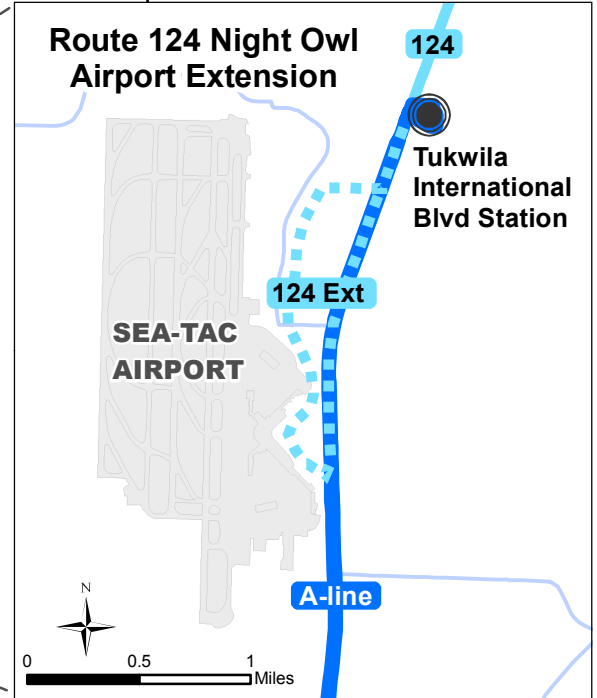
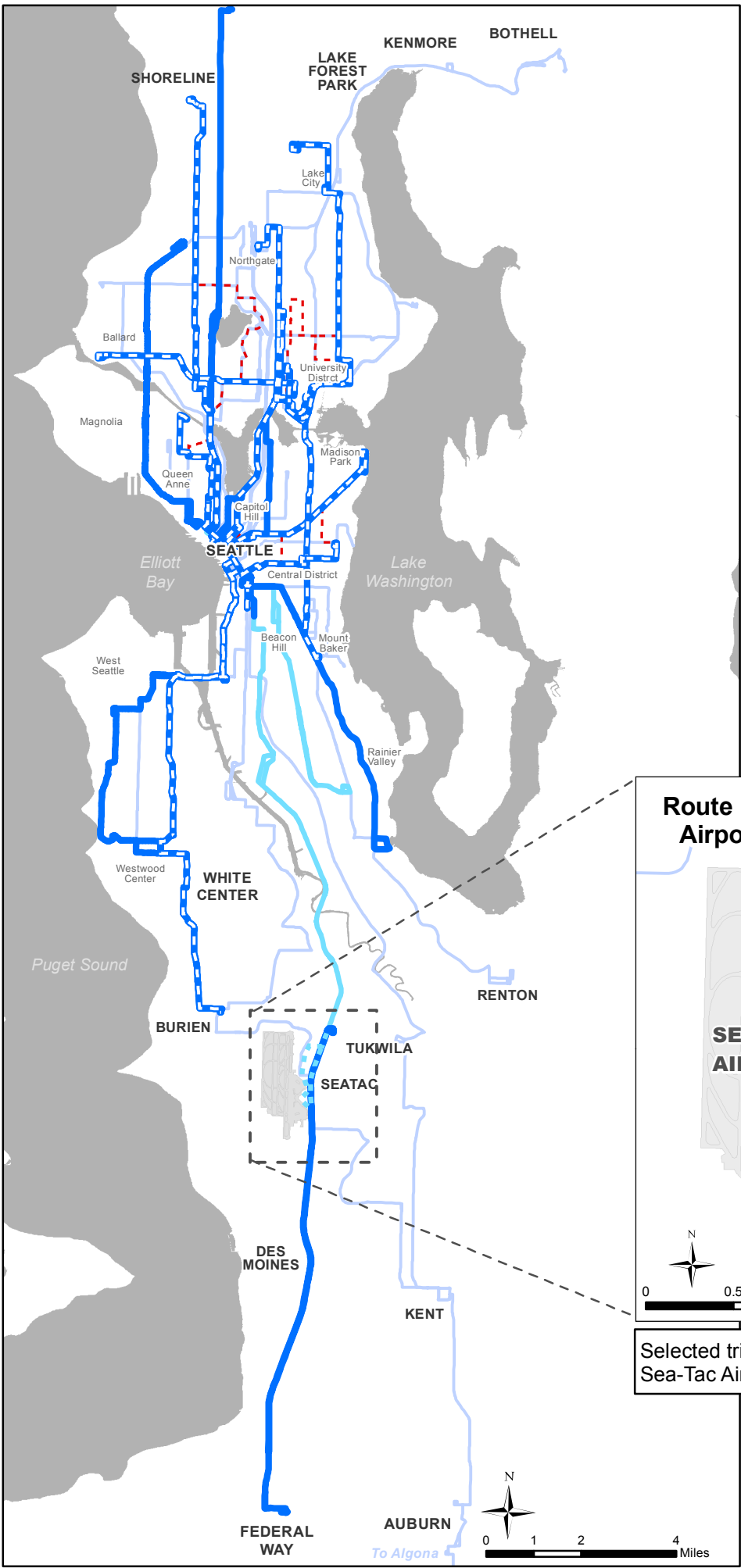
King County
METRO

Updated:
March 24, 2017

The information included on this map has been compiled by King County staff from a variety of sources and is subject to change without notice. King County makes no representations or warranties, express or implied, as to accuracy, completeness, timeliness, or rights to the use of such information. This document is not intended for use as a survey product. King County shall not be liable for any general, special, indirect, incidental, or consequential damages including, but not limited to, lost revenues or lost profits resulting from the use or misuse of the information contained on this map. Any sale of this map or information on this map is prohibited except by written permission of King County.

BK: 0_NightOwl_Network_Final

*Night Owl Network - Bus routes with trips between Midnight and 5AM



Selected trips on Route 124 will be extended to/from Sea-Tac Airport when Link isn't running late at night.

Service changes represented in this map were adopted by King County Council in March 2017, and will go into effect September 2017. More information is available at www.kingcounty.gov/metro/latenight