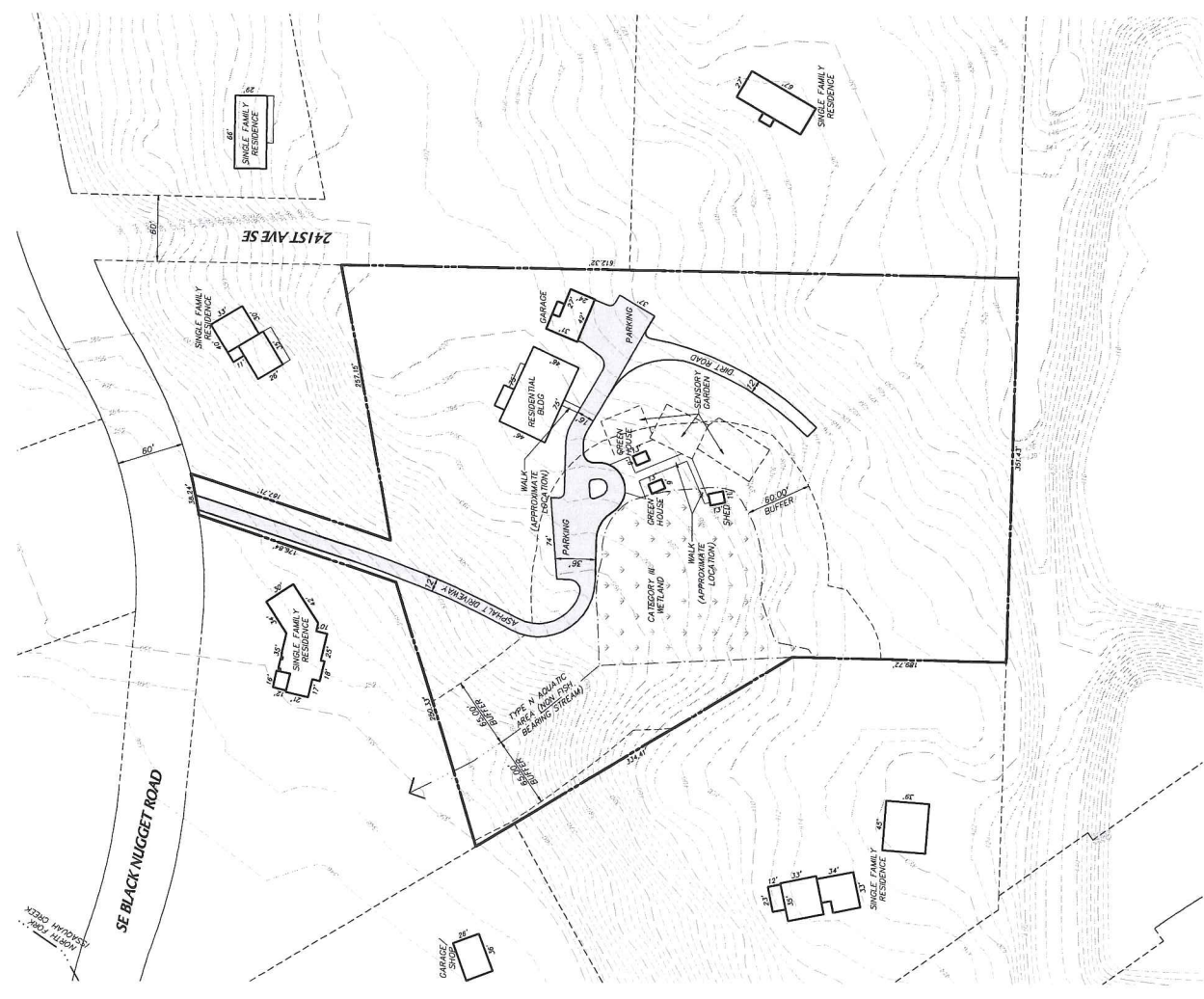
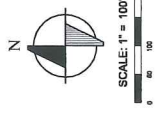


**RECEIVED**  
**AUG 24 2015**  
**KING COUNTY**  
**D.P.E.R.**

**NOTES**

THE PROPERTY BOUNDARIES SHOWN HEREON HAVE BEEN COMPILED FROM VARIOUS PUBLIC SOURCES AND HAVE NOT BEEN ESTABLISHED BY FIELD SURVEY. THE MAP SHOULD NOT BE RELIED UPON AS A BOUNDARY SURVEY. THESE CONTOURS WERE INTERPOLATED FROM PUBLIC DOMAIN AIRBORNE LIDAR DATA ACQUIRED IN 2003 BY THE PUGET SOUND LEAK CONSORTIUM SURFACES IN SHADOWED AREAS BUT MAY NOT ADEQUATELY DEFINE THE ACCURACY OF THE CONTOURS AND DIGITAL TERRAIN MODEL IS CONTINGENT ON THE ACCURACY OF THE LIDAR DATA. THIS DATA IS NOT A FIELD SURVEY AND SHOULD NOT BE RELIED UPON FOR PRELIMINARY SITE EVALUATION ONLY. DIMENSIONS ARE APPROXIMATE AND BASED ON THE ABOVE DESCRIBED INFORMATION. WETLAND LOCATION IS APPROXIMATE AND BASED ON A SKETCH PROVIDED IN THE CRITICAL AREAS DESIGNATION LOGS4278 DATED JUNE 6, 2008. ALL ON SITE STRUCTURES, DRIVES AND WALKS ARE TO REMAIN. LOCATIONS AND DIMENSIONS ARE APPROXIMATE BASED ON LOCATIONS FROM AERIAL PHOTOS. NO NEW STRUCTURES OR ROADS ARE PROPOSED. NEW LANDSCAPING OR TREE REMOVAL IS NOT PROPOSED.



**CDUP 15-0014**