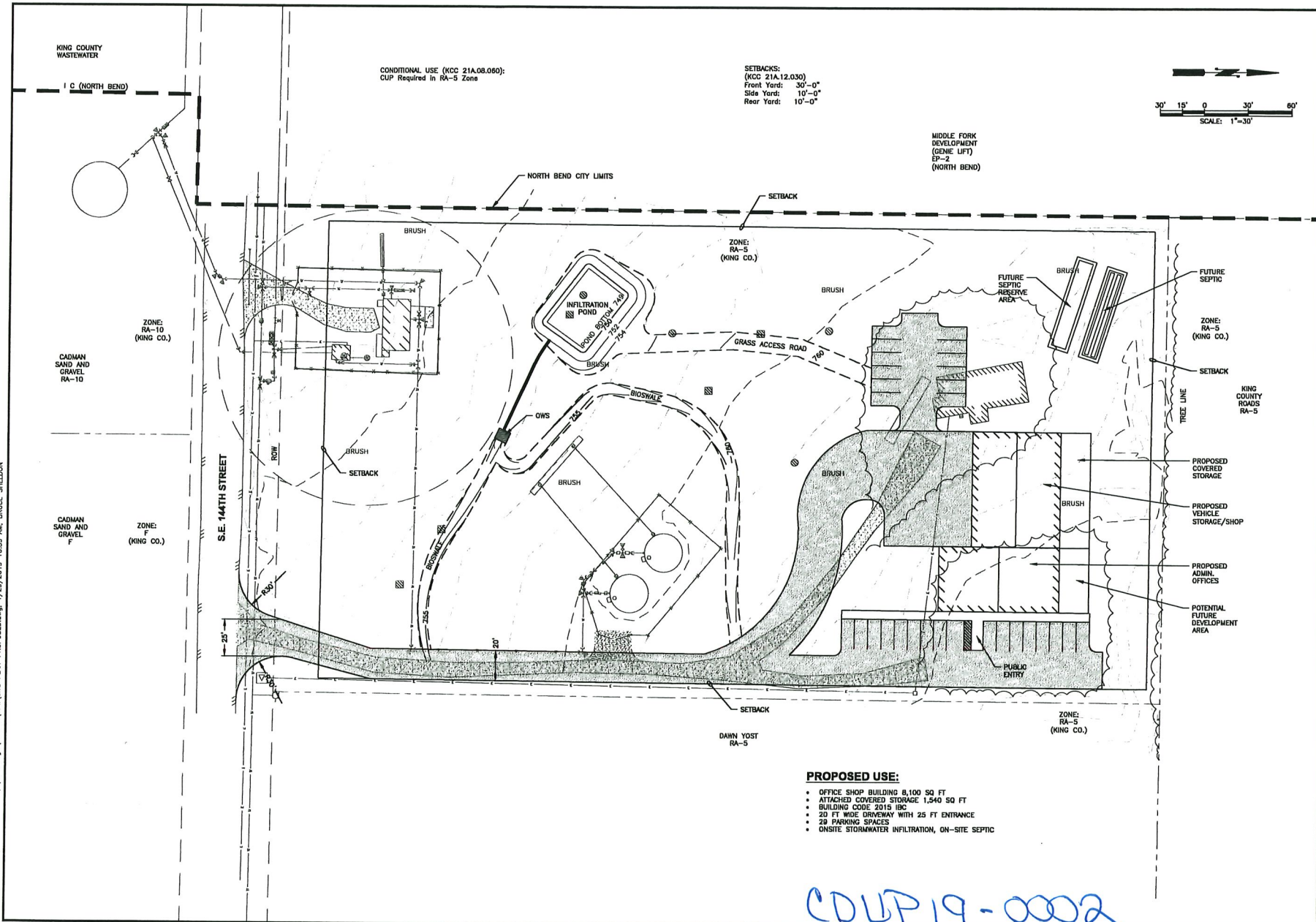


M:\Solid\18499 Edgwick Office-Shop\01 Design\Planets\Civil\SITE PLAN-PROPOSED.dwg, 1/29/2019 12:39 AM, BRUCE SHELTON



- PROPOSED USE:**
- OFFICE SHOP BUILDING 8,100 SQ FT
  - ATTACHED COVERED STORAGE 1,540 SQ FT
  - BUILDING CODE 2015 IBC
  - 20 FT WIDE DRIVEWAY WITH 25 FT ENTRANCE
  - 20 PARKING SPACES
  - ONSITE STORMWATER INFILTRATION, ON-SITE SEPTIC

CDUP 19-0002

**Gray & Osborne, Inc.**  
CONSULTING ENGINEERS  
1117 WEST WASHINGTON ST.  
SEATTLE, WASHINGTON 98114 • (206) 244-2888

DATE: FEB 2019	BS	WFP	WFP
DRAWN:		CHECKED:	
APPROVED:		APPROVED:	

**PRELIMINARY  
NOT FOR  
CONSTRUCTION**

DATE	APPROVED
REVISION	

**SALLAL WATER ASSOCIATION**  
KING WASHINGTON  
**HEADQUARTERS**  
PROPOSED SITE PLAN

SHEET: 3
OF: 3
JOB NO.: 18499
DWG. SITE PLAN, PROPOSED