

SITE NOTES:

1. PEA PATCH TO BE SURROUNDED BY 6' DEER FENCE - SEE LANDSCAPE PLANS FOR ADDITIONAL INFORMATION.
2. SEE CIVIL FOR GRADING/DRAINAGE PLANS - ADDITIONAL DETAILS ON RAIN GARDEN INCLUDED IN THE LANDSCAPE PLANS.
3. ALL HOUSES TO HAVE SOLAR PANELS ON THEIR ROOFS - SEE ROOF PLANS AND ENERGY CODE NOTES AND CALLS FOR ADDITIONAL INFORMATION.
4. PARKING LOT TO HAVE (2) LIGHT POLES - ONE AT THE WEST END OF THE NORTH STALLS AT ONE AT THE EAST END OF THE SOUTH STALLS. BOTH TO BE ON PHOTOCELL AND SCREENED TO PREVENT LIGHT POLLUTION.
5. EACH HOUSE WILL HAVE AN EXTERIOR LIGHT AT THE COVERED PORCH AND THE BIKE/TRASH RECYCLING SHED WILL HAVE AN EXTERIOR LIGHT AT EACH DOOR PLUS ONE ABOVE THE MAILBOXES. ALL WILL BE DOWNLIGHTS WITH SHIELDED BULBS AS NEEDED TO PREVENT LIGHT POLLUTION. BOTH THE GARDEN SHED AND THE PUFF HOUSE WILL ALSO HAVE AN EXTERIOR LIGHT ABOVE THE ENTRY DOOR. ALL OF THESE LIGHTS WILL BE ON A PHOTO CELL.
6. BOLLARD PATHWAY LIGHTS TO BE INSTALLED ALONG ALL INTERIOR SITE GRAVEL PATHS PROVIDING PROPER ILLUMINATION TO HOUSES. THESE LIGHTS SHALL BE DOWNLIGHTS WITH SHIELDED BULBS AS NEEDED TO PREVENT LIGHT POLLUTION AND WILL BE ON A PHOTOCELL.
7. WATER CISTERN IS TO COLLECT A PORTION OFF OF THE ROOFS TO REUSE AS GREY/ GREEN WATER TO USE FOR TOILETS AND 2 1/2" IARD HYDRANTS - ONE AT THE PEA PATCH AND ONE BY THE PARKING LOT/DRIVE EAST OF THE TRASH/RECYCLE AREA. RAIN BLANK WILL SUBMIT FOR A SEPARATE KING COUNTY HEALTH DEPARTMENT APPROVAL.

SITE PLAN

SEE SURVEY, CIVIL PLANS 4 LANDSCAPE PLANS FOR ADDITIONAL INFORMATION/ REQUIREMENTS.

NO.	REVISION DATE
FORM + FUNCTION ARCHITECTURE 1800 WESTLAKE AVE. N. #205 SEATTLE, WA 98109 206.312.9196	
6850	
VASHON HOUSING 9914 SW 188TH ST VASHON, WA 98010 PROJECT NO. 121	
DATE	1/21/20
DRAWN BY	JT, SD
CHECKED BY	JT
SHEET TITLE	SITE PLAN
SHEET NO.	A1.0

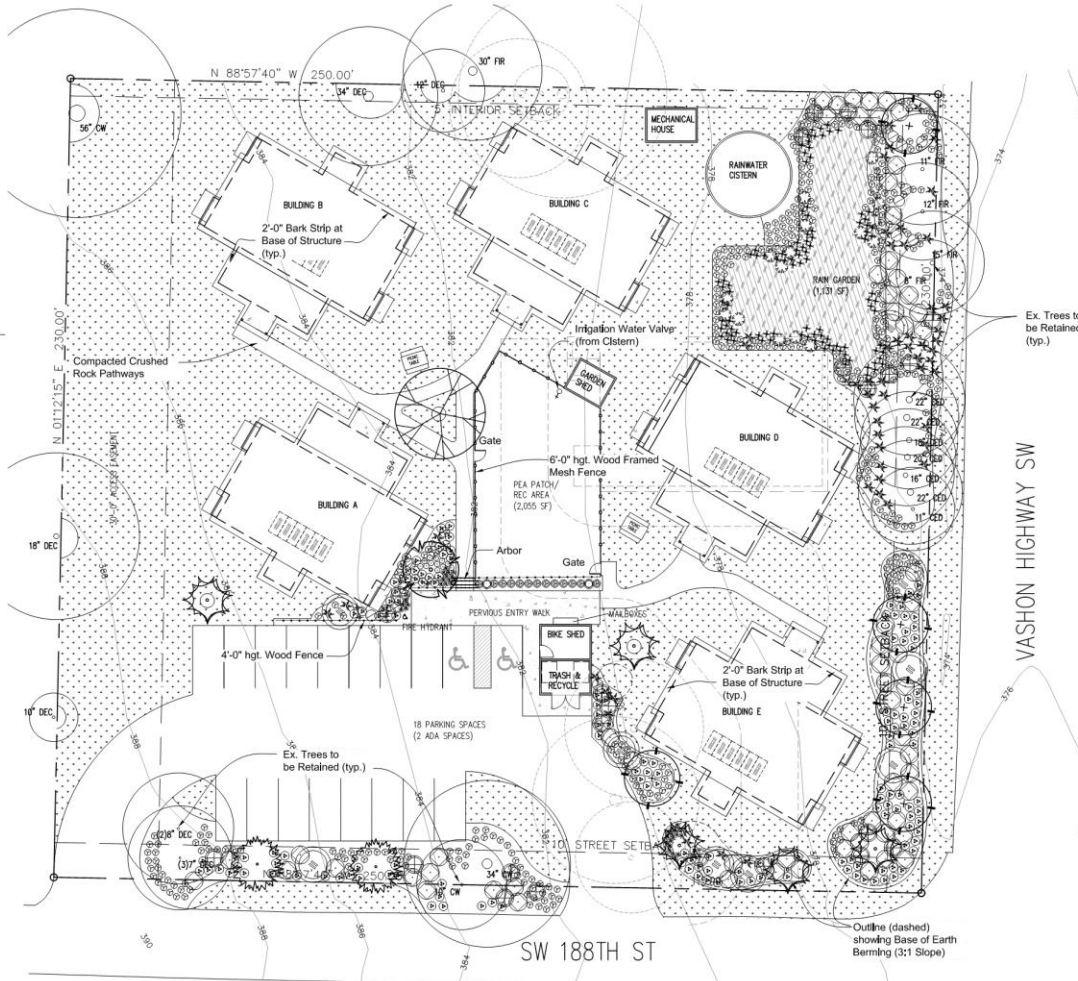
PLANT SCHEDULE

Qty.	Symbol	Botanical/ Common Name	Size/ Remarks
TREES:			
1		<i>Acer griseum</i> / PAPERBARK MAPLE	min. 2" cal., Street Tree form
5		<i>Calocedrus decurrens</i> / INCENSE CEDAR	min. 6'-0" hgt.
5		<i>Parrotia p.</i> 'Vanessa'/ PERSIAN IRONWOOD	min. 2" cal.
24		<i>Pinus contorta</i> / SHORE PINE	min. 6'-0" hgt.
1		<i>Quercus garryana</i> / GARRY OAK	min. 2" cal., Street Tree form
SHRUBS/ PERENNIALS/ GROUNDCOVERS:			
12		<i>Achillea</i> 'Moonshine'/ YARROW	1 gal.
13		<i>Buxus s.</i> 'Suffruticosa'/ BOXWOOD	min. 15" spread
94		<i>Carex s.</i> 'Aures'/ BOWLES GOLDEN SEDGE	1 gal.
15		<i>Cornus s.</i> 'Insant'/ DWARF REDTIG DOGWOOD	min. 18" spread
6		<i>Hemerocallis</i> 'Settle' 'd Oro'/ DAYLILY	min. 18" spread
274		<i>Mahonia repens</i> / CREEPING MAHONIA	1 gal.
9		<i>Myrica californica</i> / PACIFIC WAX MYRTLE	min. 36" hgt., trained to tree-standard form
4		<i>Nandina d.</i> 'Compacta'/ HEAVENLY BAMBOO	1 gal.
34		<i>Pennisetum</i> 'Hamlyn'/ DWARF FOUNTAIN GRASS	1 gal.
55		<i>Polystichum munitum</i> / SWORD FERN	min. 5 fronds @ 12" ea.
149		<i>Prunus l.</i> 'Mt. Vernon'/ DWARF LAUREL	min. 12 spr.
23		<i>Ribes s.</i> 'King Ed. VII'/ FLWG. CURRANT	min. 30" height
2		<i>Rosmarinus o.</i> 'Miss Jessop's Upright'/ ROSEMARY	5 gal.
61		<i>Spirea j.</i> 'Limemound'/ JAPANESE SPIREA	min. 2 gal.
9		<i>Vaccinium ovatum</i> / EVERGREEN HUCKLEBERRY	1 gal.
		Turf Grass Mix	Hydroseeded
		Pond Mix	Hydroseeded

* Plant names shown in **bold** are native/ drought tolerant.

* Plant sizes are specified per the American Standard for Nursery Stock, Publication-May 2, 1986 sponsored by the American Association of Nurserymen, Inc.

©2018 Copyright Glenn Takagi Landscape Architect. All Rights Reserved.
 All design and related information incorporated herein is the intellectual property of Glenn Takagi Landscape Architect. No part of this information may be reproduced or transmitted in any form or by any means, electronic, mechanical, photocopying, recording, or by any information storage and retrieval system, without the written authorization of Glenn Takagi Landscape Architect.



VASHON HOUSING
 9914 SW 188th Street
 Vashon, WA 98070



Planting Plan

Project No.: _____
 Drawn: GT
 Checked: GT
 Drawing Issue: 1.21.20
 Revisions: _____

