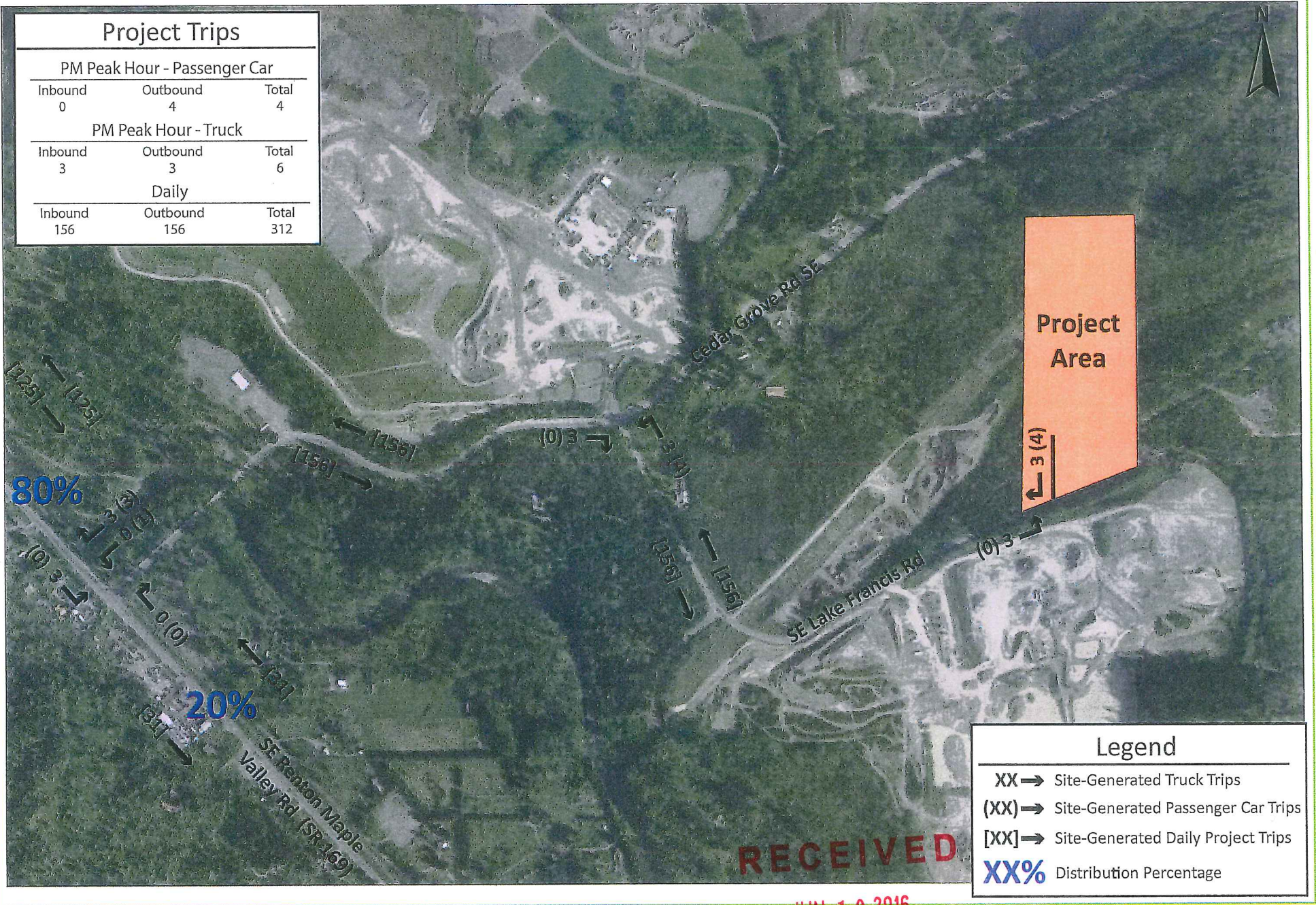


### Project Trips

PM Peak Hour - Passenger Car		
Inbound	Outbound	Total
0	4	4
PM Peak Hour - Truck		
Inbound	Outbound	Total
3	3	6
Daily		
Inbound	Outbound	Total
156	156	312



RECEIVED

JUN 10 2016

KING COUNTY D.P.E.R.

Figure 2  
Site-Generated Traffic Volumes  
PM Peak Hour and Daily

GRDE16-0065