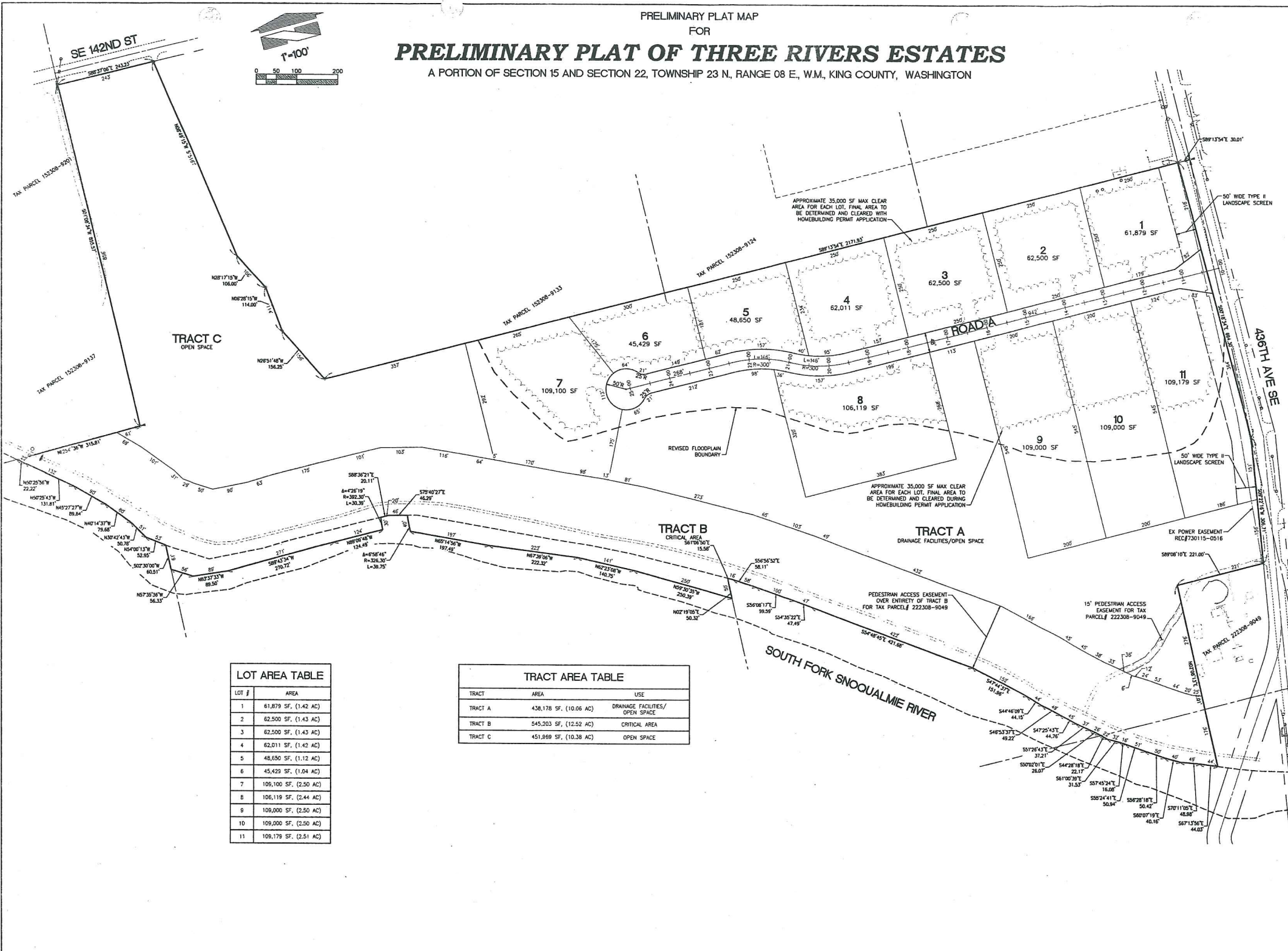
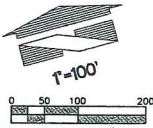


PRELIMINARY PLAT MAP
FOR
PRELIMINARY PLAT OF THREE RIVERS ESTATES
A PORTION OF SECTION 15 AND SECTION 22, TOWNSHIP 23 N., RANGE 08 E., W.M., KING COUNTY, WASHINGTON



LOT #	AREA
1	61,879 SF, (1.42 AC)
2	62,500 SF, (1.43 AC)
3	62,500 SF, (1.43 AC)
4	62,011 SF, (1.42 AC)
5	48,650 SF, (1.12 AC)
6	45,429 SF, (1.04 AC)
7	109,100 SF, (2.50 AC)
8	106,119 SF, (2.44 AC)
9	109,000 SF, (2.50 AC)
10	109,000 SF, (2.50 AC)
11	109,179 SF, (2.51 AC)

TRACT	AREA	USE
TRACT A	438,178 SF, (10.06 AC)	DRAINAGE FACILITIES/ OPEN SPACE
TRACT B	545,203 SF, (12.52 AC)	CRITICAL AREA
TRACT C	451,869 SF, (10.38 AC)	OPEN SPACE

Job Number: **17503**
 Sheet: **2 of 6**

Title: **PRELIMINARY PLAT MAP FOR THREE RIVERS ESTATES**

For: **KUSAK TREE FARM, LLC
3910 46TH AVE S
SEATTLE, WA 98118**

Date: _____
 By: _____
 Checked: _____
 Approved: _____
 Date: 1/25/18

Scale: Horizontal 1"=100', Vertical N/A

Designated: _____
 Drawn: _____
 Checked: _____
 Approved: _____
 Date: 1/25/18

18215 72ND AVENUE SOUTH
 KENT, WA 98032
 (425)251-6222
 (425)251-6782 FAX
 CIVIL ENGINEERING, LAND PLANNING,
 SURVEYING, ENVIRONMENTAL SERVICES

BARGHAUSEN
 CONSULTING ENGINEERS