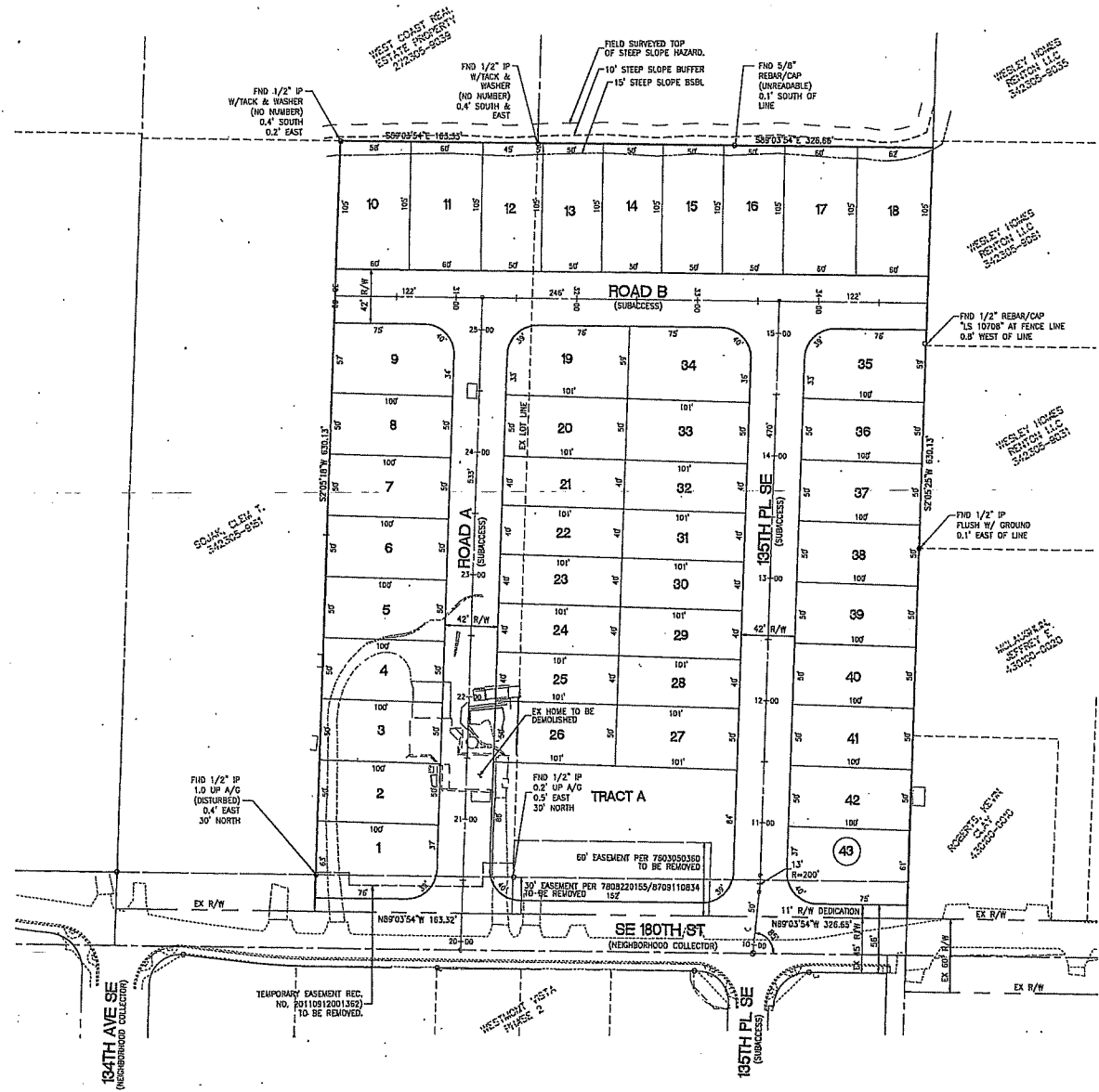


PRELIMINARY PLAT MAP  
FOR  
**PRELIMINARY PLAT OF HAWTHORNE CREST**  
A PORTION OF SECTION 34, TOWNSHIP 23 N., RANGE 05 E., W.M., KING COUNTY, WASHINGTON

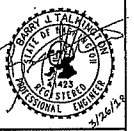


LOT #	AREA	LOT #	AREA	LOT #	AREA
1	6,080 SF	16	5,250 SF	31	4,038 SF
2	5,000 SF	17	6,300 SF	32	4,038 SF
3	5,000 SF	18	6,411 SF	33	5,048 SF
4	5,000 SF	19	5,732 SF	34	5,927 SF
5	5,000 SF	20	5,046 SF	35	5,682 SF
6	5,000 SF	21	4,037 SF	36	5,000 SF
7	5,001 SF	22	4,037 SF	37	5,000 SF
8	5,001 SF	23	4,037 SF	38	5,000 SF
9	5,562 SF	24	4,037 SF	39	5,000 SF
10	6,188 SF	25	4,037 SF	40	5,000 SF
11	6,300 SF	26	5,046 SF	41	5,000 SF
12	5,230 SF	27	5,048 SF	42	5,000 SF
13	5,230 SF	28	4,038 SF	43	6,059 SF
14	5,230 SF	29	4,038 SF		
15	5,230 SF	30	4,038 SF		
TOTAL LOT AREA		217,156 SF (4.99 AC)			

TRACT	AREA	USE
TRACT A	22,142 SF	DRAINAGE FACILITIES/RECREATION
RECREATION AREA REQUIRED	390 SF/LOT X 43 LOTS = 16,770 SF (0.38 AC)	
RECREATION SPACE PROVIDED	22,142 SF (0.51 AC)	

PRELIMINARY PLAT MAP  
FOR  
**HAWTHORNE CREST**

MANVUE WA LLC  
1110 112TH AVE NE, SUITE 202  
BELLEVUE, WA 98004  
CONTACT: Lisa Cavell (425) 646-4022



Scale: Horizontal 1" = 50' Vertical N/A  
Designed: BJC  
Drawn: BJC  
Checked: BJC  
Approved: BJC  
Date: JAZ/19

18215 72ND AVENUE SOUTH  
KENT, WA 98032  
(425)201-6222 FAX  
(425)201-6762 FAX  
CIVIL ENGINEERING, LAND PLANNING,  
SURVEYING, ENVIRONMENTAL SERVICES



Job Number  
**18598**  
Sheet  
**2** of **5**

PLAT 18-0002

PL180002 (1/23/20) preliminary Vistas-18-plat 3/17/2018 12:52 PM HP/ED