

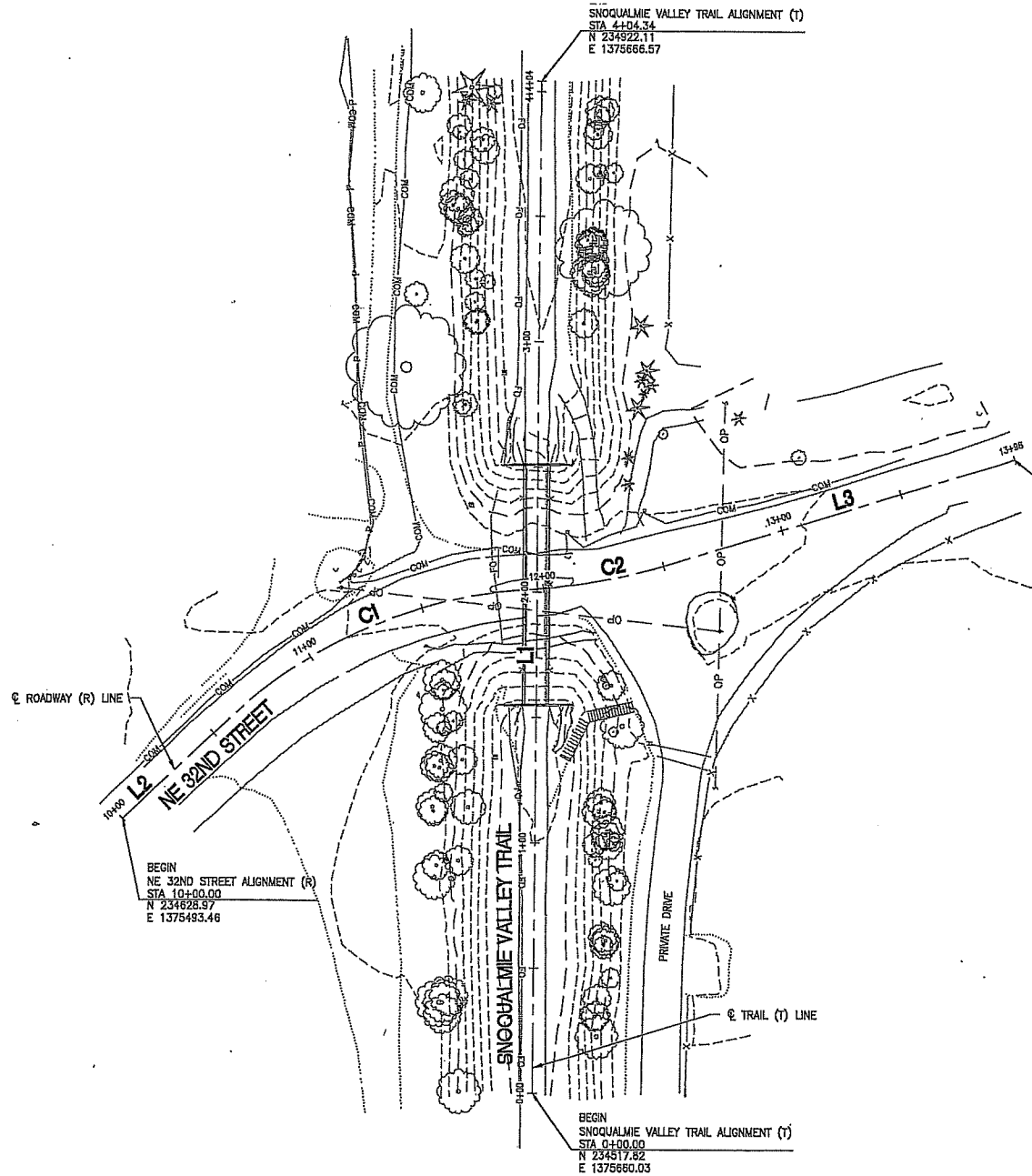
MAIN FILE COPY

RECEIVED

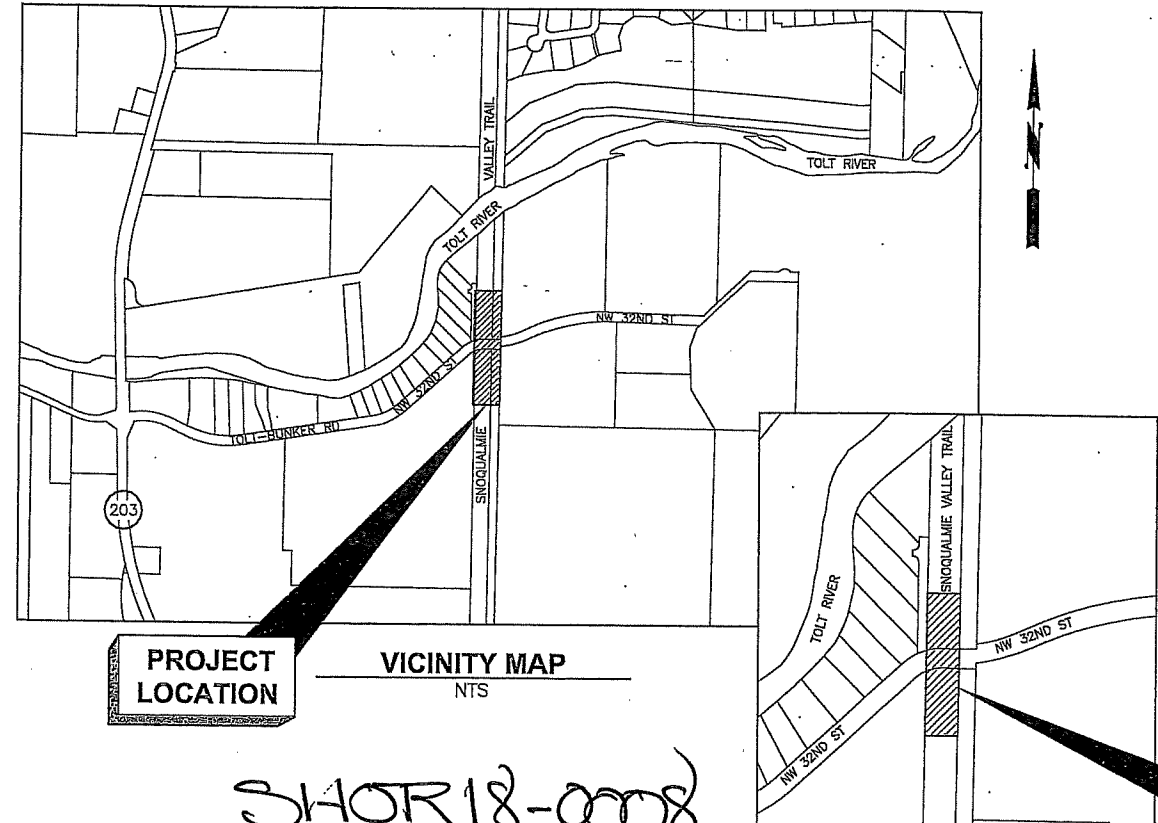
APR 17 2018
KING COUNTY
D.P.E.R.

| SNOQUALMIE VALLEY TRAIL | | | | | |
|-------------------------|---------|---------|--------|------------|-------|
| NUMBER | STATION | LENGTH | RADIUS | BEARING | DELTA |
| L1 | 0+00.00 | 404.34' | — | N0°55'40"E | — |

| NE 32ND STREET | | | | | |
|----------------|----------|---------|---------|-------------|-----------|
| NUMBER | STATION | LENGTH | RADIUS | BEARING | DELTA |
| L2 | 10+00.00 | 57.16' | — | N47°50'27"E | — |
| C1 | 10+57.16 | 132.80' | 200.00' | N66°51'48"E | 38°02'42" |
| C2 | 12+00.94 | 52.20' | 250.00' | N78°54'13"E | 11°57'52" |
| L3 | 12+53.14 | 145.35' | — | N73°55'17"E | — |



END
NE 32ND STREET ALIGNMENT (R)
STA 13+98.43
N 234755.73
E 1375857.58



SI40R18-0008

| | |
|----------|--------|
| # | FILE # |
| 32499D | |
| REVISION | |
| 2/20/18 | △ |
| WB | △ |



Department of Natural Resources and
Parks - Parks and Recreation Division
Capital Planning and Development
201 S. Jackson St, Suite 700
Seattle, Washington 98104

REMLINGER BRIDGE REPLACEMENT
SNOQUALMIE VALLEY TRAIL
KING COUNTY, WA



HORIZONTAL ALIGNMENT
CONTROL PLAN

G02