



SHORT PLAT NO. \_\_\_\_\_

KING COUNTY, WASHINGTON

RECORDING NO. \_\_\_\_\_ VOL./PG. \_\_\_\_\_

SCALE: 1 INCH = 50 FT.

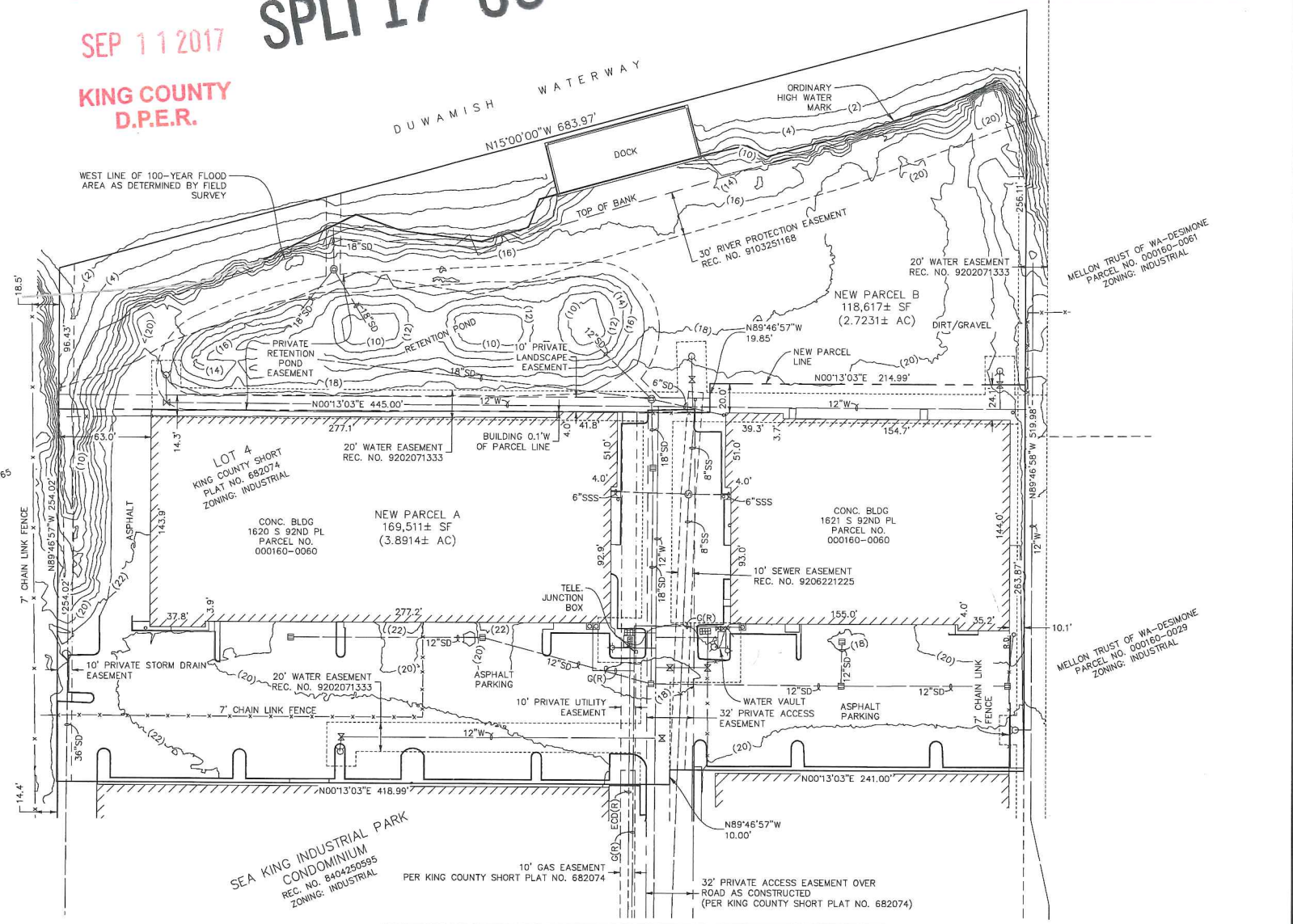
PORTION OF  
NW 1/4 OF THE SW 1/4, SEC. 33, TWP. 24 N., RGE. 4 E., W.M.

RECEIVED  
SEP 11 2017  
KING COUNTY  
D.P.E.R.

SPLT 17-0020

NOTES

1. THIS SURVEY WAS CONDUCTED ACCORDING TO THE DESCRIPTION SHOWN, FURNISHED BY CHICAGO TITLE INSURANCE COMPANY, COMMITMENT NO. 0104189-06, DATED AUGUST 25, 2017, AND COMMITMENT NO. 014190-06, DATED AUGUST 25, 2017. THE EASEMENTS SHOWN OR NOTED HEREON RELATE TO THESE COMMITMENTS.
2. SITE AS SHOWN CONTAINS 288,127 SQUARE FEET OR 6.6145 ACRES, MORE OR LESS.
3. THIS SURVEY REPRESENTS VISIBLE PHYSICAL IMPROVEMENT CONDITIONS EXISTING IN MARCH, 2017.
4. VERTICAL DATUM: NAVD 88
5. THE TOPOGRAPHIC INFORMATION SHOWN HEREON IS COMBINED FROM LIDAR DATA AND FIELD VERIFIED ELEVATIONS.
6. THIS IS A FIELD TRAVERSE SURVEY. A CARLSON FIVE SECOND COMBINED ELECTRONIC TOTAL STATION WAS USED TO MEASURE THE ANGULAR AND DISTANCE RELATIONSHIPS BETWEEN THE CONTROLLING MONUMENTATION AS SHOWN. CLOSURE RATIOS OF THE TRAVERSE MET OR EXCEEDED THOSE SPECIFIED IN WAC 332-130-090. ALL MEASURING INSTRUMENTS AND EQUIPMENT ARE MAINTAINED IN ADJUSTMENT ACCORDING TO MANUFACTURER'S SPECIFICATIONS.



LEGEND

- CATCH BASIN
- CLEANOUT
- ELECTRICAL TRANSFORMER
- FENCE LINE
- FIRE DEPARTMENT CONNECTION
- FIRE HYDRANT
- GAS MAIN
- GAS METER
- PAINTED LOCATION
- RECORD LOCATION
- SANITARY SEWER
- SANITARY SIDE SEWER
- SANITARY SEWER MANHOLE
- STORM DRAIN
- STORM DRAIN MANHOLE
- WATER MAIN
- WATER METER
- WATER VALVE



**BUSH, ROED & HITCHINGS, INC.**  
LAND SURVEYORS & CIVIL ENGINEERS

2009 MINOR AVE. EAST (206) 323-4144  
SEATTLE, Washington 1-800-935-0508  
98102-3513 FAX# (206) 323-7135



SEA KING INDUSTRIAL PARK EAST  
SITE PLAN

DWN. BY: SCB	SCALE: 1"=50'
CHK. BY: SCB	JOB NO.: 2012039.02
DATE: 9/11/2017	SHEET 2 OF 3