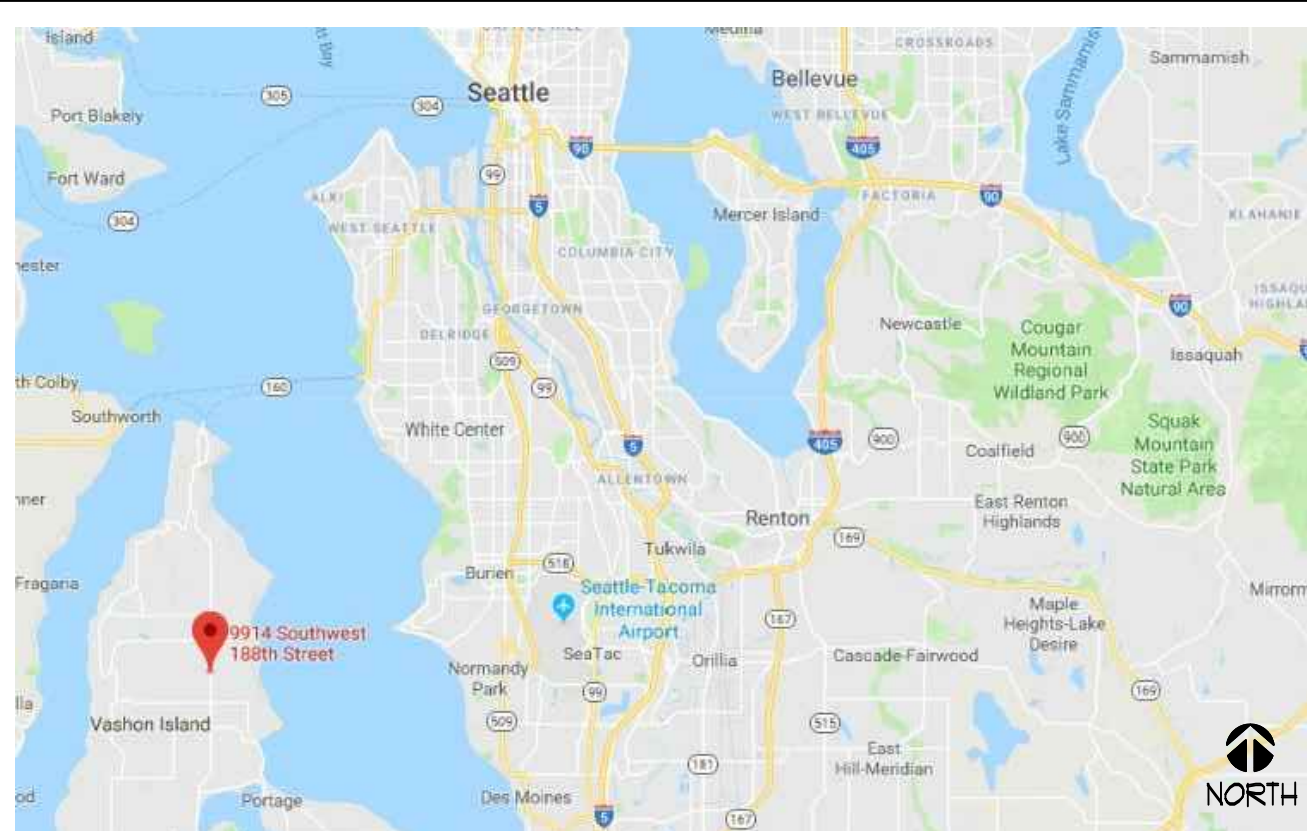
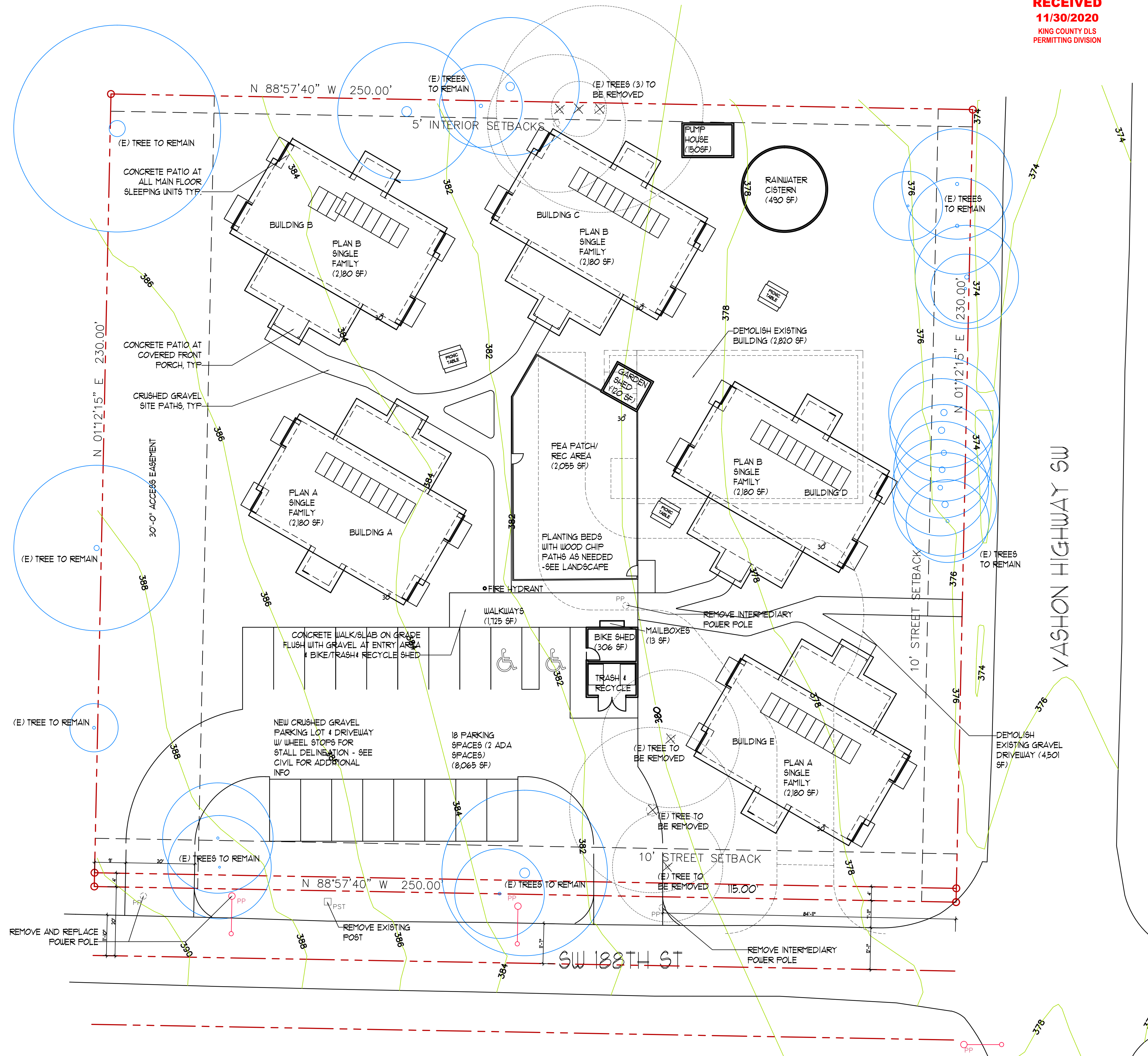


VICINITY MAP:



REVISION



SITE PLAN

SITE NOTES:

1. PEA PATCH TO BE SURROUNDED BY 6" DEER FENCE - SEE LANDSCAPE PLANS FOR ADDITIONAL INFORMATION.
2. SEE CIVIL FOR GRADING/DRAINAGE PLANS - ADDITIONAL DETAILS ON RAIN GARDEN INCLUDED ON THE LANDSCAPE PLANS.
3. ALL HOUSES TO HAVE SOLAR PANELS ON THEIR ROOFS - SEE ROOF PLANS AND ENERGY CODE NOTES AND CALCS FOR ADDITIONAL INFORMATION.
4. PARKING LOT TO HAVE (2) LIGHT POLES - ONE AT THE WEST END OF THE NORTH STALLS AT ONE AT THE EAST END OF THE SOUTH STALLS. BOTH TO BE ON PHOTOCELL AND SCREENED TO PREVENT LIGHT POLLUTION.
5. EACH HOUSE WILL HAVE AN EXTERIOR LIGHT AT THE COVERED PORCH AND THE BIKE/TRASH RECYCLING SHED WILL HAVE AN EXTERIOR LIGHT AT EACH DOOR PLUS ONE ABOVE THE MAILBOXES. ALL WILL BE DOWNLIGHTS WITH SHIELDED BULBS AS NEEDED TO PREVENT LIGHT POLLUTION. BOTH THE GARDEN SHED AND THE PUMP HOUSE WILL ALSO HAVE AN EXTERIOR LIGHT ABOVE THE ENTRY DOOR. ALL OF THESE LIGHTS WILL BE ON A PHOTO CELL.
6. BOLLARD PATHWAY LIGHTS TO BE INSTALLED ALONG ALL INTERIOR SITE GRAVEL PATHS PROVIDING PROPER SAFE ILLUMINATION TO HOUSES. THESE LIGHTS SHALL BE DOWNLIGHTS WITH SHIELDED BULBS AS NEEDED TO PREVENT LIGHT POLLUTION AND WILL BE ON A PHOTOCELL.
7. WATER CISTERN IS TO COLLECT A PORTION OFF OF THE ROOFS TO REUSE AS GREY/ GREEN WATER TO USE FOR TOILETS AND 2 YARD HYDRANTS - ONE AT THE PEA PATCH AND ONE BY THE PARKING LOT/DRIVE EAST OF THE TRASH/RECYCLE AREA. RAIN BANK WILL SUBMIT FOR A SEPARATE KING COUNTY HEALTH DEPARTMENT APPROVAL.

SEE SURVEY, CIVIL PLANS & LANDSCAPE PLANS FOR ADDITIONAL INFORMATION/ REQUIREMENTS.

NO.	REVISION DATE
	11/23/20
<b>FORM + FUNCTION ARCHITECTURE</b> 1800 WESTLAKE AVE. N. #205 SEATTLE, WA 98109 206.372.9796	
VASHON HOUSING 9914 SW 188TH ST VASHON, WA 98070 PROJECT No. 1221	
DATE	1/21/20
DRAWN BY	JT, SD
CHECKED BY	JT
SHEET TITLE	SITE PLAN
SHEET NO.	A1.0