



2022 Year-end King County Firearm Violence Report

King County Prosecuting Attorney's Office - Crime Strategies Unit
paocsu@kingcounty.gov January 2023

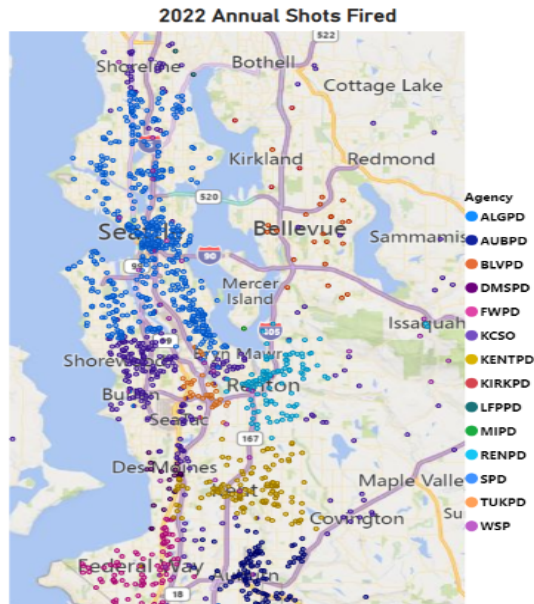
Total Shootings and Shots Fired Incidents

The numbers of firearm homicide victims, nonfatal shooting victims, and total shots fired incidents for 2022 are listed below. This data comes from the 8 jurisdictions in King County (listed below) that have historically had over 90% of firearm violence, but also includes data from many of the smaller jurisdictions in King County. This does not include suicides, confirmed self-inflicted shootings, or officer involved shootings.



Geographic Distribution

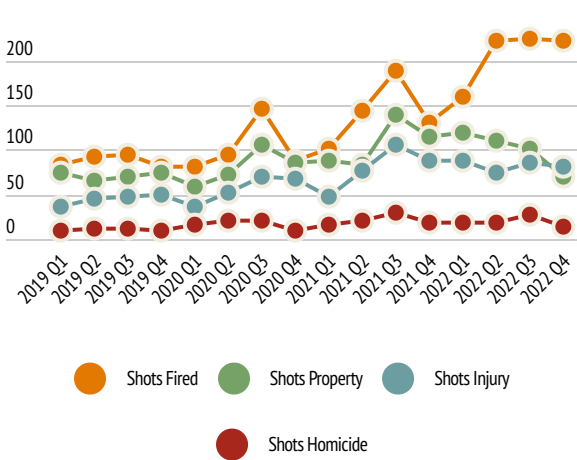
Shootings in King County are not evenly distributed by jurisdiction. We currently collect data from over 20 agencies, but a majority the data comes from 8 agencies: Seattle, Auburn, Des Moines, Federal Way, Kent, Renton, Tukwila, and the King County Sheriff's Office (including unincorporated King County and 13 Contract Cities, 2 Transit Agencies and 1 AARF). These 8 agencies account for roughly 80% of King County's population. In 2022, 59% of the total shots fired incidents and 54% of the shooting victims (both firearm homicide victims and nonfatal shooting victims) were from agencies outside of Seattle.



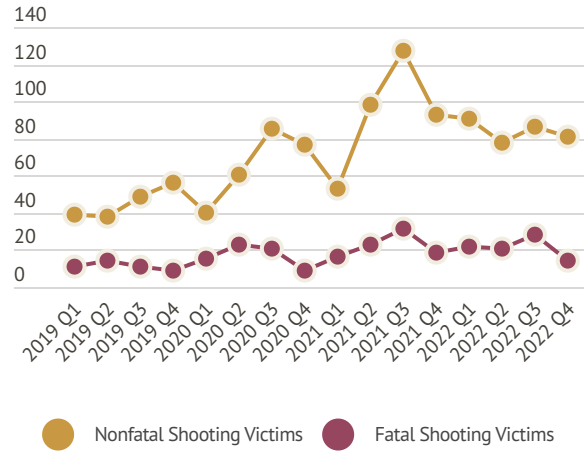
Historical Comparisons

The graphs below depict the number of shots fired incidents broken down by type from 2019-2022 and the number of non-fatal & fatal shooting victims from 2019-2022. Despite declines in most shots fired categories compared to last year, shots fired incidents in 2022 (1654) was up 16% (+550) but the number of shooting victims (440) was down almost 6% (-27). More specifically, the number of fatal shooting victims was down 7% (-6) and nonfatal shooting victims was down about 5% (-18) over those averages.

Number and Type of Shots Fired Incidents



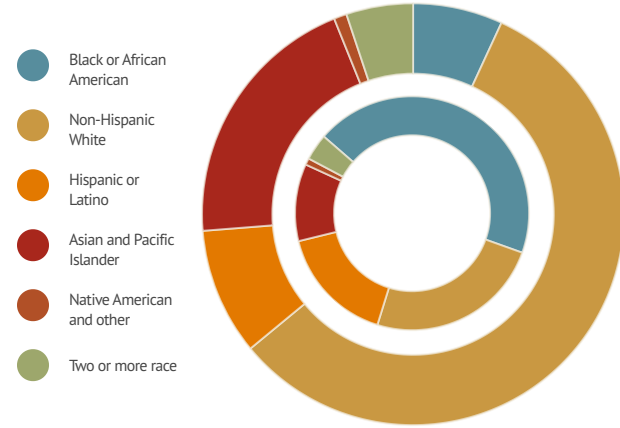
Number of Shooting Victims



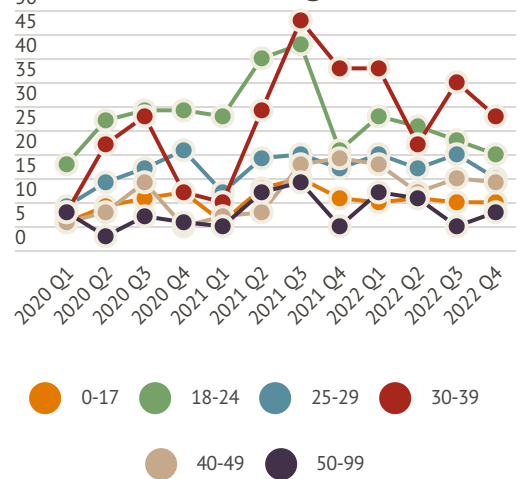
Shooting Victim Demographics

Of the 440 shooting victims in 2022, 88% were male; 23% were aged between 18-24; and 76% were people of color. 2022 saw a steady decline in shooting victims aged between 18-24 to near pre-pandemic levels for Q4 but the first year on record when people aged between 30-39 represented the largest number of victims.

Race/Ethnicity
Outer Circle = General Population
Inner Circle = Shooting Victims



Victim Age



** KCPAO relies on law enforcement reports for the demographic information about victims, including race/ethnicity. Each law enforcement agency has separate policies and systems for collecting demographic data, which can result in varying levels of reporting. KCPAO is aware that this race/ethnicity data may not accurately reflect the demographics of victims of gun violence in our community.

