

# Bienvenida

## KCLX 2022-2023 LEADERSHIP COMMITTEE



### MARGARITA AGUADO: CO-CHAIR

Margarita has recently accepted a new position as a Community Engagement Planner at King County Metro Transit. Formerly an Events Co-Chair, she is excited to support KCLx in her new role as Co-Chair with Maria.

#### What do you look forward to this year in your new role?

"I look forward to meeting some more folks in the group and addressing some of the needs in King County through direct volunteer service with you all. Looking forward to working together!"

#### What do you look forward to this year in your new role?

"I look forward to continuing the welcome new folks into the space and continue celebrating and uplifting one another."



### MARIA JIMENEZ-ZEPEDA: CO-CHAIR

Maria is a part of King County Metro Transit in the Mobility Division. Before being elected a Co-Chair, Maria supported KCLx the last two years as the External Community Engagement Chair.

#### What do you look forward to this year in your new role?

"I'm looking forward to seeing new ideas to come from this group & the leadership committee and support those ideas come to fruition!"



### ARTURO ZAZUETA:

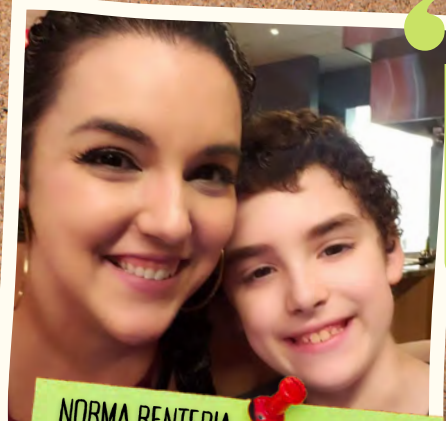
#### EXTERNAL COMMUNITY ENGAGEMENT CHAIR

Arturo joins the leadership committee from Wastewater Treatment Division. Arturo's first introduction to KCLx was at our first Summer Social back in June. After that, he's provided info on different volunteer opportunities that have helped strengthen our relationships together and with the communities we serve!

#### What do you look forward to this year in your new role?

"Growing up in Seattle (specifically Ballard), I didn't see or know many people who look like me. As an adult, I have been actively seeking affinity. I look forward to getting to know folks across King County with similar and shared lived experiences/culture/language! I am so excited to be in community and see what fun events we can participate in."

Pop Quiz - Do you know what that big structure is behind Arturo in his picture? (Let us know your guesses!)

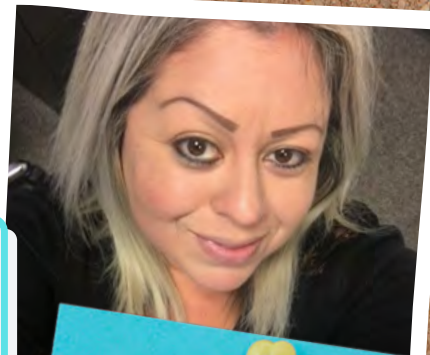


### NORMA RENTERIA LOBO: EVENTS CO-CHAIR

Norma is new to KCLx, so when she first heard about elections she was hesitant to take on a leadership role but after some thought we're all excited to see she's joining as an Events Co-Chair! She works in the Developmental Disabilities and Early Childhood Supports Division as the Early support for Infants & Toddlers Policy & Language Access Lead.

#### What do you look forward to this year in your new role?

"I look forward to my new leadership role with KCLx as a valued team member to expand outreach and serve a steward for all our future events."



### YOLI GERASIMOV: EVENTS CO-CHAIR

Yoli works in the Electronic Home Detention program at the department of Adult & Juvenile Detention. She is so excited to be a part of this group that serves brothers and sisters of our community.