

**Healthy Youth Survey 2010
Report of Participating Schools**

King County (County No. 17)

Grade 12

RMC Research Corporation
111 SW Columbia Street, Suite 1200
Portland, OR 97201

March 2011

Contents

Introduction and Overview	1
Key to the Notes.....	1
Highlights of the Local Results	2
Selected Results by Gender	3
General Information (Items 1–14).....	4
Alcohol, Tobacco, and Other Drug (ATOD) Use.....	6
Lifetime Use (Items 15–23)	6
30-Day Use (Items 24–33)	7
Other Tobacco-Related Questions (Items 34–49)	9
Other Alcohol- and Drug-Related Questions (Items 50–62).....	11
Other Health Concerns	14
Nutrition and Fitness (Items 63–78).....	14
Health Conditions and Health Care (Items 79–88)	17
Sexual Behavior (Items 89–92).....	19
Safety (Items 93–99).....	19
Behaviors Related to Intentional Injuries (Items 100–109).....	20
Depression (Items 110–119)	21
Gambling (Items 120–121)	23
School Climate (Items 122–135).....	23
Quality of Life (Items 136–146).....	25
Risk and Protective Factors	28
Risk and Protective Factor Framework and Reporting Schedule	29
Risk and Protective Factor Scale Results	30
Graph of Scale Results	32
Risk and Protective Factors: Individual Item Results.....	33
Community Domain (Items 147–167)	33
Family Domain (Items 168–185)	35
School Domain (Items 186–203)	38
Peer and Individual Domain (Items 204–256)	41
List of Core Items	50
Item Index.....	50

Healthy Youth Survey 2010 Survey Results

King County (County No. 17), Grade 12

Number of students surveyed:	3273
Number of valid responses:	3120
Estimate of enrolled students:*	6073
Survey participation rate:**	51%

Introduction and Overview

The impact of adolescent health risk behaviors remains a primary concern of citizens throughout the country. Many health problems experienced by adolescents are caused by a very few preventable behaviors. Patterns of alcohol, tobacco, and other drug (ATOD) use and related risk behaviors are often formed during adolescence. These patterns play an important role in health throughout adulthood.

This report presents results from the fall 2010 Healthy Youth Survey in Washington State. This survey was sponsored by the Department of Health (DOH), the Office of Superintendent of Public Instruction, the Department of Social and Health Services, the Department of Commerce, the Family Policy Council and the Liquor Control Board in cooperation with schools throughout the state of Washington.

For each item, local results appear in the first two columns and statewide results appear in the second two columns. The number of valid responses (“*n*”) appears in parentheses for each item. Survey items covering the same topics are grouped together (the item numbering is specific to this report and does not necessarily reflect the item order on the actual survey). The bulleted points and graphs included at the beginning of this report highlight selected findings. Additional information may be found in the *Interpretive Guide* posted to the Healthy Youth Survey web site (<http://www.hys.wa.gov/>).

Survey participation rates can be found on the Healthy Youth Survey web site. The following guidance from DOH may be used when reviewing your results. However, if a particular group(s) of students did not complete the survey and therefore did not contribute to your results, there may be limitations to your results even if you have a high participation rate (i.e., if differences exist between students who *did* and who *did not* complete the survey). There may be value in discussing the potential limitations when using the results in this report.

- 70% or greater participation—Results are probably representative of students in this grade.
- 40–69% participation—Results may be representative of students in this grade.
- Less than 40% participation—Results are likely not representative of students in this grade but do reflect students who completed the survey.

Key to the Notes

The survey was administered in 4 versions: Forms A and B (*or alternate Form NS, identical to Form B but without the sexual behavior questions*) were administered to students in Grades 8, 10, and 12. Forms A and B (or NS) contained a core set of common items (see “List of Core Items” on the last page of this report) and additional items unique to each form. Form C was administered to students in Grade 6. This form consisted primarily of items drawn from Forms A and B but also included some unique items. Several items on each form were optional at the discretion of the school; schools that did not administer the optional items tore off the last page of the survey booklet. The following notes are used throughout this report to document the differences between the items on different versions and indicate the optional items:

- A = wording on Form A
- B = wording on Form B (and NS)
- C = wording on Form C
- † = optional item

* Estimate of enrolled students based on figures from the 2008–2009 school year, provided by OSPI (or later if school not in 2008 enrollment file).

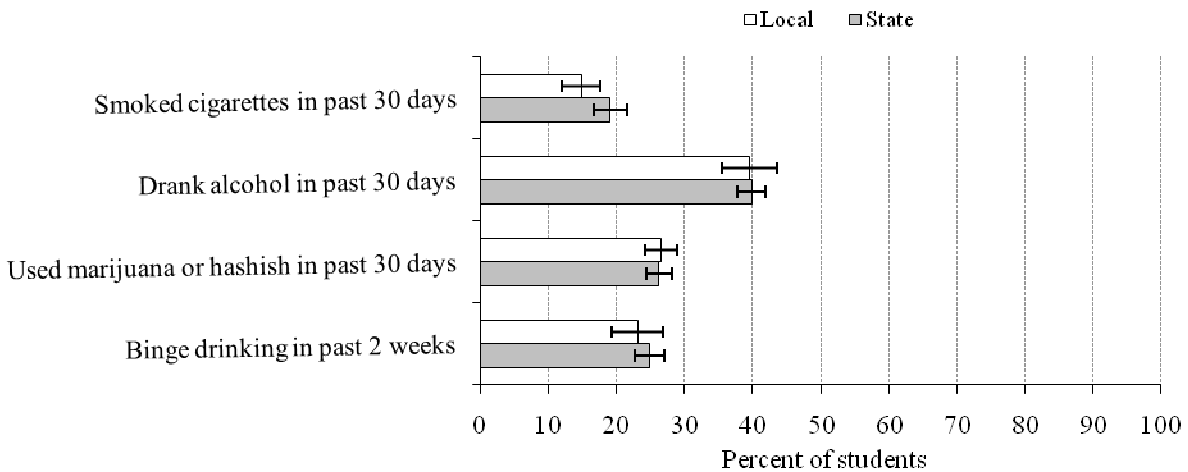
** Participation rate = valid responses ÷ enrolled students (may be >100% if enrollment greater in 2010 than 2008).

Highlights of the Local Results

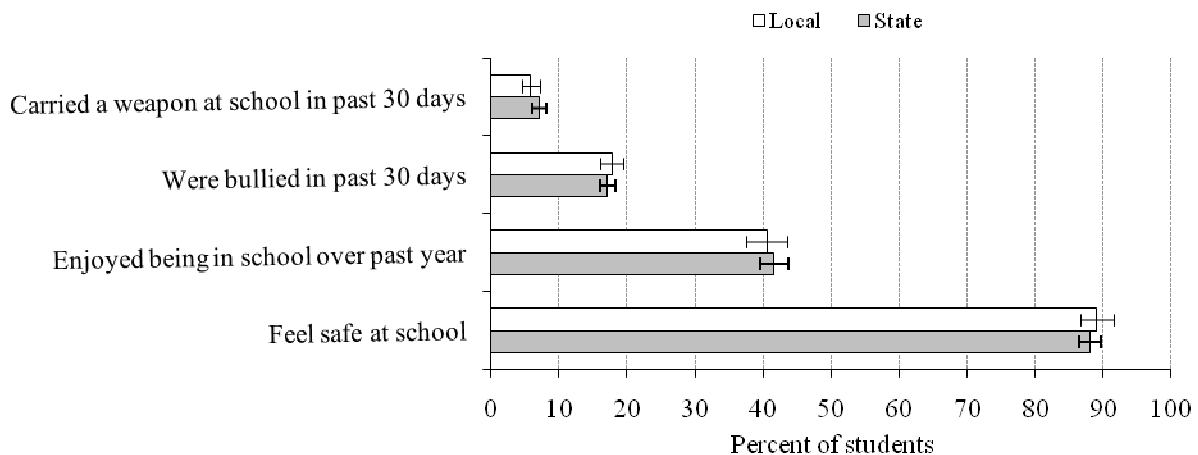
Your students and students statewide reported the following behaviors and attitudes:

	Your students		Statewide	
▪ Smoking cigarettes in the past 30 days (see item 24).	14.8%	(± 2.8%)	19.1%	(± 2.4%)
▪ Drinking alcohol in the past 30 days (see item 28).	39.6	(± 4.1)	39.9	(± 2.1)
▪ Using marijuana or hashish in the past 30 days (see item 29).	26.6	(± 2.4)	26.2	(± 1.9)
▪ Drinking five or more drinks in a row in the past 2 weeks (see item 55).	23.1	(± 3.7)	24.9	(± 2.1)
▪ Carrying a weapon at school in the past 30 days (see item 102).	5.9	(± 1.2)	7.2	(± 1.1)
▪ Being bullied in the past 30 days (see item 122).	17.8	(± 1.6)	17.2	(± 1.1)
▪ Enjoyed being in school over the past year (see item 191).	40.6	(± 3.0)	41.7	(± 2.0)
▪ Feeling safe at school (see item 202).	89.1	(± 2.5)	88.1	(± 1.6)

Substance Use



Bullying and School Climate



Selected Results by Gender

Selected items are presented by gender to highlight any differences between females and males. The p-values reported after each item can be used to examine whether differences in the local data between females and males are statistically significant. A p-value of less than .05 means, for the local results, there is a significant difference between females and males (i.e., the probability that the difference occurred by chance is less than 5%). To ensure student anonymity, local results are suppressed for each item on this page if any cell (e.g., females who reported smoking) represented fewer than 10 students.

During the past 30 days, on how many days did you smoke cigarettes? (See item 24.)

None
1 or more

Local (n = 3,093)		State (n = 6,131)	
Female	Male	Female	Male
89.2%	81.6%	83.9%	78.0%
10.8	18.4	16.1	22.0

Note. $p = .005$ from a chi-square test.

During the past 30 days, on how many days did you drink a glass, can or bottle of alcohol (beer, wine, wine coolers, hard liquor)? (See item 28.)

None
1 or more

Local (n = 3,090)		State (n = 6,122)	
Female	Male	Female	Male
61.8%	59.1%	61.7%	58.6%
38.2	41.0	38.3	41.4

Note. $p = .107$ from a chi-square test.

Think back over the last 2 weeks. How many times have you had five or more drinks in a row? (A drink is a glass of wine, a bottle of beer, a shot glass of liquor, or a mixed drink.) (See item 55.)

None
Once or more

Local (n = 3,076)		State (n = 6,088)	
Female	Male	Female	Male
80.2%	73.9%	78.8%	71.5%
19.8	26.1	21.2	28.5

Note. $p = .004$ from a chi-square test.

During the past 12 months, did you ever feel so sad or hopeless almost every day for two weeks or more in a row that you stopped doing some usual activities? (See item 110.)

No
Yes

Local (n = 3,034)		State (n = 5,948)	
Female	Male	Female	Male
71.6%	75.6%	66.8%	76.4%
28.4	24.4	33.2	23.6

Note. $p = .013$ from a chi-square test.

In the last 30 days, how often have you been bullied? (See item 122.)

I have not been bullied
Once or more

Local (n = 3,066)		State (n = 6,032)	
Female	Male	Female	Male
81.9%	82.6%	81.4%	84.2%
18.1	17.4	18.6	15.8

Note. $p = .558$ from a chi-square test.

I feel safe at my school. (See item 202.)

No
Yes

Local (n = 3,098)		State (n = 6,152)	
Female	Male	Female	Male
8.9%	12.8%	9.8%	13.9%
91.1	87.2	90.3	86.1

Note. $p = .008$ from a chi-square test.

General Information

	Local (n = 3,116)		State (n = 6,195)	
1. How old are you?				
a. 12 or younger	0.2%	(± 0.1%)	0.2%	(± 0.1%)
b. 13	0.0	(± 0.1)	0.0	(± 0.0)
c. 14	0.0	(± 0.0)	0.0	(± 0.0)
d. 15	0.3	(± 0.2)	0.2	(± 0.1)
e. 16	1.6	(± 0.5)	1.5	(± 0.3)
f. 17	72.6	(± 2.5)	70.3	(± 2.2)
g. 18	23.2	(± 1.6)	25.6	(± 1.6)
h. 19 or older	2.2	(± 1.3)	2.3	(± 0.8)

[Item 2 appears only on the elementary version of the survey.]

	Local (n = 3,115)		State (n = 6,192)	
3. Are you:				
a. Female	48.0%	(± 1.4%)	49.1%	(± 1.9%)
b. Male	52.0	(± 1.4)	51.0	(± 1.9)
4. How do you describe yourself? (Select one or more responses.)				
	Local (n = 3,107)		State (n = 6,171)	
a. American Indian or Alaskan Native	15.3%	(± 3.1%)	8.1%	(± 2.8%)
b. Asian or Asian American	1.3	(± 0.5)	1.7	(± 0.4)
c. Black or African-American	5.0	(± 1.7)	3.7	(± 0.8)
d. Hispanic or Latino/Latina	7.4	(± 1.7)	12.2	(± 4.7)
e. Native Hawaiian or other Pacific Islander	2.2	(± 0.8)	2.0	(± 0.7)
f. White or Caucasian	58.7	(± 6.7)	62.3	(± 5.5)
g. Other	5.1	(± 1.3)	4.5	(± 0.9)
<i>More than one race/ethnicity marked</i>	5.3	(± 1.2)	5.6	(± 0.7)

	Local (n = 3,053)		State (n = 6,064)	
5. What language is usually spoken at home?				
a. English	80.0%	(± 4.3%)	82.2%	(± 3.5%)
b. Spanish	5.2	(± 1.5)	8.3	(± 3.2)
c. Russian	1.1	(± 0.6)	0.8	(± 0.3)
d. Ukrainian	0.7	(± 0.5)	0.5	(± 0.2)
e. Vietnamese	2.2	(± 0.8)	1.2	(± 0.5)
f. Chinese	2.0	(± 0.7)	1.2	(± 0.5)
g. Korean	1.6	(± 0.8)	1.4	(± 0.7)
h. Japanese	0.4	(± 0.3)	0.3	(± 0.1)
i. Other	6.9	(± 2.1)	4.2	(± 1.2)

[Item 6 appears only on the elementary version of the survey.]

	Local (n = 3,072)		State (n = 6,063)	
7. How far did your mother get in school?				
a. Did not finish high school	8.7%	(± 2.3%)	11.9%	(± 2.7%)
b. Graduated from high school or GED	17.4	(± 2.9)	22.4	(± 2.3)
c. Had some college or technical training after high school	24.4	(± 2.5)	26.4	(± 1.6)
d. Graduated from a 4-year college	28.3	(± 5.4)	20.5	(± 3.5)
e. Earned an advanced graduate degree	12.8	(± 2.2)	9.7	(± 1.8)
f. Don't know	6.5	(± 1.2)	6.6	(± 0.8)
g. Does not apply	2.1	(± 0.4)	2.5	(± 0.6)

	Local	State
8. How far did your father get in school?	(n = 3,070)	(n = 6,061)
a. Did not finish high school	8.9% (± 2.2%)	12.7% (± 2.6%)
b. Graduated from high school or GED	15.7 (± 3.2)	21.5 (± 2.1)
c. Had some college or technical training after high school	19.2 (± 2.7)	20.8 (± 1.5)
d. Graduated from a 4-year college	27.0 (± 4.7)	18.3 (± 2.8)
e. Earned an advanced graduate degree	17.6 (± 4.1)	13.6 (± 3.0)
f. Don't know	9.2 (± 1.6)	9.8 (± 1.0)
g. Does not apply	2.5 (± 0.5)	3.4 (± 0.6)
9. How many hours per week are you currently working for pay, NOT counting chores around your home, yard work, or babysitting?	Local (n = 1,534)	State (n = 2,989)
a. None, not currently working	63.4% (± 3.4%)	63.3% (± 2.6%)
b. 10 hours or less a week	18.3 (± 2.6)	18.0 (± 2.0)
c. 11-30 hours a week	16.8 (± 2.5)	15.8 (± 1.6)
d. 31-40 hours a week	0.9 (± 0.3)	2.0 (± 0.7)
e. More than 40 hours a week	0.7 (± 0.5)	0.9 (± 0.3)
10. Not counting chores around your home, while working for pay, have you ever been injured badly enough that you needed to go to a nurse, doctor, or hospital?	Local (n = 1,527)	State (n = 2,980)
a. Never worked for pay	42.8% (± 2.8%)	39.8% (± 3.1%)
b. Have worked, but never injured enough to see nurse or doctor	55.3 (± 2.5)	57.3 (± 2.8)
c. Yes, I was injured at work and needed to go to a nurse, doctor or hospital	2.0 (± 0.8)	2.9 (± 0.6)
11. How would you describe the type of place that you currently work? (Pick your main job. Choose one.)	Local (n = 1,524)	State (n = 2,977)
a. Not currently working	57.8% (± 3.0%)	58.9% (± 2.6%)
b. Restaurant (including fast food)	11.4 (± 2.0)	11.3 (± 1.4)
c. Store (including grocery, convenience, clothing, music, or gift stores, gas station)	8.1 (± 1.5)	6.8 (± 1.2)
d. Hospital, clinic, or nursing home	1.1 (± 0.6)	1.2 (± 0.4)
e. Construction	0.9 (± 0.6)	1.8 (± 0.6)
f. Farm or dairy	0.4 (± 0.3)	1.4 (± 0.6)
g. Factory	0.4 (± 0.3)	0.4 (± 0.3)
h. Packing house or food processing	0.1 (± 0.2)	0.3 (± 0.2)
i. Babysitting	3.8 (± 1.3)	2.6 (± 0.9)
j. Yard work	1.7 (± 0.7)	1.9 (± 0.6)
k. Other	14.2 (± 2.5)	13.4 (± 2.0)
12. On an average school night, how many hours do you sleep?	Local (n = 1,527)	State (n = 2,972)
a. 5 hours or less	16.5% (± 1.3%)	14.9% (± 1.5%)
b. About 6 hours	30.4 (± 2.6)	27.1 (± 1.4)
c. About 7 hours	34.5 (± 2.1)	33.7 (± 1.8)
d. About 8 hours	16.0 (± 2.3)	20.2 (± 2.0)
e. 9 hours or more	2.6 (± 1.0)	4.0 (± 0.9)

13.	On an average weekend night (Friday and Saturday night), how many hours do you sleep?	Local (n = 1,522)	State (n = 2,971)
	a. 5 hours or less	9.3% (± 1.7%)	14.3% (± 2.3%)
	b. About 6 hours	7.3 (± 1.4)	10.5 (± 1.4)
	c. About 7 hours	10.7 (± 1.5)	12.4 (± 1.2)
	d. About 8 hours	26.8 (± 2.0)	25.5 (± 1.7)
	e. 9 hours or more	45.9 (± 2.5)	37.3 (± 2.9)
14.	How honest were you in filling out this survey?	Local (n = 2,966)	State (n = 5,712)
	a. I was very honest	86.4% (± 1.3%)	87.2% (± 1.1%)
	b. I was honest pretty much of the time	11.6 (± 1.2)	11.2 (± 0.8)
	c. I was honest some of the time	2.1 (± 0.6)	1.6 (± 0.5)
	d. I was honest once in a while		Surveys pulled
	e. I was not honest at all		Surveys pulled

Alcohol, Tobacco, and Other Drug Use

Alcohol, tobacco, and other drug use has been a major concern in this country for many years. The consequences of ATOD use are well known. In the short term, ATOD use interferes with positive physical, emotional, and social development. In the long term, ATOD use is associated with delinquency and criminal activity, unintended injuries, and a variety of health complications including shorter life expectancy. The economic costs of ATOD use are enormous (in Washington State an estimated \$1.81 billion in 1990 \$2.54 billion in 1996, and \$5.21 billion in 2005). Tobacco use is the world's leading cause of preventable death, disease, and disability. This section provides information about lifetime ATOD use (which in part reflects experimental use), use in the past 30 days (i.e., current use), and other tobacco-, alcohol-, and drug-related issues.

Lifetime Use

15.	Have you ever smoked a cigarette, even just a puff? (Computed from item 210.)	Local (n = 1,520)	State (n = 3,005)
	a. No	66.6% (± 3.8%)	59.7% (± 3.4%)
	b. Yes	33.4 (± 3.8)	40.3 (± 3.4)
16.	Have you ever had more than a sip or two of beer, wine, or hard liquor (for example, vodka, whiskey, or gin)? (Computed from item 211 or 212.)	Local (n = 3,078)	State (n = 6,074)
	a. No	32.7% (± 2.4%)	29.4% (± 1.9%)
	b. Yes	67.3 (± 2.4)	70.6 (± 1.9)
17.	Have you ever smoked marijuana? (Computed from item 208 or 209.)	Local (n = 3,082)	State (n = 6,082)
	a. No	56.9% (± 2.9%)	54.5% (± 2.3%)
	b. Yes	43.2 (± 2.9)	45.5 (± 2.3)

Have you ever, even once in your life:

18.	Used inhalants?	Local (n = 1,516)	State (n = 2,996)
	a. No	90.8% (± 1.7%)	89.5% (± 1.5%)
	b. Yes	9.2 (± 1.7)	10.6 (± 1.5)

	Local	State
19. Used heroin?	(n = 1,515)	(n = 2,994)
a. No	96.4% (± 1.0%)	96.0% (± 0.8%)
b. Yes	3.6 (± 1.0)	4.0 (± 0.8)
20. Used methamphetamines (meth, crystal meth, ice, crank)? Do not include other types of amphetamines.	Local (n = 1,515)	State (n = 2,995)
a. No	96.0% (± 1.2%)	95.4% (± 1.0%)
b. Yes	4.0 (± 1.2)	4.6 (± 1.0)
21. Used cocaine?	Local (n = 1,517)	State (n = 2,994)
a. No	92.6% (± 1.9%)	91.3% (± 1.4%)
b. Yes	7.4 (± 1.9)	8.8 (± 1.4)
22. Used steroids (muscle builders) without a doctor's prescription?	Local (n = 1,516)	State (n = 2,991)
a. No	96.5% (± 1.3%)	96.6% (± 0.9%)
b. Yes	3.5 (± 1.3)	3.4 (± 0.9)

[Item 23 appears only on the elementary version of the survey.]

30-Day Use (Use in the Past 30 Days)

During the past 30 days, on how many days did you:

	Local	State
24. Smoke cigarettes?	(n = 3,097)	(n = 6,137)
a. None	85.2% (± 2.8%)	80.9% (± 2.4%)
b. 1–2 days	4.2 (± 1.0)	5.5 (± 0.7)
c. 3–5 days	2.7 (± 0.9)	2.6 (± 0.4)
d. 6–9 days	1.7 (± 0.4)	2.1 (± 0.4)
e. 10–29 days	2.8 (± 0.7)	3.5 (± 0.6)
f. All 30 days	3.4 (± 1.4)	5.5 (± 1.4)
<i>Any use in past 30 days</i>	14.8 (± 2.8)	19.1 (± 2.4)
25. Use chewing tobacco, snuff, or dip?	Local (n = 3,096)	State (n = 6,135)
a. None	94.2% (± 1.1%)	91.2% (± 1.5%)
b. 1–2 days	1.9 (± 0.6)	3.2 (± 0.6)
c. 3–5 days	1.2 (± 0.3)	1.4 (± 0.3)
d. 6–9 days	1.0 (± 0.2)	1.2 (± 0.3)
e. 10–29 days	0.9 (± 0.3)	1.4 (± 0.5)
f. All 30 days	0.8 (± 0.4)	1.6 (± 0.5)
<i>Any use in past 30 days</i>	5.8 (± 1.1)	8.8 (± 1.5)
26. Smoke cigars, cigarillos, or little cigars? [†]	Local (n = 1,563)	State (n = 3,090)
a. 0 days	86.5% (± 3.0%)	82.8% (± 2.4%)
b. 1–2 days	7.6 (± 2.1)	9.6 (± 1.5)
c. 3–9 days	3.6 (± 1.1)	4.4 (± 1.0)
d. 10–29 days	1.4 (± 0.4)	1.8 (± 0.4)
e. All 30 days	0.9 (± 0.6)	1.4 (± 0.5)
<i>Any use in past 30 days</i>	13.5 (± 3.0)	17.3 (± 2.4)

27.	Use tobacco that tastes like candy, fruit, or alcohol (tobacco includes: little cigars, bidis, cloves, chew, spit, snus, hookah)?	Local (n = 1,563)	State (n = 3,090)
	a. 0 days	83.3% (± 2.5%)	81.3% (± 1.8%)
	b. 1–2 days	8.6 (± 1.7)	9.4 (± 1.1)
	c. 3–9 days	5.8 (± 1.4)	6.2 (± 1.0)
	d. 10–29 days	1.9 (± 0.6)	2.2 (± 0.5)
	e. All 30 days	0.5 (± 0.3)	0.9 (± 0.4)
	<i>Any use in past 30 days</i>	16.7 (± 2.5)	18.7 (± 1.8)
28.	Drink a glass, can or bottle of alcohol (beer, wine, wine coolers, hard liquor)?	Local (n = 3,093)	State (n = 6,127)
	a. None	60.4% (± 4.1%)	60.1% (± 2.1%)
	b. 1–2 days	22.3 (± 2.4)	21.0 (± 1.4)
	c. 3–5 days	10.2 (± 1.7)	11.3 (± 1.0)
	d. 6–9 days	4.2 (± 1.1)	4.4 (± 0.7)
	e. 10 or more days	2.9 (± 0.9)	3.1 (± 0.7)
	<i>Any use in past 30 days</i>	39.6 (± 4.1)	39.9 (± 2.1)
29.	Use marijuana or hashish (grass, hash, pot)?	Local (n = 3,092)	State (n = 6,127)
	a. None	73.5% (± 2.4%)	73.8% (± 1.9%)
	b. 1–2 days	9.0 (± 1.5)	9.1 (± 0.9)
	c. 3–5 days	4.6 (± 0.9)	4.6 (± 0.6)
	d. 6–9 days	3.0 (± 0.3)	2.7 (± 0.4)
	e. 10 or more days	10.0 (± 1.9)	9.8 (± 1.4)
	<i>Any use in past 30 days</i>	26.6 (± 2.4)	26.2 (± 1.9)
30.	Not counting alcohol, tobacco, or marijuana, use another illegal drug?	Local (n = 3,091)	State (n = 6,121)
	a. None	92.8% (± 1.1%)	92.5% (± 0.9%)
	b. 1–2 days	3.6 (± 0.7)	3.7 (± 0.5)
	c. 3–5 days	1.8 (± 0.5)	1.9 (± 0.4)
	d. 6–9 days	0.7 (± 0.3)	0.8 (± 0.2)
	e. 10 or more days	1.1 (± 0.4)	1.1 (± 0.3)
	<i>Any use in past 30 days</i>	7.2 (± 1.1)	7.6 (± 0.9)
31.	Use any illegal drug, including marijuana? (Computed from items 29 and 30.)	Local (n = 3,088)	State (n = 6,116)
	None	72.4% (± 2.6%)	72.6% (± 1.9%)
	1 or more	27.6 (± 2.6)	27.4 (± 1.9)
	<i>Any use in the past 30 days</i>	27.6 (± 2.6)	27.4 (± 1.9)
32.	Use a pain killer to get high, like Vicodin, OxyContin (sometimes called Oxy or OC) or Percocet (sometimes called Percs)?	Local (n = 3,091)	State (n = 6,112)
	a. None	93.2% (± 1.5%)	92.2% (± 1.2%)
	b. 1–2 days	4.1 (± 1.1)	4.2 (± 0.6)
	c. 3–5 days	1.7 (± 0.5)	2.0 (± 0.5)
	d. 6–9 days	0.6 (± 0.2)	0.6 (± 0.2)
	e. 10 or more days	0.5 (± 0.3)	0.9 (± 0.3)
	<i>Any use in past 30 days</i>	6.8 (± 1.5)	7.8 (± 1.2)

33. Some kids take a medicine prescribed by their doctor to help with hyperactivity or focus (ADD). Some names for this medicine are Ritalin, Adderall, or Concerta. In the past 30 days have you taken one of these drugs?			
	Local (n = 1,526)		State (n = 3,021)
a. No	88.7% (± 1.3%)		90.3% (± 1.1%)
b. Yes—prescribed by my doctor for me	7.0 (± 1.2)		5.6 (± 0.9)
c. Yes—but NOT prescribed by a doctor for me	4.4 (± 0.8)		4.1 (± 0.8)

Other Tobacco-Related Questions

34. If one of your best friends offered you a cigarette, would you smoke it?			
	Local (n = 3,082)		State (n = 6,100)
a. Definitely no	72.0% (± 2.8%)		67.6% (± 2.3%)
b. Probably no	12.2 (± 0.8)		13.4 (± 0.9)
c. Probably yes	9.4 (± 1.3)		10.3 (± 1.0)
d. Definitely yes	6.4 (± 1.4)		8.7 (± 1.4)
35. Do you think that you will smoke a cigarette anytime in the next year?			
	Local (n = 3,080)		State (n = 6,096)
a. Definitely no	68.6% (± 3.0%)		64.5% (± 2.1%)
b. Probably no	13.1 (± 1.1)		12.8 (± 0.8)
c. Probably yes	10.2 (± 1.4)		12.2 (± 1.1)
d. Definitely yes	8.2 (± 1.8)		10.6 (± 1.6)
36. Have made a firm commitment to not smoke cigarettes; i.e., not susceptible to smoking. (Computed from both items 34 and 35).			
	Local (n = 3,081)		State (n = 6,100)
a. Yes, not susceptible	66.0% (± 3.3%)		62.0% (± 2.3%)
b. No, susceptible	34.0 (± 3.3)		38.0 (± 2.3)
37. Do you think young people risk harming themselves if they smoke 1–5 cigarettes a day?			
	Local (n = 1,561)		State (n = 3,080)
a. Definitely no	4.3% (± 1.0%)		4.7% (± 0.8%)
b. Probably no	2.6 (± 0.6)		3.0 (± 0.6)
c. Probably yes	16.8 (± 1.8)		21.2 (± 1.5)
d. Definitely yes	76.3 (± 2.4)		71.1 (± 2.1)
38. During the past year in school, how many times did you get information in classes about the dangers of tobacco use?			
	Local (n = 1,560)		State (n = 3,079)
a. None	49.1% (± 4.7%)		50.8% (± 3.4%)
b. Once	23.2 (± 2.9)		22.4 (± 2.2)
c. 2 or 3 times	19.7 (± 2.4)		18.9 (± 2.1)
d. 4 or more times	8.0 (± 1.6)		7.8 (± 1.3)
39. Do you think that rules about not using tobacco at your school are usually enforced?			
	Local (n = 1,560)		State (n = 3,082)
a. Definitely no	11.0% (± 2.3%)		12.2% (± 1.4%)
b. Probably no	15.4 (± 3.6)		17.1 (± 2.3)
c. Probably yes	44.2 (± 3.0)		42.9 (± 2.1)
d. Definitely yes	29.4 (± 4.6)		27.8 (± 3.0)

40.	During the past 30 days, on how many days did you use tobacco (cigarettes, cigars, or chew/dip) on school property?	Local (n = 1,559)	State (n = 3,080)
	a. 0 days	93.6% (± 1.9%)	91.3% (± 1.4%)
	b. 1–2 days	2.6 (± 1.1)	3.4 (± 0.7)
	c. 3–9 days	1.7 (± 0.8)	2.2 (± 0.6)
	d. 10–29 days	1.0 (± 0.5)	1.8 (± 0.5)
	e. All 30 days	1.2 (± 0.5)	1.2 (± 0.4)
41.	Do you think the smoke from other people's cigarettes (secondhand smoke) is harmful to you?	Local (n = 1,520)	State (n = 2,945)
	a. Definitely no	6.3% (± 1.4%)	6.8% (± 1.4%)
	b. Probably no	3.8 (± 0.9)	4.7 (± 0.7)
	c. Probably yes	23.7 (± 2.5)	26.2 (± 1.7)
	d. Definitely yes	66.3 (± 2.5)	62.4 (± 2.1)
42.	Some tobacco companies make t-shirts, lighters, or other items that people can buy or receive for free. During the past 12 months, did you buy or receive anything that has a tobacco company name or picture on it?	Local (n = 1,519)	State (n = 2,945)
	a. No	90.6% (± 1.8%)	88.7% (± 1.6%)
	b. Yes	9.4 (± 1.8)	11.3 (± 1.6)
43.	During the past 7 days, on how many days were you in the same room with someone who was smoking cigarettes?	Local (n = 1,517)	State (n = 2,942)
	a. 0 days	65.3% (± 4.4%)	59.6% (± 3.7%)
	b. 1–2 days	19.1 (± 2.3)	19.5 (± 1.1)
	c. 3–4 days	6.8 (± 1.8)	8.4 (± 1.4)
	d. 5–6 days	3.2 (± 1.1)	4.0 (± 0.9)
	e. 7 days	5.7 (± 1.9)	8.5 (± 1.7)
44.	Does anyone who lives with you now smoke cigarettes?	Local (n = 1,514)	State (n = 2,930)
	a. No	76.5% (± 2.9%)	71.3% (± 3.1%)
	b. Yes	23.5 (± 2.9)	28.7 (± 3.1)
45.	During the past 7 days, on how many days did you ride in a car with someone who was smoking cigarettes?	Local (n = 1,518)	State (n = 2,937)
	a. 0 days	76.6% (± 4.3%)	71.0% (± 3.5%)
	b. 1-2 days	12.5 (± 1.9)	14.4 (± 1.4)
	c. 3-4 days	5.0 (± 1.5)	5.9 (± 1.3)
	d. 5-6 days	2.0 (± 0.9)	3.1 (± 0.7)
	e. 7 days	4.0 (± 1.2)	5.7 (± 1.3)
46.	Has either of your parents (or guardians) discussed the dangers of tobacco use with you?	Local (n = 1,509)	State (n = 2,919)
	a. Mother (or female guardian) only	15.6% (± 2.2%)	17.0% (± 1.4%)
	b. Father (or male guardian) only	3.8 (± 0.6)	4.7 (± 0.6)
	c. Both	50.8 (± 3.9)	49.0 (± 2.4)
	d. Neither	29.8 (± 2.7)	29.4 (± 2.0)

47.	Which of these best describes the rules about smoking inside the house where you live? Smoking is...	Local (n = 1,514)	State (n = 2,933)
	a. Never allowed inside my house	88.3% (± 2.2%)	86.0% (± 2.0%)
	b. Allowed only at some times or in some places	8.4 (± 1.8)	9.2 (± 1.4)
	c. Always allowed inside my house	3.3 (± 1.0)	4.8 (± 1.0)
48.	During the past 30 days, have you seen or heard commercials on TV, the Internet, or on the radio about the dangers of cigarette smoking?	Local (n = 1,512)	State (n = 2,927)
	a. Not in the past 30 days	33.7% (± 2.8%)	31.7% (± 1.7%)
	b. 1–3 times in the past 30 days	32.1 (± 2.5)	30.8 (± 1.8)
	c. 1–3 times per week	16.4 (± 1.4)	18.0 (± 1.3)
	d. Daily or almost daily	12.4 (± 1.9)	13.9 (± 1.3)
	e. More than once a day	5.3 (± 1.0)	5.5 (± 1.1)
49.	During the past 30 days, how did you usually get your own tobacco? (Choose only one answer.)	Local (n = 1,505)	State (n = 2,911)
	a. I did not use tobacco during the past 30 days	79.7% (± 3.8%)	75.9% (± 2.6%)
	b. I bought it in a store such as a convenience store, supermarket, discount store or gas station	8.9 (± 2.4)	9.6 (± 1.6)
	c. I bought it from a vending machine	0.6 (± 0.4)	0.9 (± 0.4)
	d. I gave someone else money to buy them for me	3.8 (± 0.9)	5.3 (± 1.0)
	e. I borrowed (or bummed) them from someone else	3.6 (± 1.1)	3.5 (± 0.8)
	f. A person 18 years old or older gave them to me	1.5 (± 0.6)	2.2 (± 0.5)
	g. I took them from a store or a family member	0.7 (± 0.3)	0.7 (± 0.3)
	h. I got them some other way	1.3 (± 0.4)	1.8 (± 0.4)

Other Alcohol- and Drug-Related Questions

50.	During the past 30 days, have you seen or heard advertisements on TV, the Internet, the radio, or magazines about the dangers of kids drinking alcohol?	Local (n = 1,536)	State (n = 3,065)
	a. Not in the past 30 days	25.4% (± 2.0%)	29.0% (± 1.9%)
	b. 1–3 times in the past 30 days	35.1 (± 2.2)	34.6 (± 1.6)
	c. 1–3 times per week	19.9 (± 2.0)	18.0 (± 1.3)
	d. Daily or almost daily	13.1 (± 1.7)	13.0 (± 0.8)
	e. More than once a day	6.6 (± 1.8)	5.4 (± 1.0)
51.	NOT including talks on drinking and driving, in the past year have your parents or guardians talked to you about why you should not drink alcohol?	Local (n = 1,530)	State (n = 3,068)
	a. Yes, a number of times	29.4% (± 1.7%)	30.5% (± 2.0%)
	b. Yes, once	20.6 (± 2.0)	18.5 (± 1.4)
	c. No	38.9 (± 2.0)	39.1 (± 1.9)
	d. I don't remember	11.1 (± 1.1)	11.9 (± 0.8)
52.	During the past year in school, how many times did you get information in classes about reasons not to use alcohol and other drugs?	Local (n = 1,531)	State (n = 3,060)
	a. None	32.9% (± 4.7%)	32.5% (± 3.2%)
	b. Once	29.6 (± 2.0)	29.2 (± 1.5)
	c. 2 or 3 times	27.4 (± 4.1)	27.7 (± 2.6)
	d. 4 or more times	10.1 (± 2.4)	10.7 (± 1.8)

53.	Do you think that rules about not drinking alcohol or using drugs at your school are usually enforced?	Local (n = 1,556)	State (n = 3,072)
a.	Definitely no	7.7% (± 1.8%)	9.2% (± 1.3%)
b.	Probably no	12.3 (± 1.6)	12.4 (± 1.0)
c.	Probably yes	39.9 (± 2.1)	38.5 (± 1.6)
d.	Definitely yes	40.2 (± 3.2)	39.9 (± 2.5)
54.	How much do you think people risk harming themselves if they smoke marijuana occasionally?	Local (n = 1,532)	State (n = 3,066)
a.	No risk	25.5% (± 2.5%)	24.9% (± 1.9%)
b.	Slight risk	25.3 (± 3.0)	25.7 (± 2.2)
c.	Moderate risk	26.2 (± 2.4)	25.6 (± 1.7)
d.	Great risk	20.6 (± 3.1)	21.2 (± 2.0)
e.	Not sure	2.4 (± 1.3)	2.6 (± 0.8)
55.	Think back over the last 2 weeks. How many times have you had five or more drinks in a row? (A drink is a glass of wine, a bottle of beer, a shot glass of liquor, or a mixed drink.)	Local (n = 3,080)	State (n = 6,094)
a.	None	76.9% (± 3.7%)	75.1% (± 2.1%)
b.	Once	10.7 (± 1.6)	10.6 (± 0.7)
c.	Twice	6.4 (± 1.5)	6.7 (± 0.9)
d.	3–5 times	4.0 (± 0.8)	5.0 (± 1.0)
e.	6–9 times	0.9 (± 0.5)	1.1 (± 0.3)
f.	10 or more times	1.1 (± 0.5)	1.5 (± 0.3)
56.	If you had to guess, how many students in your grade at school drank alcohol during the past 30 days?	Local (n = 1,523)	State (n = 3,045)
a.	0 out of 10 (none)	2.8% (± 1.4%)	2.6% (± 0.8%)
b.	1 out of 10	3.9 (± 1.2)	3.7 (± 0.8)
c.	2 out of 10	5.5 (± 1.3)	5.5 (± 0.9)
d.	3 out of 10	8.8 (± 2.1)	9.3 (± 1.3)
e.	4 out of 10	11.1 (± 2.2)	11.2 (± 1.4)
f.	5 out of 10 (about half)	19.7 (± 2.5)	21.1 (± 1.8)
g.	6 out of 10	12.6 (± 2.4)	12.6 (± 1.5)
h.	7 out of 10	14.1 (± 2.5)	13.1 (± 1.2)
i.	8 out of 10	12.0 (± 2.2)	11.3 (± 1.1)
j.	9 out of 10	5.5 (± 1.3)	5.5 (± 0.8)
k.	10 out of 10 (all)	4.1 (± 1.4)	4.1 (± 0.9)
57.	Think about the students in your school. If you had to guess, how wrong do most students in your grade think it is to drink alcohol regularly?	Local (n = 1,494)	State (n = 2,940)
a.	Very wrong	13.2% (± 2.5%)	11.3% (± 1.8%)
b.	Wrong	17.3 (± 2.9)	17.4 (± 1.6)
c.	A little bit wrong	39.4 (± 2.5)	40.7 (± 2.4)
d.	Not wrong at all	30.2 (± 4.2)	30.7 (± 2.5)
58.	Drinking Categories Variable (Computed from items 28 and 55).	Local (n = 3,082)	State (n = 6,093)
a.	No alcohol use	59.2% (± 4.1%)	58.4% (± 2.2%)
b.	1-2 days and no binges	14.3 (± 1.6)	13.1 (± 1.2)
c.	3-5 days or 1 binge	12.2 (± 1.9)	12.4 (± 0.8)
d.	6+ days or 2+ binges	14.3 (± 2.7)	16.0 (± 2.0)

59.	How many times in the past year (12 months) have you been drunk or high at school?				
		Local (n = 3,085)		State (n = 6,091)	
	a. Never	82.4%	(± 1.7%)	81.4%	(± 1.5%)
	b. 1–2 times	7.2	(± 0.9)	7.2	(± 0.6)
	c. 3–5 times	3.3	(± 0.7)	4.0	(± 0.5)
	d. 6–9 times	1.5	(± 0.4)	1.6	(± 0.4)
	e. 10 or more times	5.5	(± 1.1)	5.9	(± 0.9)
60.	During the past 30 days, how did you usually get alcohol (beer, wine, or hard liquor)? Choose all that apply.				
	<i>Percentages do not total 100% due to multiple responses.</i>				
		Local (n = 1,515)		State (n = 2,993)	
	a. I did not get alcohol in the past 30 days	60.9%	(± 5.2%)	60.9%	(± 2.5%)
	b. I bought it from a store	3.4	(± 1.3)	3.1	(± 0.8)
	c. I got it from friends	19.5	(± 2.9)	17.4	(± 1.6)
	d. I got it at a party	15.4	(± 2.9)	14.5	(± 1.4)
	e. I got it from an older brother or sister	4.1	(± 0.7)	3.5	(± 0.7)
	f. I gave money to someone to get it for me	10.0	(± 2.3)	10.1	(± 1.3)
	g. I took it from home without my parents' permission	4.8	(± 0.9)	4.0	(± 0.7)
	h. I got it at home with my parents' permission	4.4	(± 0.9)	4.6	(± 0.7)
	i. I got it at a family celebration, ceremony, or party	3.8	(± 0.6)	3.7	(± 0.5)
	j. I got it some other way	4.8	(± 1.2)	5.0	(± 0.7)
61.	If you have EVER used pain killers to get high, where did you usually get them?				
		Local (n = 1,520)		State (n = 2,998)	
	a. I did not use pain killers to get high	83.8%	(± 2.3%)	82.0%	(± 1.9%)
	b. I used my own prescriptions (from a doctor or dentist)	5.0	(± 0.9)	5.7	(± 0.9)
	c. A family member gave them to me	1.1	(± 0.4)	1.4	(± 0.5)
	d. I took them from my home or someone else's home without permission	1.5	(± 0.4)	1.6	(± 0.5)
	e. I got them from a friend	5.6	(± 1.2)	5.8	(± 1.0)
	f. I got them from an acquaintance	1.1	(± 0.7)	1.1	(± 0.4)
	g. I got them from a drug dealer	1.0	(± 0.5)	1.3	(± 0.5)
	h. I got them from the internet	0.2	(± 0.2)	0.2	(± 0.1)
	i. I got them some other way	0.8	(± 0.5)	0.9	(± 0.3)
62.	During the last year, have you felt that you needed help (such as counseling or treatment) for your alcohol, tobacco, or other drug use?				
		Local (n = 1,522)		State (n = 3,020)	
	a. I have not used alcohol or other drugs	55.9%	(± 3.4%)	54.4%	(± 2.0%)
	b. I have used alcohol and/or drugs but I haven't needed help	38.7	(± 3.4)	38.9	(± 1.8)
	c. Yes, I felt I have needed help	2.9	(± 0.9)	3.0	(± 0.7)
	d. Not sure	2.6	(± 0.5)	3.7	(± 0.9)

Other Health Concerns

This section provides results regarding other health concerns including nutrition and fitness, health conditions and health care, safety, behaviors related to intentional injury, depression, and gambling behavior. Proper nutrition and exercise are critical components of a healthy life, as is access to preventive health care. Safety-related behaviors, such as wearing a seat belt when in a moving vehicle, can profoundly influence the outcome of an accident. Injury is the leading cause of death for adolescents aged 10 to 19, and violence contributes to injury-related deaths. People who are depressed experience a range of symptoms, and depression is associated with suicidal behavior.

Nutrition and Fitness

63. Obese: “Obese” includes students who are in the top 5% for body mass index by age and gender based on growth charts developed by the Centers for Disease Control and Prevention (2000). “Overweight” includes students who are in the top 15% but not the top 5%. (Computed from numeric responses to “How tall are you without your shoes on?” and “How much do you weigh without your shoes on?”)

	Local (n = 1,480)	State (n = 2,913)
Obese	8.0% (± 1.5%)	10.5% (± 1.4%)
Overweight	10.7 (± 1.9)	13.9 (± 1.9)
Not overweight	81.3 (± 2.0)	75.6 (± 2.6)

Note. Results are suppressed for building-level reports.

64. Which of the following are you trying to do about your weight?

	Local (n = 1,556)	State (n = 3,054)
a. I am not trying to do anything about my weight	27.8% (± 2.0%)	27.3% (± 1.7%)
b. Lose weight	38.4 (± 2.2)	41.8 (± 2.0)
c. Gain weight	17.0 (± 2.0)	14.8 (± 1.3)
d. Stay the same weight	16.8 (± 2.1)	16.1 (± 1.4)

65. How often do you eat dinner with your family?

	Local (n = 1,560)	State (n = 3,071)
a. Never	5.6% (± 1.2%)	8.2% (± 1.2%)
b. Rarely	15.2 (± 2.3)	16.3 (± 1.4)
c. Sometimes	23.5 (± 2.3)	23.7 (± 1.9)
d. Most of the time	37.7 (± 3.1)	33.8 (± 2.4)
e. Always	18.0 (± 1.9)	18.0 (± 1.6)

66. How often in the past 12 months did you or your family have to cut meal size or skip meals because there wasn't enough money for food?[†]

	Local (n = 1,055)	State (n = 2,435)
a. Almost every month	7.5% (± 2.7%)	6.8% (± 1.4%)
b. Some months but not every month	5.0 (± 1.5)	7.3 (± 1.3)
c. Only 1–2 months	4.5 (± 0.7)	5.1 (± 0.7)
d. Did not have to skip or cut the size of meals	83.0 (± 3.4)	80.8 (± 2.4)

67. Did you eat breakfast today?

	Local (n = 1,562)	State (n = 3,069)
a. Yes	61.9% (± 4.0%)	61.4% (± 2.4%)
b. No	38.1 (± 4.0)	38.6 (± 2.4)

68.	How many sodas or pops did you drink yesterday? (Do not count diet soda.)	Local (n = 1,557)	State (n = 3,067)
a.	None	67.2% (± 2.5%)	61.1% (± 2.6%)
b.	1	20.8 (± 1.5)	25.2 (± 2.1)
c.	2	7.3 (± 1.5)	8.2 (± 1.1)
d.	3	2.3 (± 0.5)	2.8 (± 0.7)
e.	4 or more	2.4 (± 0.7)	2.6 (± 0.7)
69.	During the past 7 days, how many times did you drink regular soda, sports drinks (such as Gatorade) and other flavored sweetened drinks (such as Snapple or SoBe) at school (including any after-school and weekend activities)? Do not include diet drinks.	Local (n = 1,558)	State (n = 3,071)
a.	0 times	34.9% (± 2.2%)	31.3% (± 2.5%)
b.	1–3 times	36.5 (± 2.3)	37.2 (± 1.9)
c.	4–6 times	15.2 (± 1.9)	15.7 (± 1.3)
d.	7–9 times	5.5 (± 1.3)	5.8 (± 0.9)
e.	10 times or more	8.0 (± 1.2)	10.0 (± 1.4)
70.	During the past 7 days, where did you usually get the soda or other sweetened drinks that you drank at school? (Choose only one answer.)	Local (n = 1,557)	State (n = 3,069)
a.	I did not drink sodas, sports drinks, or other flavored drinks at school	40.0% (± 2.4%)	35.7% (± 2.2%)
b.	I brought them from home	25.4 (± 1.6)	25.1 (± 1.7)
c.	I got them from friends	3.9 (± 0.9)	3.9 (± 0.8)
d.	I bought them at school	17.2 (± 3.3)	18.9 (± 3.3)
e.	Other	13.5 (± 3.0)	16.5 (± 3.0)

On how many of the past 7 days did you:

71.	In the past 7 days, on how many days were you physically active for a total of at least 60 minutes per day? (Add up all the time you spent in any kind of physical activity that increases your heart rate or makes you breathe hard some of the time.)	Local (n = 1,559)	State (n = 3,068)
a.	0 days	16.0% (± 1.7%)	15.8% (± 1.4%)
b.	1 day	9.7 (± 1.5)	8.6 (± 1.1)
c.	2 days	11.8 (± 1.8)	10.1 (± 1.3)
d.	3 days	10.7 (± 1.0)	10.0 (± 0.9)
e.	4 days	11.2 (± 1.3)	9.4 (± 1.3)
f.	5 days	17.1 (± 2.0)	15.6 (± 1.4)
g.	6 days	9.1 (± 1.3)	9.8 (± 1.2)
h.	7 days	14.3 (± 2.2)	20.7 (± 2.4)
72.	On average how many days a week do you walk to or from school?	Local (n = 1,558)	State (n = 3,065)
a.	Never	75.5% (± 5.2%)	74.6% (± 3.9%)
b.	1–2	9.9 (± 2.1)	8.7 (± 1.4)
c.	3–4	3.2 (± 0.7)	4.1 (± 0.8)
d.	I walk every day	11.4 (± 3.0)	12.6 (± 2.3)

73.	On average how many days a week do you ride a bicycle to or from school?	Local (n = 1,557)	State (n = 3,064)
	a. Never	95.7% (± 1.2%)	95.2% (± 0.9%)
	b. 1–2	2.0 (± 0.8)	2.3 (± 0.6)
	c. 3–4	1.0 (± 0.6)	1.1 (± 0.4)
	d. I bike every day	1.3 (± 0.5)	1.3 (± 0.3)
74.	On an average school day, how many hours do you watch TV, including videos and DVDs?	Local (n = 1,560)	State (n = 3,065)
	a. I do not watch TV on an average school day	15.5% (± 1.7%)	14.5% (± 1.2%)
	b. Less than 1 hour per day	21.5 (± 2.5)	19.7 (± 1.8)
	c. 1 hour per day	19.6 (± 2.2)	18.1 (± 1.5)
	d. 2 hours per day	21.1 (± 1.7)	21.4 (± 1.4)
	e. 3 hours per day	11.5 (± 1.3)	14.6 (± 1.5)
	f. 4 hours per day	5.6 (± 1.0)	6.1 (± 0.8)
	g. 5 or more hours per day	5.2 (± 1.8)	5.6 (± 1.3)
75.	On an average school day, how many hours do you play video games or use a computer for fun? (Include activities such as Nintendo, Game Boy, Play Station, computer games, and the Internet.)	Local (n = 1,556)	State (n = 3,066)
	a. I do not play video games or use a computer for fun on an average school day	20.1% (± 2.1%)	23.5% (± 1.7%)
	b. Less than 1 hour per day	18.6 (± 2.1)	21.8 (± 2.0)
	c. 1 hour per day	18.8 (± 2.2)	16.7 (± 1.5)
	d. 2 hours per day	18.0 (± 1.7)	15.3 (± 1.1)
	e. 3 hours per day	11.4 (± 1.5)	10.9 (± 1.4)
	f. 4 hours per day	5.3 (± 1.3)	4.8 (± 0.8)
	g. 5 or more hours per day	7.9 (± 1.3)	7.0 (± 0.9)
76.	In an average week when you are in school, on how many days do you go to physical education (PE) classes?	Local (n = 1,554)	State (n = 3,059)
	a. 0 days	66.6% (± 5.7%)	62.3% (± 4.2%)
	b. 1 day	2.2 (± 1.8)	1.5 (± 0.9)
	c. 2 days	1.3 (± 0.8)	1.5 (± 0.5)
	d. 3 days	4.5 (± 6.4)	6.7 (± 4.7)
	e. 4 days	4.3 (± 3.6)	3.2 (± 2.7)
	f. 5 days	21.2 (± 6.5)	24.8 (± 5.7)
77.	During an average PE class, how many minutes do you spend actually exercising or playing sports?	Local (n = 1,555)	State (n = 3,057)
	a. I do not take PE	58.0% (± 5.7%)	54.1% (± 4.2%)
	b. Less than 10 minutes	1.5 (± 0.6)	1.0 (± 0.4)
	c. 10–20 minutes	2.0 (± 0.8)	2.1 (± 0.7)
	d. 21–30 minutes	4.9 (± 1.4)	5.2 (± 1.3)
	e. 31–40 minutes	11.2 (± 2.4)	11.1 (± 2.3)
	f. 41–50 minutes	11.6 (± 2.9)	11.3 (± 1.9)
	g. 51–60 minutes	6.9 (± 1.9)	7.9 (± 1.3)
	h. More than 60 minutes	3.9 (± 4.1)	7.4 (± 3.0)

78.	During the average week, on how many days do you participate in supervised after-school activities either at school or away from school? Include activities such as sports, art, music, dance, drama, or community service, religious, or club activities.			
		Local (n = 3,065)		State (n = 6,063)
a.	0 days	28.4%	(± 3.9%)	32.3% (± 3.4%)
b.	1–2 days	28.9	(± 2.3)	24.3 (± 2.1)
c.	3 or more days	42.7	(± 3.4)	43.4 (± 2.5)

Health Conditions and Health Care

79.	Has a doctor or nurse ever told you that you have asthma?	Local (n = 1,551)		State (n = 3,044)
a.	Yes	19.0%	(± 1.3%)	19.2% (± 1.5%)
b.	No	76.9	(± 1.8)	76.5 (± 1.8)
c.	Not sure	4.1	(± 0.9)	4.3 (± 0.8)
80.	Do you still have asthma?	Local (n = 1,550)		State (n = 3,039)
a.	I have never had asthma	62.3%	(± 2.5%)	62.4% (± 1.8%)
b.	Yes	10.5	(± 1.4)	11.9 (± 1.0)
c.	No	18.8	(± 2.4)	17.1 (± 1.4)
d.	Not sure	8.5	(± 1.5)	8.6 (± 1.1)
81.	RESCUE inhalers are asthma medicine that you breath in through your mouth that gives you QUICK relief from asthma symptoms. They are PRESCRIBED by a doctor. During the past 4 weeks, about how many days per week on average did you use a rescue inhaler? [†]	Local (n = 1,029)		State (n = 2,381)
a.	Never	92.0%	(± 1.3%)	91.7% (± 1.2%)
b.	1 or 2 days per week	4.3	(± 1.3)	4.3 (± 0.9)
c.	3 to 6 days per week	1.9	(± 0.8)	1.6 (± 0.5)
d.	Every day, once per day	0.7	(± 0.3)	0.8 (± 0.4)
e.	Every day, twice or more per day	0.6	(± 0.4)	0.8 (± 0.4)
f.	I'm not sure	0.5	(± 0.3)	0.8 (± 0.4)
82.	During the past 12 months, how many times did you visit an emergency room or urgent care center because of your asthma? [†]	Local (n = 1,035)		State (n = 2,389)
a.	I do not have asthma	81.8%	(± 3.4%)	79.6% (± 2.1%)
b.	None	14.8	(± 3.1)	16.2 (± 1.6)
c.	1 to 3 times	1.9	(± 0.6)	2.2 (± 0.6)
d.	4 to 9 times	0.4	(± 0.4)	0.6 (± 0.3)
e.	10 to 12 times	0.2	(± 0.3)	0.3 (± 0.2)
f.	More than 12 times	0.2	(± 0.3)	0.3 (± 0.2)
g.	I don't know	0.7	(± 0.4)	0.8 (± 0.5)

83.	During the past 12 months, how many days did you stay out of school or stay away from your usual activities because of your asthma? [†]		
		Local (n = 1,030)	State (n = 2,376)
	a. I do not have asthma	82.6% (± 3.2%)	80.9% (± 2.0%)
	b. None	13.6 (± 3.1)	14.9 (± 1.6)
	c. 1 to 2 days	1.4 (± 0.6)	1.9 (± 0.5)
	d. 3 to 4 days	1.2 (± 0.4)	0.7 (± 0.3)
	e. 5 to 10 days	0.3 (± 0.3)	0.7 (± 0.4)
	f. More than 10 days	0.3 (± 0.3)	0.4 (± 0.2)
	g. I don't know	0.7 (± 0.5)	0.7 (± 0.5)
84.	Symptoms of asthma include coughing, wheezing, shortness of breath, and chest tightness when you don't have a cold or the flu. During the past 4 weeks, about how many days per week on average did you have any symptoms of asthma? [†]		
		Local (n = 1,029)	State (n = 2,377)
	a. Never	81.5% (± 2.4%)	81.7% (± 1.6%)
	b. 1 or 2 days per week	9.8 (± 1.7)	9.7 (± 1.2)
	c. 3 to 6 days per week	2.9 (± 0.8)	3.1 (± 0.6)
	d. Every day, but not throughout the day	2.0 (± 0.8)	2.3 (± 0.5)
	e. Every day, throughout the day	0.9 (± 0.5)	1.1 (± 0.4)
	f. I'm not sure	2.8 (± 0.9)	2.2 (± 0.5)
[Item 85 appears only on the elementary version of the survey.]			
86.	Have you ever been told by a doctor or other health professional that you have diabetes?		
		Local (n = 1,512)	State (n = 2,917)
	a. No	95.0% (± 1.2%)	94.6% (± 0.9%)
	b. Yes	3.0 (± 0.8)	3.7 (± 0.7)
	c. I don't know	2.0 (± 0.8)	1.8 (± 0.5)
87.	When was the last time you saw a doctor or health care provider for a check-up or physical exam when you were not sick or injured?		
		Local (n = 1,550)	State (n = 3,041)
	a. During the past 12 months	58.7% (± 3.9%)	58.0% (± 2.4%)
	b. Between 12 and 24 months ago	21.3 (± 3.4)	19.7 (± 2.1)
	c. More than 24 months ago	8.3 (± 2.0)	8.8 (± 1.3)
	d. Never	3.2 (± 1.0)	3.8 (± 0.9)
	e. Not sure	8.5 (± 1.4)	9.7 (± 1.4)
88.	When was the last time you saw a dentist for a check-up, exam, teeth cleaning, or other dental work?		
		Local (n = 1,550)	State (n = 3,043)
	a. During the past 12 months	76.0% (± 3.4%)	74.7% (± 2.2%)
	b. Between 12 and 24 months ago	11.7 (± 1.5)	11.9 (± 1.2)
	c. More than 24 months ago	6.8 (± 1.8)	7.4 (± 1.0)
	d. Never	1.4 (± 0.7)	1.5 (± 0.5)
	e. Not sure	4.1 (± 1.2)	4.5 (± 1.0)

Sexual Behavior

89.	Have you ever had sexual intercourse? [†]	Local (n = 317)	State (n = 1,024)
	a. Yes	52.7% (± 7.4%)	52.6% (± 4.6%)
	b. No	47.3 (± 7.4)	47.4 (± 4.6)
90.	How old were you when you had sexual intercourse for the first time? [†]	Local (n = 318)	State (n = 1,021)
	a. I have never had sexual intercourse	47.2% (± 7.4%)	47.6% (± 4.7%)
	b. 11 years old or younger	5.0 (± 4.2)	3.2 (± 1.4)
	c. 12 years old	1.6 (± 1.4)	2.2 (± 1.2)
	d. 13 years old	4.4 (± 1.9)	3.7 (± 1.6)
	e. 14 years old	3.8 (± 2.5)	5.8 (± 1.7)
	f. 15 years old	13.2 (± 1.4)	13.0 (± 1.7)
	g. 16 years old	17.6 (± 2.6)	16.3 (± 2.5)
	h. 17 years old or older	7.2 (± 3.0)	8.2 (± 2.3)
91.	With how many people have you ever had sexual intercourse? [†]	Local (n = 318)	State (n = 1,021)
	a. I have never had sexual intercourse	48.7% (± 7.8%)	48.5% (± 4.9%)
	b. 1 person	19.8 (± 2.3)	18.9 (± 2.0)
	c. 2 people	7.6 (± 1.8)	9.3 (± 1.7)
	d. 3 people	5.4 (± 2.2)	5.9 (± 1.4)
	e. 4 people	3.8 (± 1.2)	4.6 (± 1.6)
	f. 5 people	4.1 (± 1.6)	3.3 (± 1.1)
	g. 6 or more people	10.7 (± 3.6)	9.5 (± 1.8)
92.	The last time you had sexual intercourse, did you or your partner use a condom? [†]	Local (n = 318)	State (n = 1,015)
	a. I have never had sexual intercourse	49.7% (± 8.1%)	47.8% (± 5.0%)
	b. Yes	26.7 (± 4.0)	28.2 (± 2.4)
	c. No	23.6 (± 4.4)	24.0 (± 3.5)

Safety

93.	When you rode a bicycle during the past 12 months, how often did you wear a helmet?	Local (n = 1,562)	State (n = 3,088)
	a. I did not ride a bicycle in the past 12 months	38.9% (± 3.9%)	36.3% (± 2.8%)
	b. Never wore a helmet	30.8 (± 3.1)	41.0 (± 3.4)
	c. Rarely wore a helmet	6.9 (± 1.1)	5.7 (± 1.0)
	d. Sometimes wore a helmet	4.9 (± 1.1)	4.0 (± 0.9)
	e. Most of the time wore a helmet	6.6 (± 1.5)	4.7 (± 0.9)
	f. Always wore a helmet	12.0 (± 2.4)	8.3 (± 1.5)

[Item 94 appears only on the elementary version of the survey.]

95.	How often do you wear a life vest when you're in a small boat like a canoe, raft, or small motorboat?	Local (n = 1,562)	State (n = 3,093)
a.	Never go boating in a small boat	24.9% (± 2.7%)	25.3% (± 2.2%)
b.	Never	15.0 (± 2.5)	16.1 (± 1.7)
c.	Less than half the time	9.5 (± 1.4)	10.8 (± 1.2)
d.	About half the time	9.4 (± 1.7)	8.7 (± 0.9)
e.	More than half the time	13.1 (± 2.0)	12.6 (± 1.5)
f.	Always	28.2 (± 3.8)	26.6 (± 2.1)
96.	How often do you wear a seat belt when riding in a car (driven by someone else) ^B ?	Local (n = 1,565)	State (n = 3,093)
a.	Never	1.4% (± 0.6%)	1.4% (± 0.4%)
b.	Rarely	1.7 (± 0.4)	2.1 (± 0.5)
c.	Sometimes	3.4 (± 0.7)	3.7 (± 0.7)
d.	Most of the time	14.1 (± 2.5)	15.7 (± 1.5)
e.	Always	79.5 (± 2.9)	77.1 (± 1.8)
97.	During the past 30 days, how many times did you ride in a car or other vehicle driven by someone who had been drinking alcohol?	Local (n = 3,060)	State (n = 6,015)
a.	0 times	78.5% (± 2.1%)	77.5% (± 1.8%)
b.	1 time	10.1 (± 1.3)	10.1 (± 1.0)
c.	2–3 times	7.4 (± 1.0)	7.9 (± 0.9)
d.	4–5 times	1.6 (± 0.4)	2.0 (± 0.4)
e.	6 or more times	2.4 (± 0.5)	2.5 (± 0.4)

[Item 98 appears only on the elementary version of the survey.]

99.	During the past 30 days, how many times did you drive a car or other vehicle when you had been drinking alcohol?	Local (n = 3,051)	State (n = 6,000)
a.	0 times	88.7% (± 1.5%)	88.3% (± 1.0%)
b.	1 time	5.6 (± 1.1)	6.0 (± 0.7)
c.	2–3 times	3.6 (± 1.0)	3.4 (± 0.5)
d.	4–5 times	0.9 (± 0.4)	1.0 (± 0.3)
e.	6 or more times	1.3 (± 0.5)	1.4 (± 0.3)

Behaviors Related to Intentional Injuries

100.	During the past 30 days, on how many days did you carry a weapon such as a gun, knife, or club for self-protection or because you thought you might need it in a fight? (Do NOT include carrying a weapon for hunting, fishing, or camping.)	Local (n = 1,563)	State (n = 3,092)
a.	0 days	90.7% (± 1.9%)	90.3% (± 1.4%)
b.	1 day	2.2 (± 0.5)	2.2 (± 0.5)
c.	2–3 days	1.9 (± 0.8)	2.2 (± 0.5)
d.	4–5 days	0.8 (± 0.5)	0.8 (± 0.3)
e.	6 or more days	4.5 (± 1.2)	4.5 (± 0.9)

[Item 101 appears only on the elementary version of the survey.]

102.	During the past 30 days, on how many days did you carry a weapon such as a gun, knife, or club on school property?	Local (n = 3,094)	State (n = 6,158)
a.	0 days	94.1% (± 1.2%)	92.8% (± 1.1%)
b.	1–5 days	3.2 (± 0.8)	3.7 (± 0.7)
c.	6 or more days	2.7 (± 0.5)	3.5 (± 0.5)

103.	During the past 12 months, how many times were you in a physical fight?	Local (n = 3,089)	State (n = 6,151)
a.	0 times	81.8% (± 2.1%)	80.4% (± 1.5%)
b.	1 time	8.9 (± 1.0)	9.9 (± 0.7)
c.	2–3 times	5.4 (± 1.0)	5.9 (± 0.6)
d.	4–5 times	1.6 (± 0.5)	1.4 (± 0.3)
e.	6 or more times	2.4 (± 0.7)	2.4 (± 0.5)
104.	During the past 12 months, how many times were you in a physical fight on school property?	Local (n = 1,560)	State (n = 3,085)
a.	0 times	94.3% (± 1.5%)	94.3% (± 1.0%)
b.	1 time	3.5 (± 1.1)	3.7 (± 0.7)
c.	2–3 times	1.1 (± 0.4)	1.2 (± 0.4)
d.	4–5 times	0.5 (± 0.3)	0.3 (± 0.2)
e.	6 or more times	0.6 (± 0.3)	0.5 (± 0.2)
105.	During the past 12 months, have you been a member of a gang?	Local (n = 3,078)	State (n = 6,060)
a.	No	94.8% (± 1.0%)	94.8% (± 0.7%)
b.	Yes	5.2 (± 1.0)	5.2 (± 0.7)
106.	During the past 12 months, did your boyfriend or girlfriend ever limit your activities, threaten you, or make you feel unsafe in any other way? [†]	Local (n = 1,038)	State (n = 2,408)
a.	No	90.7% (± 2.0%)	89.8% (± 1.5%)
b.	Yes	9.3 (± 2.0)	10.2 (± 1.5)
107.	In the past 12 months, have you had any injuries such as bruises, cuts, black eyes, or broken bones as a result of being hurt by a boyfriend or girlfriend? [†]	Local (n = 1,038)	State (n = 2,401)
a.	No	93.8% (± 1.6%)	93.7% (± 1.4%)
b.	Yes	6.2 (± 1.6)	6.3 (± 1.4)
108.	Have you ever been physically abused by an adult? [†]	Local (n = 1,041)	State (n = 2,402)
a.	No	85.4% (± 2.3%)	82.5% (± 1.8%)
b.	Yes	14.6 (± 2.3)	17.5 (± 1.8)
109.	Not counting TV, movies, video games, and sporting events, have you seen an adult hit, slap, punch, shove, kick, or otherwise physically hurt another adult more than one time? [†]	Local (n = 1,033)	State (n = 2,396)
a.	No	76.7% (± 3.5%)	72.1% (± 2.3%)
b.	Yes	23.3 (± 3.5)	27.9 (± 2.3)

Depression

110.	During the past 12 months, did you ever feel so sad or hopeless almost every day for two weeks or more in a row that you stopped doing some usual activities?	Local (n = 3,037)	State (n = 5,955)
a.	Yes	26.4% (± 1.6%)	28.4% (± 1.3%)
b.	No	73.6 (± 1.6)	71.6 (± 1.3)

111. During the past 12 months, did you ever seriously consider attempting suicide?	Local (n = 3,040)	State (n = 5,953)
a. Yes	14.0% (± 1.5%)	13.8% (± 1.0%)
b. No	86.1 (± 1.5)	86.2 (± 1.0)
112. During the past 12 months, did you make a plan about how you would attempt suicide?	Local (n = 1,562)	State (n = 3,084)
a. Yes	10.3% (± 1.4%)	10.9% (± 1.2%)
b. No	89.7 (± 1.4)	89.1 (± 1.2)
113. During the past 12 months, how many times did you actually attempt suicide?	Local (n = 1,563)	State (n = 3,088)
a. 0 times	94.4% (± 1.1%)	94.2% (± 1.0%)
b. 1 time	3.5 (± 0.8)	3.3 (± 0.7)
c. 2–3 times	1.5 (± 0.5)	1.3 (± 0.4)
d. 4–5 times	0.0 (± 0.0)	0.3 (± 0.3)
e. 6 or more times	0.7 (± 0.4)	0.9 (± 0.5)
[Items 114–115 appear only on the elementary version of the survey.]		
116. When you feel sad or hopeless, are there adults you can turn to for help?	Local (n = 1,557)	State (n = 3,073)
a. I never feel sad or hopeless	19.1% (± 1.9%)	20.5% (± 1.6%)
b. Yes	55.2 (± 3.0)	54.9 (± 1.9)
c. No	13.8 (± 1.6)	12.9 (± 1.3)
d. Not sure	11.9 (± 2.2)	11.8 (± 1.2)
117. How likely would you be to seek help if you were feeling depressed or suicidal?	Local (n = 1,545)	State (n = 3,038)
a. I never feel depressed or suicidal	39.9% (± 2.3%)	39.7% (± 1.9%)
b. Very likely	17.9 (± 1.9)	19.5 (± 1.5)
c. Somewhat likely	18.5 (± 2.1)	16.7 (± 1.7)
d. Somewhat unlikely	12.6 (± 1.2)	11.6 (± 1.0)
e. Very unlikely	11.2 (± 1.7)	12.6 (± 1.3)
118. How likely would you be to seek help for a friend who you thought might be depressed or suicidal?	Local (n = 1,540)	State (n = 3,021)
a. Very likely	60.8% (± 2.8%)	63.8% (± 1.9%)
b. Somewhat likely	27.5 (± 2.4)	23.0 (± 2.0)
c. Somewhat unlikely	5.7 (± 1.1)	6.6 (± 0.9)
d. Very unlikely	5.9 (± 1.4)	6.7 (± 1.0)
119. Last year in school, did you hear or see information at your school about the warning signs of suicide and how to get help for yourself or a friend?	Local (n = 1,538)	State (n = 3,007)
a. Very likely	47.5% (± 12.7%)	43.2% (± 6.0%)
b. Somewhat likely	41.9 (± 10.5)	44.6 (± 4.9)
c. Somewhat unlikely	10.7 (± 2.6)	12.2 (± 1.9)
d. Very unlikely	0.0 (± 0.0)	0.0 (± 0.0)

Gambling

120. In the past 12 months, how often have you gambled (bet) for money or possessions?	Local (n = 1,492)	State (n = 2,914)
a. Never in the past year	74.3% (± 3.6%)	74.0% (± 2.0%)
b. Once or twice in the past year	13.0 (± 2.1)	13.5 (± 1.4)
c. A few times in the past year	8.2 (± 1.6)	7.8 (± 1.1)
d. Once or twice a month	2.7 (± 0.9)	2.8 (± 0.6)
e. At least once a week	1.8 (± 0.8)	1.9 (± 0.5)
121. Has YOUR gambling ever caused you problems at home, school or with your friends?	Local (n = 1,489)	State (n = 2,908)
a. I have not gambled	72.6% (± 3.2%)	72.8% (± 1.9%)
b. Yes	2.4 (± 0.6)	2.6 (± 0.6)
c. No	25.1 (± 2.9)	24.6 (± 1.7)

School Climate

In the past few years Washington State has given increased attention to supportive learning environments. Students need a safe, nurturing, healthy, and civil learning environment if they are to be successful in school. This section provides information about student perceptions of school climate.

122. A student is being bullied when another student, or group of students, say or do nasty or unpleasant things to him or her. It is also bullying when a student is teased repeatedly in a way he or she doesn't like. It is NOT bullying when two students of about the same strength argue or fight. In the last 30 days, how often have you been bullied?	Local (n = 3,068)	State (n = 6,037)
a. I have not been bullied	82.2% (± 1.6%)	82.8% (± 1.1%)
b. Once	8.8 (± 1.0)	8.4 (± 0.7)
c. 2–3 times	5.3 (± 0.8)	4.6 (± 0.6)
d. About once a week	1.2 (± 0.3)	1.6 (± 0.4)
e. Several times a week	2.4 (± 0.5)	2.5 (± 0.5)
123. In the past 30 days, how often were you bullied, harassed, or intimidated at school or on your way to or from school because of your race, ethnicity, or national origin or what someone thought it was?	Local (n = 1,547)	State (n = 3,037)
a. 0 times	89.8% (± 1.7%)	90.5% (± 1.1%)
b. 1 time	4.3 (± 0.8)	3.7 (± 0.6)
c. 2 or 3 times	3.0 (± 0.7)	2.7 (± 0.6)
d. About once a week	1.0 (± 0.5)	1.2 (± 0.4)
e. Several times a week or more	1.9 (± 0.8)	1.9 (± 0.5)
124. In the past 30 days, how often were you bullied, harassed, or intimidated at school or on your way to or from school because your religion or what someone thought it was?	Local (n = 1,547)	State (n = 3,037)
a. 0 times	92.2% (± 1.4%)	91.5% (± 1.0%)
b. 1 time	3.9 (± 1.2)	4.6 (± 0.7)
c. 2 or 3 times	2.0 (± 0.7)	2.2 (± 0.7)
d. About once a week	0.7 (± 0.4)	0.7 (± 0.3)
e. Several times a week or more	1.2 (± 0.4)	0.9 (± 0.3)

125. In the past 30 days, how often were you bullied, harassed, or intimidated at school or on your way to or from school because someone thought you were gay, lesbian or bisexual (whether you are or are not)?		
	Local (n = 1,548)	State (n = 3,033)
a. 0 times	92.6% (± 0.9%)	92.5% (± 0.7%)
b. 1 time	2.8 (± 0.7)	2.9 (± 0.4)
c. 2 or 3 times	2.7 (± 0.4)	2.1 (± 0.5)
d. About once a week	0.4 (± 0.3)	1.0 (± 0.4)
e. Several times a week or more	1.5 (± 0.7)	1.5 (± 0.5)
126. In the past 30 days, how often were you bullied, harassed, or intimidated at school or on your way to or from school because of your gender (being male or female)? This includes sexual jokes, gestures, or comments that make you feel uncomfortable.		
	Local (n = 1,543)	State (n = 3,032)
a. 0 times	86.3% (± 1.7%)	86.0% (± 1.2%)
b. 1 time	5.9 (± 1.0)	5.6 (± 0.7)
c. 2 or 3 times	4.3 (± 0.8)	4.7 (± 0.6)
d. About once a week	1.4 (± 0.8)	1.7 (± 0.5)
e. Several times a week or more	2.1 (± 0.8)	2.1 (± 0.5)
127. In the past 30 days, how often were you bullied, harassed, or intimidated at school or on your way to or from school because you have a health problem or physical or mental disability, or because someone thought you did?		
	Local (n = 1,546)	State (n = 3,033)
a. 0 times	94.6% (± 1.1%)	93.9% (± 0.8%)
b. 1 time	1.6 (± 0.7)	2.4 (± 0.6)
c. 2 or 3 times	1.4 (± 0.5)	1.6 (± 0.4)
d. About once a week	0.9 (± 0.5)	0.6 (± 0.2)
e. Several times a week or more	1.4 (± 0.5)	1.4 (± 0.4)
128. In the past 30 days, how often were you bullied, harassed, or intimidated at school or on your way to or from school because of any other reason?		
	Local (n = 1,546)	State (n = 3,030)
a. 0 times	84.0% (± 2.1%)	83.6% (± 1.2%)
b. 1 time	8.1 (± 1.5)	7.6 (± 0.9)
c. 2 or 3 times	4.6 (± 1.0)	5.2 (± 0.7)
d. About once a week	1.4 (± 0.5)	1.7 (± 0.5)
e. Several times a week or more	1.9 (± 0.8)	2.0 (± 0.6)
129. During the past 30 days, on how many days did you not go to school because you felt you would be unsafe at school or on your way to and from school?		
	Local (n = 1,538)	State (n = 2,997)
a. 0 days	94.5% (± 1.3%)	93.7% (± 1.1%)
b. 1 day	2.9 (± 0.7)	2.9 (± 0.6)
c. 2 or 3 days	1.4 (± 0.7)	2.0 (± 0.6)
d. 4 or 5 days	0.6 (± 0.2)	0.7 (± 0.4)
e. 6 or more days	0.7 (± 0.4)	0.7 (± 0.3)
130. In the past 30 days, has someone used the computer or a cell phone to bully, harass or intimidate you?		
	Local (n = 1,548)	State (n = 3,023)
a. Yes	11.5% (± 1.3%)	10.8% (± 0.9%)
b. No	83.9 (± 1.6)	84.8 (± 1.2)
c. I'm not sure	4.6 (± 1.2)	4.4 (± 0.7)

131. Does your school provide a counselor, intervention specialist, or other school staff member for students to discuss problems with alcohol, tobacco, or other drugs?	Local (n = 3,058)	State (n = 6,015)
a. No	10.4% (± 1.8%)	10.3% (± 1.4%)
b. Yes	59.4 (± 3.6)	63.9 (± 4.2)
c. I'm not sure	30.2 (± 3.0)	25.8 (± 3.3)
132. My school will punish students who are caught using drugs or alcohol.	Local (n = 1,524)	State (n = 3,020)
a. NO!	4.7% (± 1.5%)	4.2% (± 0.9%)
b. no	5.3 (± 1.3)	6.2 (± 1.0)
c. yes	33.9 (± 2.7)	38.8 (± 2.2)
d. YES!	56.1 (± 4.1)	50.8 (± 2.5)
133. Last year in school, were you taught about HIV or AIDS infection?	Local (n = 1,541)	State (n = 3,014)
a. Yes	43.7% (± 11.8%)	47.3% (± 7.3%)
b. No	47.8 (± 10.1)	42.7 (± 6.4)
c. I'm not sure	8.6 (± 2.0)	10.0 (± 1.7)
134. Last year in school, were you taught about abstinence (not having sex) to prevent sexually transmitted diseases (STDs) and pregnancy? [†]	Local (n = 1,036)	State (n = 2,391)
a. Yes	53.1% (± 10.2%)	54.0% (± 6.6%)
b. No	39.2 (± 9.4)	36.3 (± 6.2)
c. I don't know	7.7 (± 1.5)	9.8 (± 1.5)
135. Last year in school, were you taught about ways other than abstinence to prevent sexually transmitted diseases (STDs) and pregnancy? [†]	Local (n = 1,030)	State (n = 2,384)
a. Yes	54.9% (± 11.7%)	56.4% (± 6.7%)
b. No	36.7 (± 10.9)	33.3 (± 6.3)
c. I don't know	8.5 (± 1.3)	10.3 (± 1.5)

Quality of Life

Health-related quality of life is an individual's or group's perceived physical and mental health over time. At the individual level it involves a person's health and health-related conditions; at the community level it involves conditions that influence people's health. This section contains the results of the items related to individual quality of life.

136. Youth Quality of Life (Computed from items 137–142.)	Local (n = 1,509)	State (n = 2,930)
a. Low	23.0% (± 2.2%)	24.2% (± 1.5%)
b. Medium low	27.2 (± 2.3)	25.2 (± 1.8)
c. Medium high	23.1 (± 1.5)	23.6 (± 1.4)
d. High	26.6 (± 3.4)	27.0 (± 2.1)

137. I feel I am getting along with my parents or guardians.	Local (n = 1,522)	State (n = 2,974)
a. 0 not at all true	4.1% (± 1.3%)	4.2% (± 0.7%)
b. 1	2.1 (± 0.8)	2.6 (± 0.6)
c. 2	1.7 (± 0.9)	2.1 (± 0.5)
d. 3	3.4 (± 0.9)	3.0 (± 0.7)
e. 4	3.9 (± 0.9)	3.8 (± 0.7)
f. 5	6.4 (± 1.3)	7.6 (± 1.0)
g. 6	6.4 (± 1.2)	6.1 (± 0.9)
h. 7	14.5 (± 1.0)	14.3 (± 1.3)
i. 8	16.6 (± 2.4)	15.7 (± 2.0)
j. 9	15.5 (± 1.5)	13.4 (± 1.3)
k. 10 completely true	25.3 (± 1.8)	27.3 (± 1.9)
138. I look forward to the future.	Local (n = 1,524)	State (n = 2,972)
a. 0 not at all true	2.3% (± 0.8%)	2.6% (± 0.6%)
b. 1	0.9 (± 0.5)	1.2 (± 0.4)
c. 2	1.6 (± 0.9)	1.6 (± 0.5)
d. 3	2.0 (± 0.9)	1.8 (± 0.5)
e. 4	1.8 (± 0.6)	1.2 (± 0.5)
f. 5	4.9 (± 1.0)	5.4 (± 0.7)
g. 6	5.3 (± 1.1)	4.0 (± 0.7)
h. 7	7.2 (± 0.9)	7.5 (± 0.8)
i. 8	13.0 (± 1.8)	11.8 (± 1.3)
j. 9	14.4 (± 1.9)	13.4 (± 1.2)
k. 10 completely true	46.7 (± 2.7)	49.6 (± 2.4)
139. I feel good about myself.	Local (n = 1,521)	State (n = 2,969)
a. 0 not at all true	3.0% (± 1.0%)	3.2% (± 0.6%)
b. 1	1.3 (± 0.5)	1.6 (± 0.5)
c. 2	3.0 (± 0.7)	2.4 (± 0.6)
d. 3	3.4 (± 1.2)	3.5 (± 0.7)
e. 4	2.9 (± 0.7)	4.1 (± 0.7)
f. 5	6.2 (± 0.8)	6.6 (± 0.9)
g. 6	8.6 (± 0.8)	8.2 (± 1.0)
h. 7	15.5 (± 1.5)	13.5 (± 1.3)
i. 8	17.8 (± 2.5)	16.5 (± 1.6)
j. 9	14.7 (± 3.4)	14.7 (± 2.0)
k. 10 completely true	23.6 (± 2.8)	25.9 (± 2.1)
140. I am satisfied with the way my life is now.	Local (n = 1,520)	State (n = 2,956)
a. 0 not at all true	4.7% (± 1.1%)	4.5% (± 0.7%)
b. 1	2.7 (± 0.7)	2.6 (± 0.6)
c. 2	3.7 (± 1.0)	3.4 (± 0.7)
d. 3	4.7 (± 1.2)	4.4 (± 0.8)
e. 4	4.8 (± 1.2)	5.0 (± 0.8)
f. 5	8.4 (± 1.3)	9.5 (± 1.0)
g. 6	9.2 (± 1.5)	8.6 (± 1.1)
h. 7	14.7 (± 1.4)	13.0 (± 1.3)
i. 8	15.3 (± 1.7)	15.4 (± 1.4)
j. 9	15.1 (± 2.5)	13.4 (± 1.2)
k. 10 completely true	16.6 (± 2.5)	20.2 (± 2.0)

	Local (n = 1,516)	State (n = 2,946)
141. I feel alone in my life.		
a. 0 not at all true	37.3% (± 2.6%)	37.5% (± 1.9%)
b. 1	15.2 (± 2.1)	12.4 (± 1.2)
c. 2	9.2 (± 1.5)	9.9 (± 1.2)
d. 3	5.4 (± 1.1)	5.5 (± 0.9)
e. 4	3.8 (± 0.8)	4.4 (± 0.9)
f. 5	6.1 (± 1.1)	6.1 (± 0.9)
g. 6	5.3 (± 0.4)	4.7 (± 0.6)
h. 7	5.9 (± 1.4)	6.6 (± 0.9)
i. 8	5.5 (± 1.5)	5.6 (± 0.9)
j. 9	2.8 (± 0.8)	3.0 (± 0.5)
k. 10 completely true	3.3 (± 1.2)	4.2 (± 0.9)
	Local (n = 1,516)	State (n = 2,944)
142. Compared with others my age, my life is		
a. 0 much worse than others	3.5% (± 0.7%)	2.7% (± 0.6%)
b. 1	1.1 (± 0.4)	1.3 (± 0.3)
c. 2	2.1 (± 0.7)	2.3 (± 0.6)
d. 3	3.6 (± 0.9)	3.3 (± 0.6)
e. 4	4.8 (± 1.0)	4.5 (± 0.8)
f. 5	13.7 (± 1.8)	15.4 (± 1.5)
g. 6	10.1 (± 1.4)	10.4 (± 1.2)
h. 7	16.3 (± 1.9)	15.7 (± 1.4)
i. 8	18.9 (± 1.9)	18.4 (± 1.5)
j. 9	10.6 (± 2.1)	10.5 (± 1.2)
k. 10 much better than others	15.4 (± 1.6)	15.6 (± 1.5)
	Local (n = 1,544)	State (n = 3,025)
143. Which of the following best describes where you currently live? (Choose only one answer.)		
a. My parent's or guardian's home	95.3% (± 1.2%)	94.4% (± 1.0%)
b. With friends or other families (because lost home or cannot afford housing)	2.3 (± 0.7)	2.6 (± 0.5)
c. On your own (because lost home or cannot afford housing)	0.8 (± 0.5)	0.8 (± 0.3)
d. Motel or hotel	0.2 (± 0.2)	0.4 (± 0.2)
e. Shelter (shelter or emergency/transitional housing)	0.2 (± 0.2)	0.2 (± 0.2)
f. Car, park, campground, or other public place	0.2 (± 0.2)	0.3 (± 0.2)
g. Waiting to be placed in foster care	0.1 (± 0.1)	0.1 (± 0.1)
h. Another place	0.9 (± 0.6)	1.2 (± 0.5)
	Local (n = 1,541)	State (n = 3,021)
144. Has your parent or guardian served in the military (Army, Navy, Air Force, Marines, Coast Guard, National Guard, and Reserves)?		
a. No	78.7% (± 2.7%)	75.4% (± 2.5%)
b. Yes	18.4 (± 2.0)	22.1 (± 2.2)
c. Not sure	2.9 (± 1.0)	2.4 (± 0.7)
	Local (n = 1,536)	State (n = 3,012)
145. Has your military parent or guardian been sent to Iraq, Afghanistan, or other combat zone?		
a. I do not have a parent or guardian who has ever served in the military	73.6% (± 2.6%)	69.7% (± 2.5%)
b. No	20.4% (± 2.0%)	22.3% (± 1.5%)
c. Yes	3.9 (± 1.1)	5.5 (± 1.2)
d. Not sure	2.0 (± 0.5)	2.6 (± 0.6)

[Item 146 appears only on the elementary version of the survey.]

Risk and Protective Factors

Decades of research have shown that certain risk factors are associated with increased likelihood of health risk behaviors including ATOD use, violence, and delinquent behaviors. Similarly, research has shown that protective factors exert a positive influence against the negative influence of risk factors. The survey included substantial coverage of risk and protective factors based on the work of Drs. Hawkins and Catalano and associates at the University of Washington. The premise of the risk reduction and protective factor enhancement approach to prevention is that preventing a problem before it occurs requires addressing the factors that predict the problem. Ideally, this strategy entails discovering the causes of the problem behavior and influencing those causes. Many of the survey items were used to assess students' status on risk and protective factors in the community, school, and peer-individual domains. Composite scales were computed for use in local program planning.

The table on the following page provides the complete list of risk and protective factors and indicates the years the Healthy Youth Survey has included each factor.

Risk and Protective Factor Framework and Reporting Schedule

	Healthy Youth Survey Administration Year							
	1995	1998	2000	2002	2004	2006	2008	2010
Community Risk Factors								
Low Neighborhood Attachment	X	X	X	X ^S		X ^S	X ^S	X ^S
Community Disorganization	X							
Transitions and Mobility	X				X ^S			
Perceived Availability of Drugs	X	X	X	X	X	X	X	X
Perceived Availability of Handguns	X	X	X	X ^S	X ^S	X ^S	X ^S	X ^S
Laws And Norms Favorable to Drug Use	X	X	X	X	X	X	X	X
Community Protective Factors								
Opportunities for Prosocial Involvement			X	X	X ^S	X ^S	X ^S	X ^S
Rewards for Prosocial Involvement	X	X	X	X	X	X	X	X ^E
Family Risk Factors								
Family History of Antisocial Behavior	X							
Poor Family Management	X			X ^{S, †}	X ^{S, †}	X ^{S, †}	X ^{S, †}	X ^{S, †}
Family Conflict								
Parental Attitudes Favorable towards Drug Use					X ^{S, †}		X ^{S, †}	X ^S
Parental Attitudes Favorable to Antisocial Behavior	X				X ^{S, †}			
Antisocial Behavior Among Familiar Adults				X ^S				
Family Protective Factors								
Attachment								
Opportunities for Prosocial Involvement	X			X [†]	X ^{E, †}	X [†]	X [†]	X [†]
Rewards for Prosocial Involvement	X			X [†]	X ^{E, †}	X [†]	X [†]	X [†]
School Risk Factors								
Academic Failure	X	X	X	X	X	X	X	X
Low Commitment to School	X	X	X	X	X	X	X	X
School Protective Factors								
Opportunities for Prosocial Involvement	X	X	X	X ^S	X ^S	X ^S	X ^S	X ^S
Rewards for Prosocial Involvement	X	X	X	X	X	X	X	X
Peer-Individual Risk Factors								
Rebelliousness	X	X						
Gang Involvement								
Perceived Risk of Drug Use		X	X	X	X	X	X	X
Early Initiation of Drug Use			X	X ^S	X ^S	X ^S	X ^S	X ^S
Early Initiation of Antisocial Behavior	X	X	X	X ^S	X ^S	X ^S	X ^S	X ^S
Favorable Attitudes Towards Drug Use	X	X	X	X	X	X	X	X
Favorable Attitudes Towards Antisocial Behavior	X	X	X	X ^S	X ^S	X ^S	X ^S	X ^S
Sensation Seeking	X	X						
Rewards for Antisocial Involvement		X	X	X ^S	X ^S	X ^S	X ^S	
Friends' Use of Drugs	X	X	X	X ^S	X ^S	X ^S	X ^S	X ^S
Interaction With Antisocial Peers	X	X			X ^S	X ^S	X ^S	X ^S
Intentions to Use				X ^S	X ^S	X ^S	X ^S	X ^S
Peer-Individual Protective Factors								
Interaction With Prosocial Peers					X	X	X	X ^S
Belief in the Moral Order	X	X	X	X ^S	X ^S	X ^S	X ^S	X ^S
Prosocial Involvement					X	X	X ^E	X ^E
Rewards for Prosocial Involvement								
Social Skills	X	X	X ^S	X ^S	X ^S	X ^S	X ^S	X ^S
Religiosity		X						

Note. S = Included only on the secondary version; E = Included only on the elementary version; † = Based on optional items.

Risk and Protective Factor Scale Results

For each *risk* factor scale, the percentage of students who are at risk (i.e., who agreed with statements that predict ATOD use or other problem behaviors) is reported; higher percentages indicate that *more* students are likely to engage in problem behaviors. For each *protective* factor scale, the percentage of students who are resilient (i.e., who agreed with statements that predict the ability to resist ATOD use or other problem behaviors) is reported; higher percentages indicate that *fewer* students are likely to engage in problem behaviors. These percentages are based on computational methods provided by the University of Washington's Social Development Research Group.

Community Risk Factors	Local (<i>n</i> = 1,551)	State (<i>n</i> = 3,104)
Low Neighborhood Attachment (Items 147–149)	45.7% (± 3.4%)	49.8% (± 2.4%)
Perceived Availability of Drugs (Items 150–153)	36.9% (± 4.3%) (<i>n</i> = 1,533)	38.0% (± 2.4%) (<i>n</i> = 3,074)
Perceived Availability of Handguns (Item 154)	17.9% (± 2.9%) (<i>n</i> = 1,542)	22.7% (± 2.5%) (<i>n</i> = 3,083)
Laws And Norms Favorable to Drug Use (Items 155–160)	27.2% (± 3.1%)	32.2% (± 2.6%)
Community Protective Factors	Local (<i>n</i> = 1,526)	State (<i>n</i> = 3,053)
Opportunities for Prosocial Involvement (Items 161–164)	77.5% (± 4.5%)	76.1% (± 2.6%)
Family Risk Factors	Local (<i>n</i> = 1,014)	State (<i>n</i> = 2,371)
Poor Family Management (Items 168–175)	37.1% (± 5.5%) (<i>n</i> = 1,549)	38.5% (± 2.8%) (<i>n</i> = 3,096)
Parental Attitudes Favorable Towards Drug Use (Items 183–185)	33.0% (± 4.1%)	36.5% (± 2.7%)
Family Protective Factors	Local (<i>n</i> = 1,020)	State (<i>n</i> = 2,396)
Opportunities for Prosocial Involvement (Items 176–178)	57.9% (± 3.4%) (<i>n</i> = 1,013)	53.9% (± 2.8%) (<i>n</i> = 2,382)
Rewards for Prosocial Involvement (Items 179–182)	51.6% (± 3.8%)	49.6% (± 2.2%)
School Risk Factors	Local (<i>n</i> = 1,515)	State (<i>n</i> = 3,033)
Academic Failure (Items 186–187)	46.9% (± 3.4%) (<i>n</i> = 1,545)	48.9% (± 2.1%) (<i>n</i> = 3,092)
Low Commitment to School (Items 188–194)	34.4% (± 3.0%)	36.3% (± 2.1%)
School Protective Factors	Local (<i>n</i> = 1,537)	State (<i>n</i> = 3,070)
Opportunities for Prosocial Involvement (Items 195–199)	64.7% (± 5.2%) (<i>n</i> = 1,539)	63.8% (± 3.3%) (<i>n</i> = 3,072)
Rewards for Prosocial Involvement (Items 200–203)	44.4% (± 5.4%)	44.6% (± 3.2%)

Peer-Individual Risk Factors

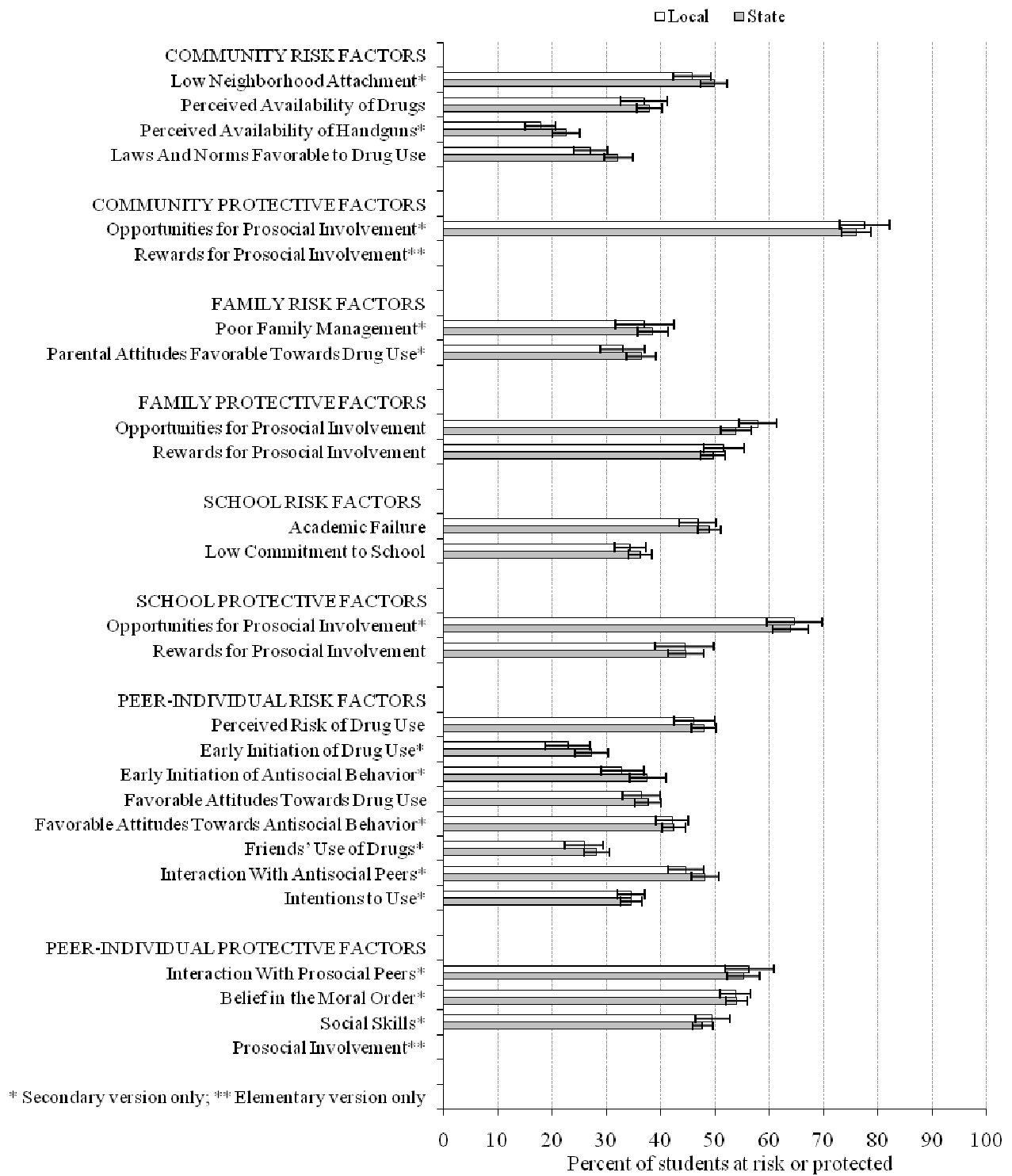
	Local (n = 1,508)	State (n = 3,004)
Perceived Risk of Drug Use (Items 204–207)	46.2% (± 3.8%)	47.9% (± 2.2%)
Early Initiation of Drug Use (Items 210–211, 213)	22.9% (± 4.1%) (n = 1,514)	27.3% (± 3.1%) (n = 2,978)
Early Initiation of Antisocial Behavior (Items 214–217)	33.0% (± 4.0%) (n = 1,494)	37.6% (± 3.3%) (n = 2,930)
Favorable Attitudes Towards Drug Use (Items 218–221)	36.4% (± 3.5%) (n = 1,497)	37.7% (± 2.4%) (n = 2,951)
Favorable Attitudes Towards Antisocial Behavior (Items 222–226)	42.2% (± 3.0%) (n = 1,475)	42.4% (± 2.2%) (n = 2,869)
Friends' Use of Drugs (Items 228–231)	25.9% (± 3.5%) (n = 1,530)	28.2% (± 2.4%) (n = 3,043)
Interaction With Antisocial Peers (Items 232–237)	44.6% (± 3.3%) (n = 1,475)	48.1% (± 2.5%) (n = 2,874)
Intentions to Use (Items 238–240)	34.6% (± 2.6%)	34.6% (± 1.9%)

Peer-Individual Protective Factors

	Local (n = 1,479)	State (n = 2,881)
Interaction With Prosocial Peers (Items 241–244)	56.3% (± 4.6%) (n = 1,532)	55.3% (± 3.0%) (n = 3,055)
Belief in the Moral Order (Items 246–249)	53.7% (± 2.8%) (n = 1,468)	53.9% (± 1.9%) (n = 2,833)
Social Skills (Items 253–255)	49.6% (± 3.2%)	47.7% (± 1.8%)

Graph of Scale Results

Risk and Protective Factors



Risk and Protective Factors: Individual Item Results

The remainder of the report provides results for the individual items used to compute the risk and protective factors.

Community Domain

	Local	State
147. I'd like to get out of my neighborhood or community.	(n = 1,548)	(n = 3,096)
a. NO!	17.3% (± 2.4%)	16.1% (± 1.9%)
b. no	43.0 (± 2.1)	41.1 (± 1.9)
c. yes	30.5 (± 2.0)	31.6 (± 1.8)
d. YES!	9.2 (± 1.5)	11.3 (± 1.6)
148. If I had to move, I would miss the neighborhood or community I now live in.	Local (n = 1,550)	State (n = 3,100)
a. NO!	6.4% (± 1.5%)	7.0% (± 0.9%)
b. no	22.9 (± 2.5)	23.6 (± 1.7)
c. yes	48.8 (± 2.9)	49.8 (± 1.8)
d. YES!	21.9 (± 2.8)	19.6 (± 1.9)
149. I like my neighborhood/community.	Local (n = 1,547)	State (n = 3,097)
a. NO!	3.8% (± 1.0%)	4.3% (± 0.9%)
b. no	13.3 (± 2.0)	14.9 (± 1.7)
c. yes	62.6 (± 1.5)	63.6 (± 1.6)
d. YES!	20.4 (± 2.8)	17.2 (± 1.9)
150. If you wanted to get some beer, wine, or hard liquor (for example, vodka, whiskey, or gin), how easy would it be for you to get some?	Local (n = 1,537)	State (n = 3,086)
a. Very hard	11.1% (± 2.7%)	10.7% (± 1.6%)
b. Sort of hard	22.2 (± 2.0)	22.9 (± 1.5)
c. Sort of easy	33.7 (± 2.7)	33.0 (± 2.2)
d. Very easy	33.0 (± 4.4)	33.4 (± 2.4)
151. If you wanted to get some cigarettes, how easy would it be for you to get some?	Local (n = 1,538)	State (n = 3,084)
a. Very hard	13.9% (± 2.4%)	11.9% (± 1.2%)
b. Sort of hard	15.4 (± 2.3)	14.0 (± 1.5)
c. Sort of easy	23.5 (± 1.7)	22.2 (± 1.6)
d. Very easy	47.1 (± 3.6)	52.0 (± 3.1)
152. If you wanted to get some marijuana, how easy would it be for you to get some?	Local (n = 1,531)	State (n = 3,068)
a. Very hard	17.2% (± 3.1%)	16.7% (± 1.6%)
b. Sort of hard	15.2 (± 2.5)	16.5 (± 1.4)
c. Sort of easy	24.5 (± 2.9)	23.9 (± 1.7)
d. Very easy	43.1 (± 3.7)	43.0 (± 2.2)
153. If you wanted to get a drug like cocaine, LSD, or amphetamines, how easy would it be for you to get some?	Local (n = 1,526)	State (n = 3,065)
a. Very hard	42.3% (± 4.1%)	41.1% (± 2.5%)
b. Sort of hard	28.2 (± 1.6)	29.6 (± 1.6)
c. Sort of easy	20.3 (± 2.3)	19.5 (± 1.6)
d. Very easy	9.2 (± 1.9)	9.9 (± 1.6)

154.	If you wanted to get a handgun, how easy would it be for you to get one?	Local (n = 1,529)	State (n = 3,069)
a.	Very hard	59.7% (± 4.7%)	53.2% (± 3.6%)
b.	Sort of hard	22.4 (± 3.0)	24.1 (± 1.7)
c.	Sort of easy	8.6 (± 1.6)	11.8 (± 1.7)
d.	Very easy	9.3 (± 1.9)	10.8 (± 1.5)
155.	How wrong would most adults in your neighborhood ^C / neighborhood or community ^A think it was for kids your age to use marijuana?	Local (n = 1,543)	State (n = 3,086)
a.	Very wrong	42.1% (± 4.2%)	40.7% (± 2.7%)
b.	Wrong	37.5 (± 2.6)	37.2 (± 1.6)
c.	A little bit wrong	15.6 (± 2.8)	16.5 (± 2.0)
d.	Not wrong at all	4.8 (± 1.2)	5.5 (± 1.0)
156.	How wrong would most adults in your neighborhood ^C / neighborhood or community ^A think it was for kids your age to drink alcohol?	Local (n = 1,543)	State (n = 3,086)
a.	Very wrong	28.5% (± 3.4%)	26.4% (± 2.2%)
b.	Wrong	43.8 (± 2.7)	42.7 (± 2.1)
c.	A little bit wrong	21.5 (± 3.2)	23.9 (± 2.0)
d.	Not wrong at all	6.3 (± 1.2)	7.0 (± 1.2)
157.	How wrong would most adults in your neighborhood ^C / neighborhood or community ^A think it was for kids your age to smoke cigarettes?	Local (n = 1,542)	State (n = 3,086)
a.	Very wrong	40.5% (± 4.3%)	33.7% (± 3.4%)
b.	Wrong	35.0 (± 2.6)	35.5 (± 2.1)
c.	A little bit wrong	16.6 (± 2.6)	19.7 (± 2.0)
d.	Not wrong at all	7.9 (± 2.4)	11.1 (± 1.9)
158.	If a kid drank some beer, wine, or hard liquor (for example, vodka, whiskey, or gin) in your neighborhood ^C / community ^A would he or she be caught by the police?	Local (n = 1,544)	State (n = 3,084)
a.	NO!	18.6% (± 1.7%)	18.3% (± 2.0%)
b.	no	62.1 (± 3.1)	62.1 (± 2.3)
c.	yes	15.0 (± 2.8)	15.6 (± 1.6)
d.	YES!	4.3 (± 1.1)	4.1 (± 0.7)
159.	If a kid carried a handgun in your neighborhood ^C / community ^A would he or she be caught by the police?	Local (n = 1,531)	State (n = 3,067)
a.	NO!	7.7% (± 1.8%)	8.4% (± 1.1%)
b.	no	30.1 (± 3.7)	30.5 (± 2.3)
c.	yes	42.7 (± 3.4)	42.0 (± 2.2)
d.	YES!	19.5 (± 2.0)	19.2 (± 1.7)
160.	If a kid smoked marijuana in your neighborhood ^C / community ^A would he or she be caught by the police?	Local (n = 1,536)	State (n = 3,075)
a.	NO!	18.5% (± 1.6%)	19.9% (± 1.6%)
b.	no	57.0 (± 2.9)	56.2 (± 2.0)
c.	yes	19.5 (± 2.6)	18.7 (± 1.7)
d.	YES!	5.1 (± 1.3)	5.2 (± 0.9)

161. There are adults in my neighborhood or community I could talk to about something important.	Local (n = 1,543)	State (n = 3,094)
a. NO!	10.2% (± 2.1%)	10.4% (± 1.3%)
b. no	17.0 (± 1.7)	15.7 (± 1.2)
c. yes	43.8 (± 2.5)	44.6 (± 1.5)
d. YES!	29.0 (± 2.3)	29.3 (± 1.8)

Which of the following activities for people your age are available in your community?

162. Sports teams and recreation	Local (n = 1,539)	State (n = 3,086)
a. Yes	90.5% (± 3.2%)	90.6% (± 2.0%)
b. No	9.5 (± 3.2)	9.4 (± 2.0)
163. Scouts, Camp Fire, 4-H Clubs, or other service clubs	Local (n = 1,538)	State (n = 3,074)
a. Yes	80.3% (± 4.8%)	76.7% (± 3.4%)
b. No	19.7 (± 4.8)	23.3 (± 3.4)
164. Boys and Girls Club, YMCA, or other activity clubs	Local (n = 1,535)	State (n = 3,069)
a. Yes	82.9% (± 6.1%)	76.1% (± 4.6%)
b. No	17.1 (± 6.1)	24.0 (± 4.6)

[Items 165–167 appear only on the elementary version of the survey.]

Family Domain

The next set of questions asks about your family. When answering these questions, please think about the people you consider to be your family—parents, stepparents, grandparents, aunts, uncles, etc.

168. My parents ask if I've gotten my homework done. [†]	Local (n = 1,032)	State (n = 2,410)
a. NO!	7.1% (± 1.9%)	8.3% (± 1.4%)
b. no	16.4 (± 2.0)	16.7 (± 1.2)
c. yes	41.1 (± 2.8)	42.2 (± 1.7)
d. YES!	35.5 (± 3.3)	32.8 (± 2.3)
169. Would your parents know if you did not come home on time? [†]	Local (n = 1,015)	State (n = 2,371)
a. NO!	5.4% (± 1.6%)	6.0% (± 1.1%)
b. no	17.6 (± 1.8)	17.9 (± 1.6)
c. yes	47.4 (± 3.2)	46.4 (± 2.0)
d. YES!	29.6 (± 2.7)	29.7 (± 1.6)
170. When I am not at home, one of my parents knows where I am and who I am with. [†]	Local (n = 1,024)	State (n = 2,401)
a. NO!	3.4% (± 1.3%)	4.3% (± 0.9%)
b. no	13.0 (± 2.6)	13.1 (± 1.7)
c. yes	54.7 (± 3.7)	51.8 (± 2.6)
d. YES!	28.9 (± 2.8)	30.9 (± 1.8)

	Local	State
171. The rules in my family are clear. [†]	(n = 1,020)	(n = 2,395)
a. NO!	4.1% (± 1.3%)	4.1% (± 0.9%)
b. no	11.7 (± 2.5)	11.8 (± 1.4)
c. yes	49.9 (± 2.3)	48.8 (± 2.0)
d. YES!	34.3 (± 3.7)	35.3 (± 2.3)
172. My family has clear rules about alcohol and drug use. [†]	Local (n = 1,022)	State (n = 2,393)
a. NO!	5.0% (± 2.0%)	5.2% (± 1.2%)
b. no	18.4 (± 2.7)	16.1 (± 1.8)
c. yes	39.0 (± 3.9)	39.9 (± 2.2)
d. YES!	37.6 (± 4.5)	38.8 (± 2.3)
173. If you drank some beer, wine, or liquor (for example, vodka, whiskey, or gin) without your parent's permission, would you be caught by them? [†]	Local (n = 1,013)	State (n = 2,362)
a. NO!	13.3% (± 1.6%)	14.1% (± 1.8%)
b. no	50.4 (± 1.5)	48.9 (± 2.5)
c. yes	22.2 (± 2.1)	21.9 (± 1.7)
d. YES!	14.0 (± 2.0)	15.0 (± 1.7)
174. If you carried a handgun without your parent's permission, would you be caught by them? [†]	Local (n = 1,010)	State (n = 2,355)
a. NO!	7.7% (± 1.8%)	8.1% (± 1.7%)
b. no	21.0 (± 2.4)	22.3 (± 1.8)
c. yes	31.4 (± 3.4)	30.2 (± 2.1)
d. YES!	39.9 (± 4.0)	39.4 (± 2.1)
175. If you skipped school, would you be caught by your parents? [†]	Local (n = 1,013)	State (n = 2,363)
a. NO!	6.2% (± 1.6%)	8.5% (± 1.8%)
b. no	20.0 (± 1.9)	22.1 (± 2.0)
c. yes	38.7 (± 2.3)	35.8 (± 2.4)
d. YES!	35.0 (± 2.0)	33.7 (± 2.1)
176. If I had a personal problem, I could ask my mom or dad for help. [†]	Local (n = 1,024)	State (n = 2,402)
a. NO!	7.3% (± 2.0%)	7.2% (± 1.0%)
b. no	15.1 (± 1.7)	16.6 (± 1.6)
c. yes	44.0 (± 3.8)	43.7 (± 2.1)
d. YES!	33.6 (± 3.8)	32.5 (± 2.5)
177. My parents give me lots of chances to do fun things with them. [†]	Local (n = 1,018)	State (n = 2,389)
a. NO!	7.9% (± 1.7%)	9.0% (± 1.4%)
b. no	23.9 (± 2.8)	26.3 (± 1.9)
c. yes	45.9 (± 2.9)	43.8 (± 2.6)
d. YES!	22.4 (± 3.3)	20.9 (± 2.2)

178.	My parents ask me what I think before most family decisions affecting me are made. [†]	Local (n = 1,013)	State (n = 2,385)
	a. NO!	10.9% (± 2.1%)	12.2% (± 1.5%)
	b. no	23.4 (± 2.0)	26.5 (± 2.2)
	c. yes	45.2 (± 2.8)	41.6 (± 2.2)
	d. YES!	20.5 (± 2.0)	19.7 (± 1.4)
179.	My parents notice when I am doing a good job and let me know about it. [†]	Local (n = 1,016)	State (n = 2,381)
	a. Never or almost never	9.7% (± 1.2%)	11.5% (± 1.5%)
	b. Sometimes	29.3 (± 2.2)	31.5 (± 1.7)
	c. Often	36.6 (± 2.8)	33.9 (± 1.7)
	d. All the time	24.4 (± 3.5)	23.1 (± 1.8)
180.	How often do your parents tell you they're proud of you for something you've done? [†]	Local (n = 1,018)	State (n = 2,384)
	a. Never or almost never	13.6% (± 2.7%)	12.9% (± 1.6%)
	b. Sometimes	27.7 (± 3.2)	30.4 (± 2.2)
	c. Often	34.5 (± 3.1)	33.8 (± 2.1)
	d. All the time	24.3 (± 4.1)	23.0 (± 1.9)
181.	Do you enjoy spending time with your mom ^C /mother ^A ? [†]	Local (n = 1,014)	State (n = 2,376)
	a. NO!	8.1% (± 1.4%)	6.9% (± 0.8%)
	b. no	11.5 (± 2.0)	13.4 (± 1.6)
	c. yes	45.9 (± 2.6)	46.8 (± 1.6)
	d. YES!	34.5 (± 2.8)	32.8 (± 2.1)
182.	Do you enjoy spending time with your dad ^C /father ^A ? [†]	Local (n = 1,005)	State (n = 2,356)
	a. NO!	11.7% (± 2.2%)	11.4% (± 1.5%)
	b. no	14.1 (± 3.4)	14.5 (± 1.8)
	c. yes	43.1 (± 3.1)	44.4 (± 2.1)
	d. YES!	31.0 (± 1.9)	29.7 (± 1.7)
183.	How wrong do your parents feel it would be for <u>you</u> to drink beer, wine, or hard liquor (for example: vodka, whiskey, or gin) regularly (at least once or twice a month)?	Local (n = 1,549)	State (n = 3,090)
	a. Very wrong	63.3% (± 3.3%)	60.5% (± 2.2%)
	b. Wrong	22.7 (± 2.1)	23.2 (± 1.4)
	c. A little bit wrong	11.2 (± 2.5)	11.8 (± 1.2)
	d. Not wrong at all	2.9 (± 0.7)	4.5 (± 0.8)
184.	How wrong do your parents feel it would be for <u>you</u> to smoke cigarettes?	Local (n = 1,548)	State (n = 3,097)
	a. Very wrong	77.4% (± 2.8%)	72.5% (± 3.1%)
	b. Wrong	15.1 (± 1.9)	16.2 (± 1.5)
	c. A little bit wrong	4.3 (± 1.2)	6.4 (± 1.2)
	d. Not wrong at all	3.2 (± 0.8)	4.9 (± 1.0)

185.	How wrong do your parents feel it would be for <u>you</u> to smoke marijuana?	Local (n = 1,547)	State (n = 3,091)
a.	Very wrong	70.5% (± 4.3%)	69.8% (± 2.6%)
b.	Wrong	17.8 (± 3.1)	16.4 (± 1.6)
c.	A little bit wrong	7.0 (± 1.8)	8.2 (± 1.2)
d.	Not wrong at all	4.7 (± 1.4)	5.6 (± 1.0)

School Domain

186.	Putting them all together, what were your grades like last year?	Local (n = 3,067)	State (n = 6,057)
a.	Mostly As	37.2% (± 4.0%)	35.1% (± 2.9%)
b.	Mostly Bs	36.2 (± 2.3)	35.3 (± 1.4)
c.	Mostly Cs	19.9 (± 2.7)	22.4 (± 1.9)
d.	Mostly Ds	4.4 (± 0.9)	4.7 (± 0.9)
e.	Mostly Fs	2.3 (± 0.6)	2.5 (± 0.6)

187.	Are your school grades better than the grades of most students in your class?	Local (n = 1,524)	State (n = 3,046)
a.	NO!	8.4% (± 1.9%)	7.8% (± 1.0%)
b.	no	34.0 (± 2.7)	35.4 (± 1.7)
c.	yes	42.4 (± 2.8)	43.1 (± 1.9)
d.	YES!	15.2 (± 1.9)	13.7 (± 1.2)

188.	How often do you feel the schoolwork you are assigned is meaningful and important?	Local (n = 1,516)	State (n = 3,040)
a.	Almost always	11.9% (± 2.2%)	12.4% (± 1.6%)
b.	Often	26.3 (± 2.9)	26.0 (± 1.2)
c.	Sometimes	36.5 (± 3.2)	36.6 (± 1.3)
d.	Seldom	18.6 (± 1.7)	18.2 (± 1.6)
e.	Never	6.7 (± 1.1)	6.9 (± 0.9)

189.	How interesting are most of your courses to you?	Local (n = 1,542)	State (n = 3,092)
a.	Very interesting and stimulating	11.8% (± 2.3%)	10.1% (± 1.5%)
b.	Quite interesting	34.0 (± 1.9)	31.0 (± 1.6)
c.	Fairly interesting	34.4 (± 2.6)	36.4 (± 1.5)
d.	Slightly dull	12.7 (± 1.2)	15.8 (± 1.2)
e.	Very dull	7.1 (± 1.0)	6.8 (± 1.0)

190.	How important do you think the things you are learning in school are going to be for you later in life?	Local (n = 1,543)	State (n = 3,090)
a.	Very important	18.4% (± 3.1%)	19.8% (± 1.9%)
b.	Quite important	27.5 (± 2.1)	26.2 (± 1.5)
c.	Fairly important	31.6 (± 2.7)	32.2 (± 1.6)
d.	Slightly important	18.0 (± 2.2)	17.4 (± 1.5)
e.	Not at all important	4.5 (± 0.9)	4.4 (± 0.6)

Think back over the past year in school. How often did you:

	Local	State
191. Enjoy being in school?	(n = 3,086)	(n = 6,093)
a. Never	6.7% (± 1.3%)	7.9% (± 1.2%)
b. Seldom	17.0 (± 1.7)	16.6 (± 1.4)
c. Sometimes	35.6 (± 1.6)	33.8 (± 1.4)
d. Often	29.0 (± 2.1)	28.6 (± 1.3)
e. Almost always	11.6 (± 1.6)	13.1 (± 1.5)
192. Hate being in school?	Local (n = 1,547)	State (n = 3,091)
a. Never	7.9% (± 1.0%)	7.8% (± 1.1%)
b. Seldom	30.3 (± 2.6)	28.0 (± 1.8)
c. Sometimes	37.8 (± 1.9)	37.9 (± 1.3)
d. Often	17.4 (± 1.4)	18.8 (± 1.4)
e. Almost always	6.7 (± 1.4)	7.5 (± 1.0)
193. Try to do your best work in school?	Local (n = 1,545)	State (n = 3,085)
a. Never	2.2% (± 0.6%)	1.8% (± 0.5%)
b. Seldom	7.8 (± 1.3)	7.2 (± 0.9)
c. Sometimes	18.5 (± 2.3)	19.3 (± 1.6)
d. Often	35.2 (± 2.4)	35.0 (± 2.0)
e. Almost always	36.4 (± 1.9)	36.8 (± 2.1)
194. During the LAST 4 WEEKS, how many whole days of school have you missed because you skipped or "cut"?	Local (n = 1,540)	State (n = 3,086)
a. None	76.6% (± 3.4%)	72.7% (± 2.9%)
b. 1	10.7 (± 1.7)	11.1 (± 0.9)
c. 2	4.9 (± 1.1)	5.3 (± 0.6)
d. 3	3.2 (± 0.9)	4.1 (± 1.0)
e. 4–5	2.7 (± 1.1)	3.6 (± 0.9)
f. 6–10	1.0 (± 0.7)	1.7 (± 0.6)
g. 11 or more	0.9 (± 0.6)	1.6 (± 0.6)
195. In my school, students have lots of chances to help decide things like class activities and rules.	Local (n = 1,540)	State (n = 3,076)
a. NO!	19.7% (± 4.4%)	17.4% (± 2.6%)
b. no	34.6 (± 2.7)	35.6 (± 2.5)
c. yes	38.1 (± 4.4)	38.6 (± 2.9)
d. YES!	7.7 (± 1.8)	8.4 (± 1.7)
196. There are lots of chances for students in my school to talk with a teacher one-on-one.	Local (n = 1,535)	State (n = 3,070)
a. NO!	4.4% (± 1.7%)	4.8% (± 1.1%)
b. no	14.2 (± 2.2)	14.1 (± 1.5)
c. yes	56.2 (± 2.7)	56.1 (± 1.9)
d. YES!	25.3 (± 3.9)	25.0 (± 2.9)

197. Teachers ask me to work on special classroom projects.	Local (n = 1,532)	State (n = 3,060)
a. NO!	17.5% (± 2.2%)	15.9% (± 1.5%)
b. no	50.9 (± 2.8)	49.5 (± 2.3)
c. yes	26.4 (± 2.6)	28.8 (± 2.1)
d. YES!	5.2 (± 1.0)	5.8 (± 1.0)
198. There are lots of chances for students in my school to get involved in sports, clubs, and other school activities outside of class.	Local (n = 1,540)	State (n = 3,074)
a. NO!	2.6% (± 1.5%)	3.3% (± 1.1%)
b. no	5.1 (± 1.7)	6.3 (± 1.8)
c. yes	36.0 (± 4.0)	38.1 (± 2.3)
d. YES!	56.3 (± 5.7)	52.4 (± 3.8)
199. I have lots of chances to be part of class discussions or activities.	Local (n = 1,536)	State (n = 3,075)
a. NO!	2.7% (± 1.0%)	3.0% (± 0.8%)
b. no	9.0 (± 2.2)	9.7 (± 1.4)
c. yes	56.5 (± 3.0)	56.5 (± 2.1)
d. YES!	31.8 (± 4.7)	30.8 (± 2.9)
200. My teacher(s) notices when I am doing a good job and lets me know about it.	Local (n = 1,543)	State (n = 3,078)
a. NO!	8.0% (± 1.7%)	8.5% (± 1.5%)
b. no	29.9 (± 2.1)	28.0 (± 2.2)
c. yes	51.5 (± 2.5)	50.5 (± 2.0)
d. YES!	10.6 (± 2.3)	13.0 (± 1.8)
201. The school lets my parents know when I have done something well.	Local (n = 1,539)	State (n = 3,072)
a. NO!	31.6% (± 3.4%)	30.0% (± 2.4%)
b. no	48.5 (± 2.3)	48.0 (± 2.3)
c. yes	16.6 (± 2.7)	17.3 (± 2.0)
d. YES!	3.3 (± 0.9)	4.8 (± 1.0)
202. I feel safe at my school.	Local (n = 3,101)	State (n = 6,157)
a. NO! ^{A,C} / Definitely NOT true ^B	4.2% (± 0.8%)	4.4% (± 0.7%)
b. no ^{A,C} / Mostly not true ^B	6.7 (± 1.9)	7.5 (± 1.0)
c. yes ^{A,C} / Mostly true ^B	50.0 (± 3.9)	51.6 (± 2.0)
d. YES! ^{A,C} / Definitely true ^B	39.1 (± 5.6)	36.6 (± 2.9)
203. My teachers praise me when I work hard in school.	Local (n = 1,539)	State (n = 3,071)
a. NO!	12.8% (± 2.1%)	14.1% (± 1.7%)
b. no	40.6 (± 2.6)	41.5 (± 1.8)
c. yes	40.0 (± 3.2)	37.5 (± 1.8)
d. YES!	6.7 (± 1.4)	7.0 (± 1.3)

Peer and Individual Domain***How much do you think people risk harming themselves if they:***

	Local (n = 1,538)	State (n = 3,073)
204. Smoke one or more packs of cigarettes per day?		
a. No risk	3.1% (± 1.2%)	2.4% (± 0.7%)
b. Slight risk	3.5 (± 1.1)	4.1 (± 1.0)
c. Moderate risk	12.2 (± 2.0)	15.1 (± 1.6)
d. Great risk	79.7 (± 4.0)	76.3 (± 2.5)
e. Not sure	1.6 (± 0.9)	2.2 (± 0.7)

	Local (n = 1,532)	State (n = 3,066)
205. Try marijuana once or twice?		
a. No risk	44.9% (± 3.7%)	42.7% (± 2.3%)
b. Slight risk	26.8 (± 2.6)	26.8 (± 1.8)
c. Moderate risk	13.6 (± 1.7)	14.3 (± 1.3)
d. Great risk	13.1 (± 2.4)	13.9 (± 1.4)
e. Not sure	1.6 (± 1.1)	2.3 (± 0.7)

	Local (n = 1,534)	State (n = 3,066)
206. Smoke marijuana regularly (at least once or twice a week)?		
a. No risk	15.6% (± 2.2%)	17.1% (± 1.8%)
b. Slight risk	19.2 (± 2.2)	17.9 (± 1.5)
c. Moderate risk	24.8 (± 2.5)	24.6 (± 2.1)
d. Great risk	37.9 (± 4.2)	37.4 (± 2.7)
e. Not sure	2.5 (± 1.1)	3.0 (± 0.8)

	Local (n = 1,530)	State (n = 3,061)
207. Take one or two drinks of an alcoholic beverage (wine, beer, a shot, liquor) nearly every day?		
a. No risk	8.1% (± 2.1%)	10.5% (± 1.7%)
b. Slight risk	15.6 (± 2.0)	19.6 (± 1.2)
c. Moderate risk	31.9 (± 3.3)	29.5 (± 1.9)
d. Great risk	42.4 (± 3.2)	38.1 (± 2.3)
e. Not sure	2.0 (± 1.1)	2.4 (± 0.8)

How old were you the first time you:

	Local (n = 3,082)	State (n = 6,082)
208. Smoked marijuana?		
a. Never have	56.9% (± 2.9%)	54.5% (± 2.3%)
b. 10 or younger	1.6 (± 0.5)	2.2 (± 0.5)
c. 11	1.2 (± 0.5)	1.8 (± 0.5)
d. 12	2.3 (± 0.7)	2.9 (± 0.6)
e. 13	4.4 (± 0.9)	5.1 (± 0.8)
f. 14	6.6 (± 1.0)	7.3 (± 1.0)
g. 15	10.3 (± 0.8)	9.7 (± 0.8)
h. 16	11.1 (± 1.8)	10.2 (± 1.0)
i. 17 or older	5.6 (± 1.2)	6.2 (± 0.7)

[Item 209 appears only on the elementary version of the survey.]

	Local (n = 1,520)		State (n = 3,005)	
210. Smoked a cigarette, even just a puff?	66.6%	(± 3.8%)	59.7%	(± 3.4%)
a. Never have	3.8	(± 1.1)	6.3	(± 1.4)
b. 10 or younger	2.1	(± 0.8)	2.6	(± 0.6)
c. 11	2.8	(± 0.9)	3.2	(± 0.7)
d. 12	3.7	(± 0.9)	4.3	(± 0.7)
e. 13	3.6	(± 0.9)	4.7	(± 0.8)
f. 14	6.5	(± 1.4)	6.2	(± 1.0)
g. 15	6.3	(± 1.5)	7.0	(± 1.0)
h. 16	4.7	(± 0.4)	6.0	(± 1.0)
i. 17 or older				
211. Had more than a sip or two of beer, wine, or hard liquor (for example, vodka, whiskey, or gin)?	Local (n = 3,078)		State (n = 6,074)	
a. Never have	32.7%	(± 2.4%)	29.4%	(± 1.9%)
b. 10 or younger	8.1	(± 1.2)	9.2	(± 1.0)
c. 11	2.4	(± 0.7)	3.2	(± 0.7)
d. 12	4.5	(± 0.8)	4.9	(± 0.6)
e. 13	7.2	(± 1.5)	7.9	(± 0.8)
f. 14	10.3	(± 1.5)	10.9	(± 0.8)
g. 15	13.0	(± 1.5)	13.7	(± 0.8)
h. 16	13.1	(± 1.3)	13.3	(± 0.8)
i. 17 or older	8.7	(± 1.1)	7.4	(± 0.7)

[Item 212 appears only on the elementary version of the survey.]

	Local (n = 1,512)		State (n = 2,995)	
213. Began drinking alcoholic beverages regularly, that is, at least once or twice a month?	67.1%	(± 4.2%)	62.9%	(± 2.4%)
a. Never have	1.1	(± 0.5)	1.1	(± 0.3)
b. 10 or younger	1.0	(± 0.4)	0.8	(± 0.3)
c. 11	1.1	(± 0.5)	1.0	(± 0.3)
d. 12	1.3	(± 0.7)	2.0	(± 0.8)
e. 13	2.8	(± 1.4)	3.0	(± 0.7)
f. 14	4.4	(± 1.2)	7.2	(± 1.0)
g. 15	12.0	(± 2.7)	11.8	(± 1.4)
h. 16	9.3	(± 1.8)	10.2	(± 1.3)
i. 17 or older				

How old were you when you first:

	Local (n = 1,517)		State (n = 2,986)	
214. Got suspended from school?	78.1%	(± 3.4%)	73.4%	(± 3.0%)
a. Never have	5.9	(± 1.5)	6.1	(± 1.2)
b. 10 or younger	1.5	(± 0.6)	2.2	(± 0.6)
c. 11	2.2	(± 0.9)	2.9	(± 0.6)
d. 12	4.0	(± 1.2)	5.0	(± 0.9)
e. 13	3.4	(± 1.1)	4.1	(± 0.7)
f. 14	2.4	(± 0.8)	3.2	(± 0.7)
g. 15	1.9	(± 0.7)	2.1	(± 0.5)
h. 16	0.7	(± 0.3)	1.1	(± 0.3)
i. 17 or older				

	Local (n = 1,517)		State (n = 2,987)	
215. Got arrested?	89.5%	(± 1.9%)	87.8%	(± 2.0%)
a. Never have	0.9	(± 0.4)	1.4	(± 0.5)
b. 10 or younger	0.4	(± 0.3)	0.7	(± 0.3)
c. 11	1.0	(± 0.3)	0.7	(± 0.3)
d. 12	1.1	(± 0.7)	1.4	(± 0.5)
e. 13	0.9	(± 0.4)	1.3	(± 0.5)
f. 14	1.9	(± 0.6)	2.3	(± 0.6)
g. 15	2.3	(± 0.8)	2.4	(± 0.6)
h. 16	2.0	(± 0.4)	2.0	(± 0.4)
i. 17 or older				

	Local (n = 1,513)		State (n = 2,974)	
216. Carried a handgun?	90.2%	(± 2.4%)	88.4%	(± 1.6%)
a. Never have	2.3	(± 0.8)	2.7	(± 0.7)
b. 10 or younger	1.1	(± 0.6)	1.1	(± 0.4)
c. 11	0.6	(± 0.4)	0.9	(± 0.4)
d. 12	0.9	(± 0.4)	0.9	(± 0.3)
e. 13	1.3	(± 0.5)	1.6	(± 0.4)
f. 14	1.3	(± 0.6)	1.5	(± 0.4)
g. 15	1.3	(± 0.5)	1.9	(± 0.5)
h. 16	0.9	(± 0.6)	1.0	(± 0.4)
i. 17 or older				

	Local (n = 1,507)		State (n = 2,966)	
217. Attacked someone with the idea of seriously hurting them?	84.6%	(± 2.6%)	84.0%	(± 1.9%)
a. Never have	3.8	(± 1.0)	3.4	(± 0.7)
b. 10 or younger	0.9	(± 0.4)	0.9	(± 0.3)
c. 11	1.5	(± 0.9)	2.0	(± 0.5)
d. 12	1.8	(± 0.8)	2.4	(± 0.5)
e. 13	1.8	(± 0.6)	1.9	(± 0.5)
f. 14	2.7	(± 0.9)	2.6	(± 0.7)
g. 15	1.7	(± 0.7)	1.8	(± 0.4)
h. 16	1.3	(± 0.6)	1.1	(± 0.4)
i. 17 or older				

How wrong do YOU think it is for someone your age to:

	Local (n = 1,492)		State (n = 2,932)	
218. Drink beer, wine, or hard liquor (for example, vodka, whiskey, or gin) regularly?	34.5%	(± 3.4%)	32.7%	(± 1.9%)
a. Very wrong	25.1	(± 2.0)	25.0	(± 1.6)
b. Wrong	27.4	(± 2.2)	28.2	(± 1.4)
c. A little bit wrong	13.1	(± 1.9)	14.1	(± 1.3)
d. Not wrong at all				

	Local (n = 3,005)		State (n = 5,849)	
219. Smoke cigarettes?	48.3%	(± 3.1%)	45.1%	(± 2.1%)
a. Very wrong	26.4	(± 1.7)	24.9	(± 1.2)
b. Wrong	14.4	(± 1.2)	16.0	(± 1.1)
c. A little bit wrong	10.9	(± 1.9)	14.0	(± 1.7)
d. Not wrong at all				

	Local	State
220. Smoke marijuana?	(n = 1,491)	(n = 2,928)
a. Very wrong	37.6% (± 3.6%)	38.4% (± 2.0%)
b. Wrong	19.9 (± 2.1)	21.2 (± 1.3)
c. A little bit wrong	20.8 (± 1.7)	20.0 (± 1.2)
d. Not wrong at all	21.7 (± 3.1)	20.5 (± 2.0)
221. Use LSD, cocaine, amphetamines, or another illegal drug?	Local (n = 1,493)	State (n = 2,925)
a. Very wrong	78.5% (± 2.1%)	78.1% (± 1.6%)
b. Wrong	13.6 (± 1.2)	12.7 (± 1.1)
c. A little bit wrong	5.4 (± 1.5)	6.0 (± 0.9)
d. Not wrong at all	2.6 (± 0.7)	3.2 (± 0.6)
222. Take a handgun to school?	Local (n = 1,503)	State (n = 2,961)
a. Very wrong	85.1% (± 2.6%)	85.8% (± 1.8%)
b. Wrong	10.8 (± 1.6)	10.4 (± 1.3)
c. A little bit wrong	2.4 (± 0.8)	2.2 (± 0.6)
d. Not wrong at all	1.7 (± 0.6)	1.6 (± 0.5)
223. Steal anything worth more than \$5?	Local (n = 1,504)	State (n = 2,959)
a. Very wrong	48.1% (± 2.5%)	51.8% (± 2.2%)
b. Wrong	35.6 (± 2.6)	33.6 (± 1.5)
c. A little bit wrong	12.5 (± 1.2)	11.7 (± 1.3)
d. Not wrong at all	3.8 (± 1.0)	2.9 (± 0.8)
224. Pick a fight with someone?	Local (n = 1,498)	State (n = 2,952)
a. Very wrong	36.4% (± 3.5%)	34.6% (± 2.2%)
b. Wrong	37.3 (± 3.4)	38.3 (± 2.0)
c. A little bit wrong	21.0 (± 2.4)	21.6 (± 1.7)
d. Not wrong at all	5.3 (± 1.4)	5.6 (± 0.8)
225. Attack someone with the idea of seriously hurting them?	Local (n = 1,503)	State (n = 2,952)
a. Very wrong	65.2% (± 3.9%)	64.2% (± 2.7%)
b. Wrong	24.9 (± 3.1)	25.2 (± 2.0)
c. A little bit wrong	6.7 (± 1.1)	7.5 (± 1.0)
d. Not wrong at all	3.3 (± 1.0)	3.1 (± 0.6)
226. Stay away from school all day when their parents think they are at school?	Local (n = 1,496)	State (n = 2,948)
a. Very wrong	32.9% (± 2.6%)	33.1% (± 2.5%)
b. Wrong	38.2 (± 1.9)	37.6 (± 1.9)
c. A little bit wrong	23.1 (± 1.9)	23.5 (± 2.2)
d. Not wrong at all	5.9 (± 1.5)	5.8 (± 1.0)

227. What are the chances you would be seen as cool if you began drinking alcoholic beverages regularly, that is, at least once or twice a month?		
	Local (n = 1,524)	State (n = 3,048)
a. No or very little chance	29.9% (± 4.1%)	32.6% (± 2.4%)
b. Little chance	23.8 (± 2.0)	23.5 (± 1.9)
c. Some chance	21.7 (± 2.9)	21.3 (± 1.7)
d. Pretty good chance	17.3 (± 3.1)	16.1 (± 1.9)
e. Very good chance	7.4 (± 1.4)	6.5 (± 0.9)

Think of your four best friends (the friends you feel closest to). In the past year (12 months), how many of your best friends have . . .

228. Smoked cigarettes?		
	Local (n = 1,480)	State (n = 2,877)
a. None	58.5% (± 4.8%)	52.5% (± 3.7%)
b. 1	18.3 (± 2.1)	19.4 (± 1.6)
c. 2	9.5 (± 1.8)	10.9 (± 1.1)
d. 3	6.0 (± 1.4)	7.0 (± 1.1)
e. 4	7.8 (± 1.8)	10.2 (± 1.8)

229. Tried beer, wine, or hard liquor (for example, vodka, whiskey, or gin) when their parents didn't know about it?		
	Local (n = 1,479)	State (n = 2,872)
a. None	31.1% (± 2.7%)	28.6% (± 1.8%)
b. 1	15.8 (± 1.6)	15.7 (± 1.1)
c. 2	13.9 (± 1.5)	14.2 (± 1.3)
d. 3	11.5 (± 1.6)	13.0 (± 1.3)
e. 4	27.7 (± 4.1)	28.6 (± 2.1)

230. Used marijuana?		
	Local (n = 1,476)	State (n = 2,864)
a. None	41.3% (± 3.9%)	40.1% (± 2.6%)
b. 1	15.8 (± 1.3)	17.0 (± 1.4)
c. 2	13.1 (± 1.4)	13.6 (± 1.1)
d. 3	9.5 (± 2.1)	10.9 (± 1.3)
e. 4	20.3 (± 2.6)	18.5 (± 1.7)

231. Used LSD, cocaine, amphetamines, or other illegal drugs?		
	Local (n = 1,472)	State (n = 2,865)
a. None	82.4% (± 3.1%)	81.1% (± 2.2%)
b. 1	8.6 (± 1.8)	9.7 (± 1.3)
c. 2	4.5 (± 1.5)	4.5 (± 0.8)
d. 3	1.7 (± 0.7)	1.9 (± 0.6)
e. 4	2.9 (± 1.0)	2.8 (± 0.7)

232. Been suspended from school?		
	Local (n = 1,529)	State (n = 3,041)
a. None of my friends	76.7% (± 4.2%)	77.3% (± 2.5%)
b. 1 of my friends	13.0 (± 2.4)	13.6 (± 1.4)
c. 2 of my friends	6.0 (± 1.6)	5.1 (± 1.1)
d. 3 of my friends	1.6 (± 0.6)	1.7 (± 0.5)
e. 4 of my friends	2.8 (± 1.0)	2.3 (± 0.5)

233. Carried a handgun?		Local	State
		(n = 1,529)	(n = 3,044)
	a. None of my friends	91.6% (± 2.3%)	91.4% (± 1.4%)
	b. 1 of my friends	5.5 (± 1.8)	4.9 (± 1.0)
	c. 2 of my friends	1.2 (± 0.5)	1.6 (± 0.5)
	d. 3 of my friends	0.5 (± 0.4)	0.8 (± 0.4)
e. 4 of my friends	1.2 (± 0.6)	1.3 (± 0.4)	
234. Sold illegal drugs?		Local	State
		(n = 1,529)	(n = 3,043)
	a. None of my friends	68.6% (± 2.7%)	68.5% (± 1.9%)
	b. 1 of my friends	15.1 (± 1.7)	15.5 (± 1.1)
	c. 2 of my friends	8.5 (± 1.2)	8.2 (± 1.0)
	d. 3 of my friends	3.1 (± 0.7)	3.3 (± 0.6)
e. 4 of my friends	4.6 (± 1.4)	4.6 (± 0.8)	
235. Stolen or tried to steal a motor vehicle such as a car or motorcycle?		Local	State
		(n = 1,530)	(n = 3,040)
	a. None of my friends	92.8% (± 2.4%)	92.5% (± 1.5%)
	b. 1 of my friends	4.3 (± 1.2)	4.3 (± 0.9)
	c. 2 of my friends	1.0 (± 0.7)	1.2 (± 0.5)
	d. 3 of my friends	1.0 (± 0.6)	1.1 (± 0.4)
e. 4 of my friends	1.0 (± 0.6)	0.9 (± 0.3)	
236. Been arrested?		Local	State
		(n = 1,528)	(n = 3,040)
	a. None of my friends	80.0% (± 2.9%)	78.4% (± 1.9%)
	b. 1 of my friends	12.9 (± 2.2)	13.4 (± 1.5)
	c. 2 of my friends	3.7 (± 0.6)	4.0 (± 0.7)
	d. 3 of my friends	1.4 (± 0.5)	2.0 (± 0.5)
e. 4 of my friends	2.0 (± 1.0)	2.3 (± 0.6)	
237. Dropped out of school?		Local	State
		(n = 1,530)	(n = 3,042)
	a. None of my friends	85.8% (± 2.5%)	82.6% (± 2.1%)
	b. 1 of my friends	8.6 (± 1.8)	11.2 (± 1.4)
	c. 2 of my friends	2.8 (± 0.5)	3.2 (± 0.7)
	d. 3 of my friends	1.4 (± 0.6)	1.6 (± 0.5)
e. 4 of my friends	1.3 (± 0.6)	1.3 (± 0.4)	
238. When I am an adult I will smoke cigarettes.		Local	State
		(n = 1,474)	(n = 2,869)
	a. NO!	72.5% (± 4.3%)	69.3% (± 2.9%)
	b. no	19.1 (± 3.0)	19.9 (± 2.0)
	c. yes	6.0 (± 1.7)	8.2 (± 1.5)
d. YES!	2.3 (± 1.0)	2.6 (± 0.9)	
239. When I am an adult I will drink beer, wine, or liquor.		Local	State
		(n = 1,474)	(n = 2,869)
	a. NO!	17.7% (± 3.3%)	19.0% (± 1.7%)
	b. no	15.2 (± 2.5)	15.4 (± 1.5)
	c. yes	48.0 (± 3.3)	46.7 (± 2.2)
d. YES!	19.1 (± 3.6)	18.9 (± 1.6)	

	Local (n = 1,474)		State (n = 2,872)	
240. When I am an adult I will smoke marijuana.				
a. NO!	53.4%	(± 3.6%)	54.8%	(± 2.4%)
b. no	24.5	(± 2.5)	24.2	(± 1.7)
c. yes	14.0	(± 2.2)	13.7	(± 1.4)
d. YES!	8.1	(± 1.7)	7.3	(± 1.1)

Think about your four best friends (the friends you feel closest to). In the past year (12 months), how many of your best friends have...

	Local (n = 1,483)		State (n = 2,895)	
241. Participated in clubs, organizations or activities at school?				
a. None of my friends	13.4%	(± 3.2%)	14.3%	(± 2.4%)
b. 1 of my friends	11.6	(± 2.0)	12.0	(± 1.6)
c. 2 of my friends	13.5	(± 1.3)	14.6	(± 1.2)
d. 3 of my friends	14.2	(± 1.4)	13.8	(± 1.2)
e. 4 of my friends	47.3	(± 4.6)	45.3	(± 3.0)

	Local (n = 1,478)		State (n = 2,881)	
242. Made a commitment to stay drug-free?				
a. None of my friends	34.4%	(± 3.8%)	33.1%	(± 2.1%)
b. 1 of my friends	17.7	(± 1.6)	17.0	(± 1.5)
c. 2 of my friends	12.7	(± 1.4)	12.3	(± 1.1)
d. 3 of my friends	8.5	(± 1.4)	9.9	(± 1.2)
e. 4 of my friends	26.7	(± 3.2)	27.7	(± 2.2)

	Local (n = 1,474)		State (n = 2,882)	
243. Liked school?				
a. None of my friends	22.9%	(± 2.7%)	24.3%	(± 1.7%)
b. 1 of my friends	14.0	(± 2.2)	13.7	(± 1.5)
c. 2 of my friends	19.1	(± 2.4)	19.3	(± 1.5)
d. 3 of my friends	16.7	(± 2.0)	17.3	(± 1.4)
e. 4 of my friends	27.3	(± 2.4)	25.4	(± 1.7)

	Local (n = 1,477)		State (n = 2,873)	
244. Regularly attended religious services?				
a. None of my friends	33.0%	(± 4.1%)	34.1%	(± 2.9%)
b. 1 of my friends	27.5	(± 1.6)	26.7	(± 1.4)
c. 2 of my friends	19.4	(± 2.3)	17.9	(± 1.7)
d. 3 of my friends	8.8	(± 1.7)	8.7	(± 1.2)
e. 4 of my friends	11.2	(± 2.0)	12.7	(± 2.1)

	Local (n = 1,479)		State (n = 2,881)	
245. Tried to do well in school?				
a. None of my friends	5.8%	(± 1.7%)	5.7%	(± 1.1%)
b. 1 of my friends	5.5	(± 1.1)	6.0	(± 0.8)
c. 2 of my friends	11.0	(± 2.1)	13.0	(± 1.6)
d. 3 of my friends	19.1	(± 1.7)	19.1	(± 1.5)
e. 4 of my friends	58.6	(± 4.0)	56.2	(± 2.5)

	Local (n = 1,534)		State (n = 3,058)	
246. I think it is okay to take something without asking as long as you get away with it.				
a. NO!	49.5%	(± 1.7%)	50.4%	(± 1.6%)
b. no	40.0	(± 1.7)	39.6	(± 1.7)
c. yes	7.7	(± 1.0)	7.3	(± 0.8)
d. YES!	2.9	(± 0.8)	2.7	(± 0.6)

247.	I think sometimes it's okay to cheat at school.	Local (n = 1,530)	State (n = 3,050)
a.	NO!	25.0% (± 2.1%)	24.7% (± 1.7%)
b.	no	35.8 (± 2.3)	37.8 (± 1.5)
c.	yes	34.2 (± 2.7)	32.5 (± 1.9)
d.	YES!	5.0 (± 1.1)	5.0 (± 1.0)
248.	It is all right to beat up people if they start the fight.	Local (n = 1,535)	State (n = 3,054)
a.	NO!	28.1% (± 3.3%)	26.3% (± 2.0%)
b.	no	24.2 (± 2.3)	23.3 (± 1.9)
c.	yes	29.7 (± 2.5)	31.9 (± 1.6)
d.	YES!	17.9 (± 3.5)	18.5 (± 2.6)
249.	It is important to be honest with your parents, even if they become upset or you get punished.	Local (n = 1,526)	State (n = 3,047)
a.	NO!	6.6% (± 1.4%)	5.7% (± 1.0%)
b.	no	17.6 (± 2.6)	15.4 (± 1.6)
c.	yes	50.8 (± 2.7)	48.6 (± 2.0)
d.	YES!	25.0 (± 1.9)	30.4 (± 2.2)
[Items 250–252 appear only on the elementary version of the survey.]			
253.	You're looking at CDs in a music store with a friend. You look up and see her slip a CD under her coat. She smiles and says, "Which one do you want? Go ahead, take it while nobody's around." There is nobody in sight, no employees, and no other customers. What would you do now?	Local (n = 1,467)	State (n = 2,843)
a.	Ignore her	32.2% (± 2.4%)	31.5% (± 1.9%)
b.	Grab a CD and leave the store	10.0 (± 1.3)	9.0 (± 1.2)
c.	Tell her to put the CD back	31.9 (± 2.6)	31.2 (± 1.9)
d.	Act like it's a joke and ask her to put the CD back	25.8 (± 2.4)	28.3 (± 2.1)
254.	You are visiting another part of town and you don't know any of the people your age there. You are walking down the street and some teenager you don't know is walking toward you. He is about your size. As he is about to pass you, he deliberately bumps into you and you almost lose your balance. What would you say or do?	Local (n = 1,465)	State (n = 2,823)
a.	Push the person back	10.4% (± 2.5%)	13.4% (± 1.7%)
b.	Say nothing and keep on walking	46.3 (± 3.3)	44.5 (± 2.1)
c.	Say, "Watch where you're going," and keep on walking	29.7 (± 3.0)	29.0 (± 1.8)
d.	Swear at the person and walk away	13.6 (± 1.5)	13.1 (± 1.2)
255.	You are at a party at someone's house and one of your friends offers you a drink containing alcohol. What would you say or do?	Local (n = 1,462)	State (n = 2,816)
a.	Drink it	41.2% (± 3.5%)	43.4% (± 2.1%)
b.	Tell your friend, "No thanks. I don't drink," and suggest that you and your friend go and do something else	27.3 (± 3.2)	25.1 (± 2.0)
c.	Just say, "No, thanks," and walk away	25.7 (± 1.5)	25.2 (± 1.4)
d.	Make up a good excuse, tell your friend you had something else to do, and leave	5.8 (± 1.6)	6.3 (± 1.0)

256. During the past 12 months, how many days did you miss some school because of a toothache (do not include toothache due to braces or an injury)? (For the elementary version of this question, please see Item 85.)

- a. None
- b. 1–4 days
- c. 5 days or more
- d. Not sure

	Local (<i>n</i> = 1,550)		State (<i>n</i> = 3,043)	
	94.7%	(± 1.3%)	92.3%	(± 1.3%)
	2.9	(± 0.9)	4.7	(± 0.9)
	1.0	(± 0.5)	1.4	(± 0.4)
	1.4	(± 0.6)	1.6	(± 0.6)

List of Core Items

The core items that appeared on both Forms A and B (the secondary versions of the survey) are listed below. All other items appeared on either Form A or Form B, but not both. Core items may or may not have appeared on Form C (the elementary version).

<i>Item</i>	<i>Description</i>	<i>Item</i>	<i>Description</i>
1	Age	58	Drinking categories variable
3	Gender	59	Drunk or high at school (past 12 months)
4	Race/Ethnicity	78	Participation in after school activities
5	Language spoken at home	97	30-day ridden in car with drinking driver
7	Mother's education	99	30-day driven a car while drinking
8	Father's education	102	Weapon carrying on school property (past 30 days)
14	Honesty in completing survey	103	Physical fighting (past 12 months)
16	Lifetime alcohol use	105	Gang membership
17	Lifetime marijuana use	110	Depression (past 12 months)
24	30-day use of cigarettes	111	Seriously consider attempting suicide
25	30-day use of chewing tobacco	122	Been bullied (past 30 days)
28	30-day use of alcohol	131	School provides counselor to discuss ATOD
29	30-day use of marijuana or hashish	186	Grades in school (past 12 months)
30/31	30-day use of illegal drugs	191	Enjoyed being in school (past 12 months)
32	30-day use of painkillers	202	Feel safe at school
34	Would smoke if offered cigarette by a friend	208	Age when first smoked marijuana
35	Intent to smoke within the next year	211	Age when first drank alcohol
55	Binge drinking	219	Perceived wrongness of smoking

Item Index

Age at first use 208, 210, 211, 213	Family 143–145, 168–185	School (<i>continued</i>)
Alcohol	Fighting 103–104, 217, 224–225, 248, 254	Climate 195–201, 203
Age at first use 211, 213	Fitness	Enjoyment 191–192
Attitudes 56–57, 156, 158, 218, 227, 239, 255	Body weight 63–64	Fighting at 104
Driving 97, 99	Exercise 71–73	Safety 202
Prevention 50–52	Physical Education 76–77	Schoolwork 188–190, 197
Quitting 62	Friends 228–237, 241–245	Substance use at 40, 59
Source 60, 150	Gambling 120–121	Suspension 214, 232
Use 28, 55, 58–59, 229	Gangs 105	Weapons at 102, 222
Arrest 215, 236	Guns (<i>see</i> Weapons)	Sexual Behavior 89–92
Asthma 79–84	HIV/AIDS Education 133–135	Sleep 12–13
Bullying 122–130	Honesty 14, 246–247, 249	Suicide 111–113, 117–119
Clubs 162–164	Marijuana (<i>see</i> Drugs)	Teams (<i>see</i> Clubs)
Cocaine (<i>see</i> Drugs)	Medical care 87–88	Theft 223, 235, 253
Demographics 1, 3–5, 7–8	Methamphetamines (<i>see</i> Drugs)	Tobacco
Dental Health 88, 256	Neighborhood 147–149, 161	Advertising 42
Depression 110, 116	Nutrition 65–70	Age at first use 210
Diabetes 86	Pregnancy prevention 134–135	Chewing 25
Drugs	Quality of life 136–142	Cigarettes 15, 24, 34–37, 40, 157, 210, 219, 228, 238
Age at first use 208	Risk of harm 37, 54, 204–207	Prevention 38–39, 48
Cocaine 21, 153, 221, 231	Rules enforcement 53, 132, 168–175	Quitting 62
Marijuana 17, 29, 54, 152, 155, 160, 208, 220, 230, 240	Safety 93, 95–96	Secondhand smoke 41, 43–45, 47
Methamphetamines 20, 153, 221, 231	School	Source 49, 151
Other drugs 18–19, 22, 30–33, 221, 231	Absence 194, 226	Other tobacco use 26–27
Quitting 62	Achievement 186–187, 193	TV/Video Games 74–75
Selling 234	After school activities 78	Weapons 100, 102, 154, 159, 216, 233
Source 61, 153	ATOD Intervention 131	Violence 106–109
		Work 9–11