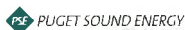


PSE Facilities Eastside Rail Corridor

Jennifer Altschuler
Supervisor Real Estate, Central Region

6-5-13



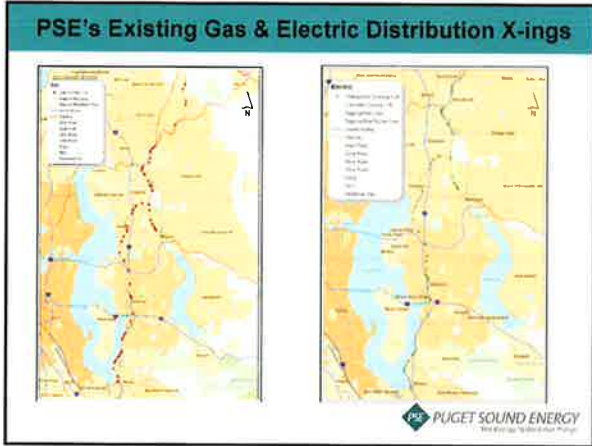
PSE Goals within the Eastside Rail Corridor

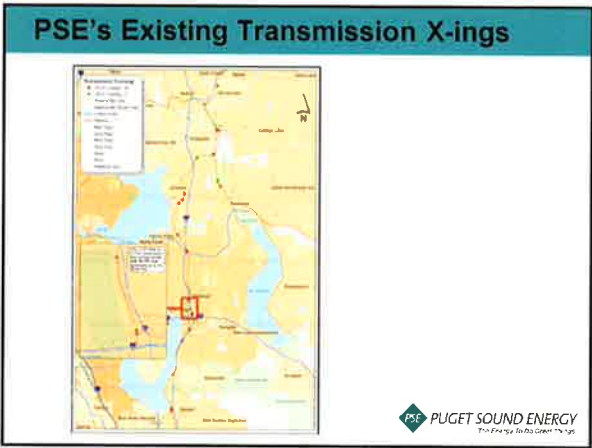
- Safe, reliable, and efficient electric and natural gas infrastructure for King County residents
- Continued operation and maintenance of existing overhead and underground crossings
- Possible future uses of the corridor:
 - Additional crossings
 - New facilities along the corridor
 - Either overhead transmission or
 - Underground electric or gas distribution
- Co-exist with other uses in the corridor

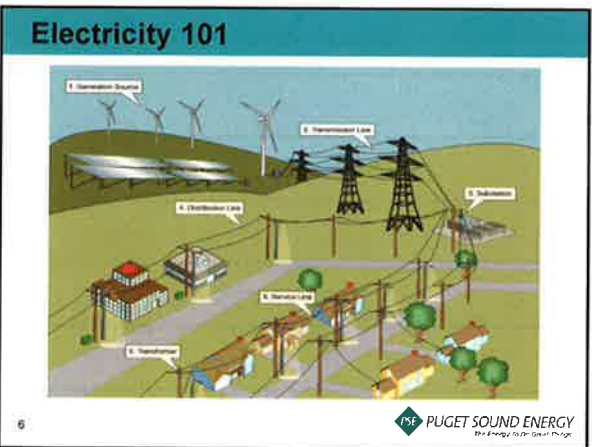


PSE's Easements on the ERC







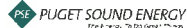


Natural Gas 101

From the wellhead, natural gas can be moved thousands of miles through large-diameter transmission pipelines. Once a supplier's gas reaches our system, it passes through a variety of different components and infrastructure, including city gate stations where a strong odorant is added (for safety reasons) to give the gas its familiar rotten-egg smell. City gate stations also reduce the pressure of gas as it leaves the larger transmission pipeline and enters smaller utility-owned gas mains.

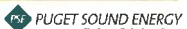


Deep underground deposits of natural gas (1) are brought to the surface by wellhead pumps (2). After the gas is processed and purified, it travels along interstate pipelines (3). Compressor stations (4) are located every 50 to 60 miles to maintain gas pressure. Natural gas often is stored in large underground reservoirs (5) to help meet spikes in demand. Gas eventually reaches a city gate station (6), where it is metered and delivered to customers through a distribution network (7) of local gas mains, small-diameter service lines and, ultimately, customer meters.



PSE's Regulatory World

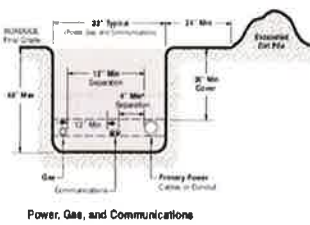
Transmission Wood Pole Const



Double Circuit Steel Pole



Joint Utility Use of Underground Trench



- Gas, electric and communications facilities can be co-located in joint trench
- Additional depth is required for crossings beneath rail (minimum 10' depth)

Power, Gas, and Communications



PSE Interurban RW