

Renton-Eastside Rail Corridor



Presentation to the
Eastside Rail Corridor
Regional Advisory Committee
June 5, 2013
Doug Jacobson
Deputy Public Works Administrator



Renton – Eastside Rail Corridor

- Opportunity to connect with several regional trails
 - Lake to Sound
 - Cedar River
- Opportunity to connect with several local trails
 - May Creek
 - Highlands to Landing



Renton-Eastside Rail Corridor

- M.P. 5.0 to M.P. 6.9.
- Adjacent land uses are residential.
- North end of corridor is adjacent to I-405.
- Narrow band of residential property between the corridor and Lake Washington.
- South end is constrained by Gene Coulon Park and active BNSF tracks.
- Corridor is parallel in close proximity to bike lanes on Lake Washington Blvd.
- Sound Transit planning envisions Bus Rapid Transit in I-405 corridor.



Active Rail Corridor south of M.P. 5.0



Renton Corridor



M.P. 5.0



Eastside Rail Corridor Renton Segment - Near Term

- Corridor maintenance including vegetation control maintenance of drainage facilities.
- Minimize corridor encroachments.
- Maintain public recreation/water access and amenities and maintenance access to Kenndale Beach.

Vegetation Management



Drainage

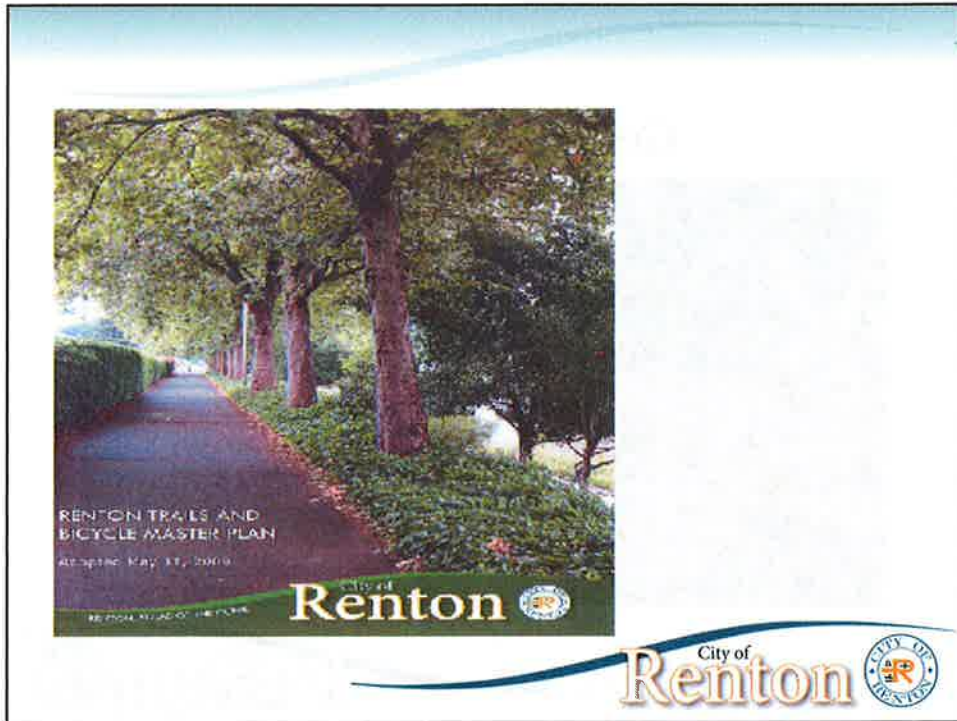


Encroachments



Kennydale Park





Gene Coulon Park



View Corridors Opportunities

- Gene Coulon Park
- Kenndale Beach Park
- Barbee Mill residential development
- Proposed Quendall Terminal Mixed Use Development



Renton - Eastside Rail Corridor

- Provide trailhead access locations including parking and where feasible restroom facilities – paying particular attention to regional connections.
- Provide rest stops along the corridor
- Minimize impact to Kenneydale Beach Park
- Minimize impact to Gene Coulon Park
- Compliment pedestrian and bicycle facilities that exist or will be constructed along Lake Washington Blvd.



Renton – Eastside Rail Corridor

- Do not assume any usage of corridor south of MP 5 that would impact use of spur track to serve Boeing operations
- Accommodate corridor crossings necessary to serve sole access to residential properties along Lake Washington
- Not delay implementation of Bus Rapid Transit along the I-405 corridor



Thank You
Questions and Discussion

